



Reliability Driven™

Service Bulletin No. 3087

<small>MODEL</small>	D / J4500 Series	<small>TYPE</small>	Service Information	<small>SECTION/GROUP</small>	8-Engine	<small>DATE</small>	Nov. 2, 2015
<small>SUBJECT</small>	CUMMINS ISX ALTERNATOR BRACKET						
<small>CONDITIONS</small>	Service Information Only.						

Description:

Motor Coach Industries ("MCI") has received field reports of the alternator bracket on 2010 and 2013 Cummins ISX engine exhibiting signs of fatigue and cracking.

MCI is instructing customers operating a D or J4500 series coach equipped with a 2010 or 2013 Cummins ISX engine to perform the visual inspection outlined in this Service Information bulletin.

Service Procedure:



Read this entire procedure before beginning work.
Use Safe Shop Practices At All Times.



To avoid personal injury, never enter or perform work in the engine compartment prior to positioning the ENGINE RUN and ENGINE START switches on the engine compartment remote control box to the OFF position. Allow enough time for components to cool down prior to working in the engine compartment.

1. Turn the main battery disconnect switch to the OFF position.
2. Chock both sides of the tires.
3. Open the engine compartment doors.

4. Locate the Cummins ISX alternator brackets.
5. Perform a visual inspection of the Cummins ISX alternator brackets in the location shown in Figure 1.

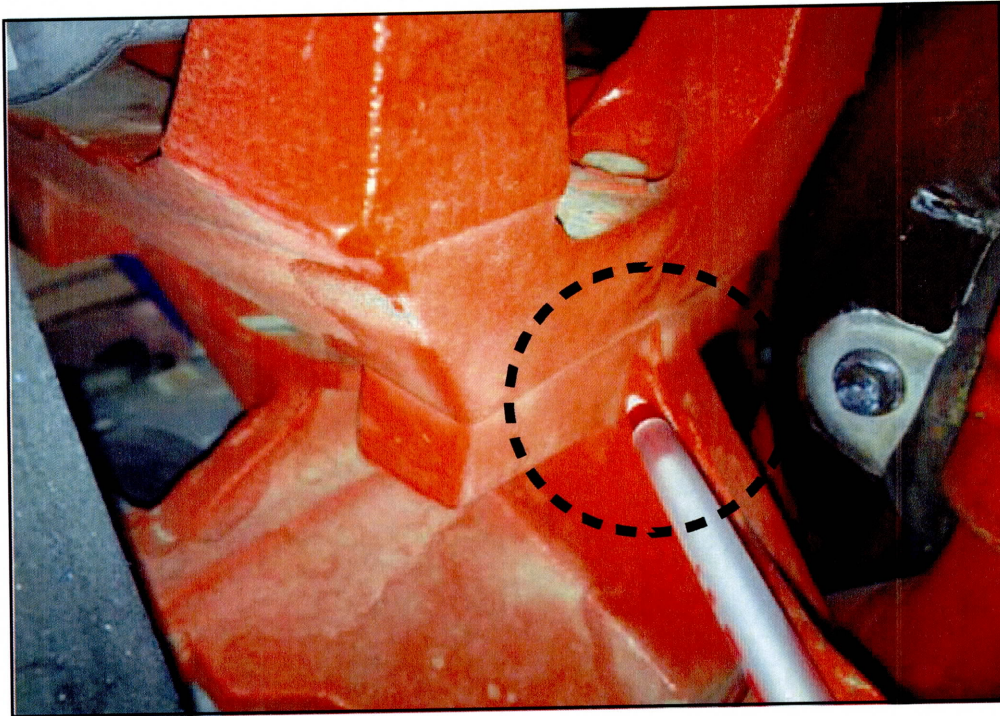


Figure 1. Visual inspection location.

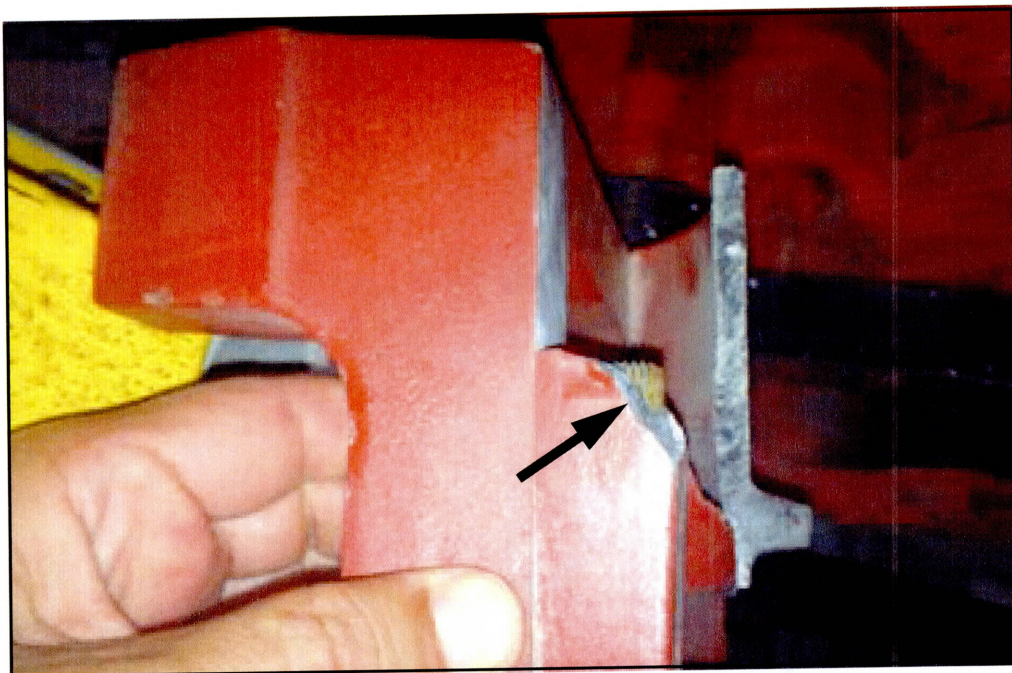


Figure 2. Crack in alternator bracket.



NOTICE

If there is NO sign of damage to the alternator bracket upon visual inspection, close the engine compartment doors. Perform the visual inspection every month. Procedure complete.

If there are visible signs of cracks or damage to the alternator bracket upon visual inspection, MCI customers are instructed to contact the MCI Customer Service Line at 1-800-241-2947 for further information regarding alternator bracket replacement.

Procedure Complete.