



TO: Pierce Dealer Network
 FROM: Pierce Customer Service
 DATE: January 16th, 2015, **Revised March 19, 2015**
 RE: Service Topic 356.1 – LED Headlight Part Numbers and Install Instructions



Recently, LED Headlight upgrades are becoming more common. In light of this, we are releasing this bulletin to address what part numbers are compatible with specific chassis and what the process is for installation. When ordering for a Velocity or Impel, the dealer must ensure they check which option was selected (Rectangular or Round) for that particular apparatus.

***Note: Wiring and programming changes (if equipped with Multiplexing) will be required when installing these lights. Please contact Pierce Customer Service to obtain the correct wiring diagrams and updated programming. Please confirm if the truck is equipped with high beam flash and daytime running lights. The standard \$250 engineering review fee will apply.**

4" x 6" Rectangular LED Headlights:

Product Specifications:

Size:	4" x 6" Rectangle
Input Voltage:	12V DC
Raw Lumens:	1,890
Effective Lumens:	740 (Low Beam) 890 (High Beam)
Current Draw:	2.25 Amps @ 12V DC
Retrofit Info:	1A1 & 2A1 Sealed Beams



These headlights are used on the Saber, Enforcer, Arrow XT, and Dash CF Chassis as well as the Velocity/Impel Chassis optioned with rectangle headlights.

Qty (2) per truck: **2677865** HEADLIGHT,LED,LOW BEAM,12V RECTANGULAR*

Qty (2) per truck: **2677743** HEADLIGHT,LED,HIGH BEAM,12V RECTANGULAR*

***Outboard lights are only low beam and the inboard lights are only high beam.**



Round LED Headlights:

Product Specifications:

Size:	5.75" Round
Input Voltage:	12-24V DC
Raw Lumens:	1,200
Effective Lumens:	600 (Low Beam) 650 (High Beam)
Current Draw:	2.00 Amps @ 12V DC 1.00 Amps @ 24V DC
Retrofit Info:	PAR46 Sealed Beams



These headlights are used on the Quantum Chassis and Velocity/Impel Chassis optioned with round headlights.

Qty (4) per truck: **Per Sales Bulletin PSB0410 Round LED Headlights are not available at this time, Pierce will update when available.** ~~2648287 HEADLIGHT,LED,LH HIGH AND LOW 5.75 ROUND~~

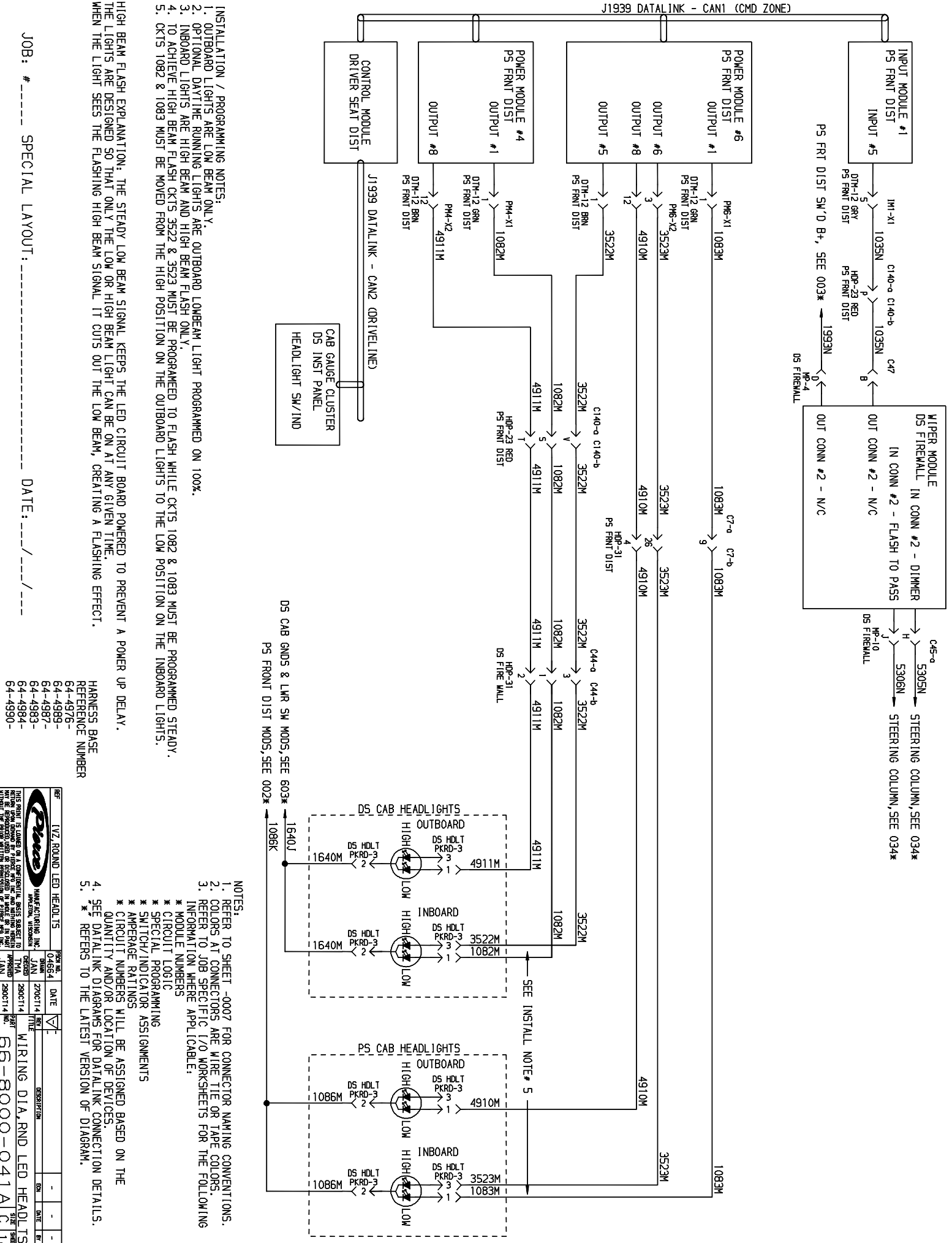
INSTALLATION / PROGRAMMING NOTES:

1. OUTBOARD LIGHTS ARE LOW BEAM ONLY.
2. OPTIONAL DAYTIME RUNNING LIGHTS ARE OUTBOARD LOWBEAM LIGHT PROGRAMMED ON 100%.
3. INBOARD LIGHTS ARE HIGH BEAM AND HIGH BEAM FLASH ONLY.
4. TO ACHIEVE HIGH BEAM FLASH CKTS 3522 & 3523 MUST BE PROGRAMMED TO FLASH WHILE CKTS 1082 & 1083 MUST BE PROGRAMMED STEADY.
5. CKTS 1082 & 1083 MUST BE MOVED FROM THE HIGH POSITION ON THE OUTBOARD LIGHTS TO THE LOW POSITION ON THE INBOARD LIGHTS.

HIGH BEAM FLASH EXPLANATION: THE STEADY LOW BEAM SIGNAL KEEPS THE LED CIRCUIT BOARD POWERED TO PREVENT A POWER UP DELAY. THE LIGHTS ARE DESIGNED SO THAT ONLY THE LOW OR HIGH BEAM LIGHT CAN BE ON AT ANY GIVEN TIME.

WHEN THE LIGHT SEES THE FLASHING HIGH BEAM SIGNAL IT CUTS OUT THE LOW BEAM, CREATING A FLASHING EFFECT.

HARNESSE BASE



- INSTALLATION / PROGRAMMING NOTES:**
1. OUTBOARD LIGHTS ARE LOW BEAM ONLY.
 2. OPTIONAL DAYTIME RUNNING LIGHTS ARE OUTBOARD LOWBEAM LIGHT PROGRAMMED ON 100%.
 3. INBOARD LIGHTS ARE HIGH BEAM AND HIGH BEAM FLASH ONLY.
 4. TO ACHIEVE HIGH BEAM FLASH CKTS 3522 & 3523 MUST BE PROGRAMMED TO FLASH WHILE CKTS 1082 & 1083 MUST BE PROGRAMMED STEADY.
 5. CKTS 1082 & 1083 MUST BE MOVED FROM THE HIGH POSITION ON THE OUTBOARD LIGHTS TO THE LOW POSITION ON THE INBOARD LIGHTS.

HIGH BEAM FLASH EXPLANATION: THE STEADY LOW BEAM SIGNAL KEEPS THE LED CIRCUIT BOARD POWERED TO PREVENT A POWER UP DELAY. WHEN THE LIGHT SEES THE FLASHING HIGH BEAM SIGNAL IT CUTS OUT THE LOW BEAM, CREATING A FLASHING EFFECT.

HARNESS BASE REFERENCE NUMBER
64-4976-
64-4989-
64-4987-
64-4983-
64-4984-
64-4990-

- NOTES:**
1. REFER TO SHEET -0007 FOR CONNECTOR NAMING CONVENTIONS.
 2. COLORS AT CONNECTORS ARE WIRE TIE OR TAPE COLORS.
 3. REFER TO JOB SPECIFIC I/O WORKSHEETS FOR THE FOLLOWING INFORMATION WHERE APPLICABLE:
 - * MODULE NUMBERS
 - * CIRCUIT LOGIC
 - * SPECIAL PROGRAMMING
 - * SWITCH/INDICATOR ASSIGNMENTS
 - * AMPERAGE RATINGS
 4. SEE DATALINK DIAGRAMS FOR DATALINK CONNECTION DETAILS.
 5. * REFERS TO THE LATEST VERSION OF DIAGRAM.

REV	DESCRIPTION	DATE	BY	CHKD
04954	REV	2700CT14		
04954	REV	290CT14		
04954	REV	290CT14		
04954	REV	290CT14		

THIS DRAWING IS UNLESS OTHERWISE SPECIFIED TO BE MADE IN THE UNITED STATES OF AMERICA AND IS THE PROPERTY OF PACCAR INC. ANY REPRODUCTION OR TRANSMISSION OF THIS DRAWING WITHOUT THE WRITTEN PERMISSION OF PACCAR INC. IS PROHIBITED.

WIRING DIA, RND LED HEADLTS
66-8000-041A C 1 of 1