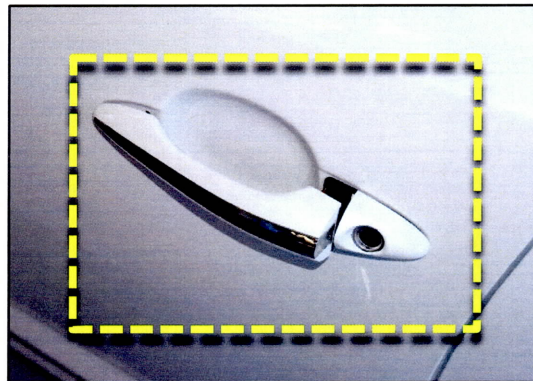
	GROUP BOD	MODEL 2015MY Optima (QF)
	NUMBER 115	DATE September 2015
<b>TECHNICAL SERVICE BULLETIN</b>		
<b>SUBJECT: SERVICE ACTION: EXTERIOR DOOR HANDLE TRIM CAP REPLACEMENT (SA198)</b>		

This bulletin provides the procedure to replace the exterior door handle trim cap of some 2015MY Optima (QF) vehicles, produced from September 2, 2014 through August 24, 2015, which may experience an inoperative driver's side exterior door handle. Kia is requesting the completion of this Service Action on all affected vehicles, including dealer stock, prior to delivery. Before conducting the procedure, verify the vehicle is included in the list of affected VINs.



**★ NOTICE**

**A Service Action is a repair program without customer notification that is performed during the warranty period. Any dealer requesting to perform this repair outside the warranty period will require DPSM approval.**

**Repair status for a VIN is provided on WebDCS (Service> Warranty Coverage> Warranty Coverage Inquiry> Campaign Information). Not completed Recall / Service Action reports are available on WebDCS (Consumer Affairs> Not Completed Recall> Recall VIN> Select Report), which includes a list of affected vehicles.**

**This issue number is SA198.**

File Under: <Body>

- 
- Circulate To:     General Manager     Service Manager     Parts Manager
- Service Advisor(s)     Technician(s)     Body Shop Manager     Fleet Repair

**SUBJECT:** SERVICE ACTION: EXTERIOR DOOR HANDLE TRIM CAP REPLACEMENT (SA198)

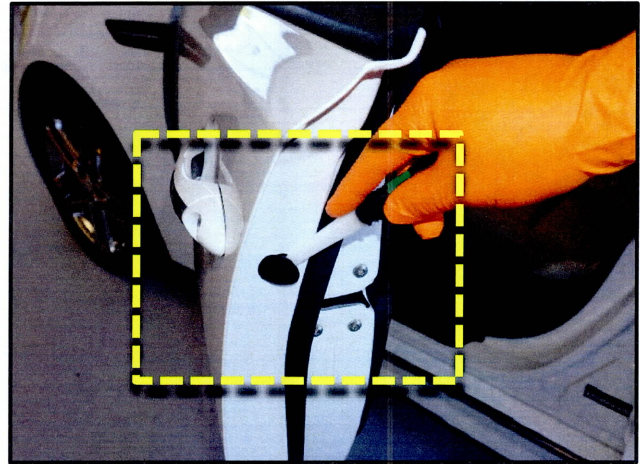
**Service Procedure:**

1. Use a non-marring trim removal tool to remove the rubber trim plug on the side of the door, as shown.

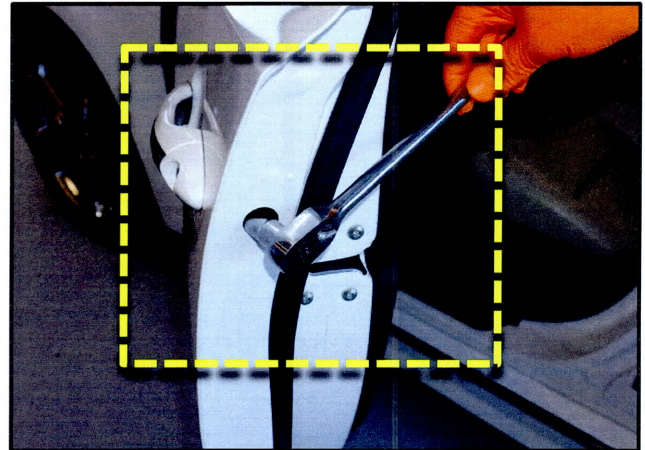


**CAUTION**

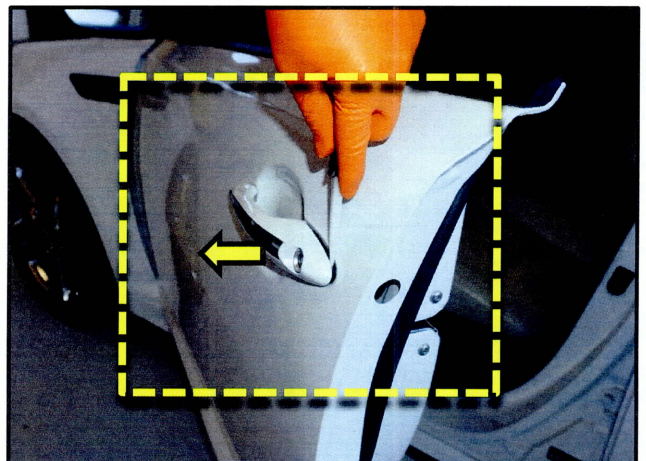
Use a non-marring trim removal tool (such as Snap-on® P/N PBN5 or equivalent) to avoid damaging trim pieces.



2. Loosen the key-hole trim cap retaining bolt using a 10mm socket and wrench.



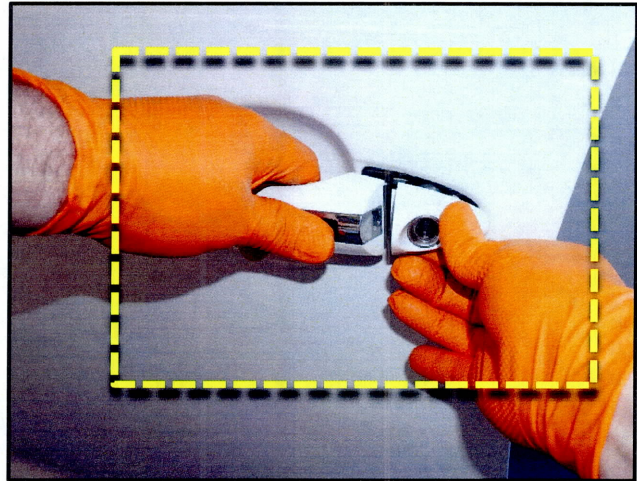
3. Use a non-marring trim removal tool to pry the key-hole trim cap from the door.



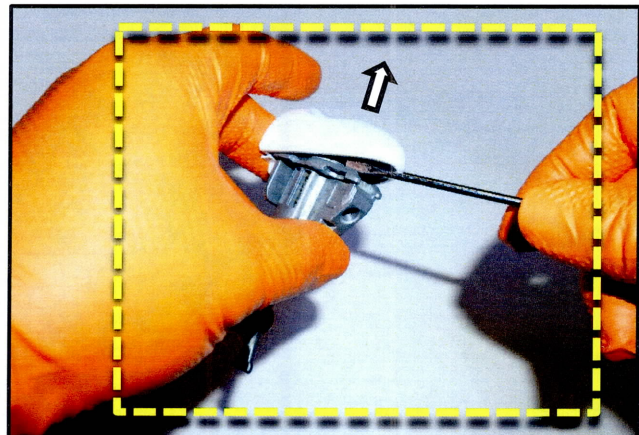
SUBJECT:

SERVICE ACTION: EXTERIOR DOOR HANDLE TRIM CAP  
REPLACEMENT (SA198)

4. Gently pull the door handle out and remove the trim cap and lock cylinder, as shown.



5. Remove the door handle trim cap from the lock cylinder, as shown.



6. Install the new key-hole trim cap on the original door lock cylinder and re-install all components by reversing the order of removal.

**SUBJECT: SERVICE ACTION: EXTERIOR DOOR HANDLE TRIM CAP REPLACEMENT (SA198)**

REQUIRED PARTS:

Part Number	Color	Quantity
82652 2T000ABTQK	Platinum Graphite (ABT)	1
82652 2T000B3UQK	Smokey Blue (B3U)	
82652 2T000D0QQK	Metal Bronze (D0)	
82652 2T000EBQQK	Ebony Black (EB)	
82652 2T000HOQQK	Corsa Blue (HO)	
82652 2T000IMQQK	Titanium Metallic (IM)	
82652 2T000IRQQK	Dark Cherry (IR)	
82652 2T000KCSQK	Sparkling Silver (KCS)	
82652 2T000STMQK	Satin Metal (STM)	
82652 2T000SWPQK	Snow White Pearl (SWP)	
82652 2T000TR3QK	Remington Red (TR3)	
82652 2T0003DQQK	Bright Silver (3D)	

AFFECTED VEHICLE PRODUCTION RANGE:

Model	Production Date Range
Optima (QF)	From September 2, 2014 through August 24, 2015

WARRANTY CLAIM INFORMATION:

Claim Type	Causal P/N	Qty.	N Code	C Code	Repair Description	Labor Op Code	Time	Related Parts	Qty.
V	82652 2T000EB	0	N99	C99	(SA198) Trim Cap Handle Replace	150A23R0	0.2 M/H	82652 2T000ABTQK	1
								82652 2T000B3UQK	
								82652 2T000D0QQK	
								82652 2T000EBQQK	
								82652 2T000HOQQK	
								82652 2T000IMQQK	
								82652 2T000IRQQK	
								82652 2T000KCSQK	
								82652 2T000STMQK	
								82652 2T000SWPQK	
								82652 2T000TR3QK	
								82652 2T0003DQQK	

**\* NOTICE**

VIN inquiry data for this repair is provided for tracking purposes only. Kia retailers should reference SA198 when accessing the WebDCS system.