



# SERVICE BULLETIN

Classification: AT15-016	Reference: NTB15-107	Date: November 30, 2015
-----------------------------	-------------------------	----------------------------

## 2005-2008 PATHFINDER/FRONTIER/XTERRA WITH V6 ENGINE; SERVICE INFORMATION FOR REMANUFACTURED A/T FROM ATC DRIVETRAIN

**APPLIED VEHICLES:** 2005-2008 Pathfinder (R51) with V6 engine only  
 2005-2008 Frontier (D40) with V6 engine only  
 2005-2008 Xterra (N50)

### IF YOU CONFIRM:

A remanufactured automatic transmission supplied by ATC Drivetrain is installed in an **APPLIED VEHICLE**

AND

CONSULT-III plus (C-III plus) is not able to communicate with the TCM through **Diagnosis (One System)**

OR

C-III plus is able to communicate with the TCM, but the TCM part number's (P/N) sixth digit is a "5", "6", or "7" (for example, 31020-7xxxx).

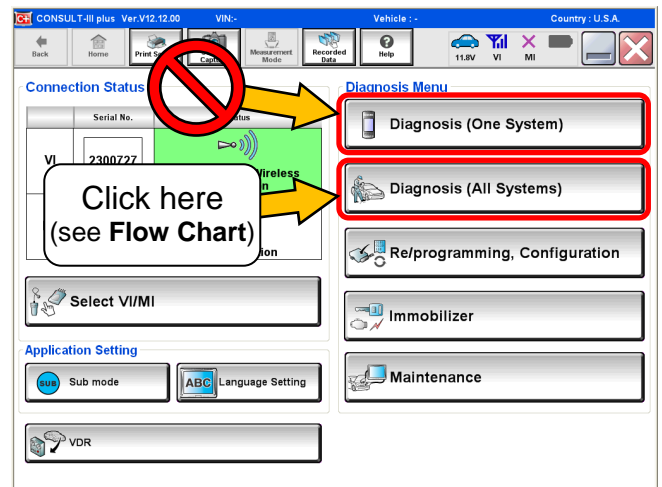


Figure 1

**NOTE:** To determine if an applied vehicle is equipped with an ATC Drivetrain remanufactured A/T, see page 3.

### ACTION:

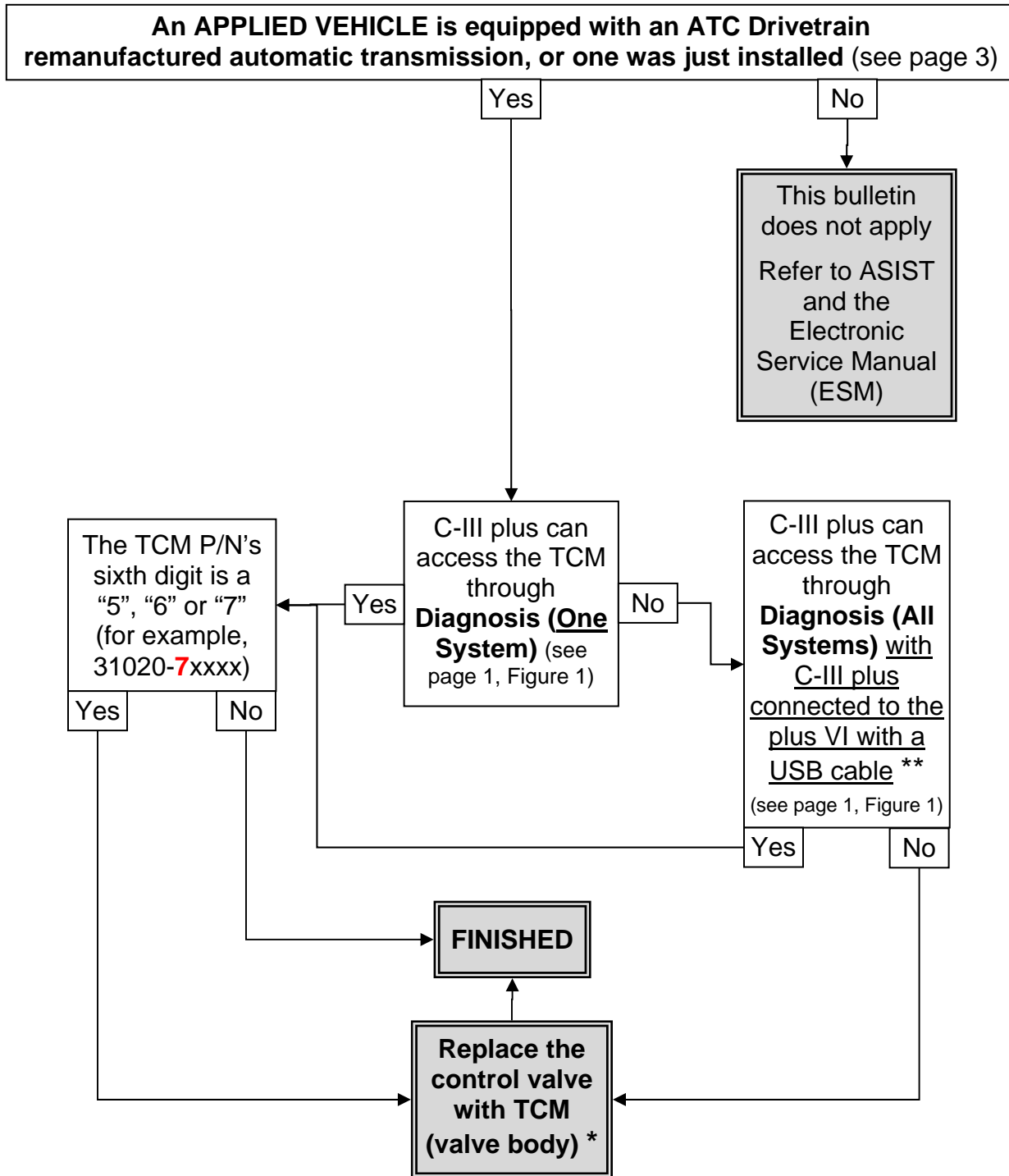
Refer to the **Flow Chart** on page 2.

**IMPORTANT:** The purpose of **ACTION** (above) is to give you a quick idea of the work you will be performing. You **MUST** closely follow the entire **SERVICE PROCEDURE** as it contains information that is essential to successfully completing the repair.

Nissan Bulletins are intended for use by qualified technicians, not 'do-it-yourselfers'. Qualified technicians are properly trained individuals who have the equipment, tools, safety instruction, and know-how to do a job properly and safely. **NOTE:** If you believe that a described condition may apply to a particular vehicle, **DO NOT** assume that it does. See your Nissan dealer to determine if this applies to your vehicle.

# SERVICE PROCEDURE

## Flow Chart



\* Refer to the Electronic Service Manual (ESM), section **AT-Automatic Transmission** or **TM-Transaxle & Transmission** (whichever applies), for valve body replacement.

**NOTE:** The TCM in the replacement valve body is blank and will need to be programmed. Refer to NTB14-033.

\*\* The connection between C-III plus and the plus VI through Bluetooth may not work. **A USB cable must be used.**

To determine if a remanufactured A/T assembly from ATC Drivetrain has been installed in an **APPLIED VEHICLE**, check the unique white label located on the driver side of the remanufactured unit (see Figure 2).

The last two digits of the part number for an ATC Drivetrain remanufactured A/T assembly is “RA”.

If the two digits are “RA”, refer to the **Flow Chart** on page 2.

If the two digits are NOT “RA”, this bulletin does not apply. Refer to ASIST and the Electronic Service Manual (ESM) for further assistance/diagnosis.

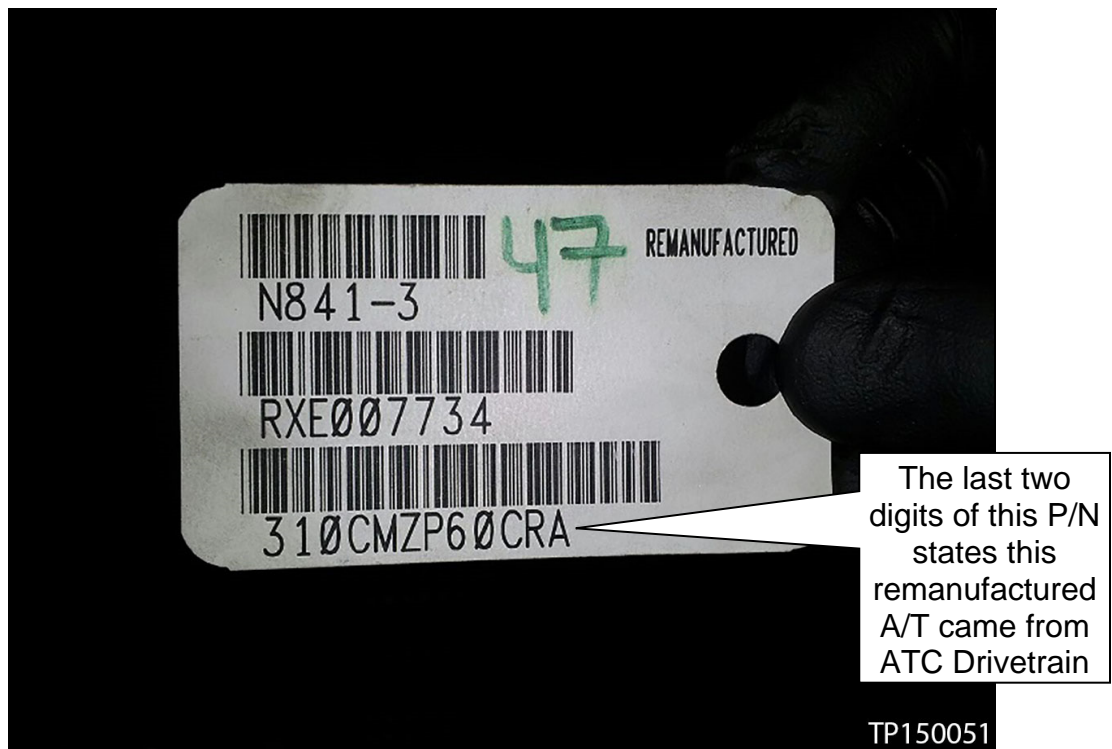


Figure 2: Sample of unique white label

**PARTS INFORMATION**

DESCRIPTION	PART NUMBER	QUANTITY
BLANK VALVE ASSY-CONTROL (valve body with TCM)	(a)	1
GASKET-OIL PAN	(a)	1
WASHER-DRAIN PLUG	(a)	1
BOLT-DRAIN PAN	(a)	22
Automatic Transmission Fluid (c) (d)	- -	(b)

- (a) Refer to FAST or your Electronic Parts Catalog.
- (b) Refer to the ESM for refill quantity.
- (c) Use only Genuine NISSAN Matic J ATF, as applicable, when performing warranty repairs. Genuine NISSAN Matic J ATF (or its equivalent) is recommended, as applicable for all other repairs.
- (d) Nissan Automatic Transmission Fluid can be ordered through the Nissan Maintenance Advantage program: Phone: 877-NIS-NMA1 (877-647-6621) or Website: Order via link on dealer portal [www.NNAnet.com](http://www.NNAnet.com) and click on the "Maintenance Advantage" link.

**CLAIMS INFORMATION**

Submit a PP type line claim using the following claims coding:

DESCRIPTION	PFP	OP CODE	SYM	DIA	FRT
Replace Control Valve and program TCM in ATC Remanufactured A/T	(1)	JX39AA	ZE	32	1.2

- (1) Refer to FAST or your electronic parts catalog and use the part number for the BLANK VALVE ASSY-CONTROL as the Primary Failed Part (PFP).