



Innovation
that excites

NISSAN BULLETIN ECM Reprogram Dealer Service Action

Reference: PC404
Date: October 23, 2015

Attention: Dealer Principal, Sales, Service & Parts Managers

Affected Models/Years:	Affected Population:	Dealer Inventory:	SERVICE COMM Activation date:
MY16 Rogue (T32)	NA	3,195	October 23 rd , 2015

*******Dealer Announcement*******

Nissan is conducting a dealer inventory service action to update Electronic Control Module (ECM) software on **3,195** specific 2016 Rogue vehicles identified in Service Comm. On the affected vehicles, the ECM ROM (Read Only Memory) contains an error that prevents the MIL from illuminating if the tumble control valve position sensor fails. Emissions and vehicle drivability are not affected by this error, but the vehicles are non-compliant with On-Board Diagnostics regulations.

These vehicles are either currently in dealer inventory or assigned and in transit to the dealer.

IMPORTANT: Dealers should not sell or trade any affected 2016 Rogue vehicles in dealer inventory subject to this service action until the ECM software has been updated.

*******What Dealers Should Do*******

PLEASE FOLLOW THE ATTACHED REPAIR INSTRUCTIONS:

1. Verify if vehicles currently in dealer inventory are affected by this inventory inspection using Service Comm **I.D. PC404**.
2. Use the attached procedure to install the updated software.
3. The service department should submit the applicable warranty claim for the action performed so it can be closed on Service Comm and release the vehicle.

******* Dealer Responsibility *******

It is the dealer's responsibility to check Service Comm using the appropriate campaign I.D for the inspection status on each affected vehicle currently in inventory. Nissan requests dealers to perform this repair on vehicles in inventory prior to being retailed to ensure compliance.

NISSAN NORTH AMERICA, INC.
Aftersales DIVISION

Reprogramming Procedure

- **Vehicles Conditioning for ECM Reprogramming**

- Engine coolant temperature: 70 – 100°C (158 – 212°F)
- Battery voltage: More than 12.9V (At idle)
- Transmission: Warmed up

NOTE:

- After reprogramming is complete, you will be required to perform Throttle Valve Closed Position, Idle Air Volume Learn (IAVL), Accelerator Closed Position, and DTC erase.
- The above conditions are required for the IAVL to complete.

1. Connect the plus Vehicle Interface (plus VI) to the vehicle.

- Make sure to use the correct VI for C-III plus (plus VI).

CAUTION: Make sure the plus VI is securely connected. If the plus VI connection is loose during reprogramming, the process will be interrupted and the **ECM may be damaged.**

2. Connect the AC Adapter to the CONSULT PC.

CAUTION: Be sure to connect the AC Adapter. If the CONSULT PC battery voltage drops during reprogramming, the process will be interrupted and the **ECM may be damaged.**

3. Connect a battery charger to the vehicle battery:

For Conventional Vehicles

- Set the battery charger at a low charge rate.

NOTE: The GR-8 (Battery and Electrical Diagnostic Station) set to “Power Supply” mode is recommended.

CAUTION: Be sure the battery charger is connected securely to the battery. Make sure the battery voltage stays between 12.0V and 15.5V during reprogramming. If the battery voltage goes out of this range during reprogramming, the **ECM may be damaged.**

4. Turn off all external Bluetooth® devices (e.g., cell phones, printers, etc.) within range of the CONSULT PC and the VI.

CAUTION: Make sure to turn off all external Bluetooth® devices. If Bluetooth® signal waves are within range of the CONSULT PC and the VI during reprogramming, reprogramming may be interrupted, and the **ECM may be damaged**.

5. Turn the ignition ON with the engine OFF or “not ready”.

- **The engine must not start or run during the reprogramming procedure.**

6. Turn OFF all vehicle electrical loads such as exterior lights, interior lights, HVAC, blower, rear defogger, audio, NAVI, seat heater, steering wheel heater, etc.

IMPORTANT: Make sure to turn OFF all vehicle electrical loads. Make sure the battery voltage stays between 12.0V and 15.5V during reprogramming. If the battery voltage goes out of this range during reprogramming, the **ECM may be damaged**.

7. Turn ON the CONSULT PC.

8. Select CONSULT-III plus (open C-III plus).

9. Wait for the plus VI to be recognized / connected.

- Serial number will display when the plus VI is recognized / connected.

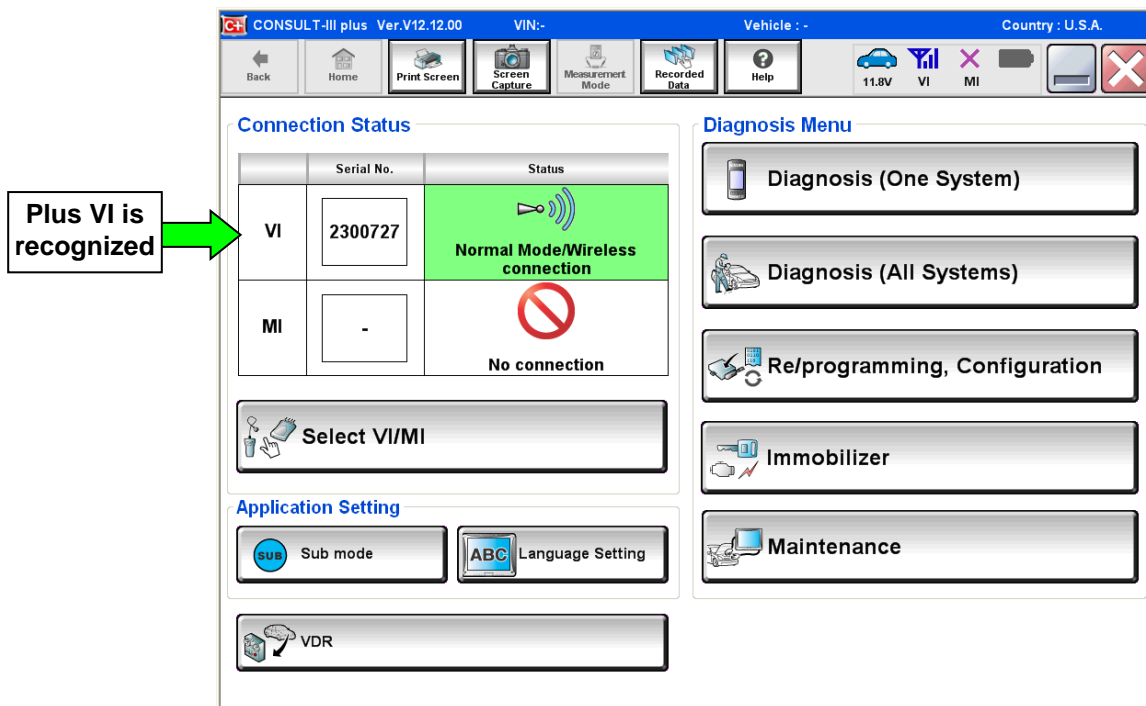


Figure 1

10. Select **Re/programming, Configuration**.

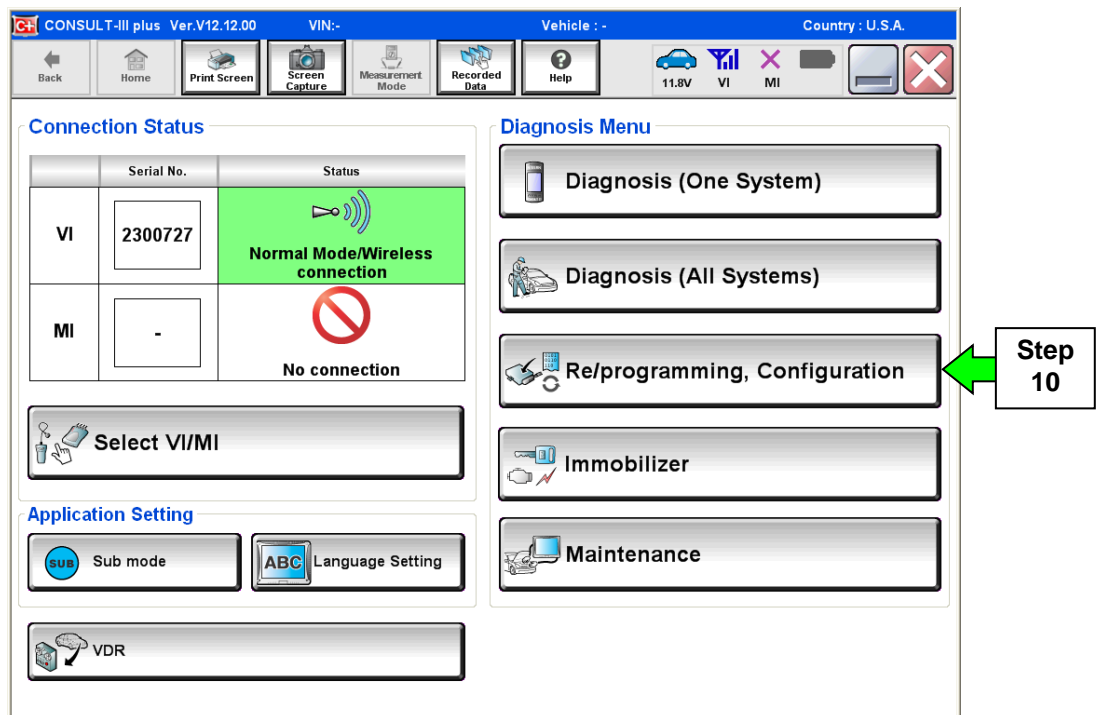


Figure 2

11. Use arrows (if needed) to view and read all precautions.
12. Check the box confirming the precautions have been read.
13. Select **Next**.

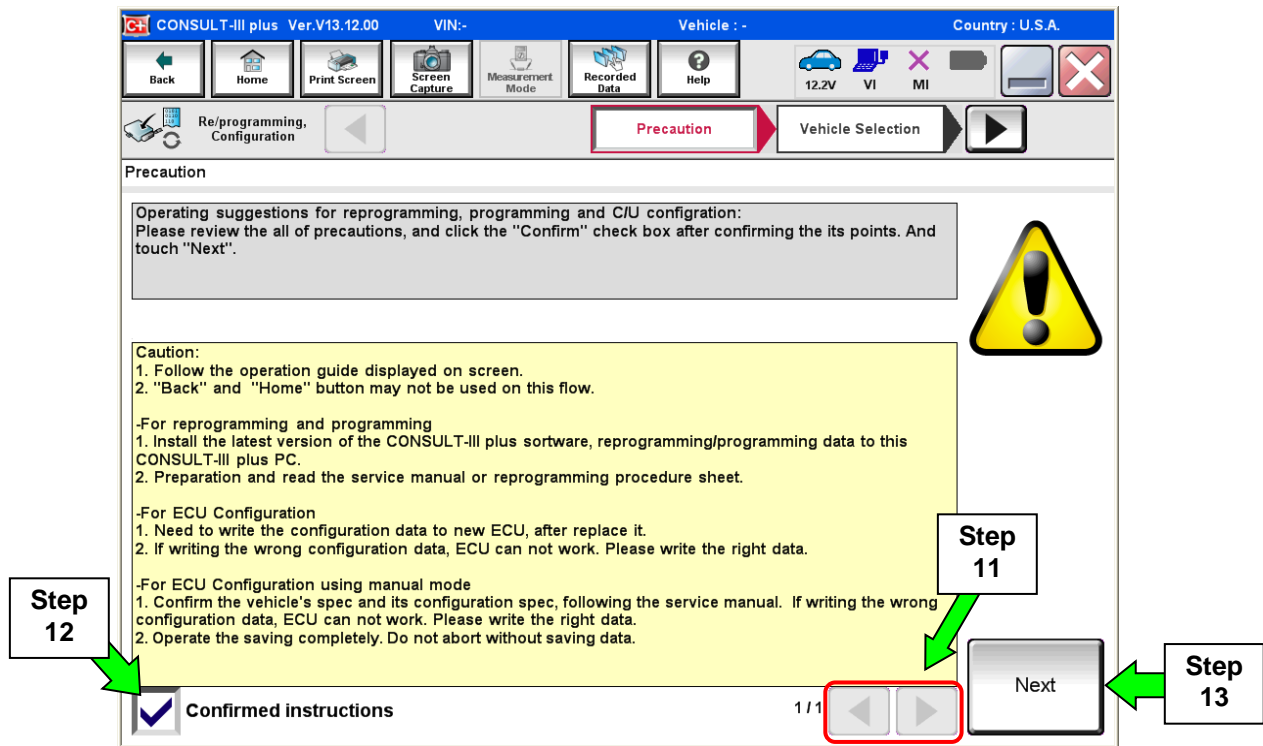


Figure 3

14. Select **Nissan**, **Vehicle Name**, and then the correct **Model Year**.

- If the screen in Figure 4 does not display, skip to step 15.

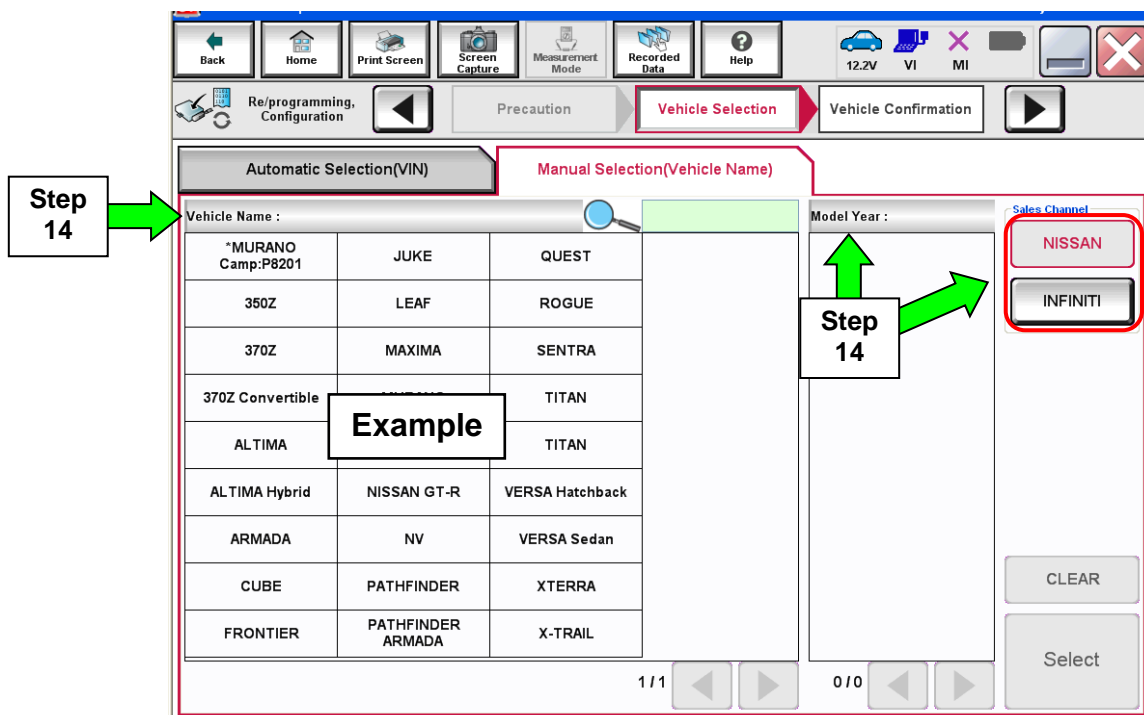


Figure 4

15. Make sure **VIN or Chassis #** matches the vehicle's VIN.

16. If the correct VIN is displayed, select **Confirm**.

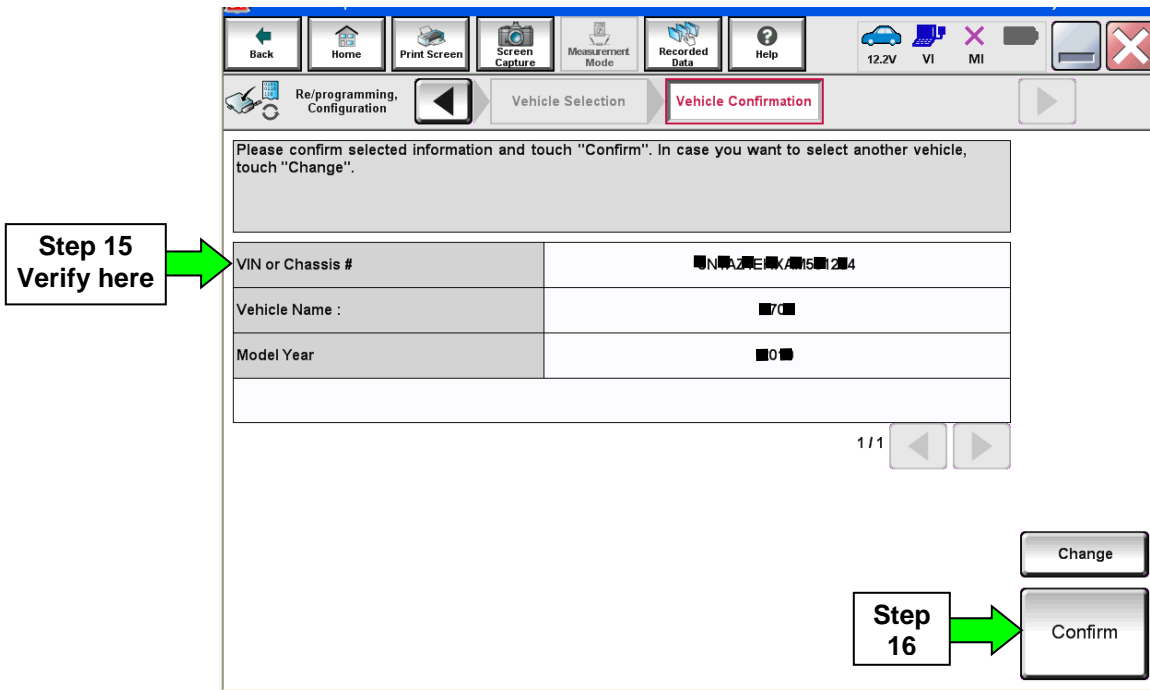


Figure 5

17. Select **Confirm**.

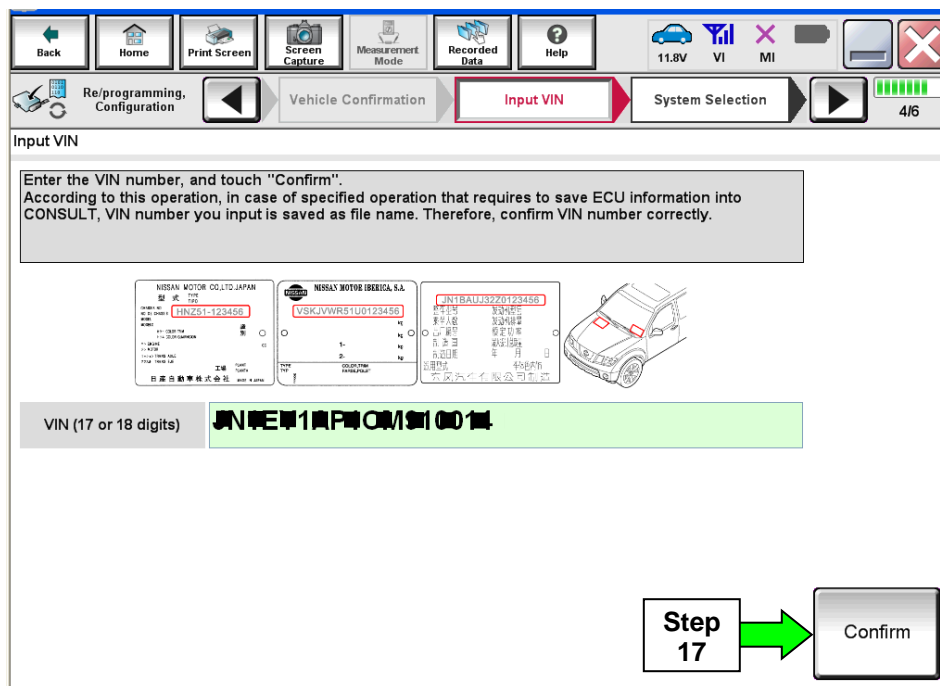


Figure 6

18. Select ENGINE.

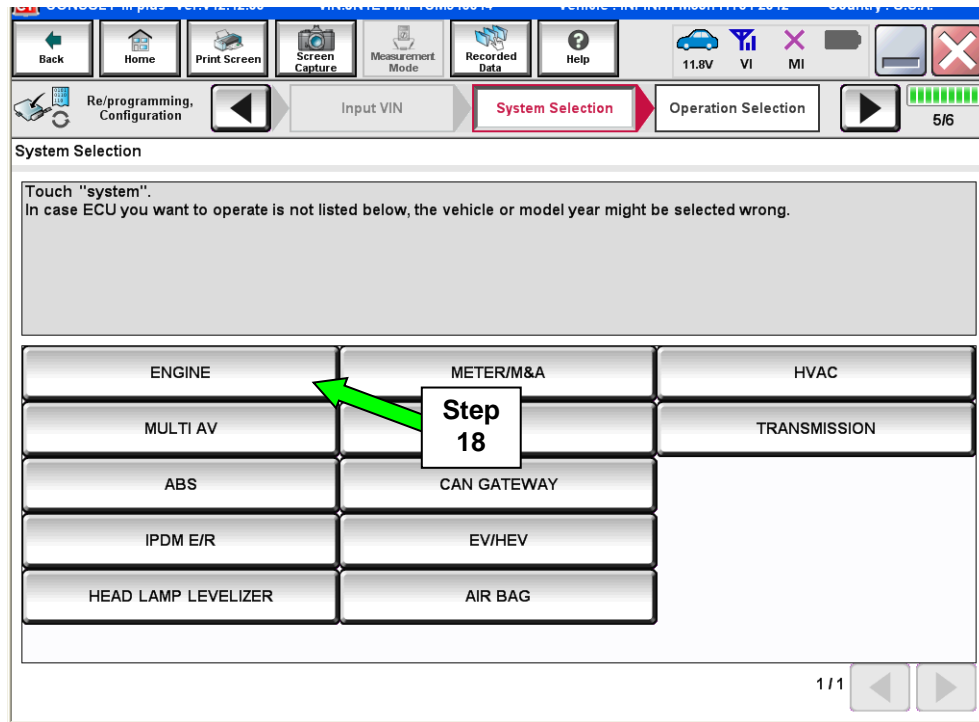


Figure 7

19. Select Reprogramming.

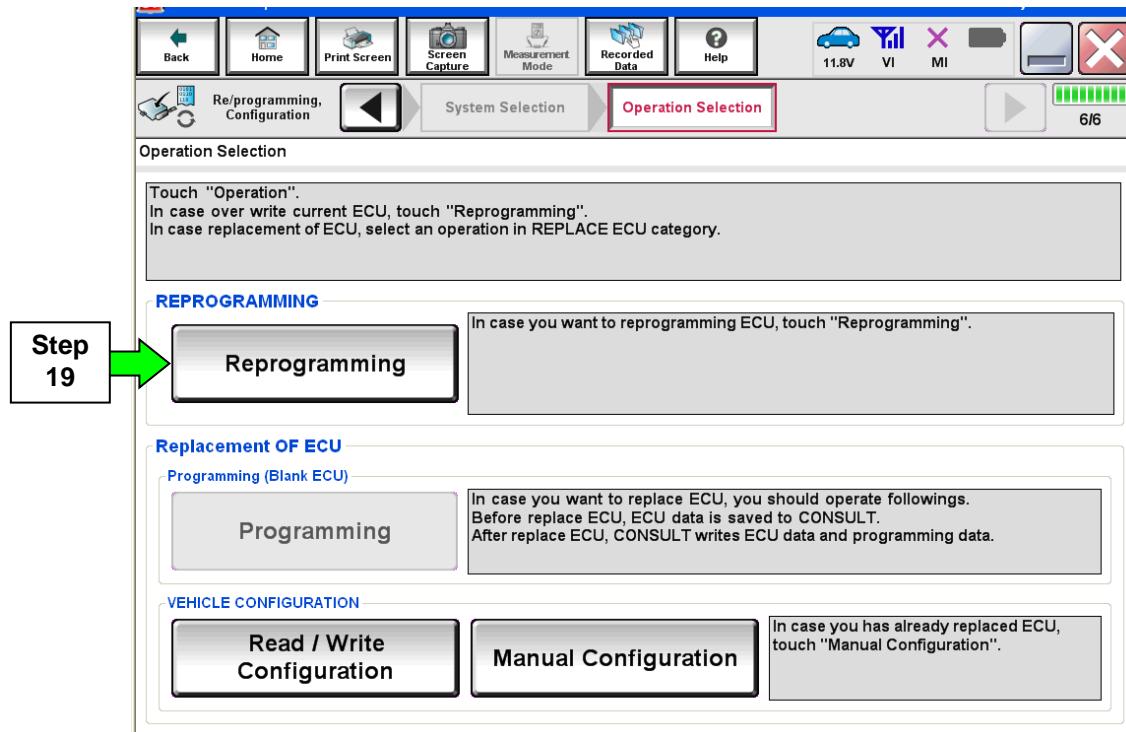


Figure 8

20. Find the ECM **Part Number** (see Figure 9) and write it on the repair order.

NOTE: This is the current Part Number (P/N).

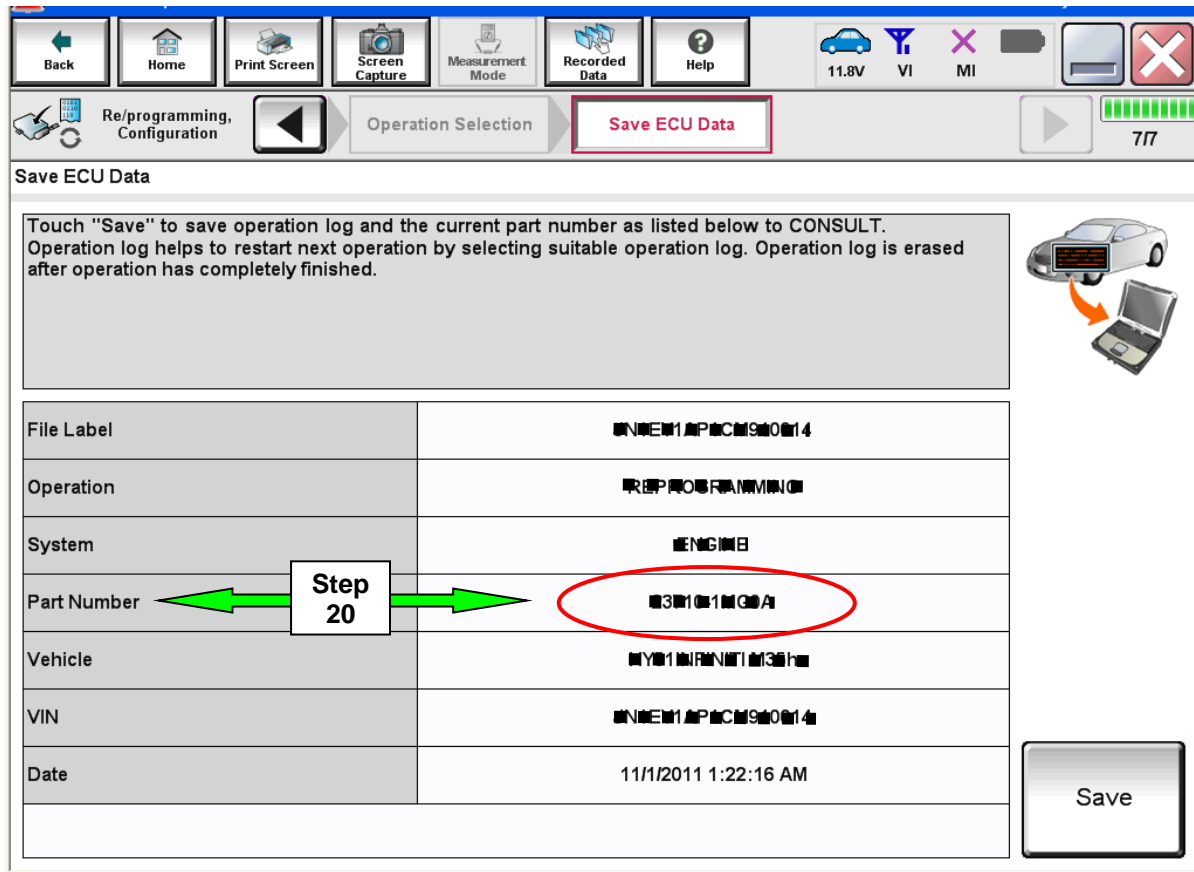


Figure 9

B. Compare the P/N you wrote down to the numbers in the **Current ECM Part Number** column in **Table A** below.

- If there is a match, this bulletin applies. Continue with the reprogramming procedure.
- If there is not a match, refer to the Claims Information and submit a claim using OP-CODE PC4041 (ECM Reprogram Not Needed).

Table A

Model	Current ECM Part Number: 23710 -
2016 Rogue	6FJ6A, 6FJ4A, 5HJ2A, 6FJ7A, 6FJ5A, 5HJ3A, 6FJ2A, 6FJ0A, 5HJ0A, 6FJ3A, 6FJ1A, 5HJ1A

21. Use arrows (if needed) to view and read all precautions.
22. Check the box confirming the precautions have been read.
23. Select **Next**.

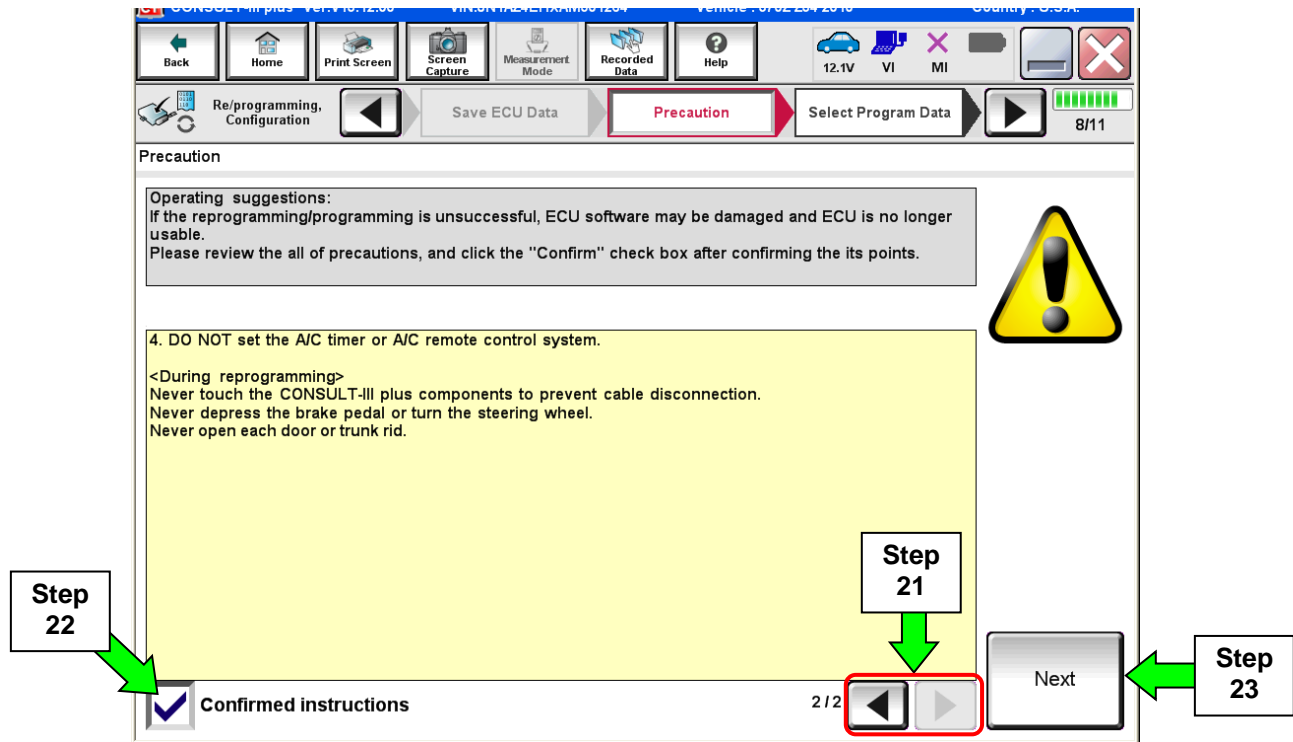


Figure 10

24. Read the **Current Part Number** and **Part Number After Reprogramming**. They should be different.
25. Select **Next**.

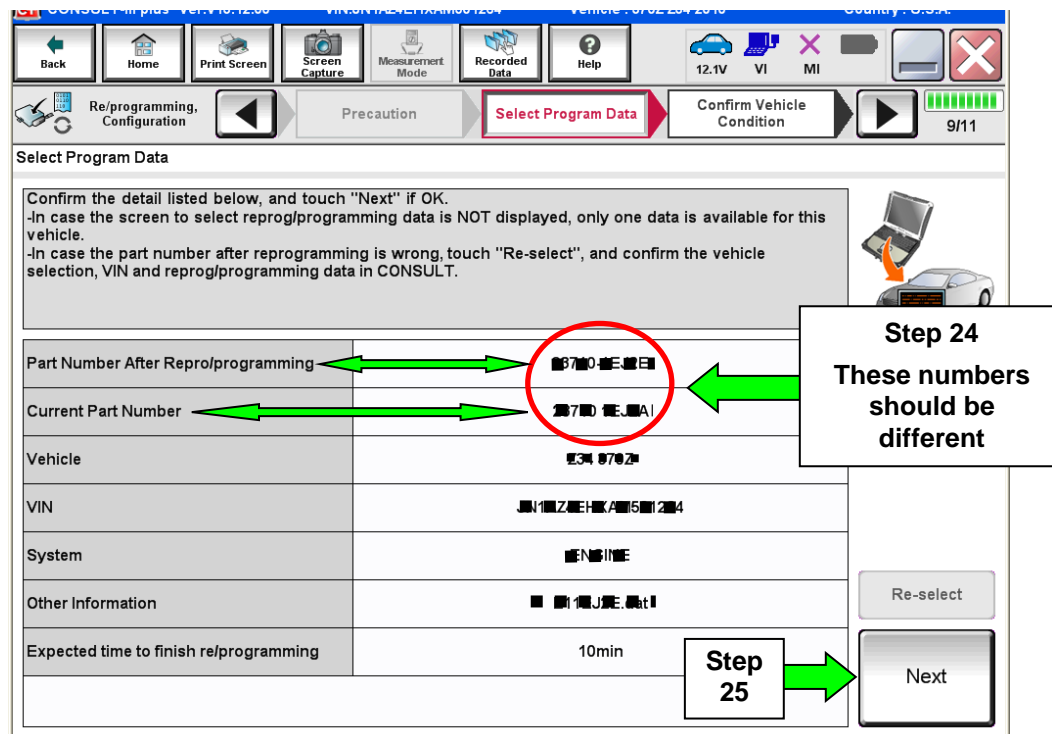


Figure 11

- If you get this screen and it is blank (no reprogramming listed), it means there is no matching ECM reprogramming available for this vehicle. If there is not a match, refer to the Claims Information and submit a claim using OP-CODE PC4041 (ECM Reprogram Not Needed).

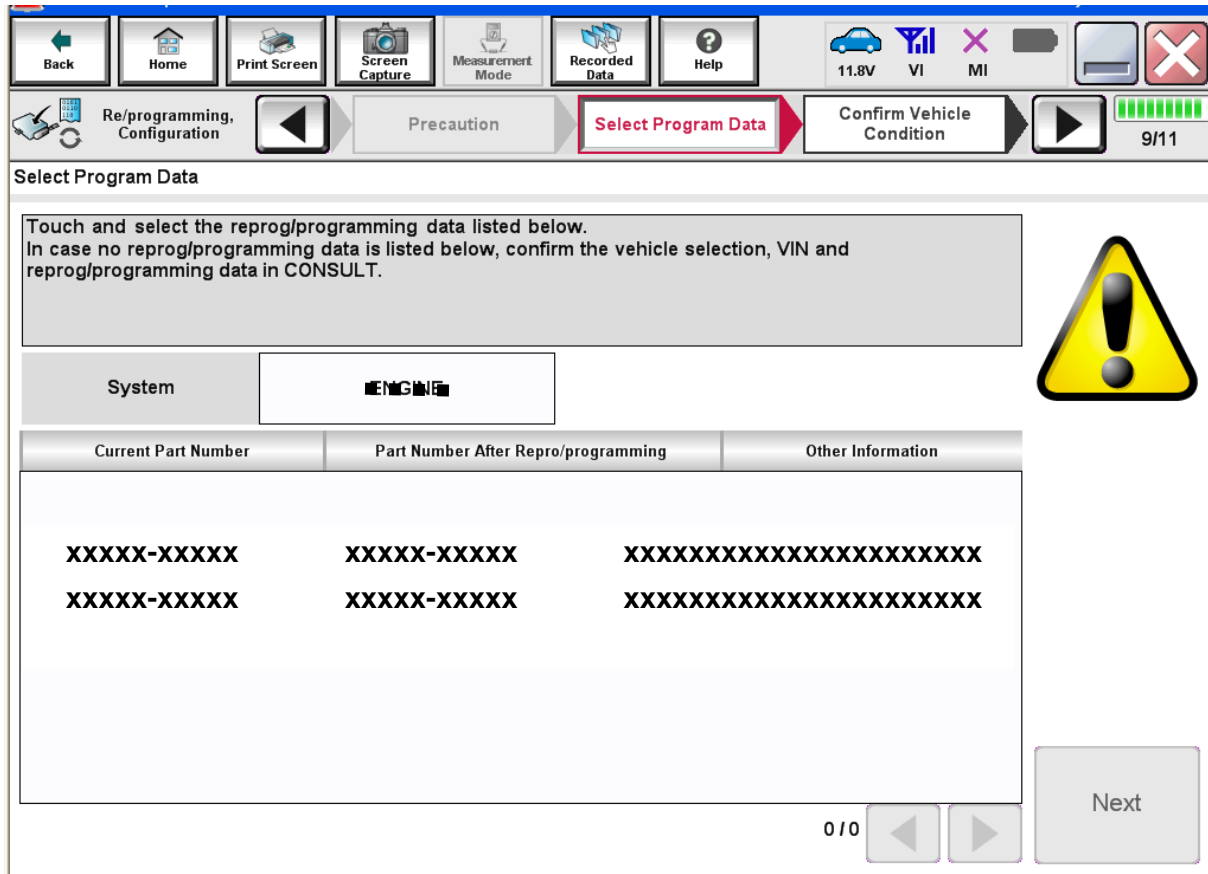


Figure 12

26. Make sure **OK** is highlighted **green** (battery voltage must be between **12.0 and 15.5 Volts**).

27. Select **Next**.

IMPORTANT: Battery voltage must stay between **12.0 and 15.5 Volts** during reprogramming or ECM reprogramming may be interrupted and ECM may be damaged.

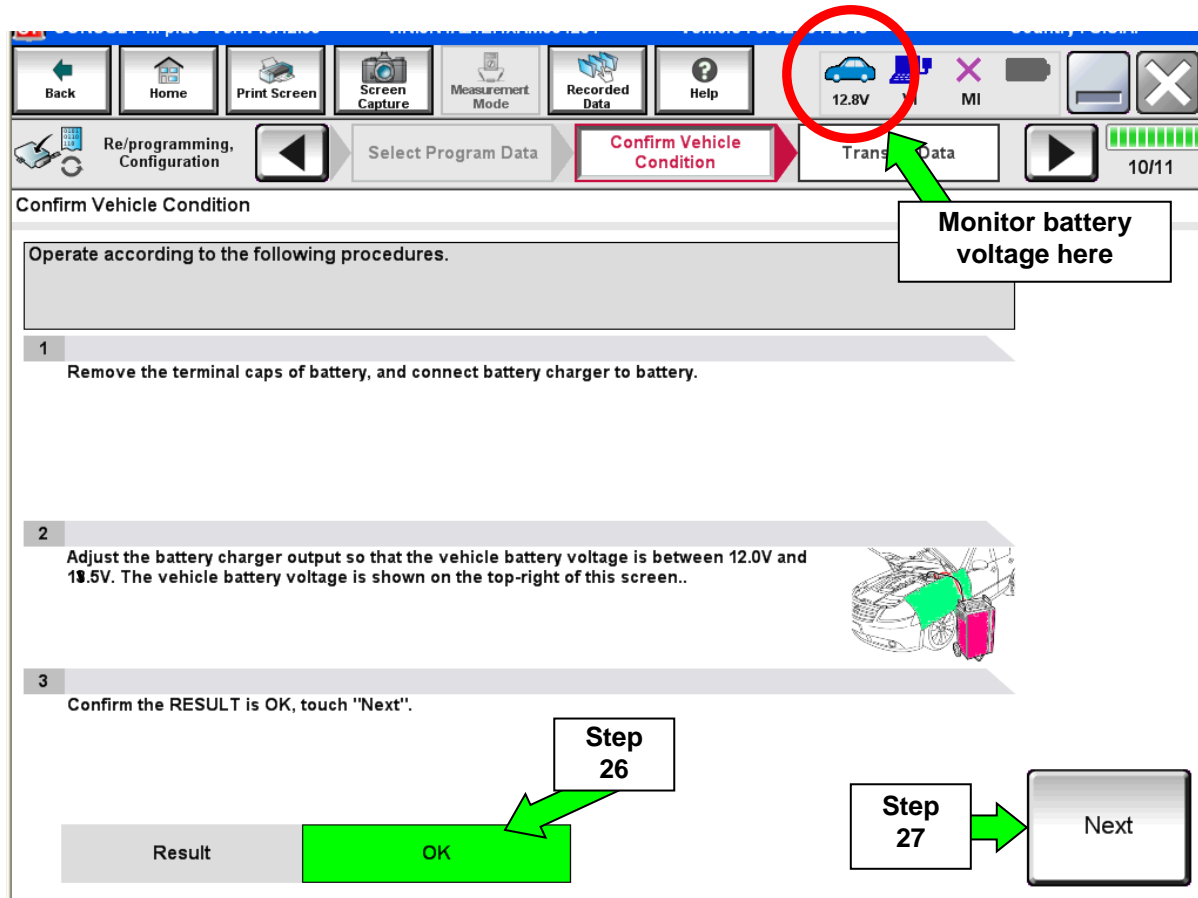


Figure 13

NOTE: In the next step, the reprogramming process will begin when **Start** is selected.

28. Select **Start**.

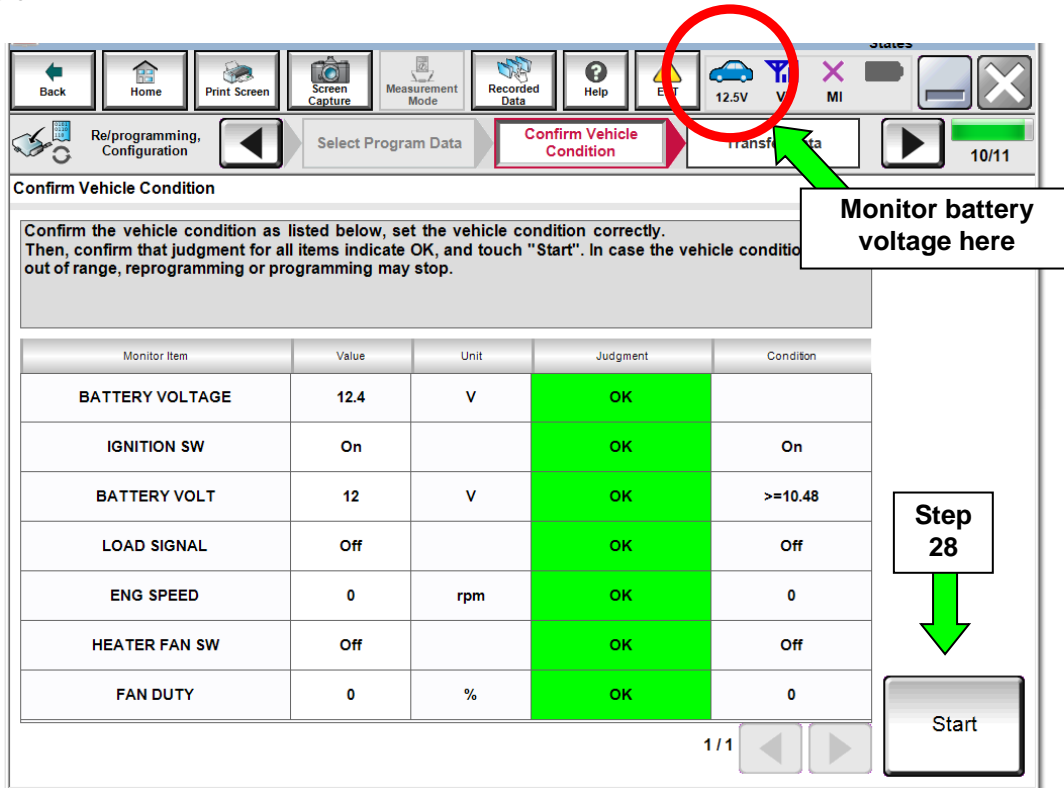


Figure 14

29. Wait for both progress bars to complete.

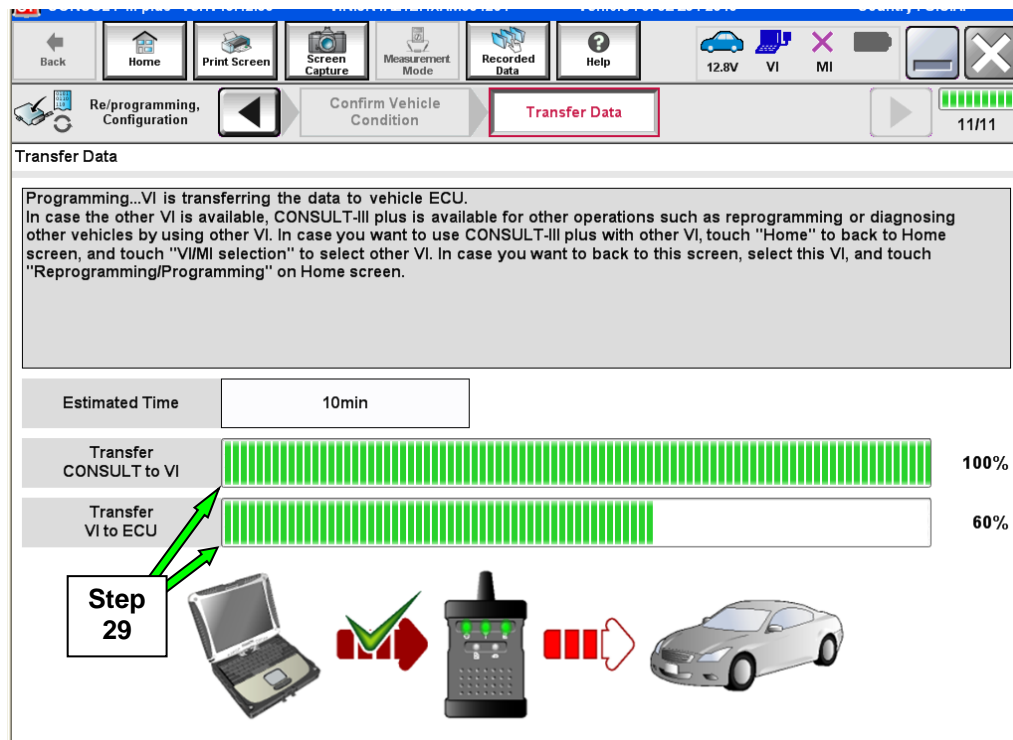


Figure 15

NOTE: If the message shown in Figure 16 appears, there is data stored in the plus VI. Select **“Yes”** to proceed with reprogramming.

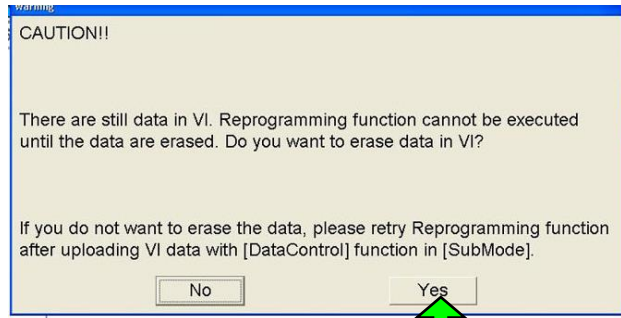


Figure 16

30. When the screen in Figure 17 displays, the reprogramming is complete.

NOTE: If the screen in Figure 17 does not display (reprogramming does not complete), refer to the information on the next page.

31. Disconnect the battery charger from the vehicle.

32. Select **Next**.

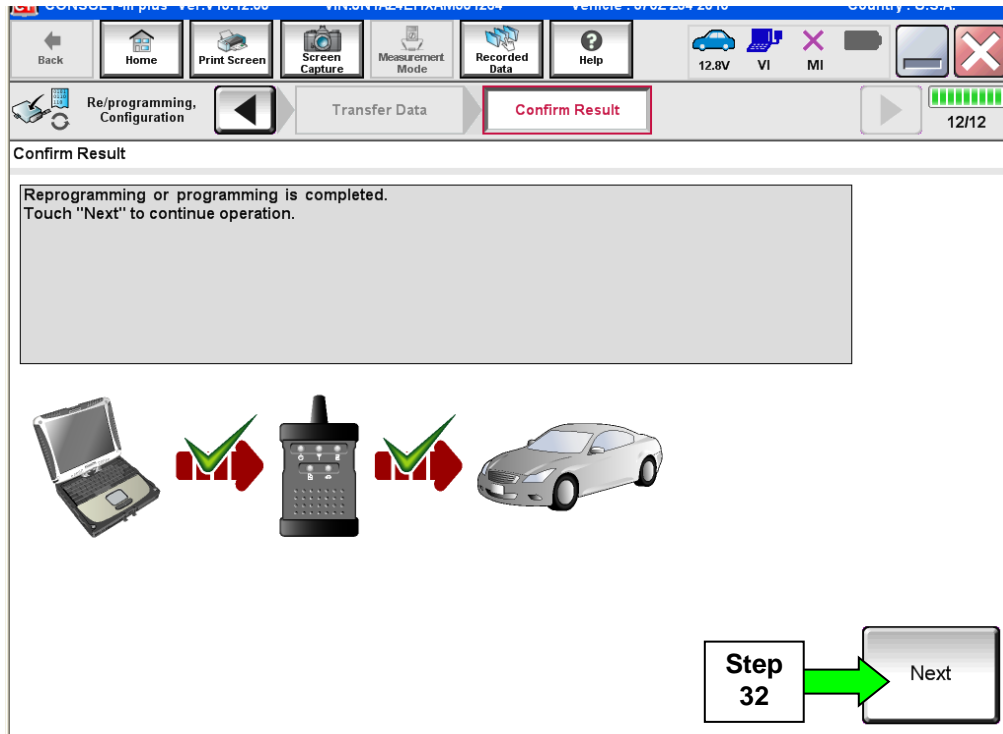


Figure 17

NOTE: Additional steps/operations are required before C-III plus will provide the final reprogramming confirmation report.

If reprogramming does not complete and the “!?” symbol displays as shown in Figure 18:

- Check battery voltage (12.0 – 15.5V).
- Ignition is ON, Ready Mode is OFF.
- External Bluetooth® devices are OFF.
- All electrical loads are OFF.
- **Select Retry and follow the on screen instructions.**

NOTE: Retry may not go through on first attempt and can be selected more than once.

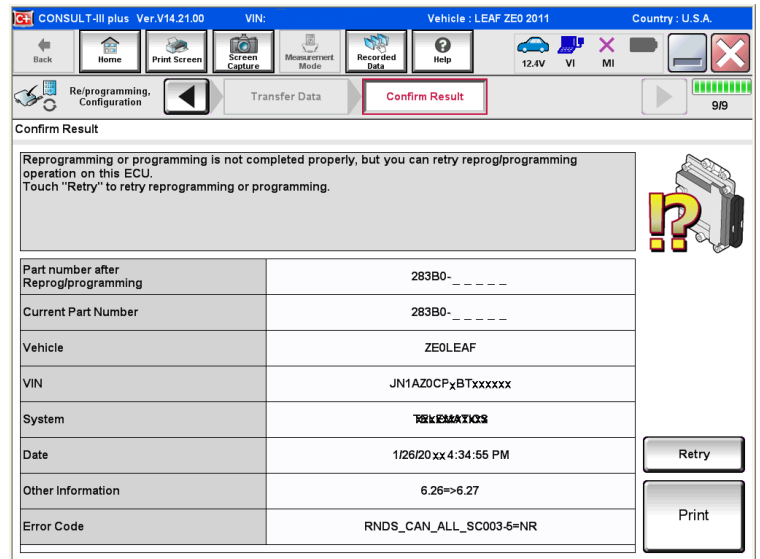


Figure 18

If reprogramming does not complete and the “X” symbol displays as shown in Figure 19:

- **Do not disconnect the plus VI or shut down C-III plus if reprogramming does not complete.**
- Check battery voltage (12.0 – 15.5V).
- CONSULT A/C adapter is plugged in.
- Ignition is ON, Ready Mode is OFF.
- Transmission in Park.
- All C-III plus / plus VI cables are securely connected.
- All C-III plus updates are installed.
- **Select Home, and then restart the reprogram procedure from the beginning.**

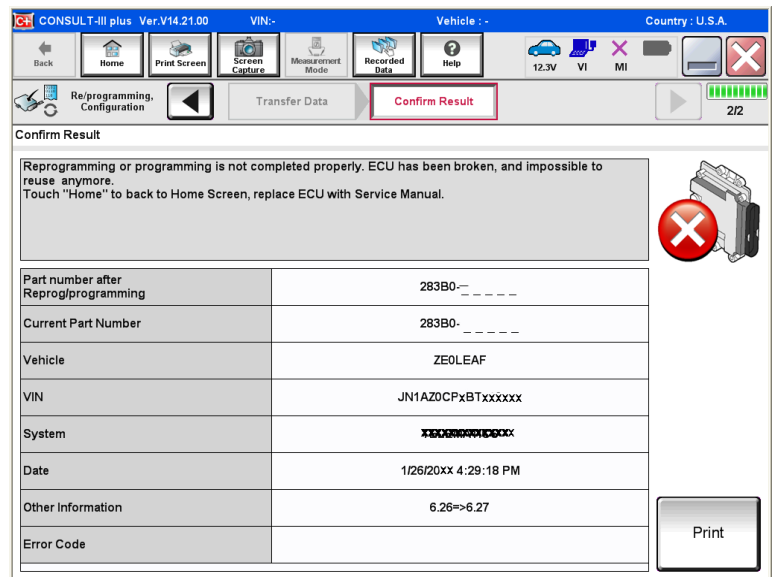


Figure 19

33. Perform **Throttle Valve Closed Position** procedure.

- Follow the on-screen instructions (**1, 2, and 3**) to complete the procedure.

Back Home Print Screen Screen Capture Measurement Mode Recorded Data Help 12.8V VI MI 13/16

Re/programming, Configuration Confirm Result **Throttle Valve Closed Position** Idle Air Volume Learning 13/16

Throttle Valve Closed Position

Operate according to the following procedures.

1
Make sure that accelerator pedal is fully released, turn ignition ON, and turn ignition OFF. And then the count down of 10 seconds starts.

Current status of ignition switch ON

Time

2
Make sure that throttle valve moves during count down of 10 seconds by confirming the operating sound.

3
Touch "Next" to go to next operation.

Next

Figure 20

34. For **ECM** reprogramming: Perform **Idle Air Volume Learn (IAVL)**.

a. Turn the ignition ON (engine running or “ready to drive” position).

- For conventional vehicles, start the engine and let it idle.

b. Select **Next**.

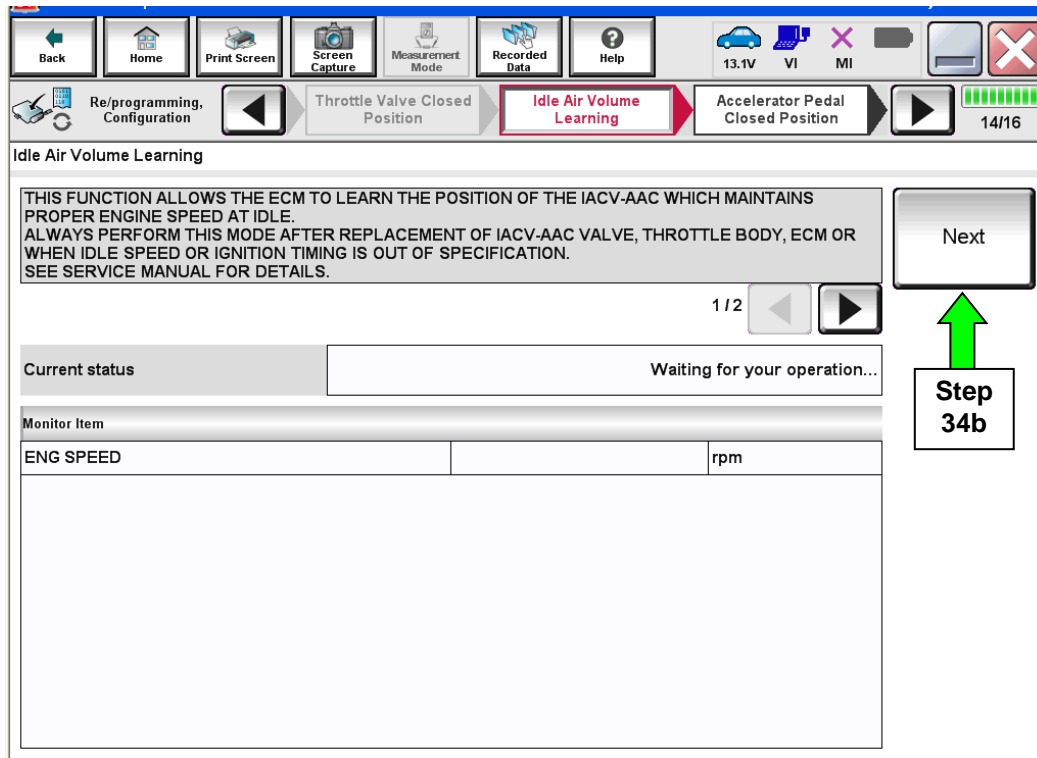


Figure 21

c. Select **Start**.

d. Wait for IAVL to complete.

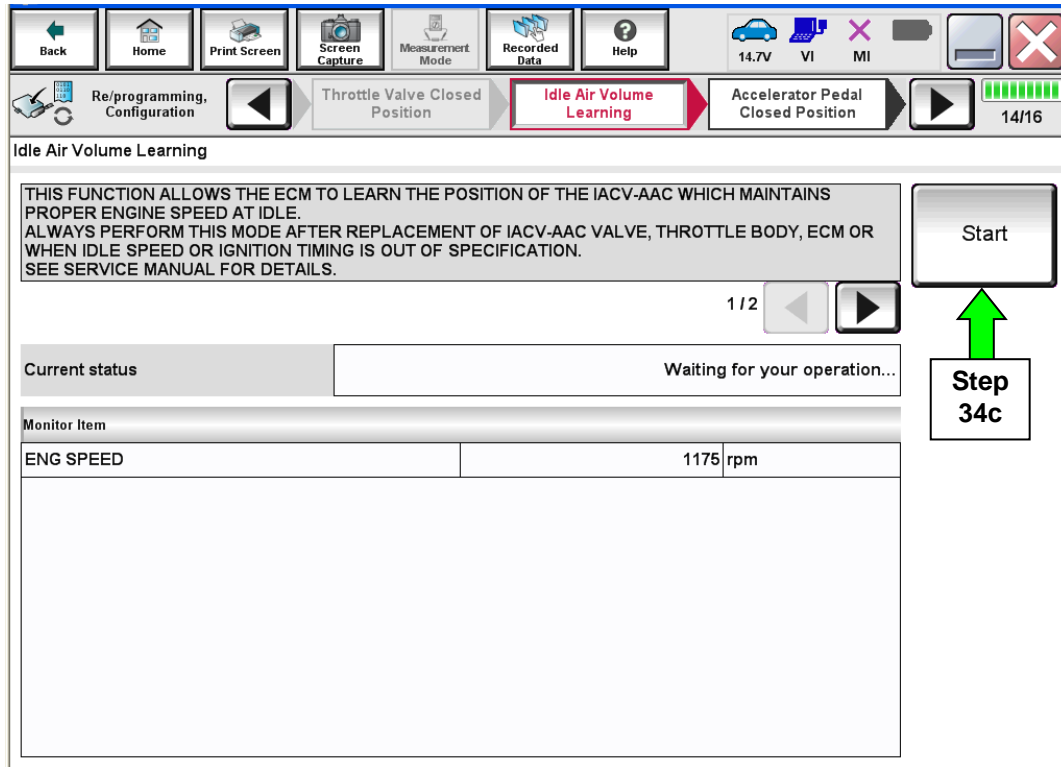


Figure 22

NOTE:

- Listed below are common required conditions for IAVL to complete.
- If IAVL does not complete within a few minutes, a condition may be out of range.
- Refer to the appropriate **Electronic Service Manual (ESM)** for specific conditions required for the vehicle you are working on.
 - Hybrid only – Li-ion battery charging status: 50% or more
 - Engine coolant temperature: 70 – 100° C (158 – 212°F)
 - Battery voltage: More than 12.9V (At idle)
 - Selector lever: P or N
 - Electric load switch: OFF (Air conditioner, headlamp, rear window defogger)
 - Steering wheel: Neutral (Straight-ahead position)
 - Vehicle speed: Stopped
 - Transmission: Warmed up

e. Select **Next**.

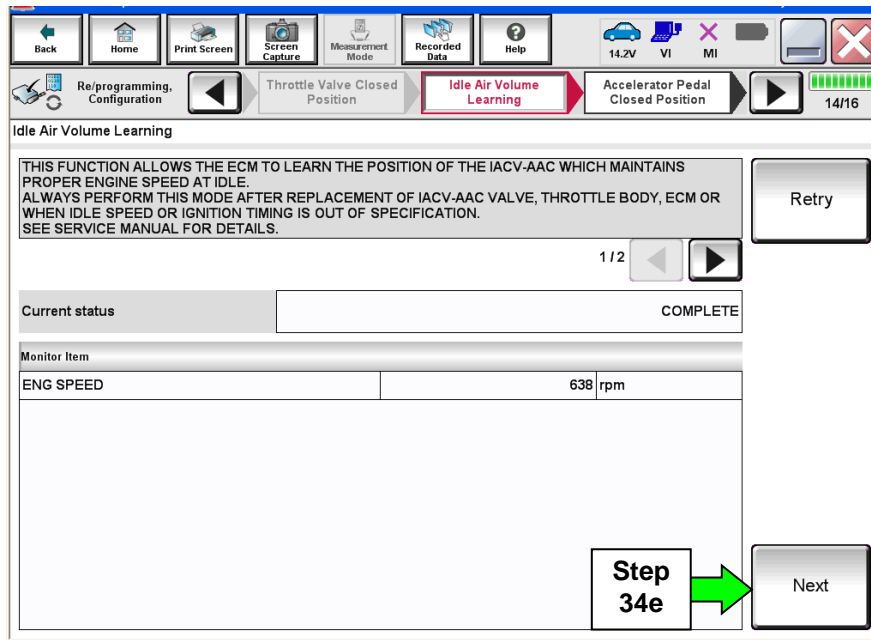


Figure 23

35. For **ECM** reprogramming: Follow the on screen instructions to complete **Accelerator Pedal Close Position Learning**.

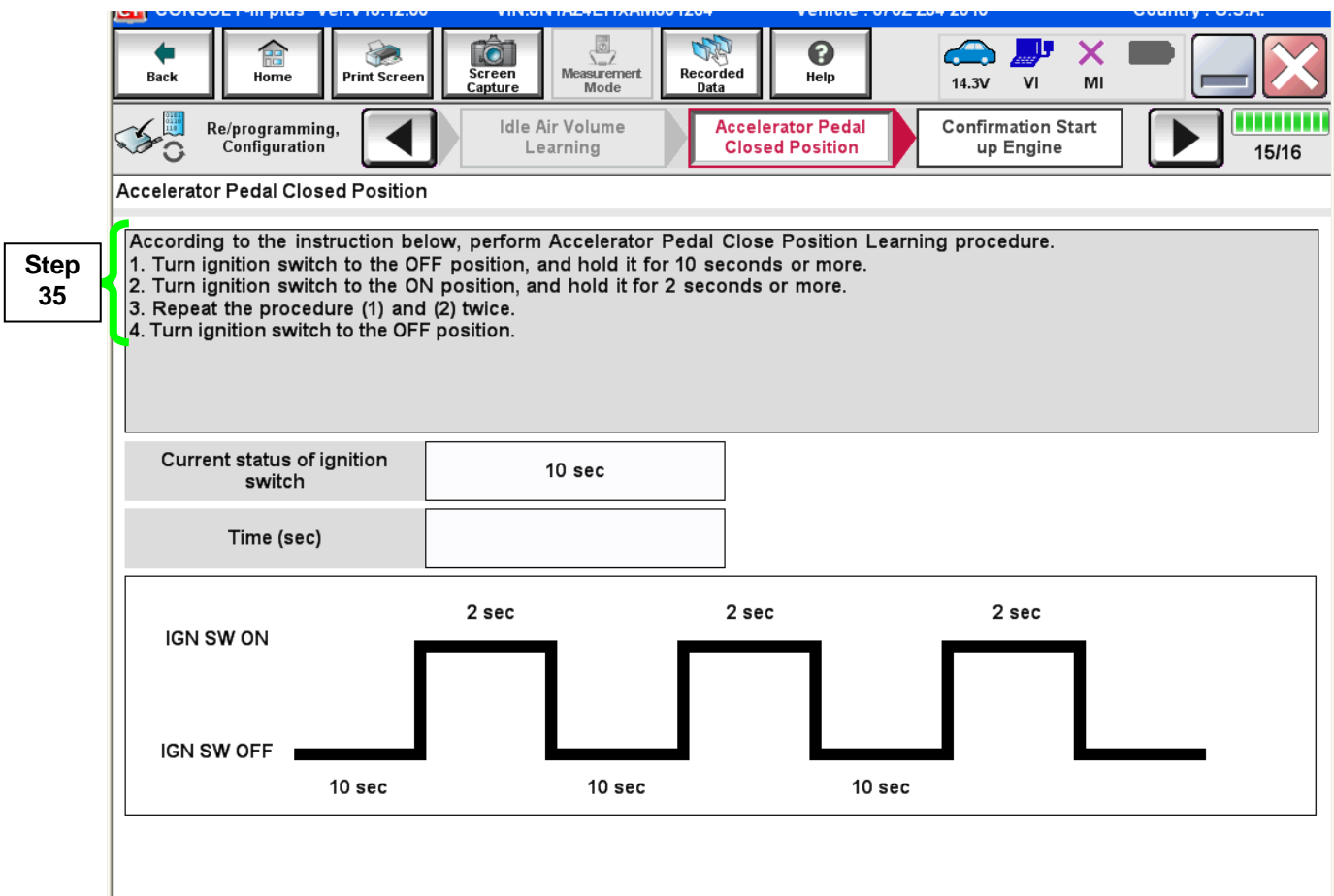


Figure 24

36. Confirm engine start-up.

- a. Select **Next**.

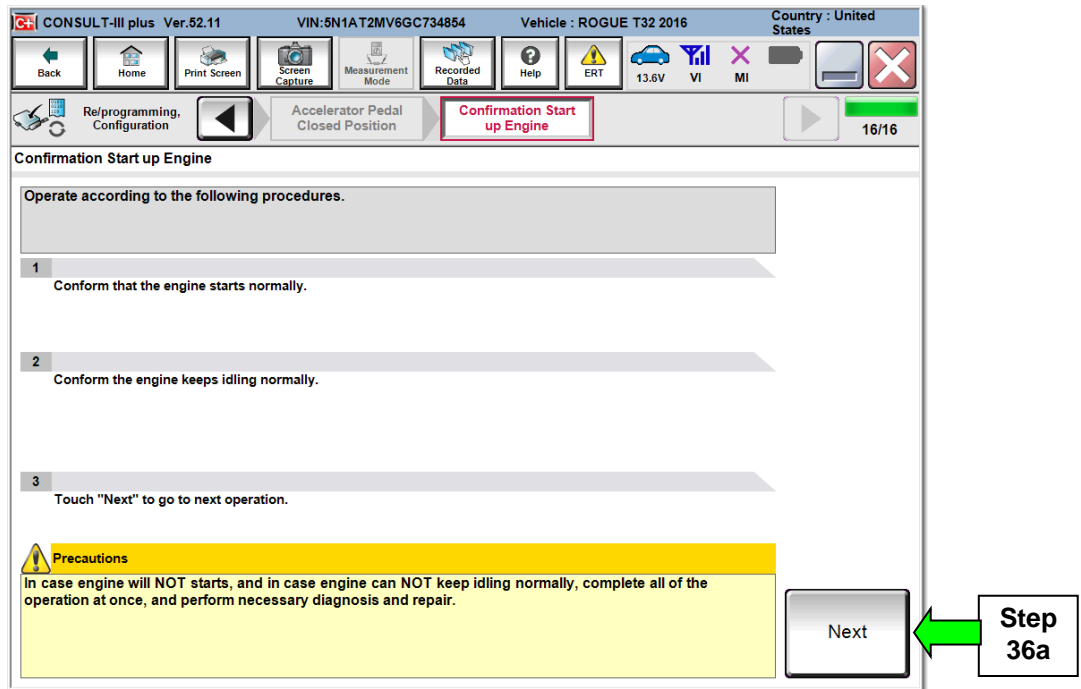


Figure 25

37. Erase all DTCs as follows:

- a. Turn the ignition OFF
- b. Turn the Ignition ON.
- c. Wait for DTC erase to complete.

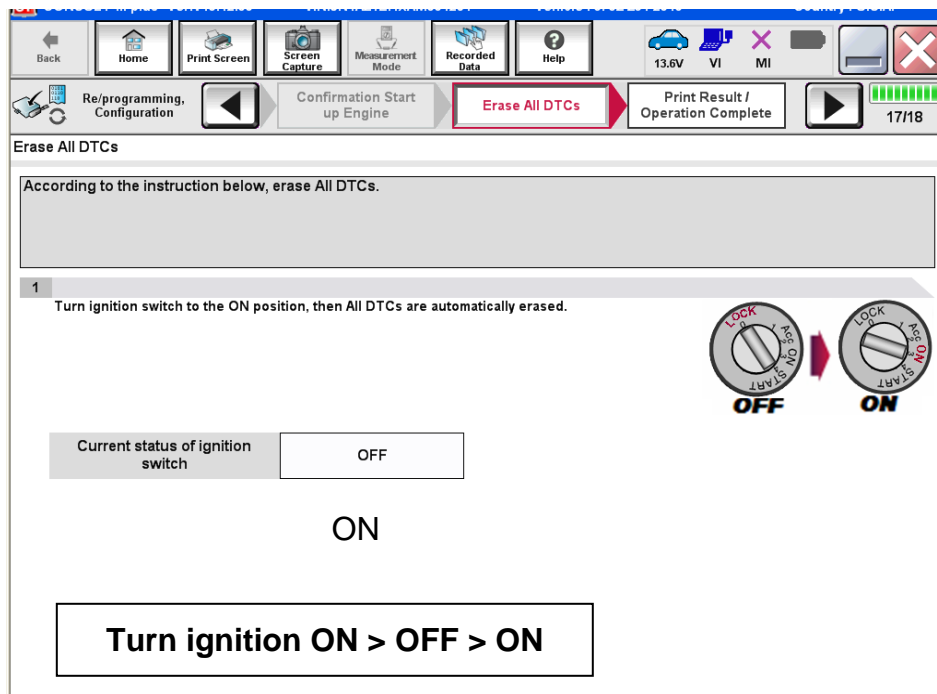


Figure 26

38. Verify the before and after part numbers are different.

39. Print a copy of this screen (Figure 27) and attach it to the repair order.

40. Select **Confirm**.

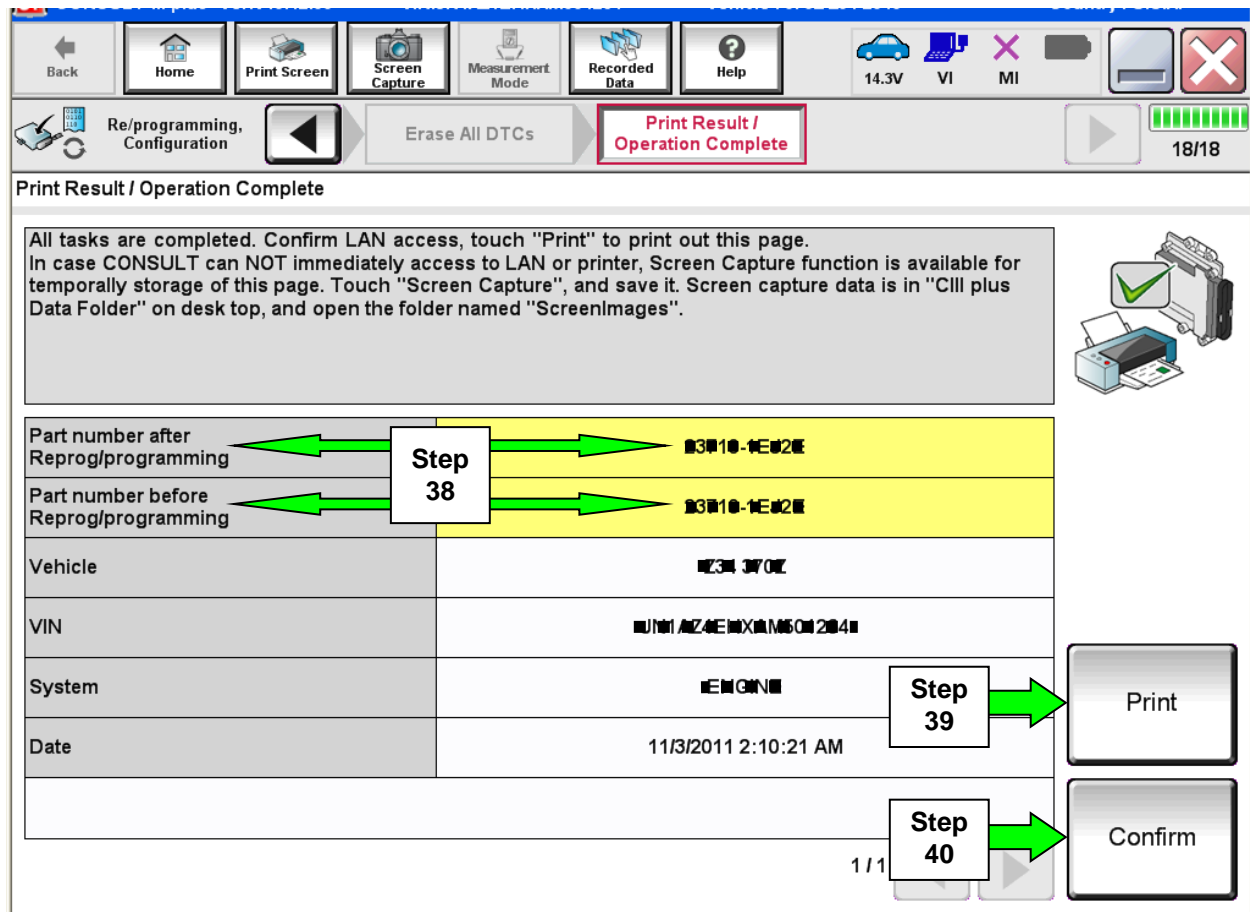


Figure 27

NOTE: If you cannot print the above screen:

- Select Screen Capture.
 - Name the file.
 - Save the file in My Documents.
- A copy of the screen is now saved in the CONSULT PC. It can be retrieved and printed at a later time.

41. Close C-III plus.

42. Turn the ignition OFF.

43. Disconnect the plus VI from the vehicle.

CLAIMS INFORMATION

Submit a Campaign (CM) line claim using the following claims coding:

CAMPAIGN (CM) I.D. #	DESCRIPTION	OP CODE	FRT
PC404	ECM Reprogram	PC4040	0.5 hrs.

OR

CAMPAIGN (CM) I.D. #	DESCRIPTION	OP CODE	FRT
PC404	ECM Reprogram Not Needed	PC4041	0.3 hrs.

