



SERVICE BULLETIN

Classification:

EL15-021

Reference:

NTB15-068

Date:

August 7, 2015

2013-2015 SENTRA; RATTLE AND/OR BRAKE PEDAL VIBRATION INSIDE VEHICLE AT IDLE IN DRIVE

APPLIED VEHICLES: 2013-2015 Sentra (B17)

APPLIED VIN AND DATES: 2013-2014 Sentra (B17) **All**

2015 Sentra (B17) Built before 3N1AB7AP(*)FY 274591 / July 1, 2015
Built before 3N1AB7AP(*)FL 668321 / July 1, 2015

IF YOU CONFIRM

- A rattle noise inside the vehicle coming from the engine compartment or instrument panel and/or a brake pedal vibration is present at idle in drive.

And

- The engine room harness is in contact with the air filter assembly (Figure 1).

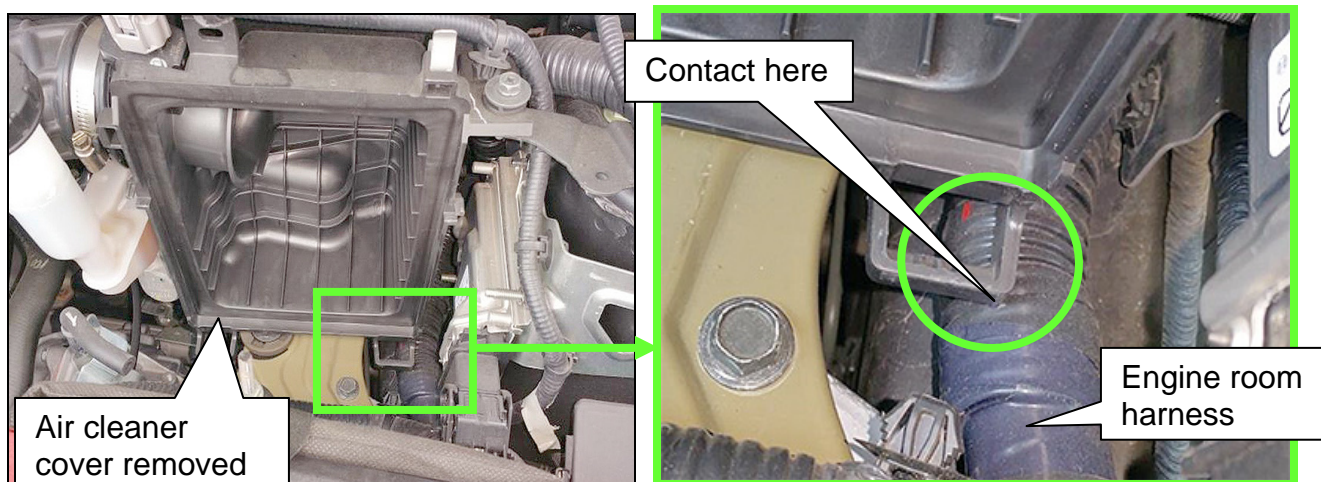


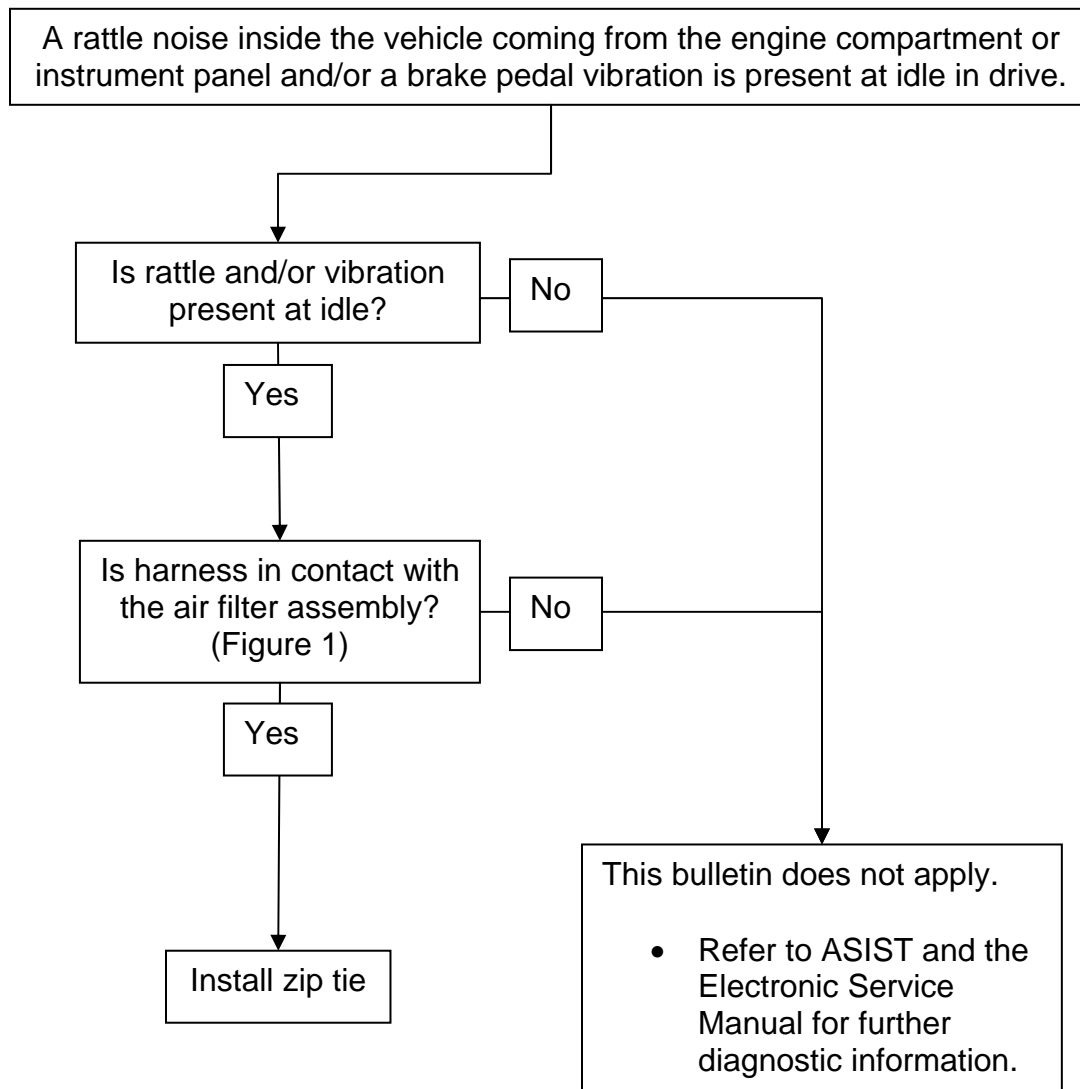
Figure 1

ACTION

- Install a zip tie to secure the engine room harness to the driver's side frame rail.

Nissan Bulletins are intended for use by qualified technicians, not 'do-it-yourselfers'. Qualified technicians are properly trained individuals who have the equipment, tools, safety instruction, and know-how to do a job properly and safely. NOTE: If you believe that a described condition may apply to a particular vehicle, DO NOT assume that it does. See your Nissan dealer to determine if this applies to your vehicle.

INSPECTION OVERVIEW



SERVICE PROCEDURE

1. Remove the air cleaner assembly from the vehicle.
 - Refer to the Electronic Service Manual (ESM), section **EM – Engine Mechanical** for removal and reinstallation.

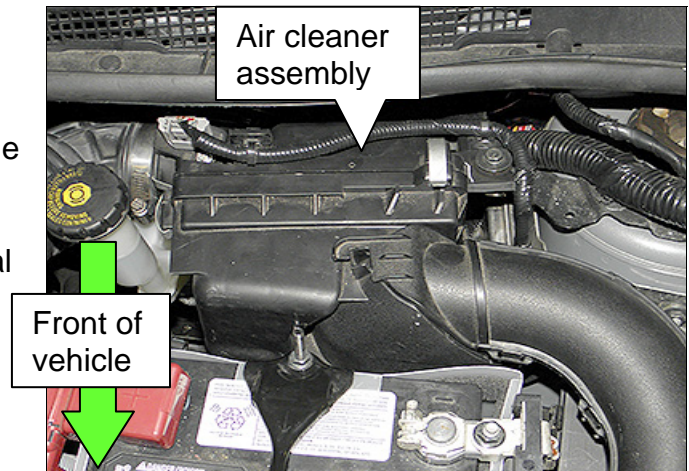


Figure 2

2. Loosely attach the zip tie to the engine room harness.
3. Snap the zip tie into the frame rail hole shown in Figure 3.

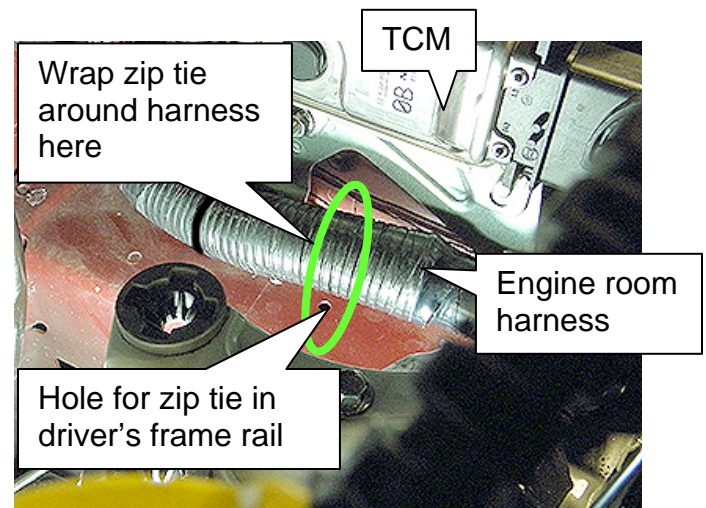


Figure 3

4. Tighten the zip tie around the engine room harness (Figure 4) and then remove (cut off) the excess zip tie.
5. Reassemble the vehicle in the reverse order.

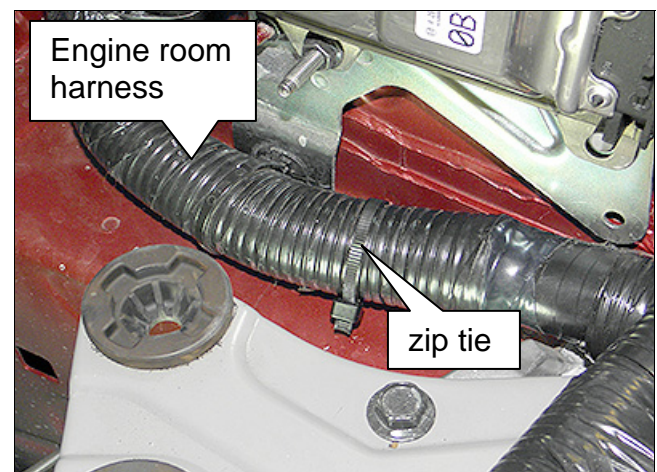


Figure 4

PARTS INFORMATION

| DESCRIPTION | PART # | QUANTITY |
|-------------|-------------|----------|
| Zip Tie | 24225-79960 | 1 |

CLAIMS INFORMATION

Submit a Primary Operation (PO) type line claim using the following claims coding:

| DESCRIPTION | OP CODE | SYM | DIA | FRT |
|-----------------|---------|-----|-----|-----|
| Install Zip Tie | DX46AA | ZL | 46 | 0.2 |

