

Classification:

EC13-019d

Reference:

ITB13-054d

COPYRIGHT© NISSAN NORTH AMERICA, INC.

Date:

July 22, 2015

INFINITI; MIL ON WITH DTC P0101 AND/OR P010B

This bulletin has been amended. The APPLIED VEHICLES and Table A on page 4 and 5 have been updated. Please discard all previous versions of this bulletin.

APPLIED VEHICLES: 2011-2012 G25 Sedan (V36) 2011-2013 G37 Sedan (V36)
2015 Q40 Sedan (V36) 2011-2013 G37 Convertible (V36)
2011-2013 G37 Coupe (V36) 2014-2015 Q60 Convertible (V36)
2014-2015 Q60 Coupe (V36) 2013 JX35 (L50)
2013 EX37 (J50) 2014-2015 Q50 (V37)
2014-2015 QX50 (J50) 2012-2013 M37 (Y51)
2013 FX37 (S51) 2014-2015 Q70 (Y51)
2014-2015 QX70 (S51)

APPLIED ENGINE V6 (6-cyl)

NOTE: Does not apply to Hybrid models.

IF YOU CONFIRM:

The MIL is ON with DTC P0101 and/or P010B (MAF SEN/CIRCUIT-B1/B2)

and

There are no drivability issues.

ACTION:

1. Refer to step 6 in the **SERVICE PROCEDURE** to confirm this bulletin applies to the vehicle you are working on.
2. If this bulletin applies, reprogram the ECM.

NOTE: If this bulletin does apply (the ECM needs to be reprogrammed), DO NOT replace the mass air flow sensor(s).

IMPORTANT: The purpose of **ACTION** (above) is to give you a quick idea of the work you will be performing. You **MUST** closely follow the entire **SERVICE PROCEDURE** as it contains information that is essential to successfully completing this repair.

Infiniti Bulletins are intended for use by qualified technicians, not 'do-it-yourselfers'. Qualified technicians are properly trained individuals who have the equipment, tools, safety instruction, and know-how to do a job properly and safely. **NOTE:** If you believe that a described condition may apply to a particular vehicle, **DO NOT** assume that it does. See your Infiniti dealer to determine if this applies to your vehicle.

SERVICE PROCEDURE

NOTE:

- Most instructions for reprogramming with CONSULT-III plus (C-III plus) are displayed on the CONSULT PC screen.
- If you are not familiar with the reprogramming procedure, *click here*. This will link you to the "CONSULT- III plus (C-III plus) Reprogramming" general procedure.
- Take the vehicle for a 10 minute drive in order to meet the following Idle Air Volume Learn (IAVL) conditions:
 - Engine coolant temperature: 70 - 105°C (158 - 221°F)
 - Battery voltage: More than 12.9V (at idle)
 - Transmission: Warmed up



Figure A

NOTE: After reprogramming is complete, you will be required to perform Throttle Valve Closed Position, Idle Air Volume Learn, Accelerator Closed Position, and DTC erase. The above conditions are required for IAVL to complete.

CAUTION:

- Connect the GR8 to the 12V battery and set to ECM power supply mode.
If the vehicle battery voltage drops below 12.0V or above 15.5V during reprogramming, the ECM may be damaged.
- Be sure to turn OFF all vehicle electrical loads.
If a vehicle electrical load remains ON, the ECM may be damaged.
- Be sure to connect the AC Adapter.
If the CONSULT PC battery voltage drops during reprogramming, the process will be interrupted and the ECM may be damaged.
- Turn off all external Bluetooth® devices (e.g., cell phones, printers, etc.) within range of the CONSULT PC and the VI. If Bluetooth® signal waves are within range of the CONSULT PC during reprogramming, reprogramming may be interrupted and the ECM may be damaged.

1. Connect the CONSULT PC to the vehicle to begin the reprogramming procedure.
2. Open / start C-III plus.
3. Wait for the plus VI to be recognized.
 - The Serial No. will display when the plus VI is recognized.
4. Select Re/programming, Configuration.

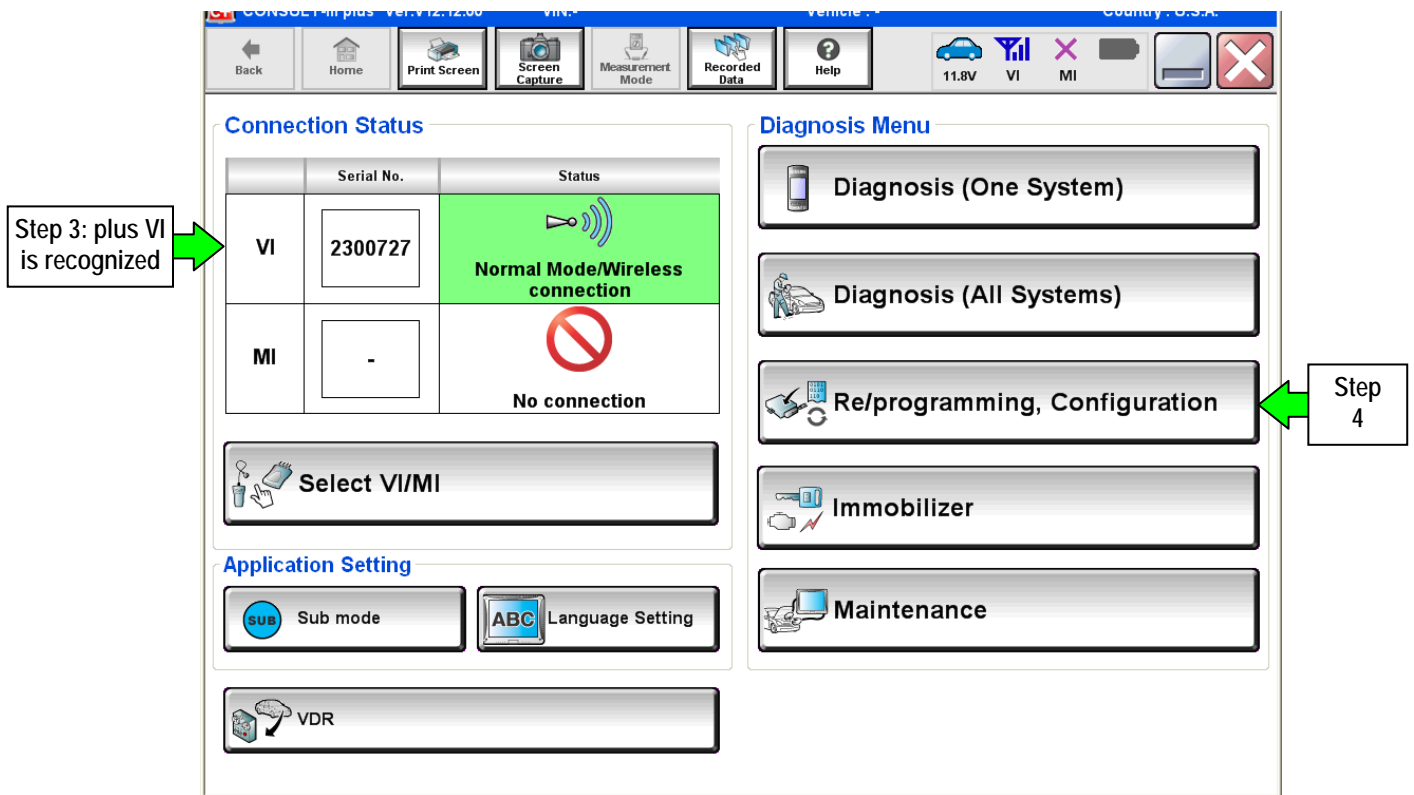


Figure 1

5. Follow the on-screen instructions and navigate the C-III plus to the screen shown in Figure 2 on the next page.

6. When you get to the screen shown in Figure 2, confirm this bulletin applies as follows.

A. Find the ECM **Part Number** and write it on the repair order.

NOTE: This is the current ECM Part Number (P/N).

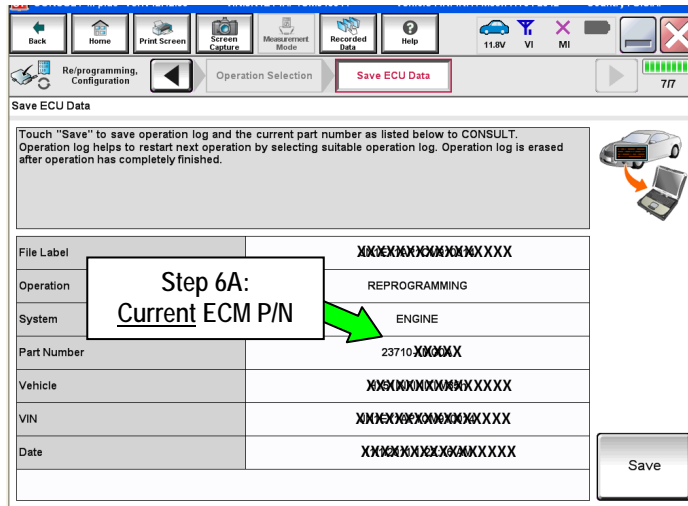


Figure 2

B. Compare the P/N you wrote down to the numbers in the **Current ECM Part Number** column in **Table A** below and on the next two pages.

- If there is a match, this bulletin applies. Continue with the reprogramming procedure.
- If there is not a match, this bulletin does not apply. Close C-III plus and refer to ASIST for further diagnostic information.

Table A

Model	Model Year	Current ECM Part Number: 23710-
M37	2012	1MV0A, 1MV1A, 1MV2A, 1MV3A, 1MV4A, 1MV5A
		1MV0B, 1MV1B, 1MV2B, 1MV3B, 1MV4B, 1MV5B
		1MV0C, 1MV1C, 1MV2C, 1MV3C, 1MV4C, 1MV5C
		1MV0D, 1MV1D, 1MV2D, 1MV3D, 1MV4D, 1MV5D
		1MV0E, 1MV1E, 1MV2E, 1MV3E, 1MV4E, 1MV5E
	2013	1PR0A, 1PR1A, 1PR2A, 1PR3A, 1PR4A, 1PR5A
		1PR0B, 1PR1B, 1PR2B, 1PR3B, 1PR4B, 1PR5B
		1PR2C, 1PR3C, 1PR4C, 1PR5C 1PR0D, 1PR1D
Q70 with V6 engine	2014	6AH0A, 6AH1A, 6AH2A, 6AH3A, 6AH4A, 6AH5A, 6AH6A, 6AH7A
	2015	6AE0A, 6AE1A, 6AE2A, 6AE3A, 6AE4A, 6AE5A, 6AE6A, 6AE7A
JX35	2013	3JA1A, 3JA2A, 3JA3A, 3JA4A, 3JA5A, 3JA6A
		3JA1B, 3JA2B, 3JA3B, 3JA4B, 3JA5B, 3JA6B
		3JA1C, 3JA2C, 3JA3C, 3JA4C, 3JA5C, 3JA6C
		3JA1D, 3JA2D, 3JA3D, 3JA4D, 3JA5D, 3JA6D
		3JA1E, 3JA2E, 3JA3E, 3JA4E, 3JA5E, 3JA6E
G25 Sedan	2011	1NM0E, 1NM1E
		JJ86B, JJ87B
	2012	1VW2C, 1VW3C
		1VW2D, 1VW3D

Table A (continued)

Model	Model Year	Current ECM Part Number: 23710-
G37: Sedan, Coupe, and Convertible	2011	1NX4B
		1NX1C, 1NX2C, 1NX3C, 1NX6C, 1NX7C
		1NX0D, 1NX4D
		1NX1E, 1NX2E, 1NX3E, 1NX6E, 1NX7E
		1NY4B, 1NY5B
		1NY0D, 1NY4D, 1NY5D
		1NY1C, 1NY2C, 1NY3C
		1NY1E, 1NY2E, 1NY3E
		1VU0D, 1VU2D, 1VU1C, 1VU1E, 1VU3C, 1VU3E, 1VU6C, 1VU6E
		1VU7C, 1VU7E, 1VU4B, 1VU4D, 1VU5B, 1VU5D
		3WN6B, 3WN7B, 3WN8B
		3WP4B, 3WP5B, 3WP6B, 3WP7B
		3WP7D
	2012	EY00A, EY01A, EY02A, EY03A, EY04A, EY05A, EY06A
		EY00B, EY01B, EY02B, EY03B, EY04B, EY05B, EY06B
		EY00C, EY01C, EY02C, EY03C, EY04C, EY05C, EY06C
		EY00D, EY01D, EY02D, EY03D, EY04D, EY05D, EY06D
		1JT0A, 1JT1A, 1JT2A, 1JT3A, 1JT4A, 1JT5A, 1JT6A
		1JT0B, 1JT1B, 1JT2B, 1JT3B, 1JT4B, 1JT5B, 1JT6B
		1JT0C, 1JT1C, 1JT2C, 1JT3C, 1JT4C, 1JT5C, 1JT6C
		1JT0D, 1JT1D, 1JT2D, 1JT3D, 1JT4D, 1JT5D, 1JT6D
		1VZ0A, 1VZ1A, 1VZ2A, 1VZ3A, 1VZ4A
		1VZ0B, 1VZ1B, 1VZ2B, 1VZ3B, 1VZ4B
		1VZ0C, 1VZ2C, 1VZ1C, 1VZ3C, 1VZ4C
		1VZ0D, 1VZ1D, 1VZ2D, 1VZ3D, 1VZ4D
		1VZ0E, 1VZ1E, 1VZ2E, 1VZ3E
	2013	CT60A, CT61A CT62A, CT63A, CT64A
		CT60B, CT61B, CT62B, CT63B, CT64B
		JK35A, JK36A, JK37A, JK38A
		JK35B, JK36B, JK37B, JK38B
		JK39A
		JK39B
		JK50A, JK51A
JK50B, JK51B		
3LW0A, 3LW1A, 3LW2A, 3LW3A, 3LW4A, 3LW5A, 3LW6A		
3LW0B, 3LW1B, 3LW2B, 3LW3B, 3LW4B, 3LW5B, 3LW6B		
2014	3WJ0A, 3WJ1A, 3WJ2A, 3WJ3A, 3WJ4A, 3WJ5A, 3WJ6A	
	3WJ0B, 3WJ1B, 3WJ2B, 3WJ3B, 3WJ4B, 3WJ5B, 3WJ6B	
	3WK0A, 3WK1A, 3WK2A, 3WK3A, 3WK4A	
	3WK0B, 3WK1B, 3WK2B, 3WK3B, 3WK4B	
	KK00A, KK01A, KK02A, KK03A, KK04A	
2015	6WA0A, 6WA1A, 6WA2A, 6WA3A, 6WA4A, 6WA5A, 6WA6A	
Q40 Sedan	2015	6WJ0A, 6WJ1A

Table A (continued)

EX37	2013	1BN1A, 1BN2A, 1BN3A, 1BN4A, 1BN1B, 1BN2B, 1BN3B, 1BN4B
QX50	2014-2015	3WW0A, 3WW1A, 3WW2A, 3WW3A 3WW0C, 3WW1C, 3WW2C, 3WW3C 5UH0A, 5UH1A, 5UH2A, 5UH3A 5UH0B, 5UH1B, 5UH2B, 5UH3B
FX37	2013	1WY4A, 1WY5A, 1WY6A, 1WY7A 1WY4B, 1WY5B, 1WY6B, 1WY7B
QX70	2014-2015	3GT0A, 3GT1A, 3GT2A, 3GT3A 3GT0B, 3GT1B, 3GT2B, 3GT3B 6WY0A, 6WY1A, 6WY2A, 6WY3A 6WY4E, 6WY5E, 6WY6E, 6WY7E
Q50	2014-2015	4HH1A, 4HH2A, 4HH3A, 4HH4A, 4HH5A, 4HH6A 4HH1B, 4HH2B, 4HH3B, 4HH4B, 4HH5B, 4HH6B 4HH1C, 4HH2C, 4HH3C, 4HH4C, 4HH5C, 4HH6C 4HH1E, 4HH2E, 4HH3E, 4HH4E, 4HH5E, 4HH6E 4HB1A, 4HB2A, 4HB3A, 4HB4A, 4HB5A, 4HB6A 4HB1B, 4HB2B, 4HB3B, 4HB4B, 4HB5B, 4HB6B 4HB1C, 4HB2C, 4HB3C, 4HB4C, 4HB5C, 4HB6C 4HB1E, 4HB2E, 4HB3E, 4HB4E, 4HB5E, 4HB6E 4GL1A, 4GL2A, 4GL3A, 4GL7A, 4GL8A, 4GL9A 4GA7A, 4GA8A, 4GA9A 4GA7B, 4GA8B, 4GA9B 4GA7C, 4GA8C, 4GA9C 4GA7D, 4GA8D, 4GA9D 4GA7E, 4GA8E, 4GA9E 4GB1A, 4GB2A, 4GB3A 4GB1B, 4GB2B, 4GB3B 4GB1C, 4GB2C, 4GB3C 4GB1D, 4GB2D, 4GB3D 4GB1E, 4GB2E, 4GB3E

7. Follow the on-screen instructions to navigate C-III plus and reprogram the ECM.

NOTE:

- In some cases, more than one new P/N for reprogramming is available.
 - If more than one new P/N is available, the screen in Figure 3 displays.
 - Select and use the reprogramming option that **does not** have the message “Caution! Use ONLY with ITBXX-XXX”.
- If you get this screen and it is blank (no reprogramming listed), it means there is no reprogramming available for this vehicle. Close C-III plus and refer back to ASIST for further diagnosis.

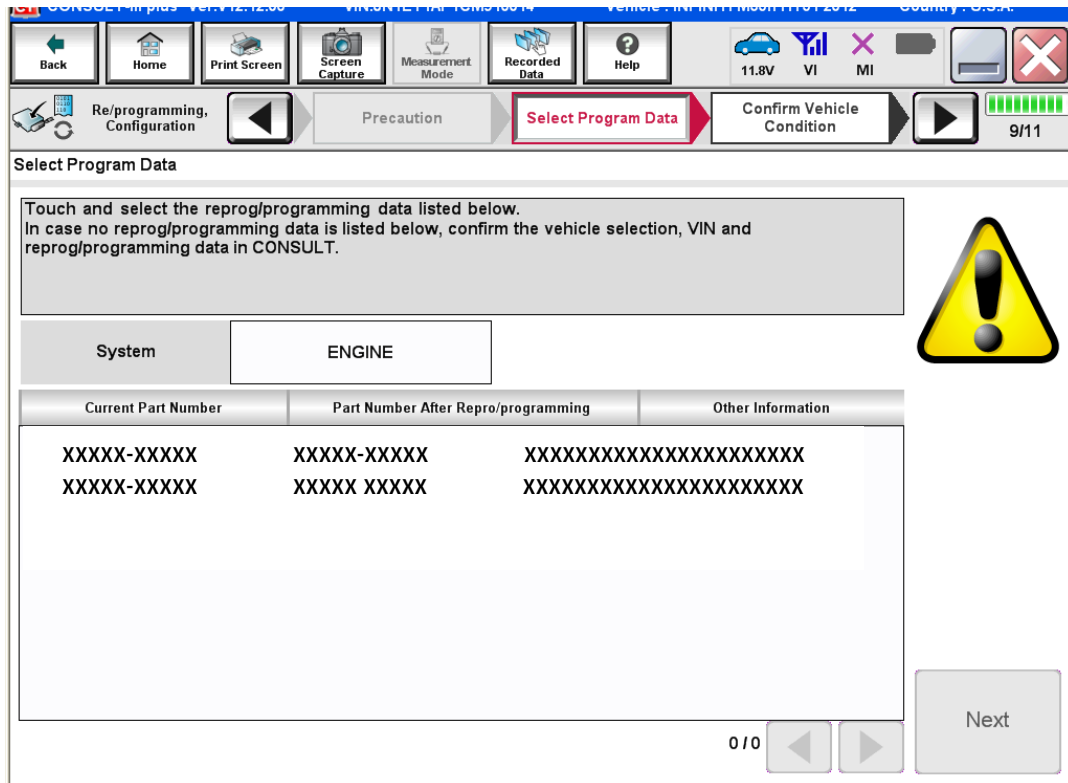


Figure 3

8. When the screen in Figure 4 displays, reprogramming is complete.

NOTE: If the screen in Figure 4 does not display (reprogramming does not complete), refer to ECM recovery on the next page.

9. Disconnect the GR8 (battery charger) from the vehicle.

10. Select **Next**.

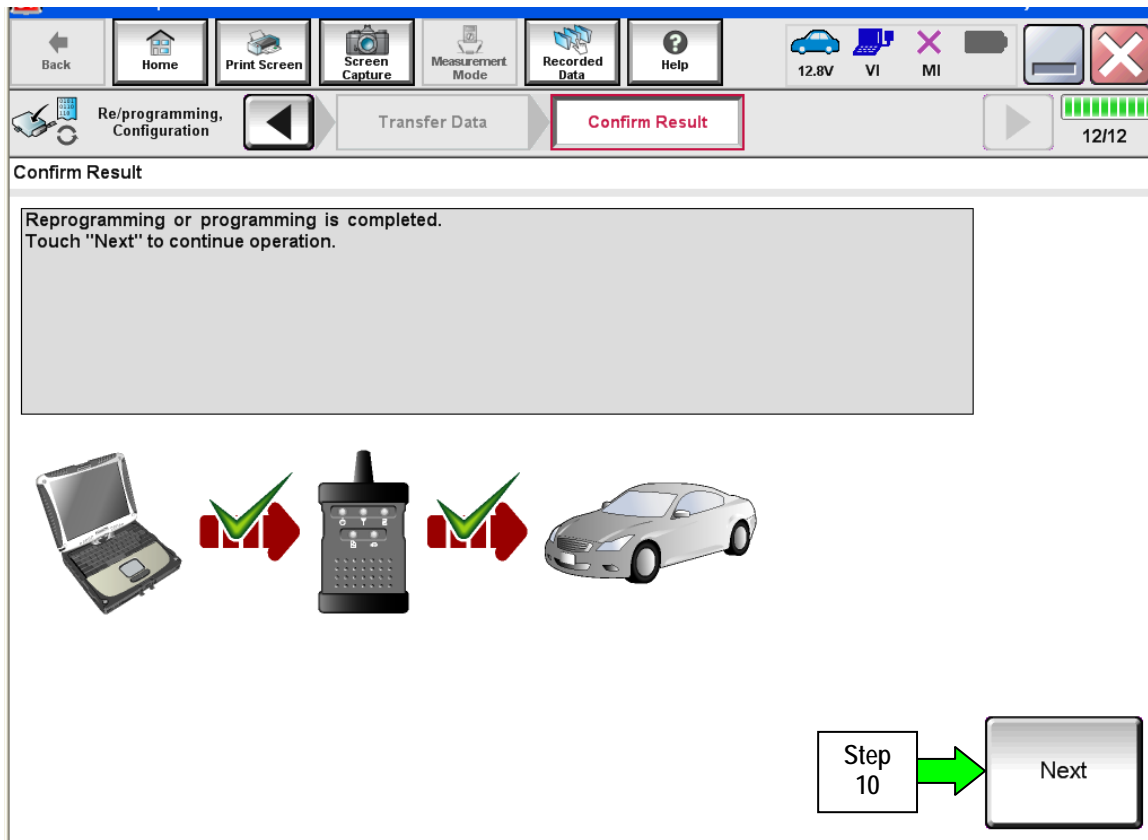


Figure 4

NOTE:

- In the next steps, starting on page 10, you will perform Throttle Valve Closed Position, Idle Air Volume Learn, Accelerator Closed Position, and DTC erase.
- These operations are required before C-III plus will provide the final reprogramming confirmation report.

ECM recovery:

Do not disconnect plus VI or shut down Consult III plus if reprogramming does not complete.

If reprogramming does not complete and the “!?” icon displays as shown in Figure 5:

- Check battery voltage (12.0 - 15.5 V).
- Ignition is ON, engine OFF.
- External Bluetooth® devices are OFF.
- All electrical loads are OFF.
- Select retry and follow the on screen instructions.
- “Retry” may not go through on first attempt and can be selected more than once.

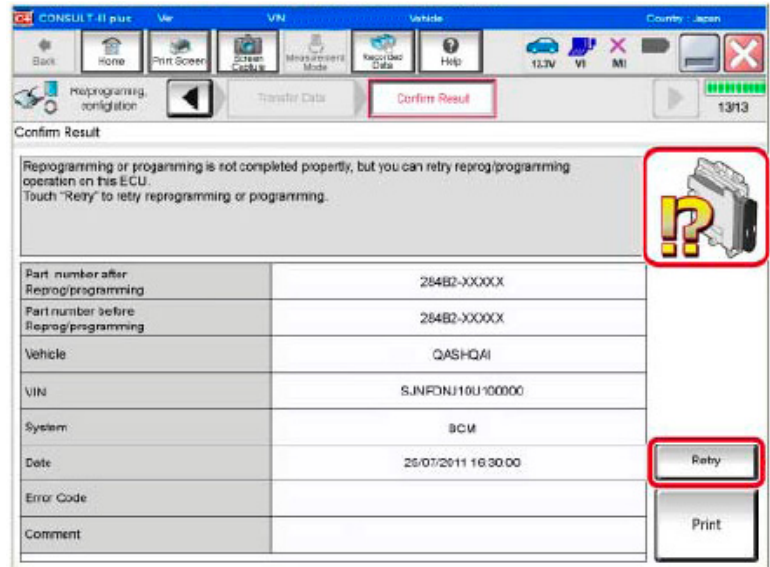


Figure 5

If reprogramming does not complete and the “X” icon displays as shown in Figure 6:

- Check battery voltage (12.0 - 15.5 V).
- CONSULT A/C adapter is plugged in.
- Ignition is ON, engine OFF.
- Transmission is in Park.
- All C-III plus / VI cables are securely connected.
- All C-III plus updates are installed.
- Select Home, and restart the reprogram procedure from the beginning.

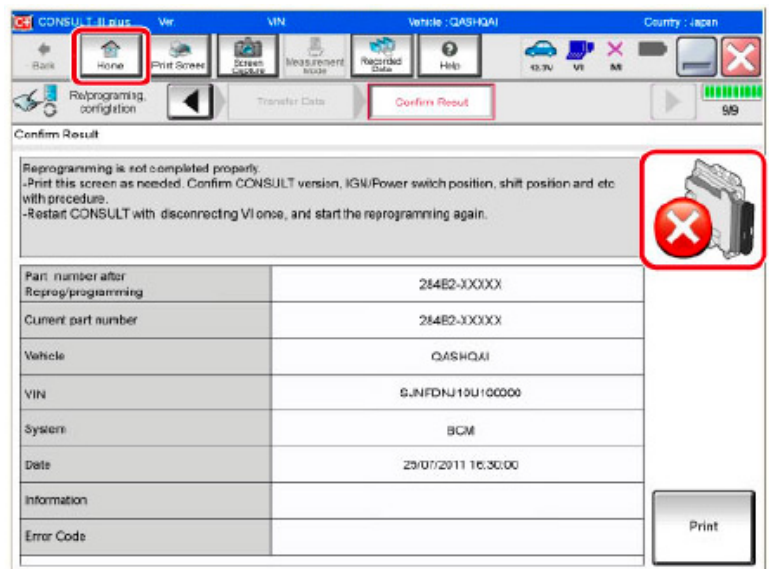


Figure 6

11. Follow the on-screen instructions to perform the following:

- **Throttle Valve Closed Position**
- **Idle Air Volume Learn (IAVL)**

NOTE:

- Listed below are common conditions required for IAVL to complete.
 - If IAVL does not complete within a few minutes, a condition may be out of range.
 - Refer to the appropriate Electronic Service Manual (ESM) for specific conditions required for the vehicle you are working on.
 - Engine coolant temperature: 70 -105° C (158 - 221°F)
 - Battery voltage: More than 12.9V (At idle)
 - Selector lever: P or N
 - Electric load switch: OFF (Air conditioner, headlamp, rear window defogger)
 - Steering wheel: Neutral (Straight-ahead position)
 - Vehicle speed: Stopped
 - Transmission: Warmed up
-
- **Accelerator Pedal Close Position Learning**
 - **Erase DTCs**

Continue to the next page.

12. When the entire reprogramming process is complete, the screen in Figure 7 will display.
13. Verify the before and after part numbers are different.
14. Print a copy of this screen (Figure 7) and attach it to the repair order for warranty documentation.
15. Select **Confirm**.

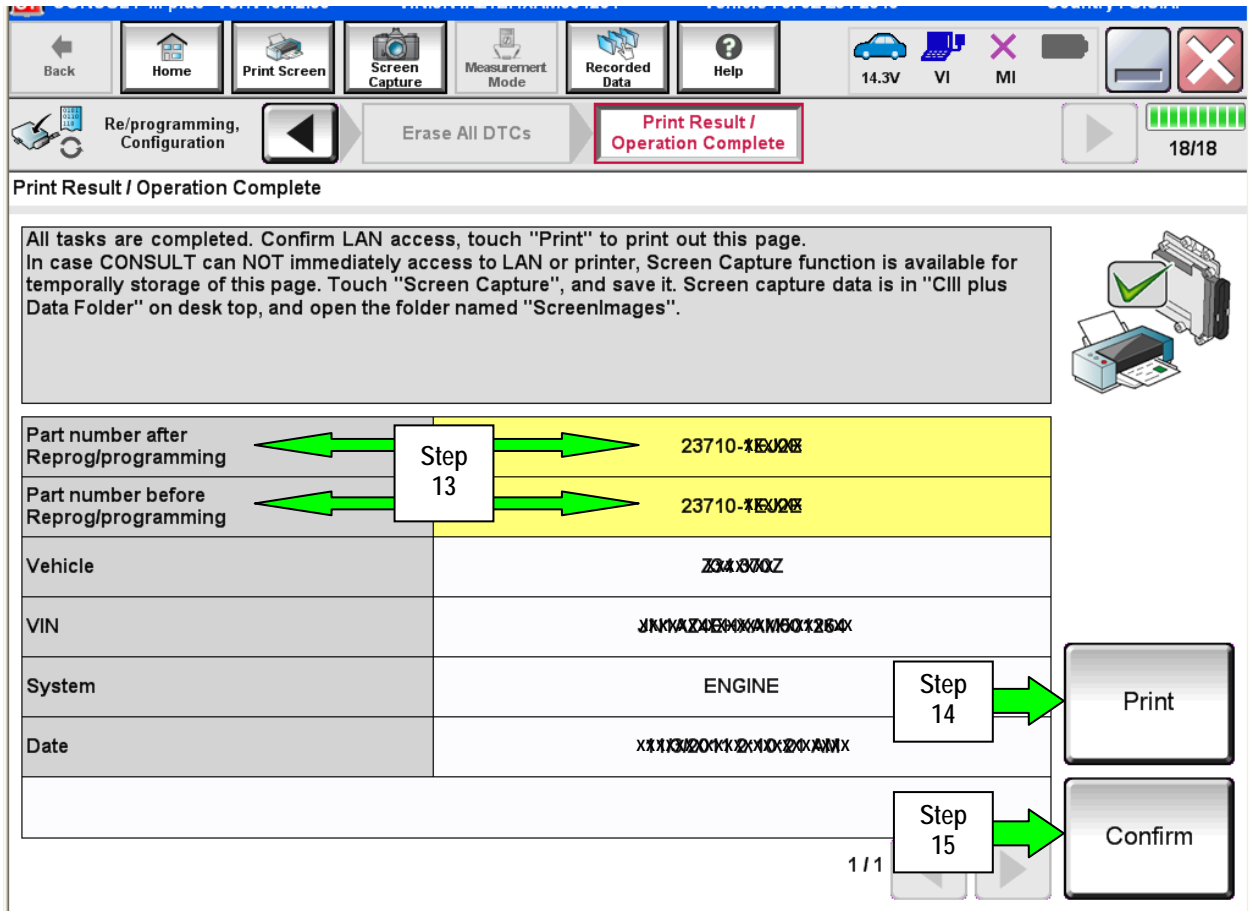


Figure 7

16. Close C-III plus.
17. Turn the ignition OFF.
18. Disconnect the plus VI from the vehicle.
19. Test drive the vehicle and make sure it operates correctly and the MIL is OFF.
 - If the MIL comes ON, go back to ASIST for further diagnostic information.
 - Diagnosis and repairs beyond ECM reprogramming are not covered by this bulletin.

CLAIMS INFORMATION

Submit a Primary Part (PP) type line claim using the following claims coding:

DESCRIPTION	PFP	OP CODE	SYM	DIA	FRT
Reprogram Engine Control Module	(1)	DE97AA	ZE	32	(2) (3)

- (1) Refer to the electronic parts catalog (FAST or equivalent) and use the ECM assembly part number as the Primary Failed Part (PFP).
- (2) Reference the current Infiniti Warranty Flat Rate Manual and use the indicated FRT.
- (3) FRT allows adequate time to access DTC codes and reprogram ECM. No other diagnostic procedures subsequently required. Do NOT claim any Diagnostic Op Codes with this claim.

