



SERVICE BULLETIN

Classification: BR14-007c	Reference: NTB14-115c	Date: July 21, 2015
------------------------------	--------------------------	------------------------

ABS CONTROL UNIT CONFIGURATION / DTC C1170

This bulletin has been amended in the SERVICE PROCEDURE. A part number chart was removed. Please discard all previous versions of this bulletin.

APPLIED VEHICLES: 2013 - 2015 Altima (L33) with QR25 (4 cylinder) engine only
2015 Murano (Z52)
2014 - 2015 Rogue (T32)

NOTE: Does not apply to 2014 or 2015 Rogue Select (S35)

SERVICE INFORMATION

For the Applied Vehicles above, when an ABS Actuator and Electric Unit (ABS control unit) is replaced for any reason, Configuration of the ABS Control Unit must be performed.

If Configuration is not performed, DTC C1170 (VARIANT CODING) will be stored.

The Service Procedure in this bulletin contains the steps for performing ABS Control Unit Manual Configuration.

Nissan Bulletins are intended for use by qualified technicians, not 'do-it-yourselfers'. Qualified technicians are properly trained individuals who have the equipment, tools, safety instruction, and know-how to do a job properly and safely. **NOTE:** If you believe that a described condition may apply to a particular vehicle, DO NOT assume that it does. See your Nissan dealer to determine if this applies to your vehicle.

SERVICE PROCEDURE

NOTE:

Before removal of the old/current ABS control unit, use CONSULT-III plus (C-III plus) to read the ABS Control Unit “Type ID”.

If you are unable to access the old/current ABS control unit with C-III plus, replace it and then skip to Configuration of the New ABS Control Unit on page 5.

Read “Type ID”

1. Connect C-III plus to the vehicle.
2. Turn the ignition ON.
3. Open / start C-III plus.
4. Wait for the plus VI to be recognized.
 - The serial number will display when the plus VI is recognized.
5. Select **Diagnosis (One System)**.

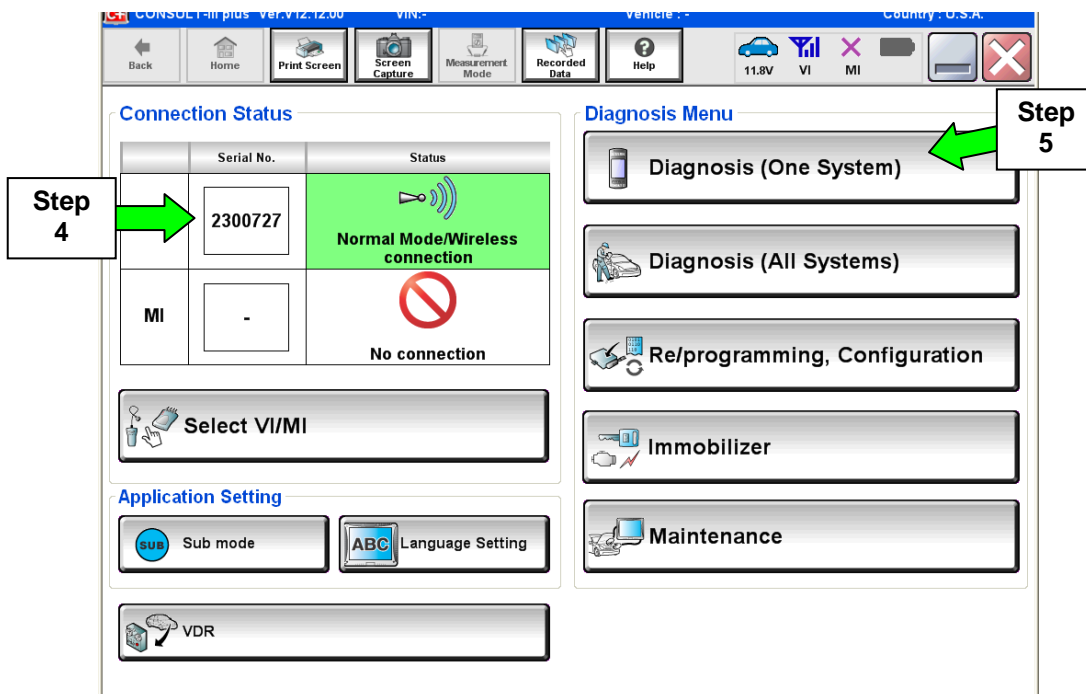


Figure 1

6. Select **ABS**.

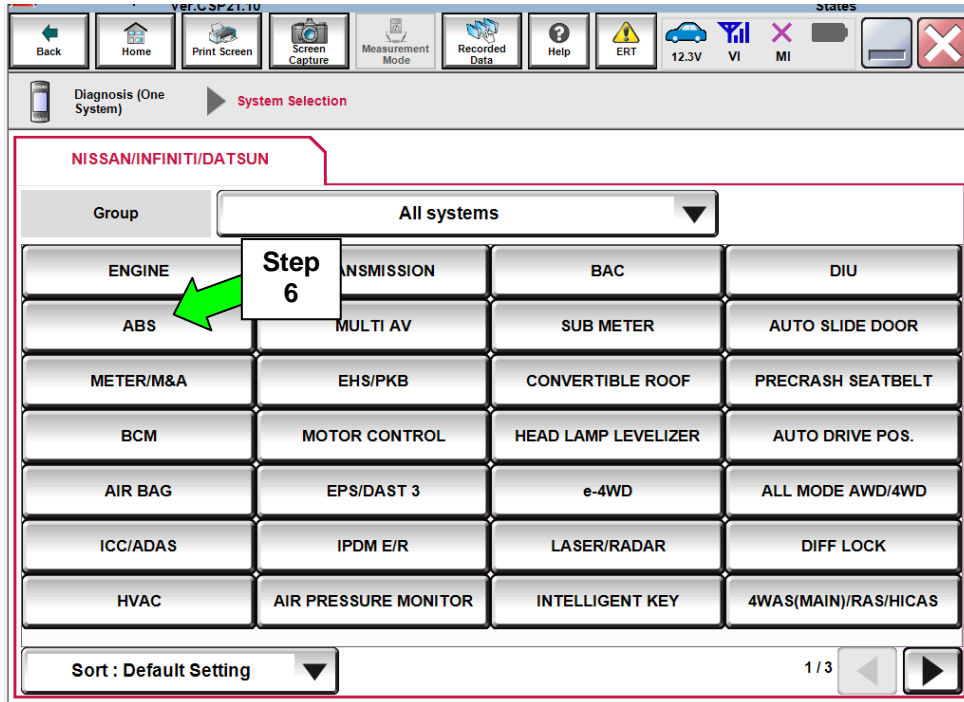


Figure 2

7. Select **ECU Identification**.

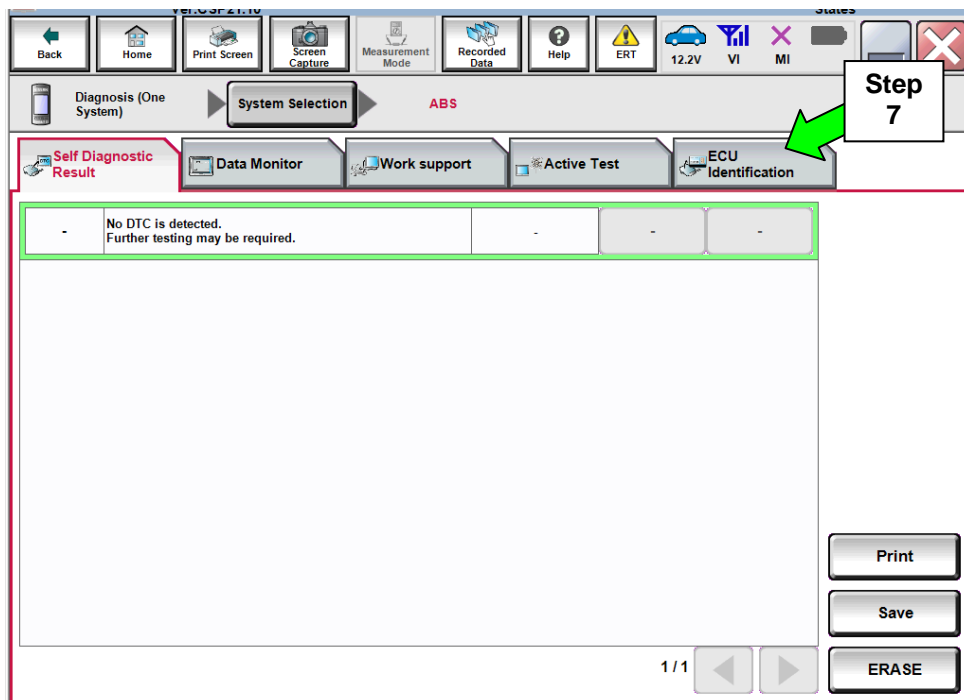


Figure 3

8. Write down the **ECU PART NUMBER** – this is the ABS control unit “Type ID”:

NOTE: This number will be used later for ABS control unit Manual Configuration.

9. Select **Home**.

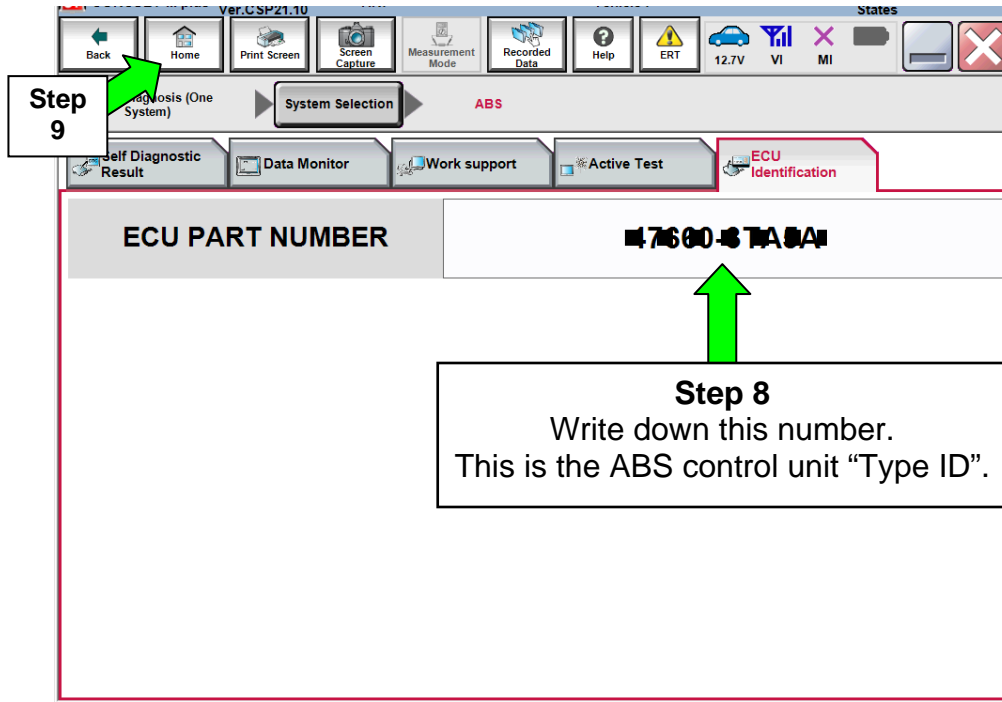


Figure 4

10. Replace the ABS control unit.

- Refer to the appropriate Electronic Service Manual (ESM) for ABS control unit replacement information.

11. Go to **Configuration of the New ABS Control Unit** on the next page.

Configuration of the New ABS Control Unit

1. Connect C-III plus to the vehicle.
2. Turn the ignition ON.
3. Open / start C-III plus.
4. Wait for the plus VI to be recognized.
 - The serial number will display when the plus VI is recognized.
5. Select **Re/programming, Configuration**.

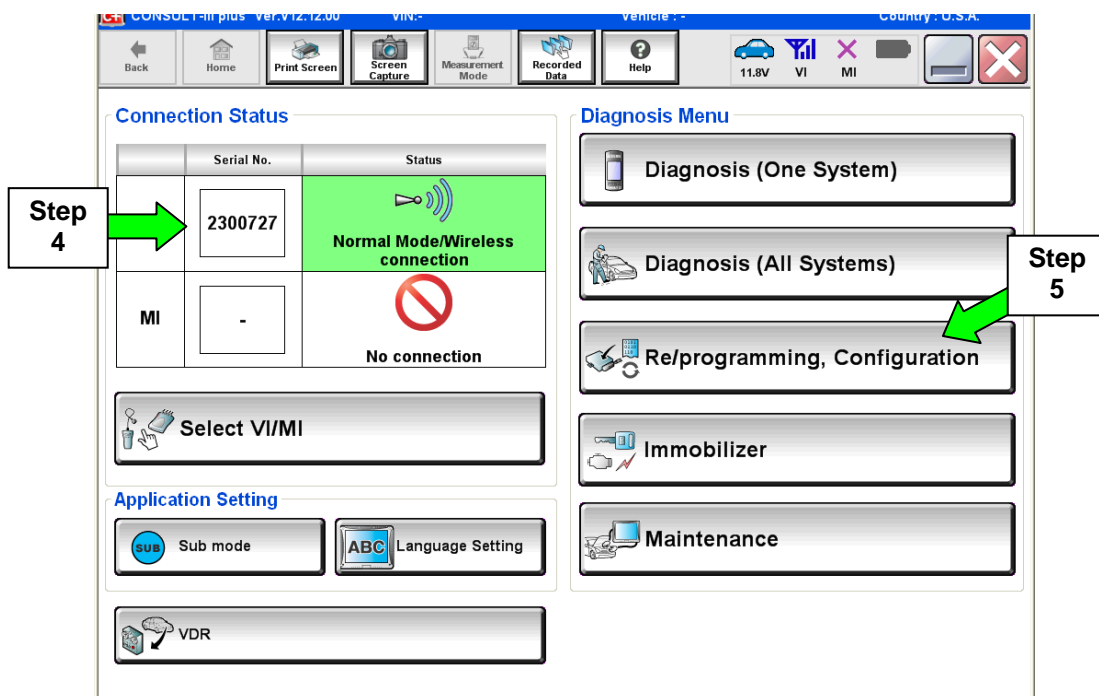


Figure C1

6. Use arrows (if needed) to view and read all precautions.
7. Check the box confirming the precautions have been read.
8. Select **Next**.

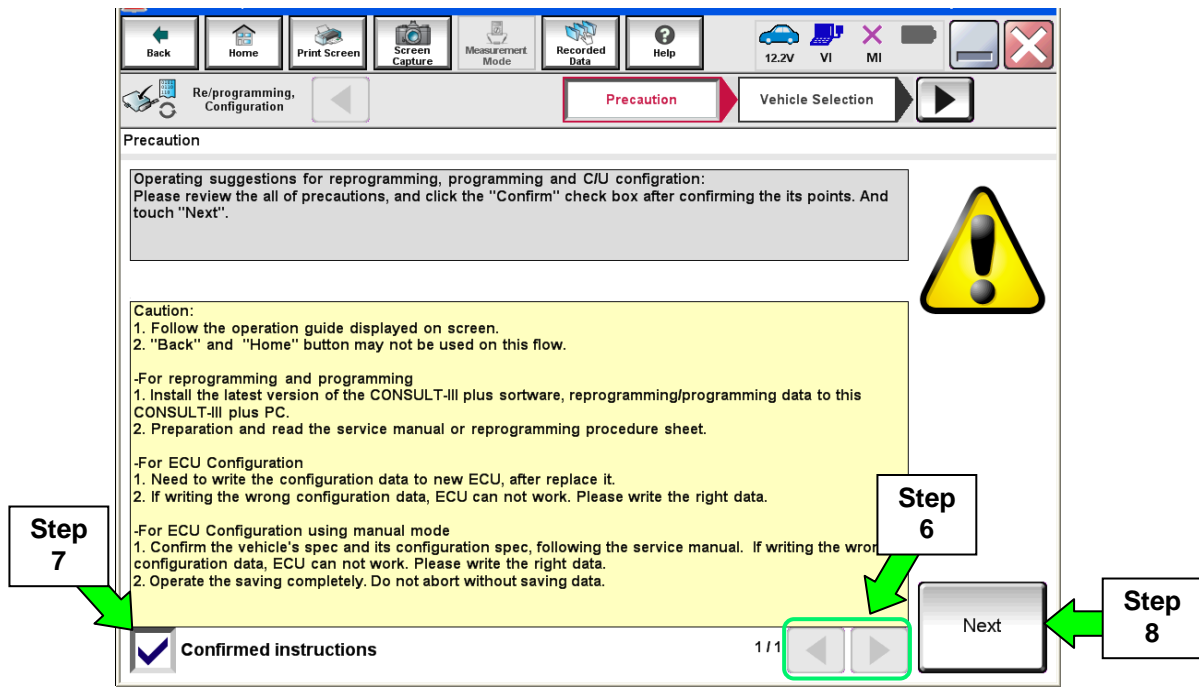


Figure C2

9. If the screen in Figure C3 displays, select **Automatic Selection(VIN)**.
 - If the screen in Figure C3 does not display, skip to step 10.

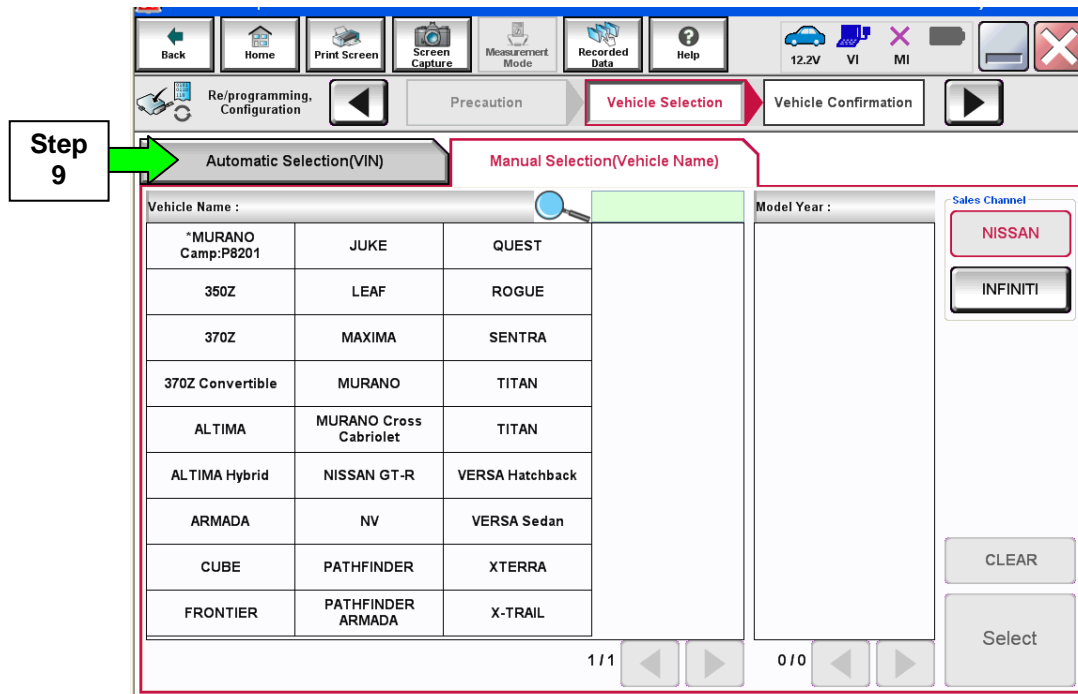


Figure C3

10. Make sure **VIN or Chassis #** matches the vehicle's VIN.

11. Select **Confirm**.

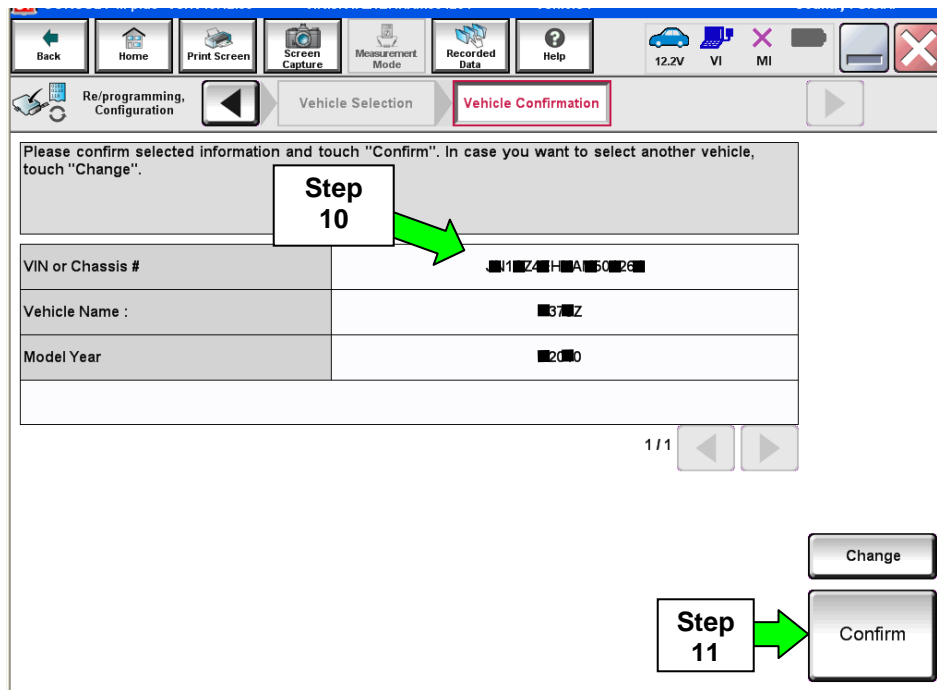


Figure C4

12. Select **Confirm**.

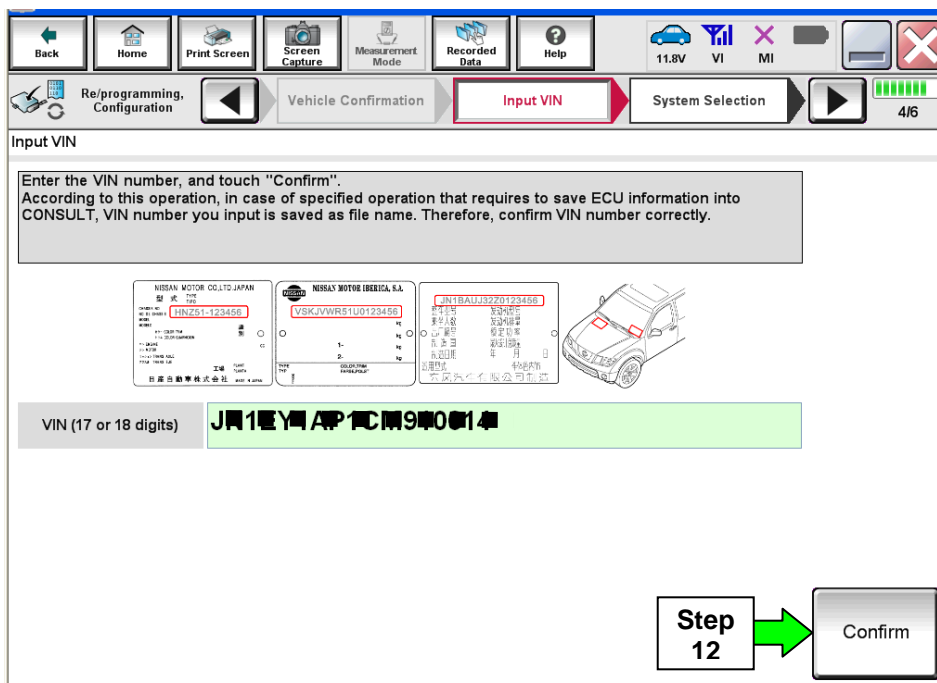


Figure C5

13. Select **ABS**.

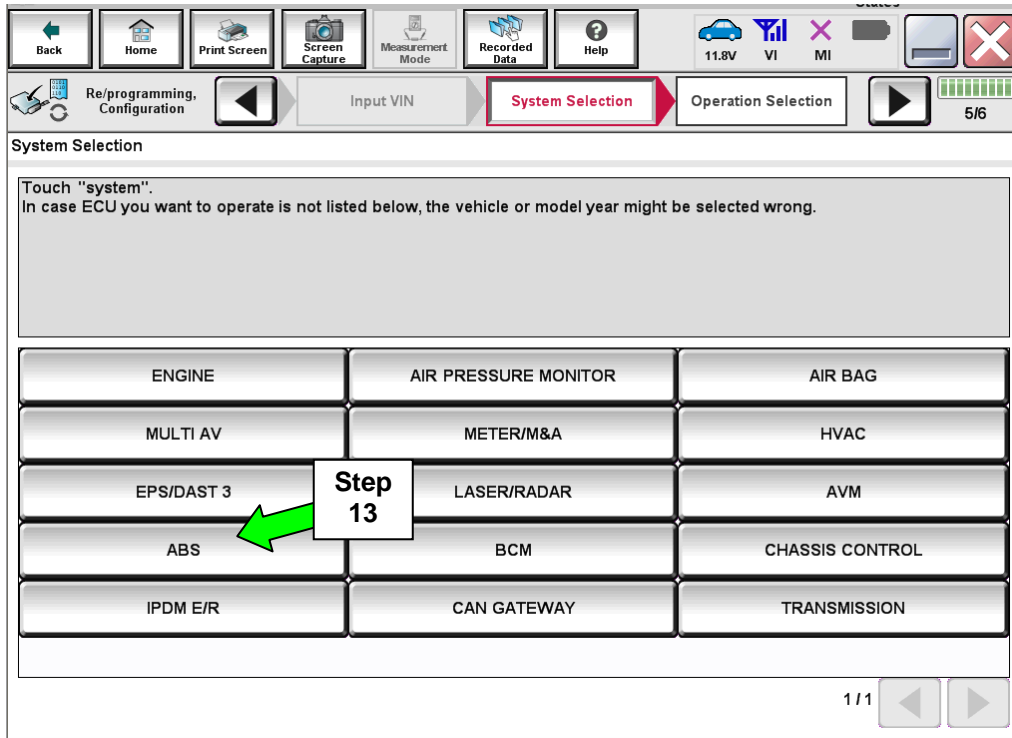


Figure C6

14. Select **Manual Configuration**.

- **DO NOT** select Reprogramming.

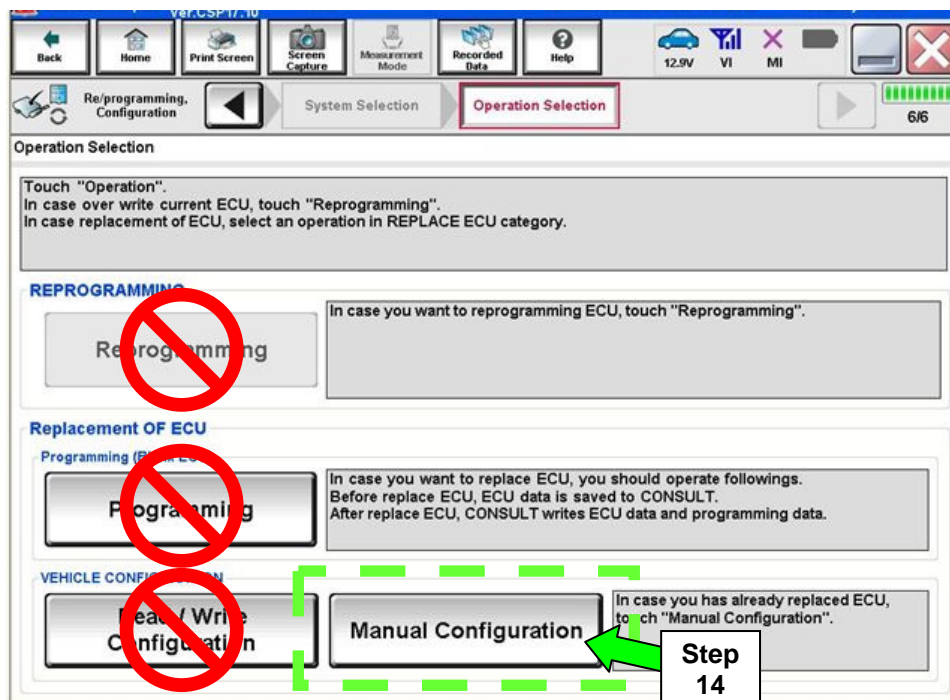


Figure C7

15. Select the correct **Type ID** number.

- If needed, use scroll arrows to find the correct number.
- Use the number you wrote down in step 8 on page 4.
or
- Refer to FAST or equivalent electronic parts catalog (see Figure C9 below).
 - Use the VIN to look up the **TYPE-ID, ID NO FOR VDC CONFIGURATION**.

16. Select **Next**.

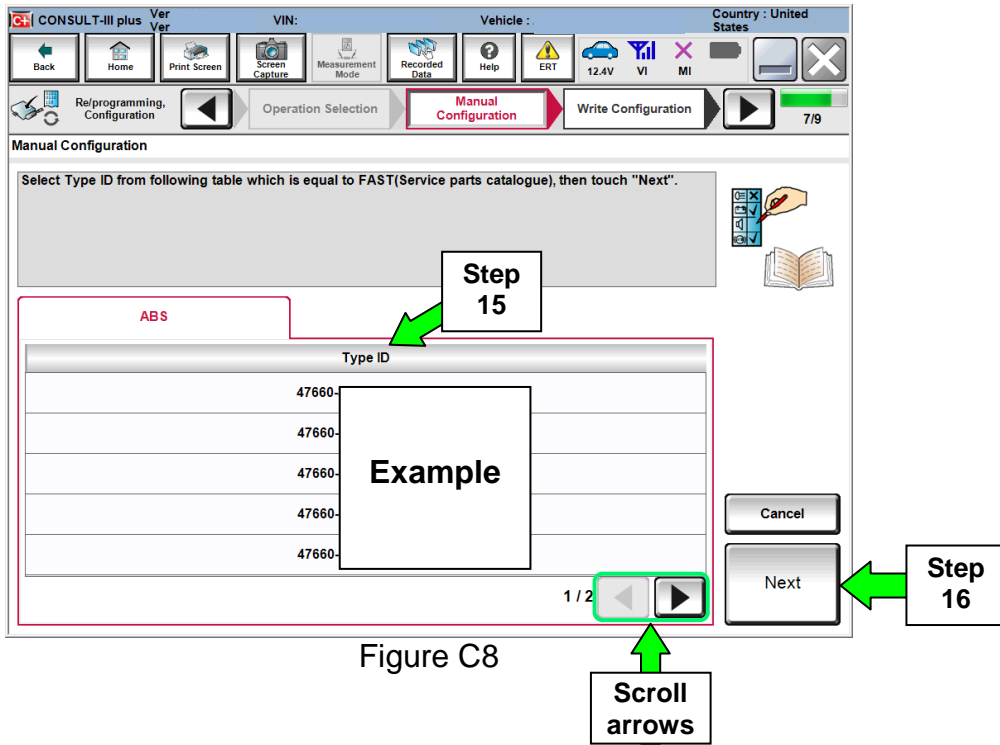


Figure C8

EXAMPLE (when using electronic parts catalog to obtain **Type ID** number)

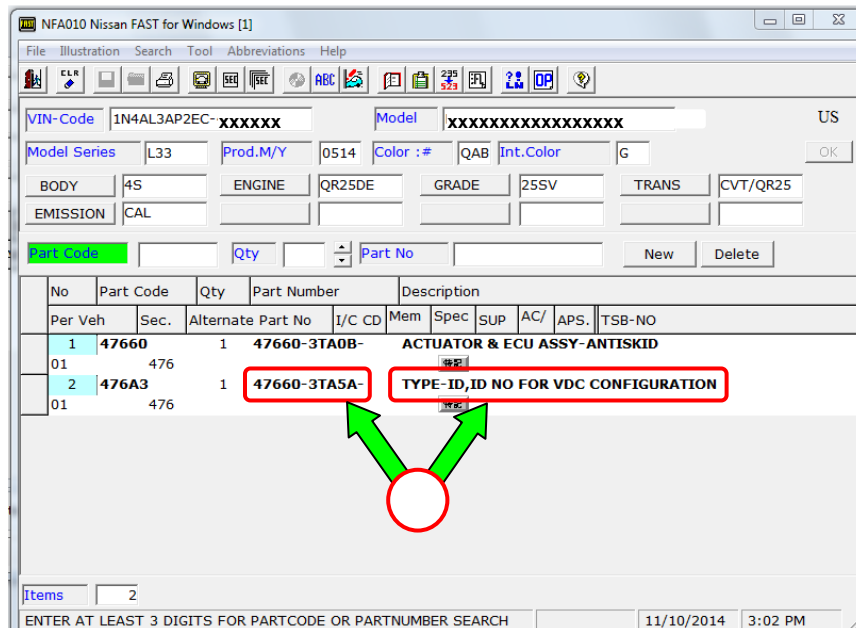


Figure C9

17. Confirm the correct **Type ID** number is selected.

18. Select **OK**.

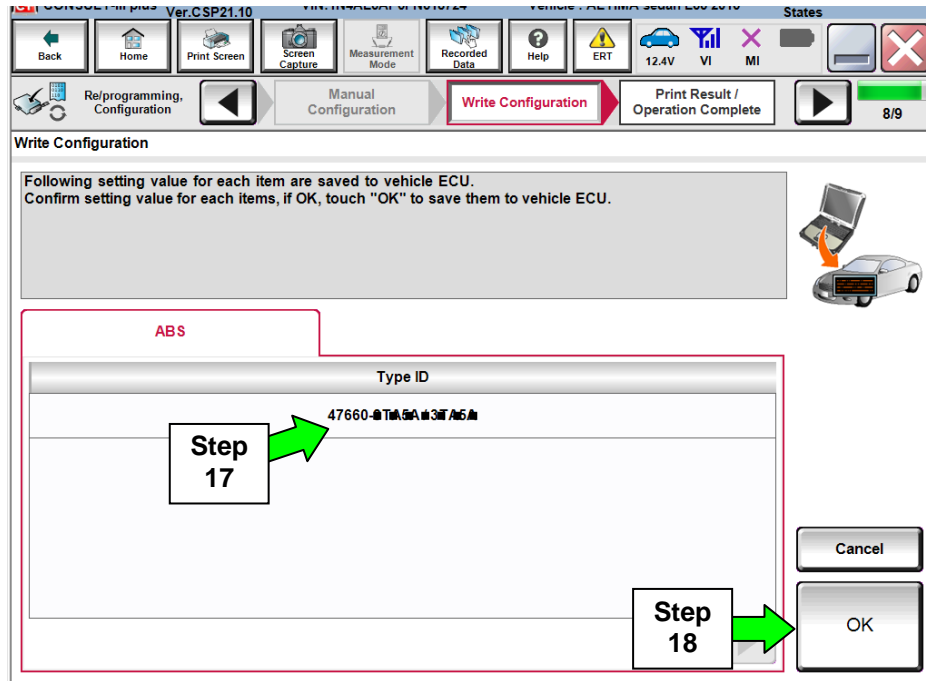


Figure C10

19. Configuration is complete, select **End**.

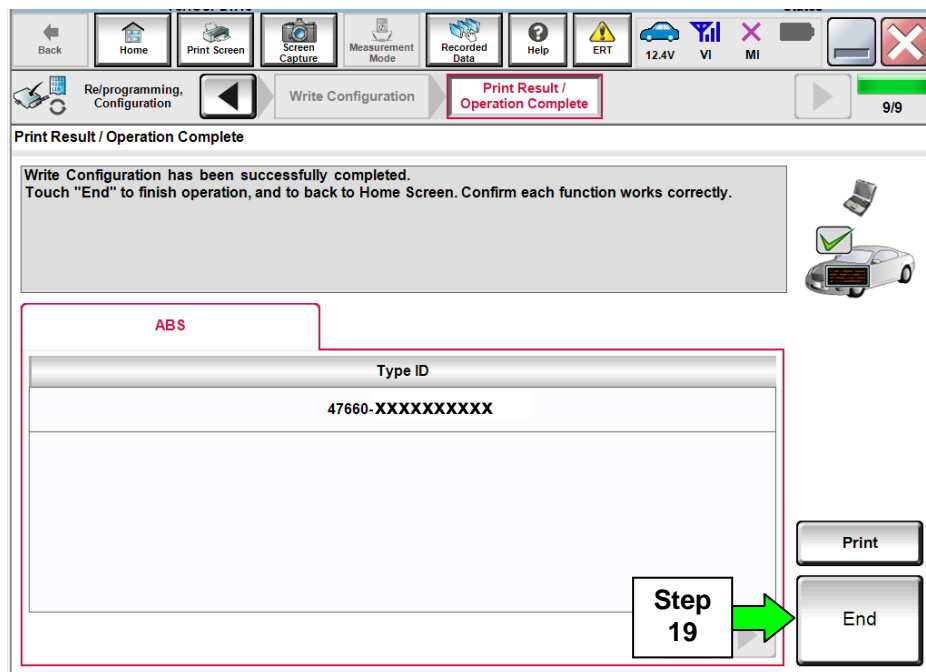


Figure C11