



SERVICE BULLETIN

Classification: EC14-002c	Reference: NTB14-009c	Date: June 17, 2015
------------------------------	--------------------------	------------------------

2014 VERSA NOTE; MIL ON WITH DTC P059F STORED

APPLIED VEHICLES, ACTION, CLAIMS INFORMATION, and the SERVICE PROCEDURE have been amended. A FLOWCHART has been added. Please discard all previous versions of this bulletin.

APPLIED VEHICLE: 2014 Versa NOTE (E12)

APPLIED VIN / DATE: Vehicles built before 3N1CE2CP(*)EL 433025 and April 7, 2014

IF YOU CONFIRM:

The MIL is ON with DTC P059F (ACTIVE GRILLE AIR SHUTTER A) stored in the ECM.

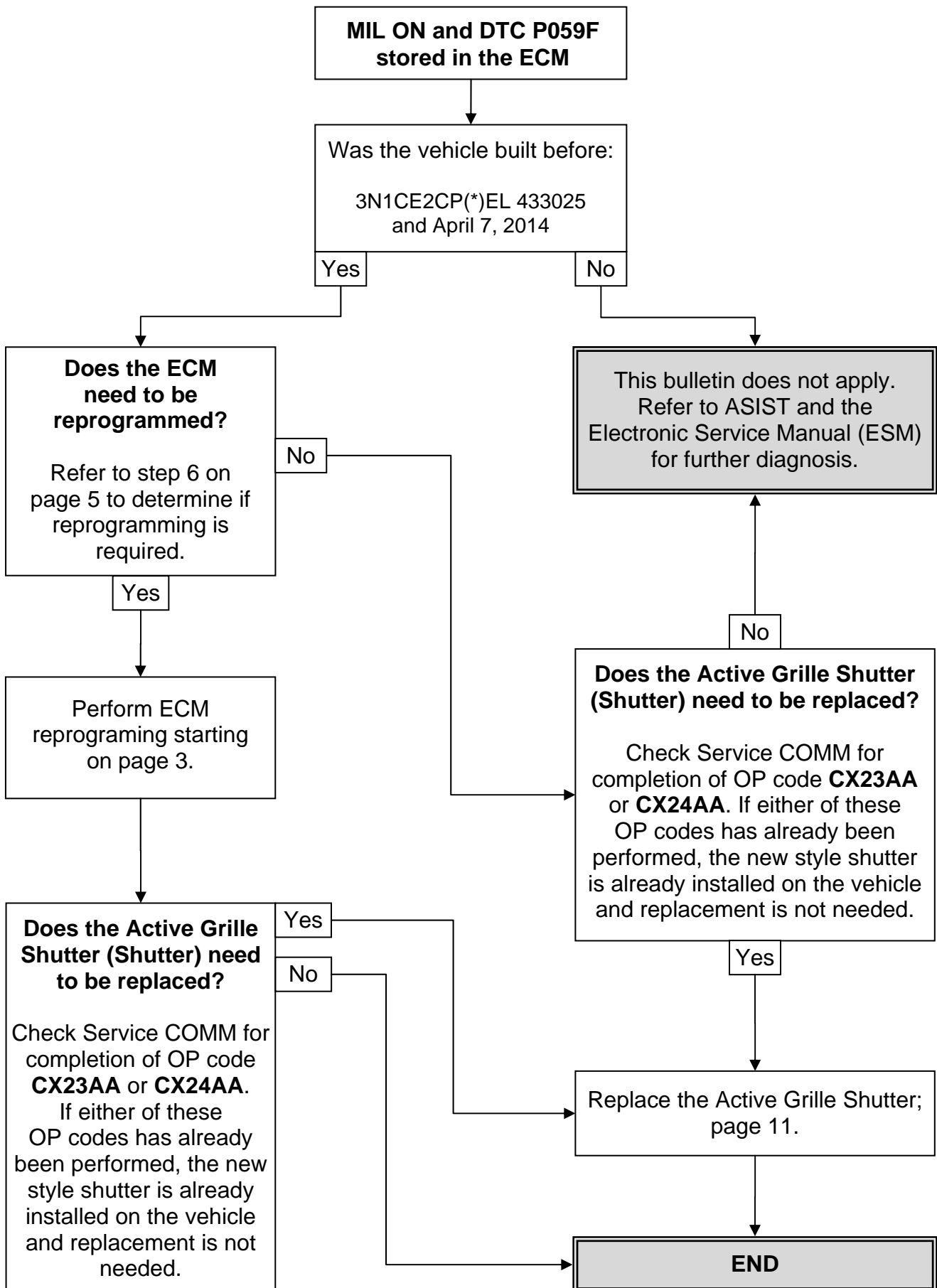
ACTION:

Go to the **FLOWCHART** on the next page.

IMPORTANT: The purpose of **ACTION** (above) is to give you a quick idea of the work you will be performing. You **MUST** closely follow the entire **SERVICE PROCEDURE** as it contains information that is essential to successfully completing this repair.

Nissan Bulletins are intended for use by qualified technicians, not 'do-it-yourselfers'. Qualified technicians are properly trained individuals who have the equipment, tools, safety instruction, and know-how to do a job properly and safely. **NOTE:** If you believe that a described condition may apply to a particular vehicle, **DO NOT** assume that it does. See your Nissan dealer to determine if this applies to your vehicle.

FLOWCHART



SERVICE PROCEDURE

ECM Part Number Check / Reprogramming

NOTE:

- Most instructions for reprogramming with CONSULT-III plus (C-III plus) are displayed on the CONSULT PC screen.
- If you are not familiar with the reprogramming procedure, *click here*. This will link you to the "CONSULT-III plus (C-III plus) Reprogramming" general procedure.
- Take the vehicle for a 10 minute drive in order to meet the following Idle Air Volume Learn (IAVL) conditions:
 - Engine coolant temperature: 70 -100°C (158 -212°F)
 - Battery voltage: More than 12.9V (At idle)
 - Transmission: Warmed up



Figure A

- After reprogramming is complete, you will be required to perform Throttle Valve Closed Position, Idle Air Volume Learn, Accelerator Closed Position, and DTC erase.

CAUTION:

- Connect the GR8 to the vehicle 12 volt battery and set to ECM power supply mode. If the vehicle battery voltage drops below 12.0V or rises above 13.5V during reprogramming, the ECM may be damaged.
- Be sure to turn OFF all vehicle electrical loads. If a vehicle electrical load remains ON, the ECM may be damaged.
- Be sure to connect the AC Adapter. If the CONSULT PC battery voltage drops during reprogramming, the process will be interrupted and the ECM may be damaged.
- Turn off all external Bluetooth® devices (e.g., cell phones, printers, etc.) within range of the CONSULT PC and the VI. If Bluetooth® signal waves are within range of the CONSULT PC during reprogramming, reprogramming may be interrupted and the ECM may be damaged.

1. Connect the CONSULT PC to the vehicle to begin the reprogramming procedure.
2. Open C-III plus.
3. Wait for the plus VI to be recognized.
 - Serial number will display when the plus VI is recognized.
4. Select **Re/programming, Configuration**.

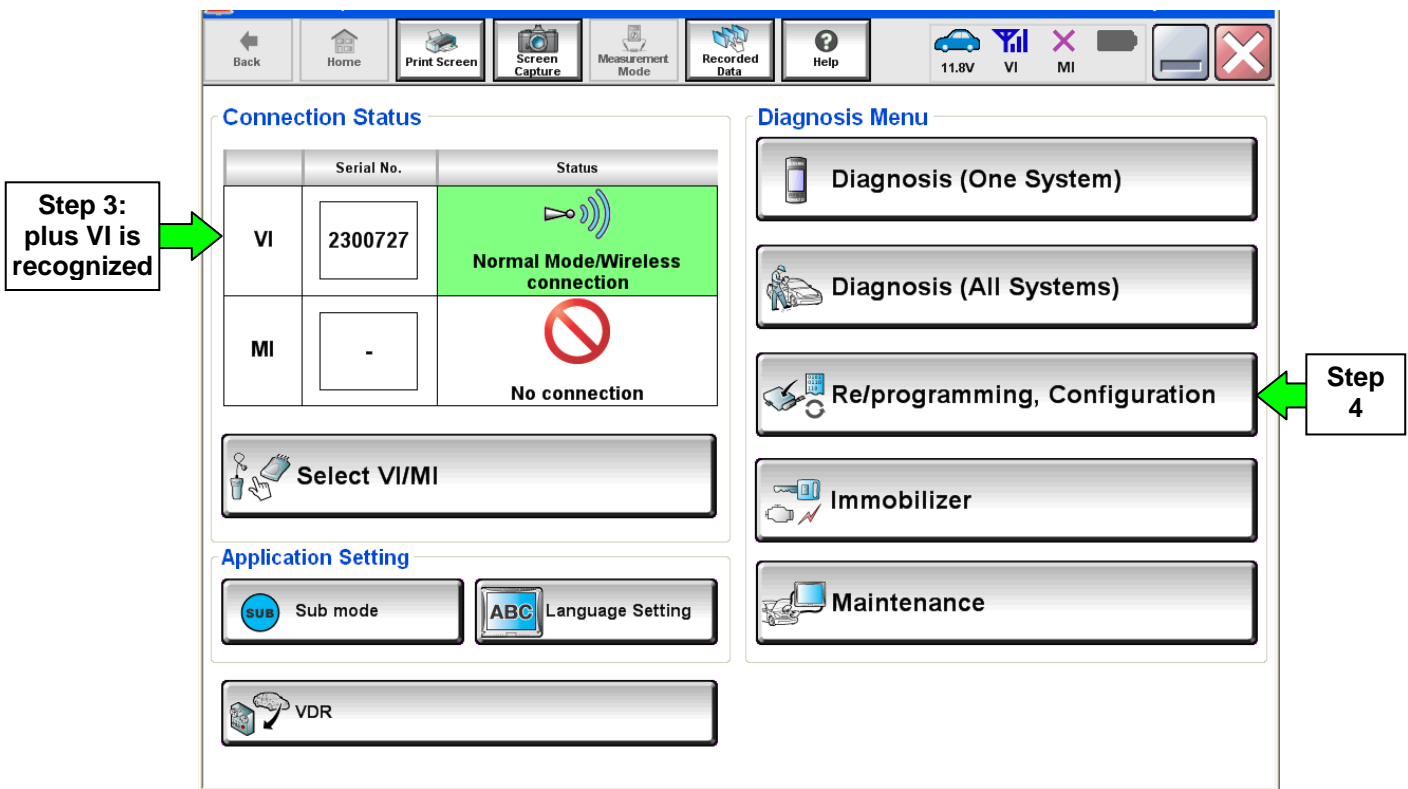


Figure 1

5. Follow the on-screen instructions and navigate C-III plus to the screen shown in Figure 2 on the next page.

6. When you get to the screen shown in Figure 2, confirm this bulletin applies as follows.
- A. Find the ECM **Part Number** and write it on the repair order.

NOTE: This is the current ECM Part Number (P/N).

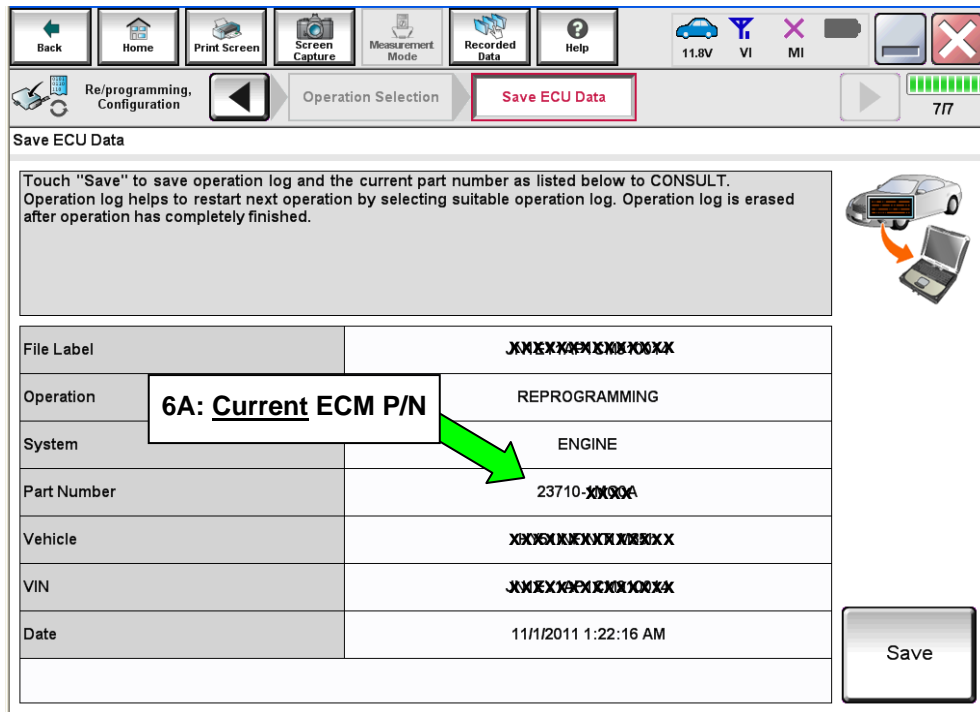


Figure 2

- B. Compare the P/N you wrote down to the numbers in the **Current ECM Part Number** column in **Table A** below.
- If there is a match, the ECM needs to be reprogrammed. Continue with the reprogramming procedure.
 - If there is not a match, ECM reprogramming does not apply. Go to **Active Grille Shutter Replacement** on page 11.

Table A

CURRENT ECM PART NUMBER: 23710-
3VB5B, 3VB5C, 3VB5D, 3VB5E

7. Follow the on-screen instructions to navigate C-III plus and reprogram the ECM.

NOTE:

- In some cases, more than one new P/N for reprogramming is available.
- In this case, the screen in Figure 3 displays.
- Select and use the reprogramming option that **does not** have the message “Caution! Use ONLY with NTBXX-XXX”.
- If you get this screen and it is blank (no reprogramming listed), it means there is no reprogramming available for this vehicle. Close C-III plus and refer back to ASIST for further diagnosis.

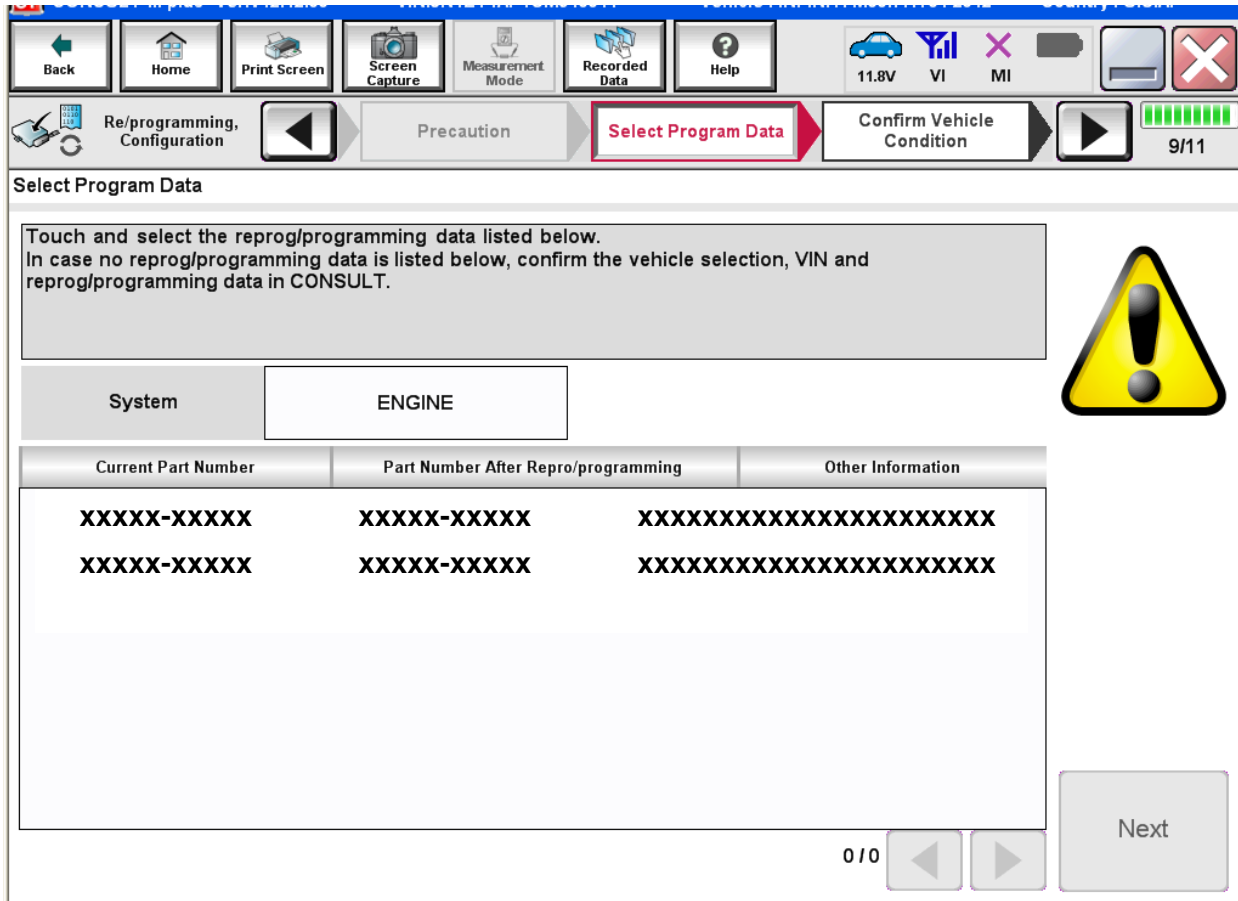


Figure 3

8. When the screen in Figure 4 displays, reprogramming is complete.

NOTE: If the screen in Figure 4 does not display (reprogramming does not complete), refer to the information on the next page.

9. Disconnect the battery charger from the vehicle.

10. Select **Next**.

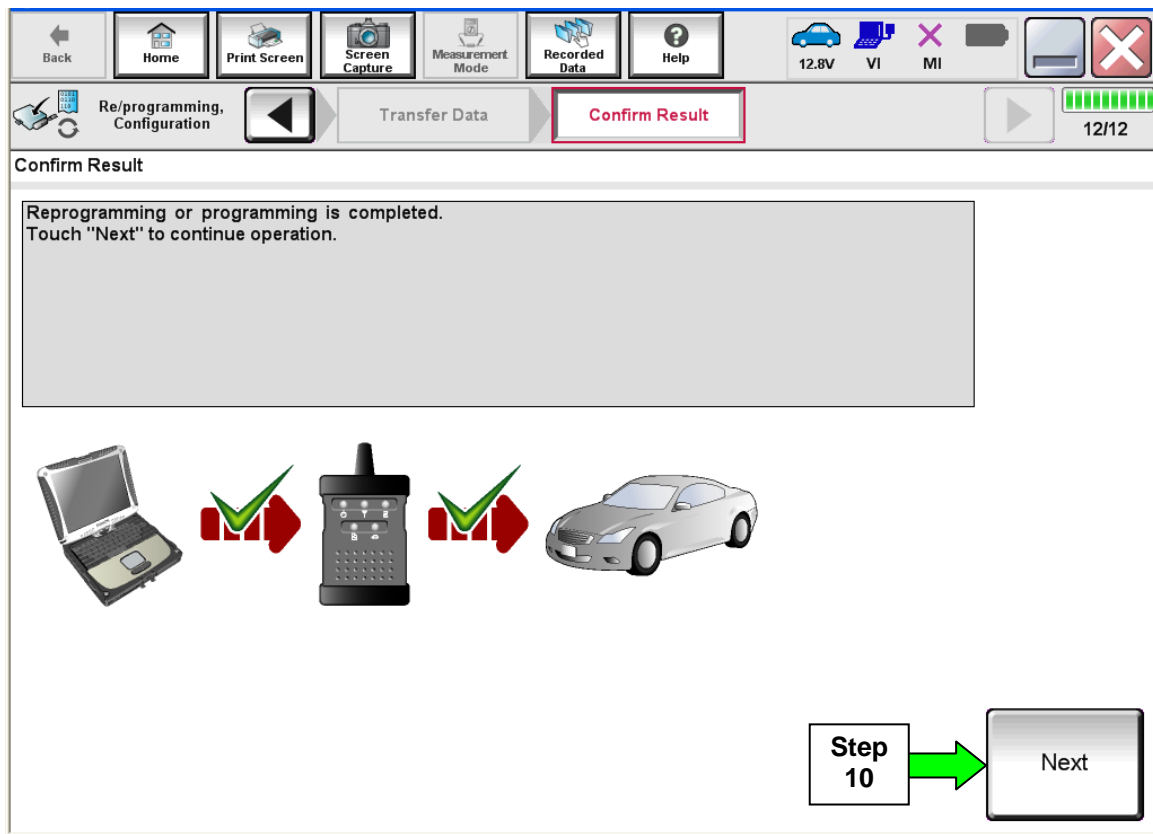


Figure 4

NOTE:

- In the next steps (page 9), you will perform Throttle Valve Closed Position, Idle Air Volume Learn, Accelerator Closed Position, and DTC erase.
- These operations are required before C-III plus will provide the final reprogramming confirmation report.

ECM Recovery

Do not disconnect plus VI or shut down C-III plus if reprogramming does not complete.

If reprogramming does not complete and the “!?” icon displays as shown in Figure 5:

- Check battery voltage (12.0–15.5 V).
- Ignition is ON, engine OFF.
- External Bluetooth® devices are OFF.
- All electrical loads are OFF.
- **Select retry and follow the on screen instructions.**
- “Retry” may not go through on first attempt and can be selected more than once.

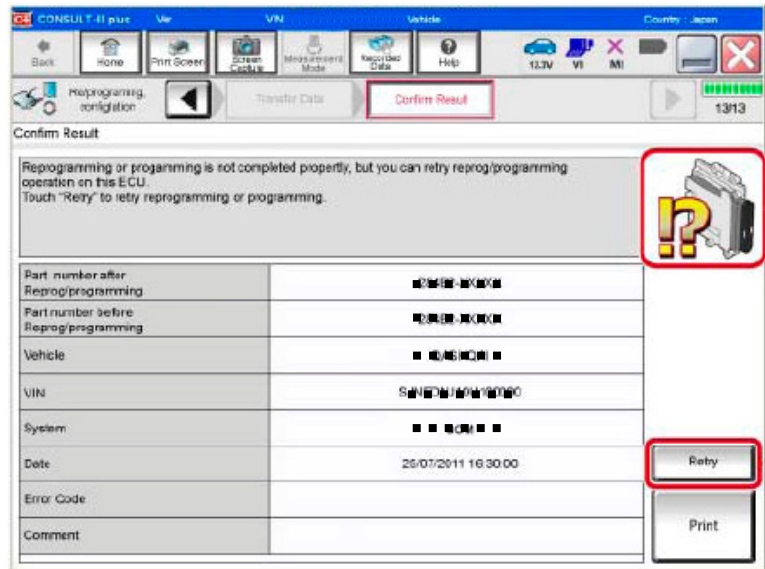


Figure 5

If reprogramming does not complete and the “X” icon displays as shown in Figure 6:

- Check battery voltage (12.0–15.5 V).
- CONSULT A/C adapter is plugged in.
- Ignition is ON, engine OFF.
- Transmission is in Park.
- All C-III plus / VI cables are securely connected.
- All C-III plus updates are installed.
- **Select Home, and restart the reprogram procedure from the beginning.**

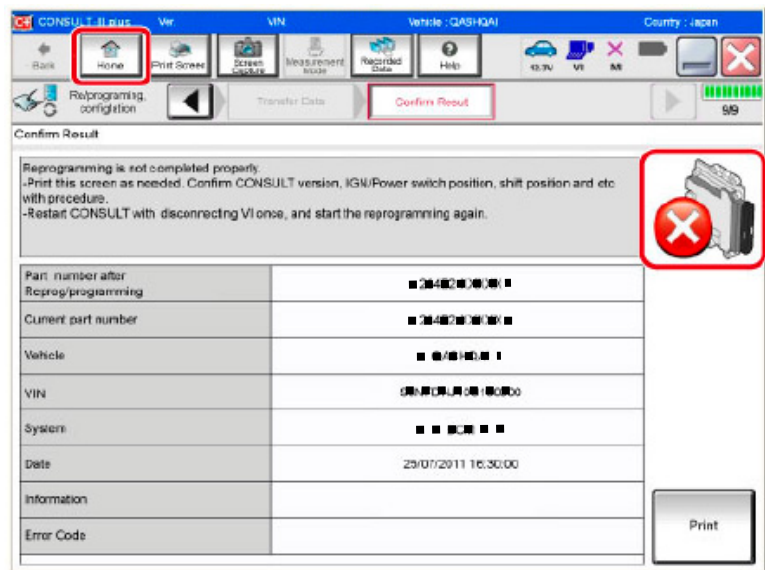


Figure 6

11. Follow the on-screen instructions to perform the following:

- **Throttle Valve Closed Position**
- **Idle Air Volume Learn (IAVL)**

NOTE:

- **Listed below are common conditions required for IAVL to complete.**
 - **If IAVL does not complete within a few minutes, a condition may be out of range.**
 - **Refer to the appropriate Electronic Service Manual (ESM) for specific conditions required for the vehicle you are working on.**
 - Engine coolant temperature: 70 -100° C (158 -212°F)
 - Battery voltage: More than 12.9V (At idle)
 - Selector lever: P or N
 - Electric load switch: OFF (Air conditioner, headlamp, rear window defogger)
 - Steering wheel: Neutral (Straight-ahead position)
 - Vehicle speed: Stopped
 - Transmission: Warmed up
-
- **Accelerator Pedal Close Position Learning**
 - **Erase DTCs**

Continue to the next page.

12. When the entire reprogramming process is complete, the screen in Figure 7 will display.
13. Verify the before and after part numbers are different.
14. Print a copy of this screen (Figure 7) and attach it to the repair order for warranty documentation.
15. Select **Confirm**.

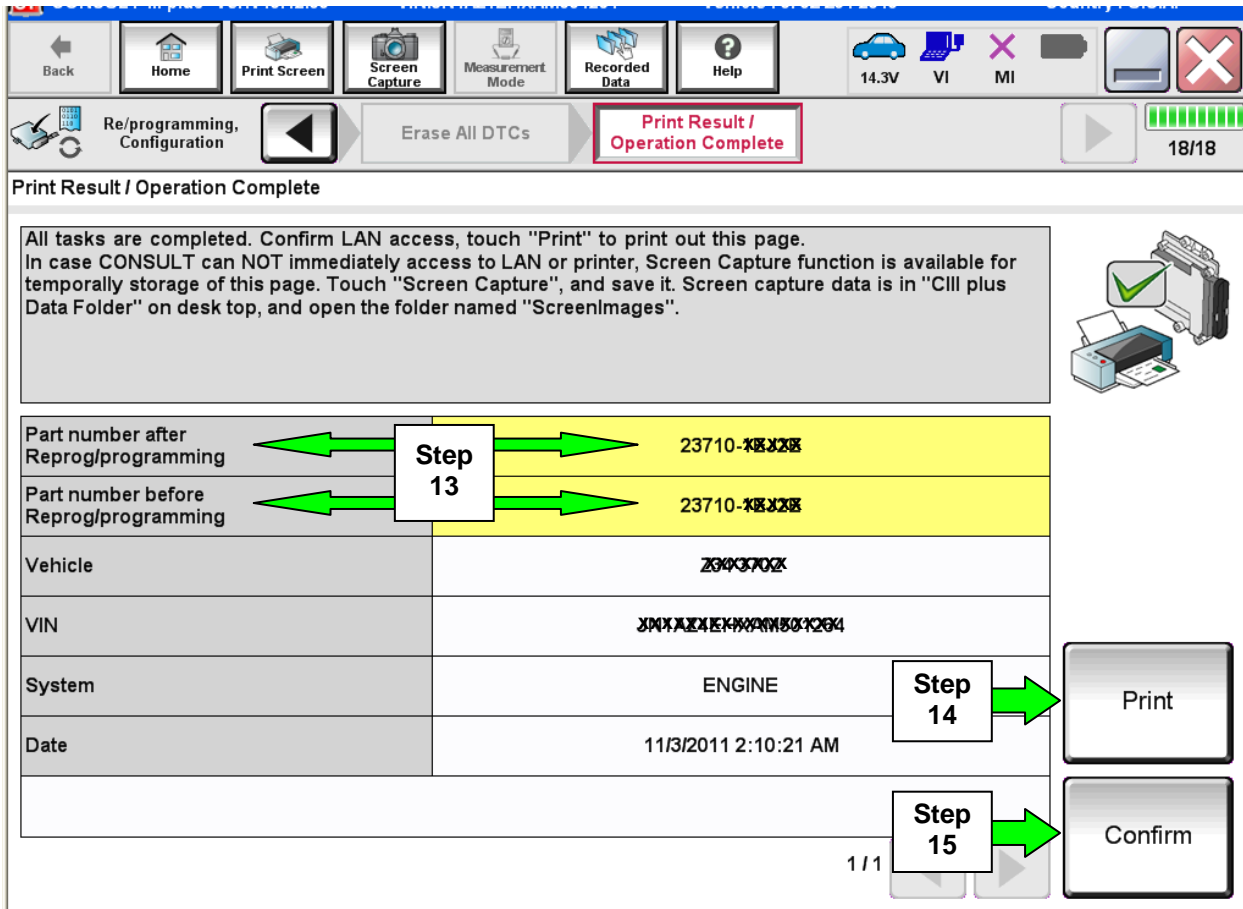


Figure 7

Go to **Active Grille Shutter Inspection** on the next page.

Active Grille Shutter Replacement

- Refer to the **FLOWCHART** on page 2 for shutter replacement applicability.
 - Replace the shutter only if OP code **CX23AA** or **CX24AA** has **not** been performed on this vehicle.
 - Check Service COMM; if either one of the above OP codes has already been performed, the new style shutter is already installed on the vehicle.

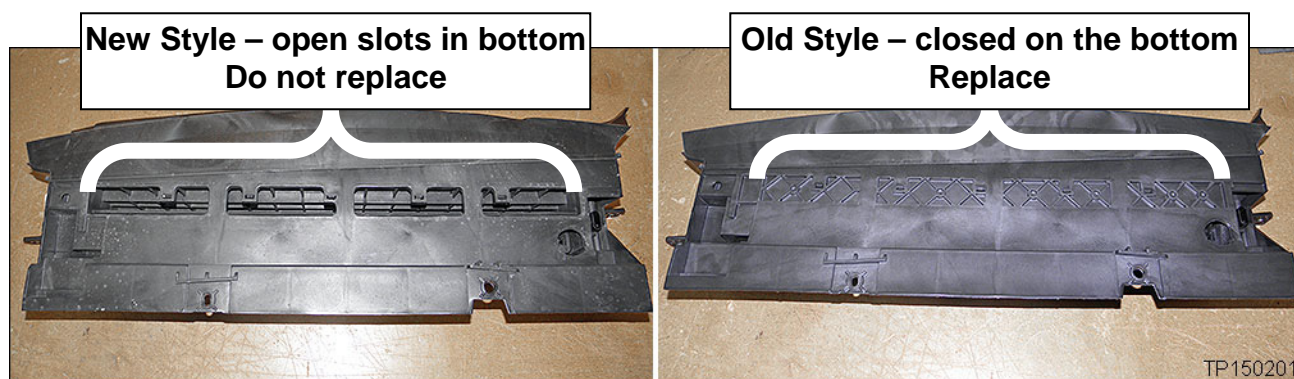


Figure 8

NOTE: If the front undercover is removed from the vehicle, the bottom of the shutter is visible. You can see if the bottom is closed or if it has open slots.

- If shutter replacement is required, refer to the Electronic Service Manual (ESM), section **EXT-Exterior**, for removal and installation information.

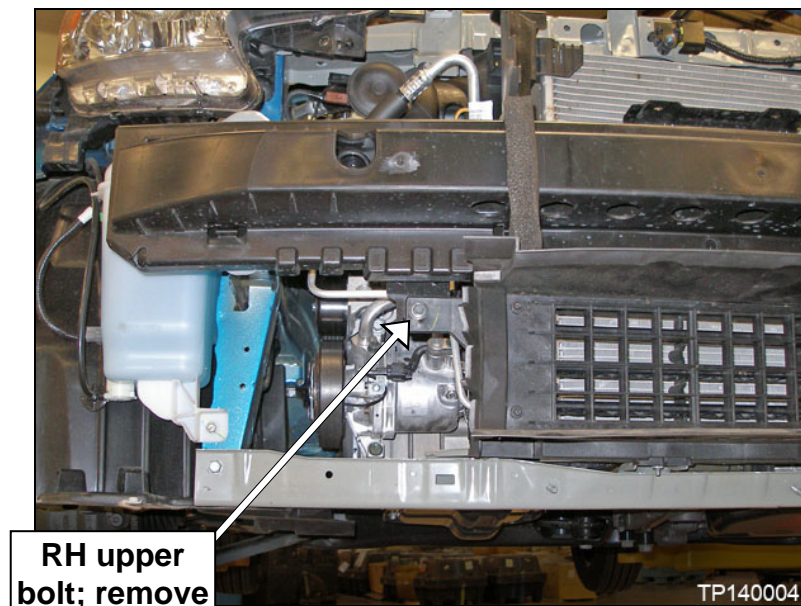
CAUTION: Store the fascia (bumper skin) in a clean area. The fascia is made of resin. Use care when handling to prevent damage. Avoid contact with oily substances and sharp objects.

- Remove any debris found in the area of the shutter (snow, trash, leaves, etc.).
- If the shutter's upper mounting holes interfere with installation of the shutter mounting bolts, go to **Installation/Alignment of Active Grille Shutter Mounting Bolts** on the next page.

Installation/Alignment of Active Grille Shutter Mounting Bolts

NOTE: The following steps are needed **only if** the shutter mounting holes do not align correctly.

1. Leave out the two (2) upper bolts, one at each side (see Figure GS4 and GS5).
 - At this point, the new shutter is installed with the exception of the 2 removed bolts stated above.



GS4

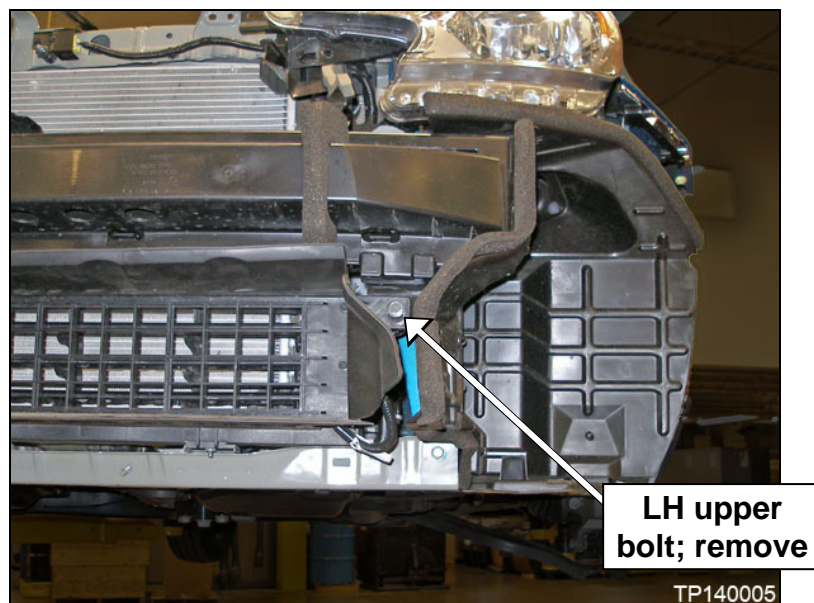


Figure GS5

2. Lift and hold up the new style shutter (from the bottom center) to its normally installed location.

NOTE:

- Do not use excessive force. The intent is to locate the shutter back to its original position without distorting or binding.
3. If the upper bolts cannot be reinstalled easily (the bolt holes interfere - see Figure GS6), loosen the two (2) lower radiator core support bolts (see Figure GS8 further below).
 - Loosen the bolts – do not remove.

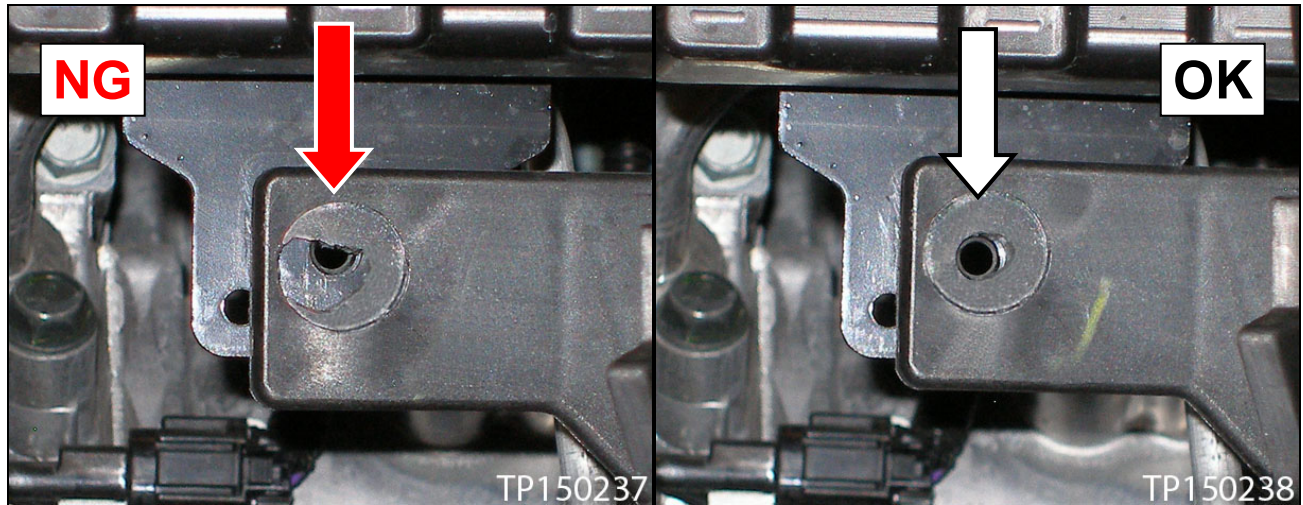


Figure GS6

Figure GS7

2. To adjust the shutter bolt holes from interfering, raise the lower radiator core support (core support) as needed.
 - Raise at the center of the core support.
 - Use a “pole” jack or other suitable support tool.

CAUTION: Do not use excessive force. Damage may occur to the lower radiator core support.
3. Once the shutter bolt holes are properly adjusted, tighten the core support bolts.
 - Core support bolts torque: 24.0 N•m (2.45 kg-m, **17.7 ft lbs**)

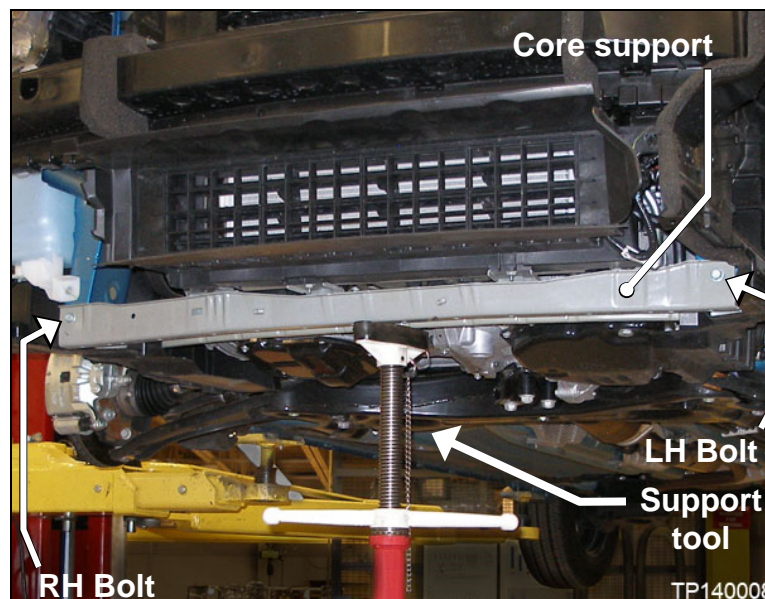


Figure GS8

4. Remove the support tool; verify there is still no interference at the shutter bolt holes.
5. Install the shutter bolts.
 - Shutter bolts torque: 5.5 N•m (0.56 kg-m, **48.7 in lbs**)
6. Reinstall the front under cover and fascia.
 - Refer to the ESM, section **EXT-Exterior**, for installation procedure.
7. Calibrate the shutter.
 - Refer to DTC P059F in the **B ENGINE > EC Engine Control System** section of the ESM.
 - If shutter calibration completes, the shutter is properly adjusted and working normally.
8. Close C-III plus.
9. Turn the ignition OFF.
10. Disconnect the plus VI from the vehicle.
11. Make sure the vehicle operates correctly and the MIL is OFF.
 - If the MIL comes ON, go back to ASIST for further diagnostic information.
 - Diagnosis and repairs beyond ECM reprogramming and shutter replacement are not covered by this bulletin.

PARTS INFORMATION

DESCRIPTION	PART #	QUANTITY
SHUTTER ASSY-RADIATOR (Active Grille Shutter)	21421-3VY0A	1 *

* If needed. See **FLOWCHART** on page 2.

CLAIMS INFORMATION

Submit a Primary Part (PP) type line claim using the following claims coding:

DESCRIPTION	PFP	OP CODE	SYM	DIA	FRT
Reprogram ECM and Replace Grille Shutter	(1)	CX23AA	ZE	32	2.2

(1) Refer to the electronic parts catalog (FAST) and use the radiator shutter assembly part number (21421-xxxxx) as the Primary Failed Part (PFP).

If needed

DESCRIPTION	OP CODE	FRT
Adjust Grille Shutter	CX231A	0.2

OR

Submit a Primary Part (PP) type line claim using the following claims coding:

DESCRIPTION	PFP	OP CODE	SYM	DIA	FRT
Replace Grille Shutter and No ECM Reprogram	(1)	CX24AA	ZE	32	1.6

(1) Refer to the electronic parts catalog (FAST) and use the radiator shutter assembly part number (21421-xxxxx) as the Primary Failed Part (PFP).

If needed

DESCRIPTION	OP CODE	FRT
Adjust Grille Shutter	CX241A	0.2