



SERVICE BULLETIN

Classification: BT15-015	Reference: NTB15-048	Date: May 20, 2015
-----------------------------	-------------------------	-----------------------

2014-2015 ROGUE; VIBRATION IN STEERING WHEEL OR PASSENGER FRONT SEAT AT IDLE

APPLIED VEHICLE: 2014 – 2015 Rogue (T32)

IF YOU CONFIRM

Vibration, booming or drone is present while stopped, at idle and transmission is in Drive:

- From the steering wheel with the A/C **ON**.
- Or
- From the front passenger seat with the A/C **OFF**.
- And
- The level of vibration is greater than a known good vehicle.

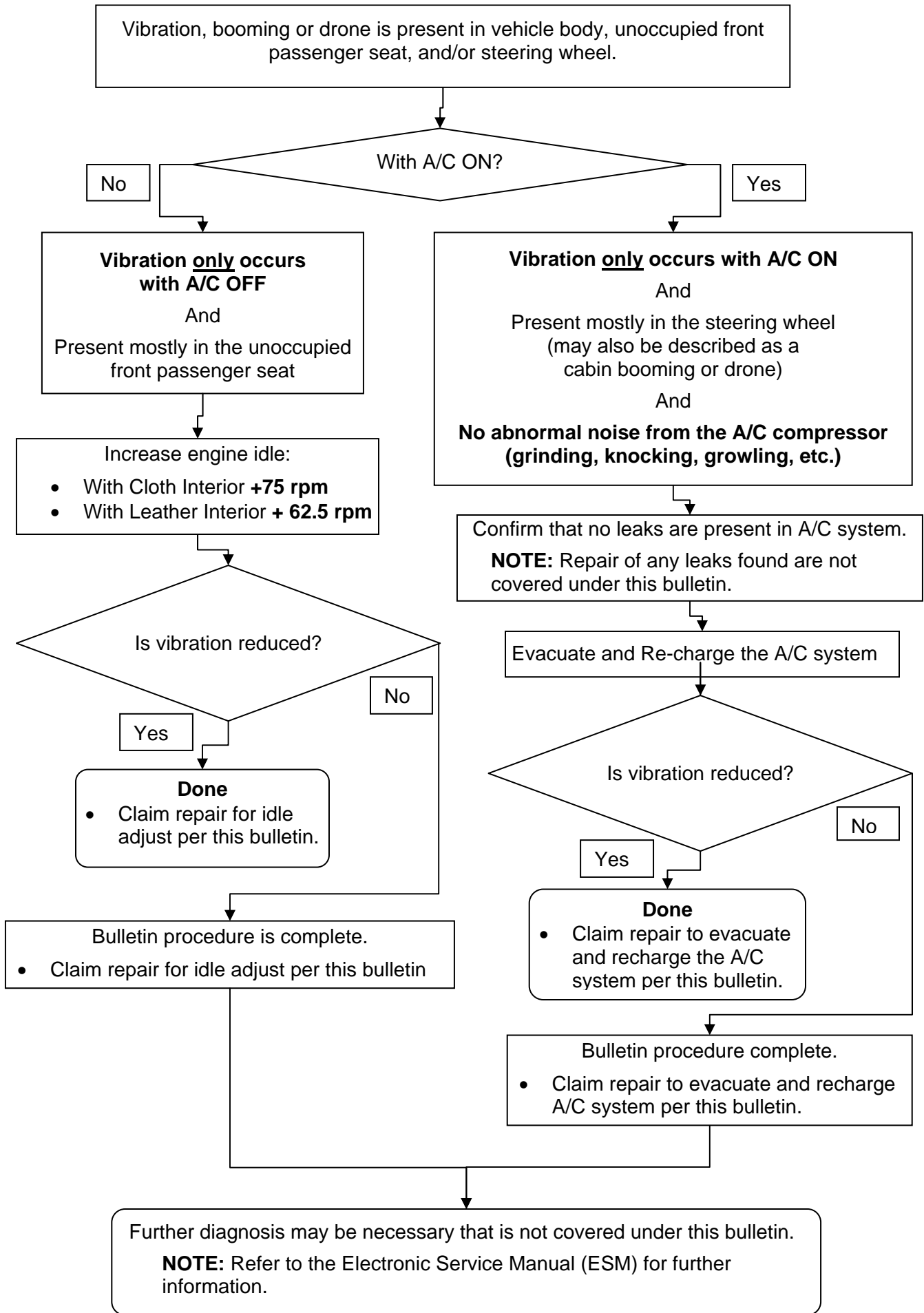
ACTION

Refer to the Flow Chart on page 2 to confirm if this bulletin applies.

Customer Information

- Slight noise and/or vibration under the conditions described above are a normal operating characteristic of this vehicle and are within design specifications for the vehicle.
- For those customers who are particularly sensitive to this characteristic of their vehicles, the service procedure described in this bulletin may be performed. However, the customer should be advised that this may not completely eliminate the vibration, booming, or drone.

Nissan Bulletins are intended for use by qualified technicians, not 'do-it-yourselfers'. Qualified technicians are properly trained individuals who have the equipment, tools, safety instruction, and know-how to do a job properly and safely. NOTE: If you believe that a described condition may apply to a particular vehicle, DO NOT assume that it does. See your Nissan dealer to determine if this applies to your vehicle.



SERVICE PROCEDURE

1. With the engine and transmission at normal operating temperatures and the transmission in Drive (D) while at idle, is there a vibration, booming or drone present:

- With the A/C ON?
 - Proceed to step 2.
- With the A/C OFF?
 - Proceed to step 3.

2. If the vibration only occurs with A/C ON:

a. Verify that the vibration is present in the steering wheel.

- If the vibration is present in the steering wheel, proceed to step 2b.
- If the vibration is not present in the steering wheel with the A/C ON, this section of the bulletin does not apply.

b. Verify that there are not any abnormal noises from the A/C compressor (grinding, knocking, growling, etc.).

- If compressor is found to be the source of the vibration or noise, repair and retest, and then return to step 2a.

NOTE: The inspection and repair of the Air Conditioning compressor is not covered under this bulletin.

- Refer to the ESM, section for further information.
- If the compressor is not the source of the vibration, proceed to step 2c.

c. Verify that there are no refrigerant leaks present in the A/C system.

- Repair any leaks before proceeding to step 2d.

NOTE: The inspection and repair of any leaks that are found are not covered under this bulletin.

- Refer to the ESM for further information.

d. Evacuate and recharge the A/C system and then proceed to step 4.

- Refer to the ESM for further information.

3. If the vibration only occurs with A/C OFF:

- a. Verify that the vibration is present in an unoccupied front passenger seat and then proceed to step 3b.
 - If the vibration is not present in the front passenger seat with the A/C OFF, this section of the bulletin does not apply.
- b. Increase engine target idle as follows:
 - With Cloth Interior, increase 75 rpm
 - With Leather Interior, increase 62.5 rpm

NOTE: Example of CONSULT-III plus screen for target idle adjustment shown in Figure 1.

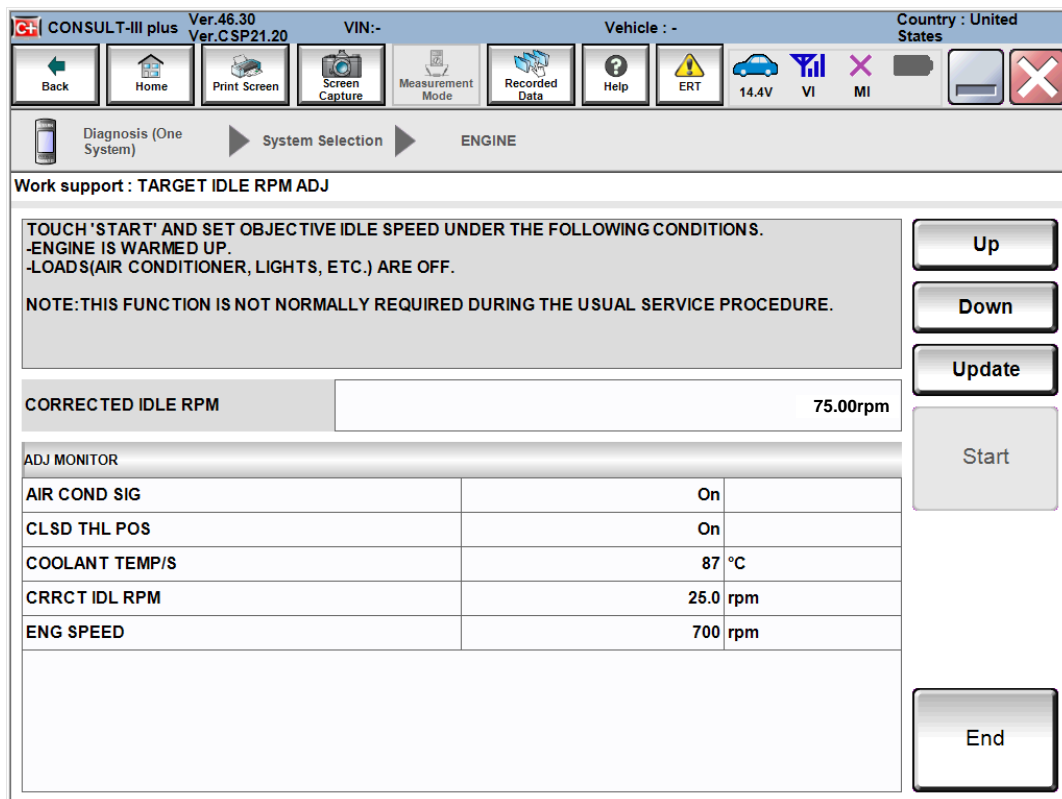


Figure 1

4. If the vibration has not changed, further diagnosis may be necessary, and is not covered under this bulletin.

NOTE: Refer to the ESM for further information.

CLAIMS INFORMATION *

Submit a Primary Operation (PO) type line claim using the following claims coding:

DESCRIPTION	OP CODE	SYM	DIA	FRT
Adjust Base Idle	WC32AA	AH	32	0.3

* This repair is only covered during the vehicles adjustment warranty period of 12 months or 12,000 miles whichever occurs first.

Or

Submit a Primary Operation (PO) type line claim using the following claims coding:

DESCRIPTION	OP CODE	SYM	DIA	FRT
Evacuate and Recharge A/C System	WH60AA	AH	32	0.6

* This repair is only covered during the vehicles adjustment warranty period of 12 months or 12,000 miles whichever occurs first.

