

Classification:

EL15-012

Reference:

ITB15-019

COPYRIGHT© NISSAN NORTH AMERICA, INC.
Date:

April 30, 2015

CONFIGURATION FOR BLANK REPLACEMENT BCM

APPLIED VEHICLES:	2003 – 2006 G35 Sedan (V35)	2009 – 2013 G37 Convertible (V36)
	2007 – 2008 G35 Sedan (V36)	2014 – 2015 Q60 Convertible (V36)
	2009 – 2013 G37 Sedan (V36)	2003 – 2008 FX35/45 (S50)
	2011 – 2012 G25 Sedan (V36)	2006 – 2010 M35/45 (Y50)
	2003 – 2007 G35 Coupe (V35)	2015 Q40 (V36)
	2008 – 2013 G37 Coupe (V36)	
	2014 – 2015 Q60 Coupe (V36)	

SERVICE INFORMATION

The Body Control Module (BCM) for the Applied Vehicles above is now shipped as a “blank” unit.

As with previous BCM replacements, when a blank unit is installed, the configuration process **must** be performed.

When performing Configuration, the Read/Write method is recommended. It is the best process for getting the new BCM configured properly.

When a blank unit is installed as a replacement:

- **Read/Write Configuration** will work the same as with previous replacement units.
- **Manual Configuration** will require obtaining a “Type ID” from the electronic parts catalog (FAST or equivalent).

Refer to [Using A Blank Replacement BCM](#) on the next page for additional information.

Infiniti Bulletins are intended for use by qualified technicians, not 'do-it-yourselfers'. Qualified technicians are properly trained individuals who have the equipment, tools, safety instruction, and know-how to do a job properly and safely. NOTE: If you believe that a described condition may apply to a particular vehicle, DO NOT assume that it does. See your Infiniti dealer to determine if this applies to your vehicle.

USING A BLANK REPLACEMENT BCM

Read/Write Configuration

Using Read/Write Configuration will work the same as with previous replacement BCMs, and is the preferred method for performing configuration.

- Follow the configuration steps using CONSULT-III plus (C-III plus), the Electronic Service Manual (ESM), and the C-III plus Operators Manual.
- Check ASIST for any TSBs that may be related to the specific system you are working on. From time to time TSBs are published that give helpful information for BCM configuration.
- After BCM configuration is complete: Register I-Keys, Key-Fobs (If applicable), and complete the TPMS registration.

NOTE:

- Some older models may not be compatible with Read/Write Configuration.
- If your vehicle is not compatible, the C-III plus screen shown in Figure 1 will display when the Read process is attempted.
- In this case, use Manual Configuration on the next page.

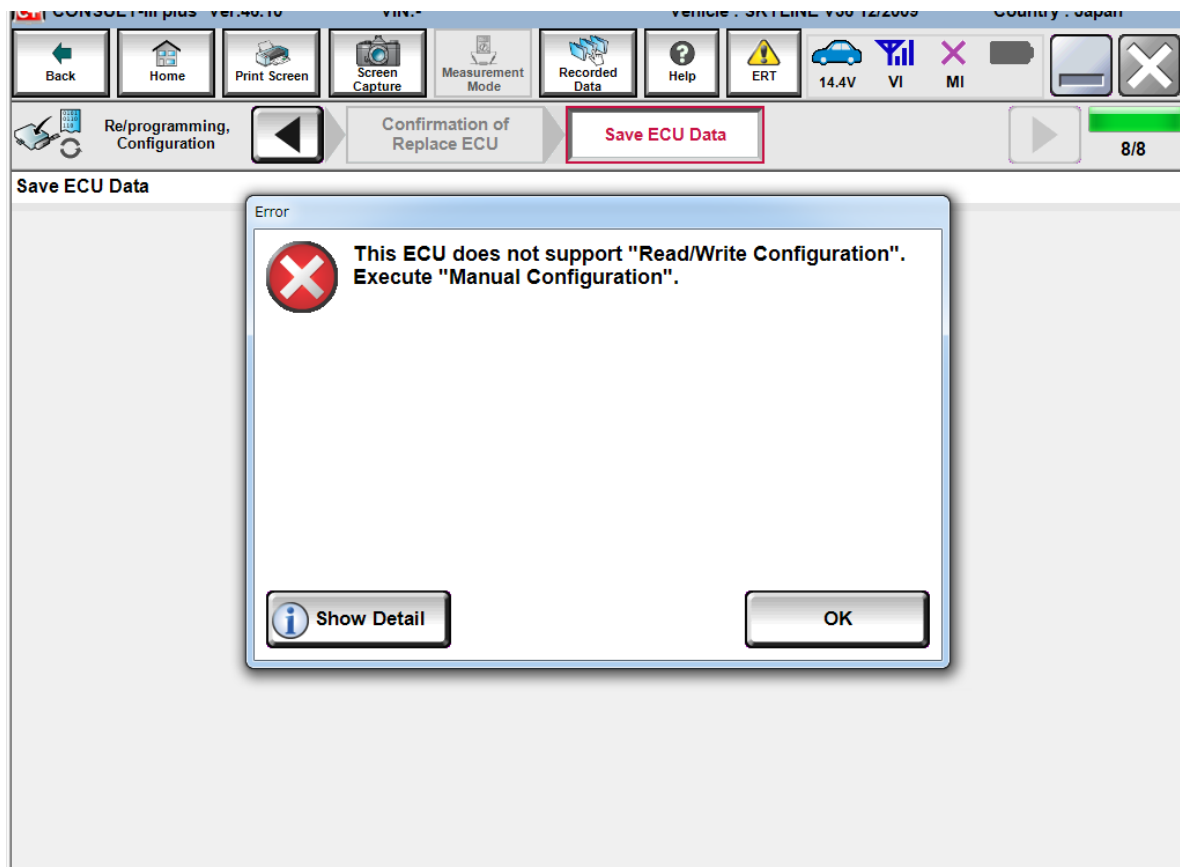


Figure 1

Manual Configuration When Installing a Blank BCM

Use Manual Configuration if the old BCM is not accessible (cannot be read) with C-III Plus, or is not compatible with Read/Write Configuration.

1. Manual Configuration will require obtaining the "Type ID" from the electronic parts catalog (FAST or equivalent).
 - a. The VIN must be used to look up the BCM part number.
 - b. The BCM (CONTROLLER ASSY-BCM) part number will be listed as shown in Figure 2.
 - c. The Type ID (ID NO FOR BCM CONFIGURATION) will be listed as shown in Figure 2.
 - d. Write down the Type ID number; it will be used to perform Manual Configuration.

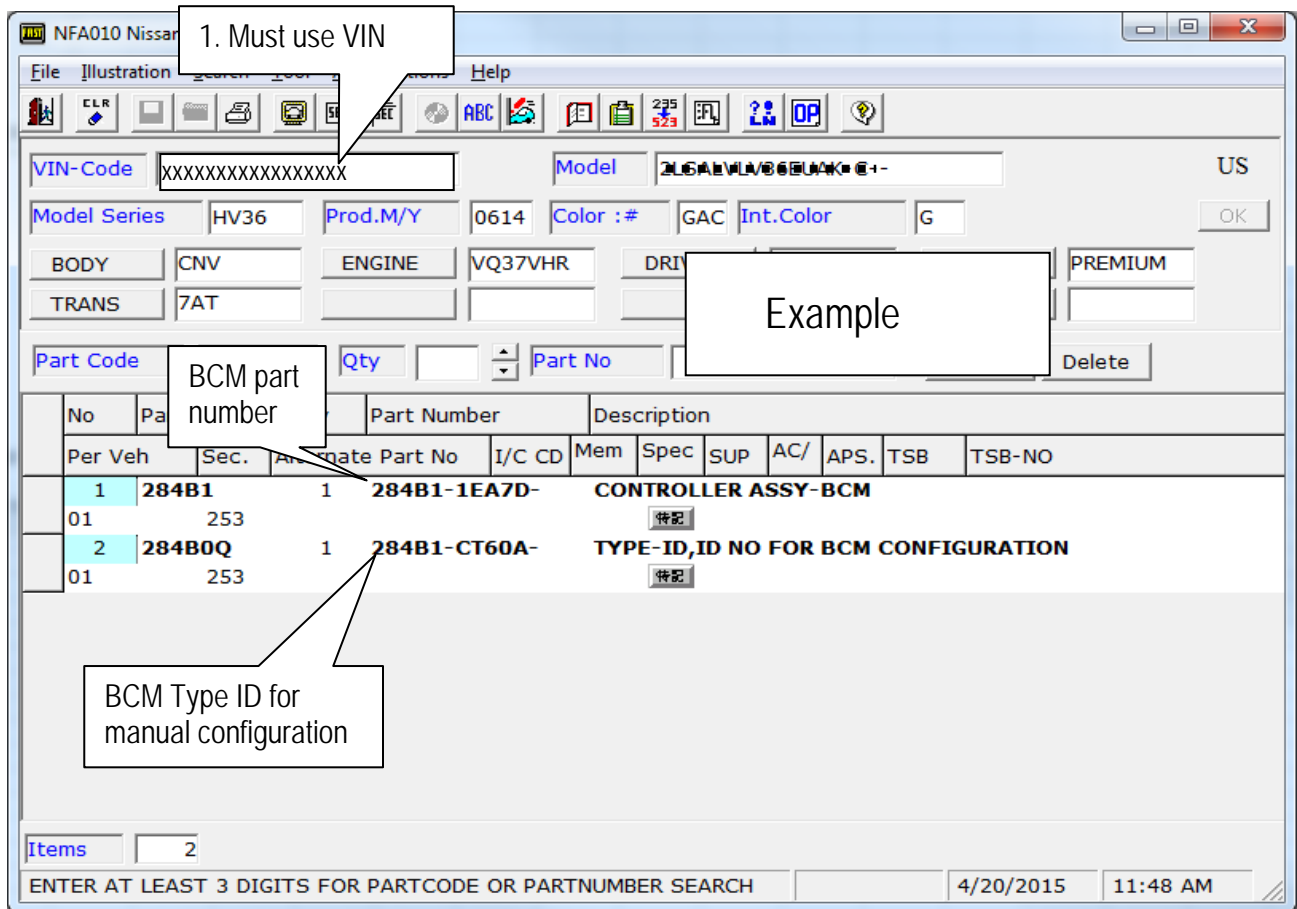


Figure 2

2. Make sure ASIST on the CONSULT PC has been synchronized (updated) to the current date and all C-III plus software updates (if any) have been installed.
 - The CONSULT PC automatically gets applicable configuration data during ASIST synchronization.
 3. Install the new "blank" BCM.
 4. Turn ON the Hazard Lights (4 way flashers).
 5. Connect the CONSULT PC to the vehicle.
 6. Open/start C-III plus.
 7. Navigate C-III plus to perform Manual Configuration.
 8. When you get to the screen shown in Figure 3, enter the Type ID number you obtained from step 1.
- NOTE:** If the screen shown in Figure 3 does not display, recheck the replacement BCM part number using FAST. Make sure a "blank" BCM has been installed.
9. After entering the Type ID, select Next and navigate C-III plus to complete the configuration process.
 - When using the Type ID to perform manual configuration, manually selecting the "Setting Values" is not needed.

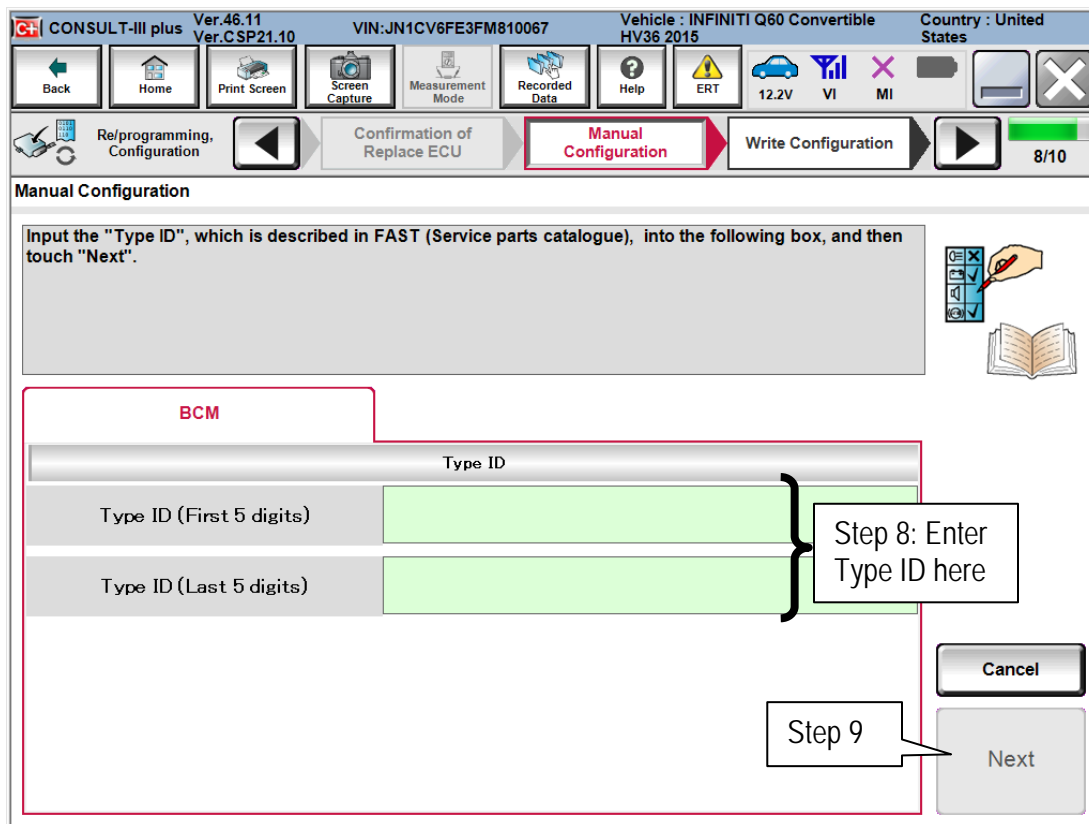


Figure 3

10. After BCM configuration is complete: Register I-Keys, Key-Fobs (If applicable), and complete the TPMS registration.

11. Check ASIST for any TSBs that may be related to the specific system you are working on.

- From time to time TSBs are published that give helpful information for BCM configuration.

