



## SERVICE BULLETIN

Classification:

EC12-012j

Reference:

NTB12-051j

Date:

January 30, 2015

### MIL ON WITH DTC P0101

This bulletin has been amended. The Applied Vehicles section and Table A on page 7 have been updated. Please discard all previous versions of this bulletin.

**APPLIED VEHICLES:**

- 2011-2012 Altima Coupe (CL32)
- 2011-2012 Altima Sedan (L32)
- 2013-2015 Altima Sedan (L33) with **QR25DE engine only**
- 2011-2012 cube<sup>®</sup> (Z12)
- 2011-2012 Frontier (D40) with **VQ40DE engine only**
- 2011-2012 Maxima (A35)
- 2012 NV Cargo Van (F80) with **VQ40DE engine only**
- 2011-2012 Pathfinder (R51) with **VQ40DE engine only**
- 2011-2012 Sentra (B16) with **MR20DE engine only**
- 2012 Versa Sedan (N17)
- 2011-2012 Xterra (N50)

### IF YOU CONFIRM

- The MIL is ON with DTC P0101 for Mass Air Flow sensor (MAF) stored in the ECM.
- AND**
- There are no drivability concerns.

### ACTION

1. Refer to step 6 in the **SERVICE PROCEDURE** to confirm this bulletin applies to the vehicle you are working on.
2. If this bulletin applies, reprogram the ECM.

**IMPORTANT:** The purpose of **ACTION** (above) is to give you a quick idea of the work you will be performing. You **MUST** closely follow the entire **SERVICE PROCEDURE** as it contains information that is essential to successfully completing this repair.

Nissan Bulletins are intended for use by qualified technicians, not 'do-it-yourselfers'. Qualified technicians are properly trained individuals who have the equipment, tools, safety instruction, and know-how to do a job properly and safely. NOTE: If you believe that a described condition may apply to a particular vehicle, DO NOT assume that it does. See your Nissan dealer to determine if this applies to your vehicle.

## SERVICE PROCEDURE

### NOTE:

- Most instructions for reprogramming with CONSULT-III plus (C-III plus) are displayed on the CONSULT PC screen.
- If you are not familiar with the reprogramming procedure, [click here](#). This will link you to the "CONSULT- III plus (C-III plus) ECM Reprogramming" general procedure.
- Take the vehicle for a 10 minute drive in order to meet the following Idle Air Volume Learn (IAVL) conditions:
  - Engine coolant temperature: 70 -100°C (158 -212°F)
  - Battery voltage: More than 12.9V (At idle)
  - Transmission: Warmed up



Figure A

- After reprogramming is complete, you will be required to perform Throttle Valve Closed Position, Idle Air Volume Learn, Accelerator Closed Position, and DTC erase.

### CAUTION:

- Connect the GR8 to the 12V battery and select ECM Power Supply Mode. If the vehicle battery voltage drops below 12.0V or above 15.5V during reprogramming, the ECM may be damaged.
- Be sure to turn OFF all vehicle electrical loads. If a vehicle electrical load remains ON, the ECM may be damaged.
- Be sure to connect the AC Adapter. If the CONSULT PC battery voltage drops during reprogramming, the process will be interrupted and the ECM may be damaged.
- Turn off all external Bluetooth® devices (e.g., cell phones, printers, etc.) within range of the CONSULT PC and the VI. If Bluetooth® signal waves are within range of the CONSULT PC during reprogramming, reprogramming may be interrupted and the ECM may be damaged.

1. Connect the CONSULT PC to the vehicle to begin the reprogramming procedure.
2. Start C-III plus.
3. Wait for the plus VI to be recognized / connected.
  - The serial number will display when the plus VI is recognized / connected.
4. Select **Re/programming, Configuration**.

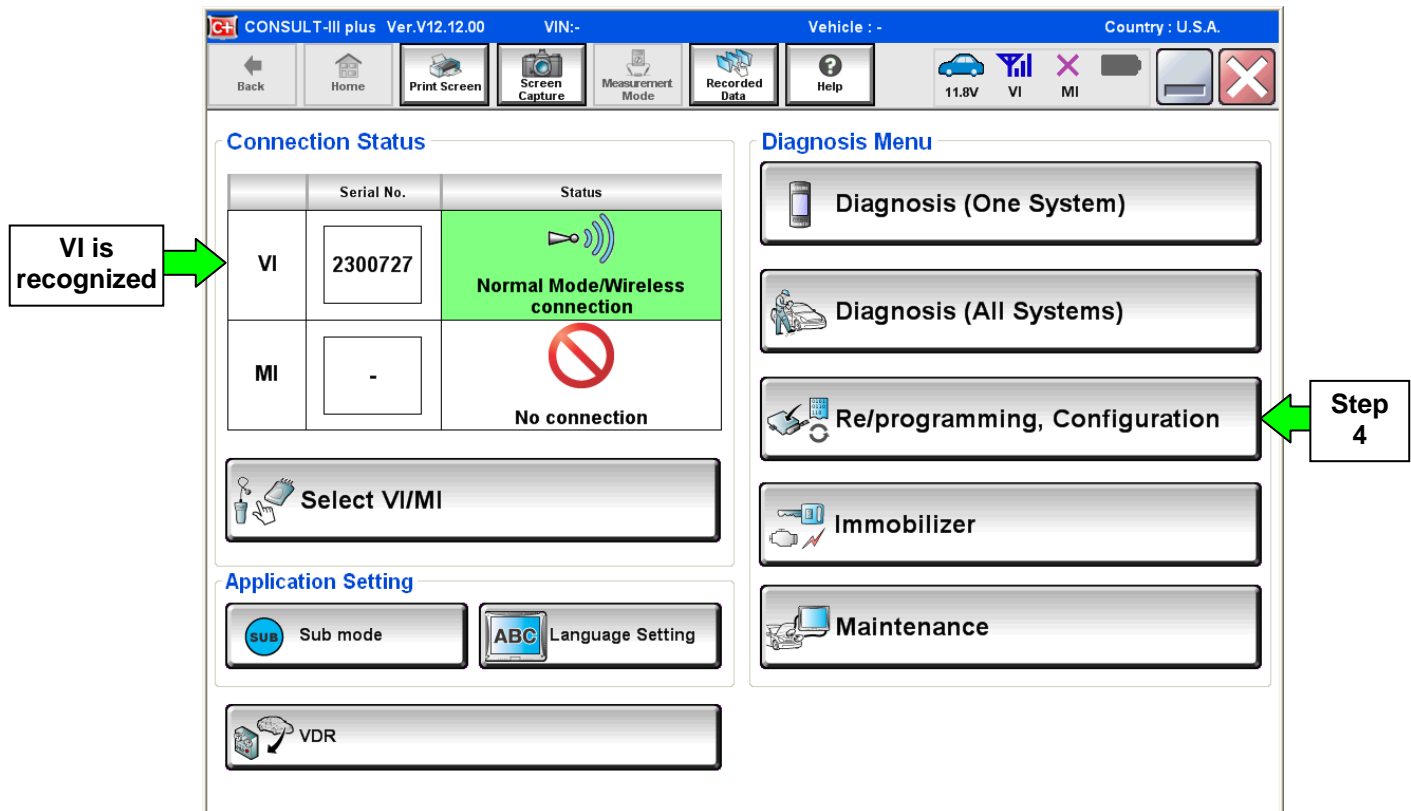


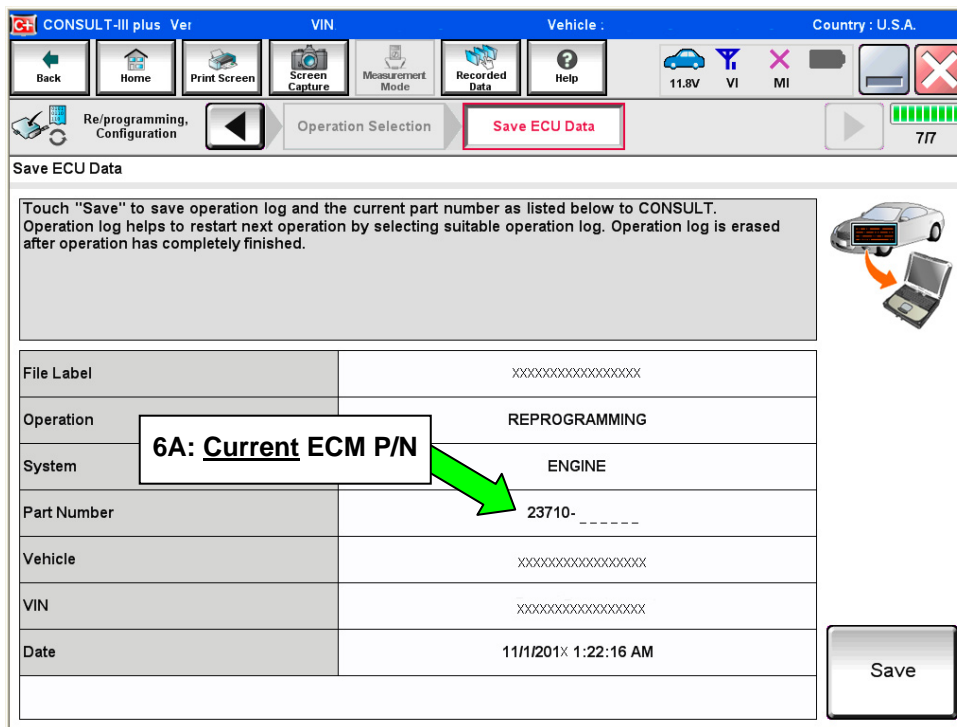
Figure 1

5. Follow the on-screen instructions and navigate the C-III plus to the screen shown in Figure 2 on the next page.

6. When you get to the screen shown in Figure 2, confirm this bulletin applies as follows.

A. Find the ECM **Part Number** and write it on the repair order.

**NOTE:** This is the current ECM Part Number (P/N).



CONSULT-III plus Ver. VIN Vehicle : Country : U.S.A.

Back Home Print Screen Screen Capture Measurement Mode Recorded Data Help 11.8V VI MI

Re/programming, Configuration Operation Selection **Save ECU Data**

7/7

Save ECU Data

Touch "Save" to save operation log and the current part number as listed below to CONSULT. Operation log helps to restart next operation by selecting suitable operation log. Operation log is erased after operation has completely finished.

File Label	XXXXXXXXXXXXXXXXXX
Operation	REPROGRAMMING
System	ENGINE
Part Number	23710- _____
Vehicle	XXXXXXXXXXXXXXXXXX
VIN	XXXXXXXXXXXXXXXXXX
Date	11/1/201X 1:22:16 AM

Save

Figure 2

B. Compare the P/N you wrote down to the numbers in the **Current ECM Part Number** column in **Table A** on the next three pages.

- If there is a match, this bulletin applies. Continue with the reprogramming procedure.
- If there is not a match, this bulletin does not apply. Close C-III plus and refer to ASIST for further diagnostic information.

**Table A**

<b>Model</b>	<b>Current ECM Part Number: 23710-</b>
<b>2011 Altima (with QR25DE engine)</b>	ZX56A
	ZX57A
	ZX58A, ZX58B, ZX58C
	ZX59A, ZX59B, ZX59C
	9HA7A, 9HA7B, 9HA7C
	9HA8A, 9HA8B, 9HA8C
<b>2011 Altima (with VQ35DE engine)</b>	ZX50A, ZX51A, ZX53A, ZX54A, ZX55A
	9HA0C, 9HA1C, 9HA2C, 9HA3C, 9HA4C
	9HA0D, 9HA2D, 9HA3D
<b>2012 Altima (with QR25DE engine)</b>	9HC0A, 9HC0B, 9HC0C, 9HC0D, 9HC0E
	9HC1A, 9HC1B, 9HC1C, 9HC1D, 9HC1E
	9HC2A, 9HC2B
	9HC3A, 9HC3B
	9HC4A
	9HC5A
	9HA7A, 9HA8A
	9HA7B, 9HA8B
	9HA7C, 9HA8C
<b>2012 Altima (with VQ35DE engine)</b>	9HA0A, 9HA1A, 9HA2A, 9HA3A, 9HA4A
	9HA0B, 9HA1B, 9HA2B, 9HA3B, 9HA4B
	9HA0C, 9HA1C, 9HA2C, 9HA3C, 9HA4C
	9HA0D, 9HA2D, 9HA3D
<b>2013 Altima Sedan (with QR25DE engine)</b>	3TA0A, 3TA0B, 3TA0C
	3TA1B, 3TA1C, 3TA1D
	3TA6A, 3TA7A, 3TA8A
	3TA6B, 3TA7B, 3TA8B
	3TA6C, 3TA7C, 3TA8C
	3TY0A, 3TY0B, 3TY0C
	3TY1A, 3TY1B, 3TY1C
	3TY6A, 3TY7A, 3TY8A
	3TY6B, 3TY7B, 3TY8B
	3TY6C, 3TY7C, 3TY8C
<b>2014 Altima Sedan (with QR25DE engine)</b>	9HM3A, 9HM4A, 9HM5A, 9HM6A, 9HM7A, 9HM8A 9HM3B, 9HM4B, 9HM5B, 9HM6B, 9HM7B, 9HM8B
<b>2015 Altima Sedan (with QR25DE engine)</b>	9HP0A, 9HP1A, 9HP2A, 9HP3A, 9HP4A, 9HP5A

**Table A (continued)**

<b>2011 Sentra (with MR20DE engine)</b>	9AA0A, 9AA1A, 9AA2A, 9AA3A
	9AA4A, 9AA5A, 9AA6A, 9AA7A, 9AA8A
	9AB0A, 9AB0B, 9AB0C
	9AB1A, 9AB1B, 9AB1C
	9AB2A, 9AB2B, 9AB2C
	9AB3A, 9AB3B, 9AB3C
<b>2012 Sentra (with MR20DE engine)</b>	9AF0A, 9AF0B, 9AF0C, 9AF0D
	9AF1A, 9AF1B, 9AF1C, 9AF1D
	9AF2A, 9AF2B, 9AF2C, 9AF2D
	9AF3A, 9AF3B, 9AF3C, 9AF3D
	9AF4A, 9AF4B, 9AF4C, 9AF4D
	9AF5A, 9AF5B, 9AF5C, 9AF5D
	9AF6A, 9AF6B, 9AF6C, 9AF6D
	9AF7A, 9AF7B, 9AF7C, 9AF7D
	9AF8A, 9AF8B, 9AF8C, 9AF8D
	9AH0A, 9AH0B, 9AH0C, 9AH0D
	9AH1A, 9AH1B, 9AH1C, 9AH1D
	9AH2A, 9AH2B, 9AH2C, 9AH2D
	9AH3A, 9AH3B, 9AH3C, 9AH3D
<b>2011 Maxima</b>	ZY70A, ZY71A, ZY70B, ZY71B
<b>2012 Maxima</b>	9DA0A, 9DA1A, 9DA0B, 9DA1B
<b>2011 cube®</b>	1FS0A, 1FS1A, 1FS2A, 1FS3A, 1FS4A, 1FS5A,
	1FS6A, 1FS7A
	1FS0B, 1FS1B, 1FS2B, 1FS3B, 1FS4B, 1FS5B,
	1FS6B, 1FS7B
	1FK0A, 1FK1A, 1FK2A, 1FK3A, 1FK4A, 1FK5A,
	1FK6A, 1FK7A
	1FK0B, 1FK1B, 1FK2B, 1FK3B, 1FK4B, 1FK5B,
	1FK6B, 1FK7B
<b>2012 cube®</b>	1FU2A, 1FU3A, 1FU4A, 1FU5A, 1FU6A, 1FU7A,
	1FU8A, 1FU9A
	1FU2B, 1FU3B, 1FU4B, 1FU5B, 1FU6B, 1FU7B,
	1FU8B, 1FU9B

**Table A (continued)**

<b>2011 Pathfinder (with VQ40DE engine)</b>	ZL76A, ZL77A, ZL78A, ZL79A
<b>2012 Pathfinder (with VQ40DE engine)</b>	9BD8A, 9BD8B, 9BD9A, 9BD9B, 9BE8A, 9BE8B, 9BE9A, 9BE9B
<b>2011 Frontier (with VQ40DE engine)</b>	9BA0A, 9BA2A, 9BA3A, 9BA4A, 9BA5A, 9BA7A, 9BA8A, 9BA9A, 9CA1A, 9CA2A, ZL70A, ZL71A, ZL72A, ZL73A, ZL74A, ZL75A, ZL85A, ZL86A
<b>2012 Frontier (with VQ40DE engine)</b>	9BD0A, 9BD0B, 9BD1A, 9BD1B, 9BD2A, 9BD2B, 9BD3A, 9BD3B, 9BD4A, 9BD4B, 9BD5A, 9BD5B, 9BD6A, 9BD6B, 9BD7A, 9BD7B, 9BE0A, 9BE0B, 9BE1A, 9BE1B, 9BE2A, 9BE2B, 9BE3A, 9BE3B, 9BE4A, 9BE4B, 9BE5A, 9BE5B, 9BE6A, 9BE6B, 9BE7A, 9BE7B, 9CD1A, 9CD1B, 9CD2A, 9CD2B
<b>2011 Xterra (with VQ40DE engine)</b>	9BA0A, 9BA3A, 9CA1A, ZL70A
<b>2012 Xterra (with VQ40DE engine)</b>	9BD0A, 9BD0B, 9BD2A, 9BD2B, 9BE0A, 9BE0B, 9BE2A, 9BE2B
<b>2012 NV Cargo Van (with VQ40DE engine)</b>	1PE1A, 1PE2A, 1PE1C, 1PE2C, 1PF1A, 1PF2A
<b>2012 Versa Sedan</b>	3AF0A, 3AF1A, 3AF2A, 3AF1B, 3AF2B, 3AB2A, 3AB3A, 3AB4A, 3AB9A, 3AB9B, 3AB9C, 3AB2D, 3AB3D, 3AB4D 3AB9D, 3AB2E, 3AB3E, 3AB4E

7. Follow the on-screen instructions to navigate C-III plus and reprogram the ECM.

**NOTE:**

- In some cases, more than one new P/N for reprogramming is available.
  - In this case, the screen in Figure 3 displays.
  - Select and use the reprogramming option that **does not** have the message “Caution! Use ONLY with NTBXX-XXX”.
- If you get this screen and it is blank (no reprogramming listed), it means there is no reprogramming available for this vehicle. Close C-III plus and refer back to ASIST for further diagnosis.

**IMPORTANT:** If C-III plus locks up or freezes at this point or displays “*cannot complete reprogramming, CONSULT PC is set up with User Rights. Reprogramming can be completed with Administrator log in*”, the TOUGHBOOK settings need to be changed so that Users have full access rights. See your Dealership’s IT System Administrator for details.

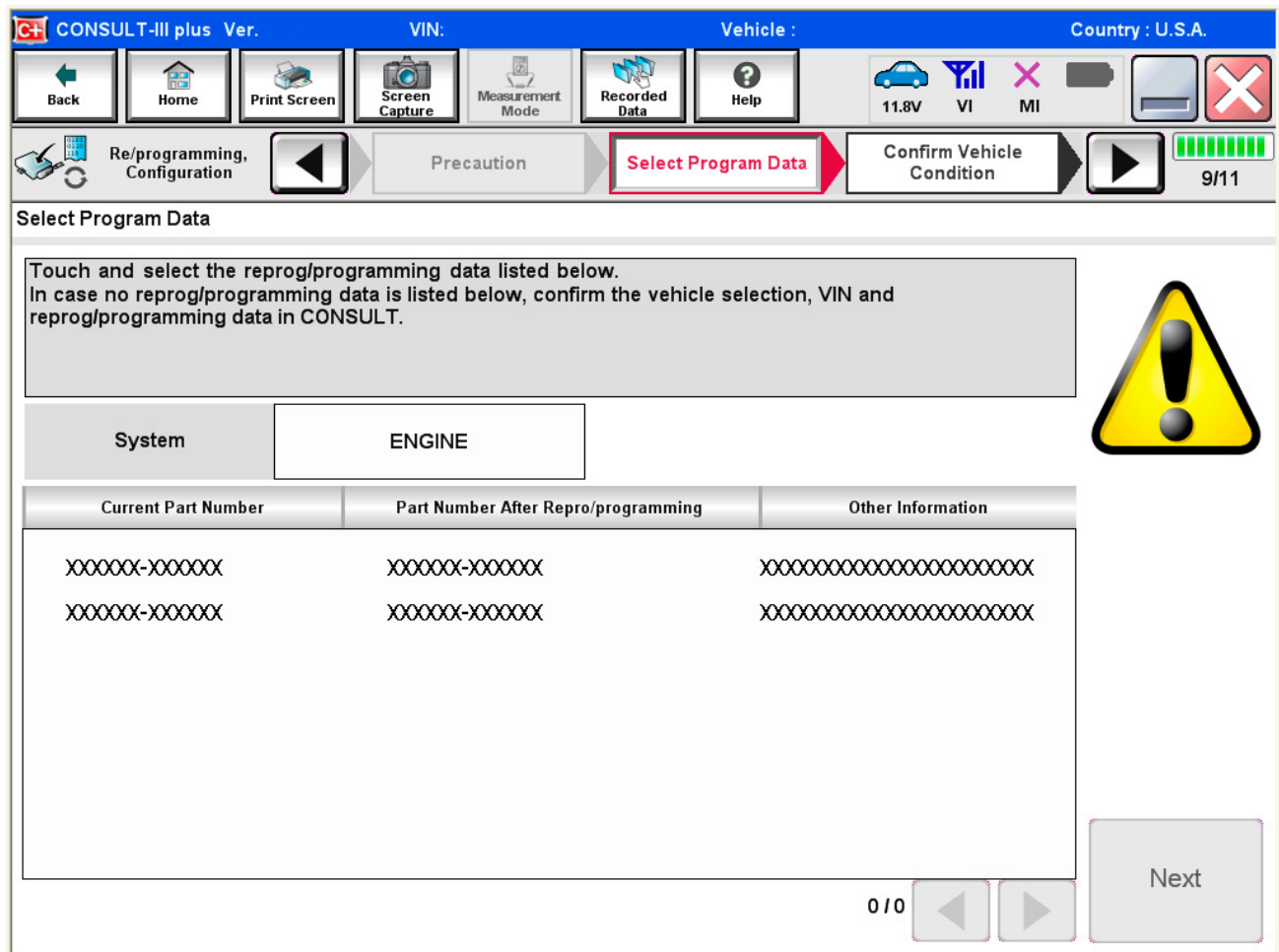


Figure 3



8. When the screen in Figure 4 displays, reprogramming is complete.

**NOTE:** If the screen in Figure 4 does not display (reprogramming does not complete), refer to the information on page 10.

9. Disconnect the battery charger from the vehicle.

10. Select **Next**.

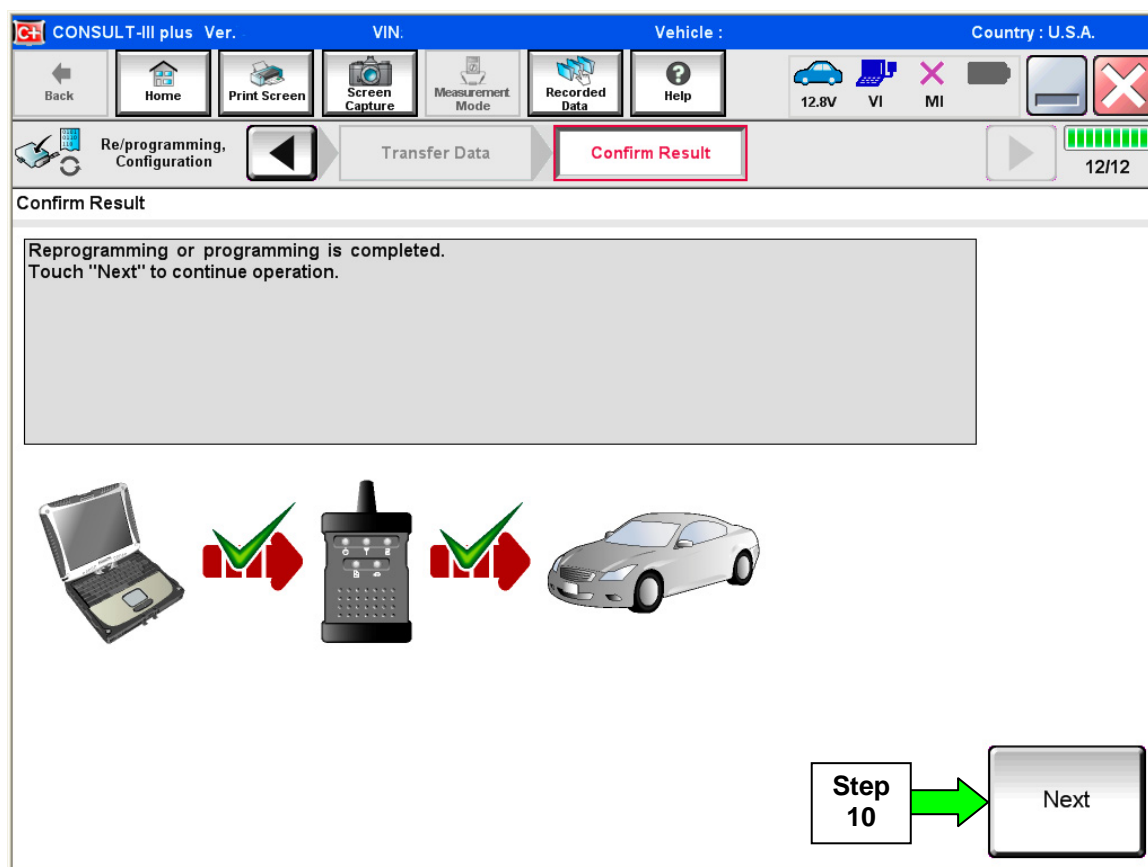


Figure 4

**NOTE:**

- In the next steps, starting on page 11, you will perform Throttle Valve Closed Position, Idle Air Volume Learn, Accelerator Closed Position, and DTC erase.
- These operations are required before C-III plus will provide the final reprogramming confirmation report.

## ECM recovery:

**Do not disconnect plus VI or shut down Consult III plus if reprogramming does not complete.**

If reprogramming does not complete and the “!?” icon displays as shown in Figure 5:

- Check battery voltage (12.0–15.5 V).
- Ignition is ON, engine OFF.
- External Bluetooth® devices are OFF.
- All electrical loads are OFF.
- **Select retry and follow the on screen instructions.**
- “Retry” may not go through on first attempt and can be selected more than once.

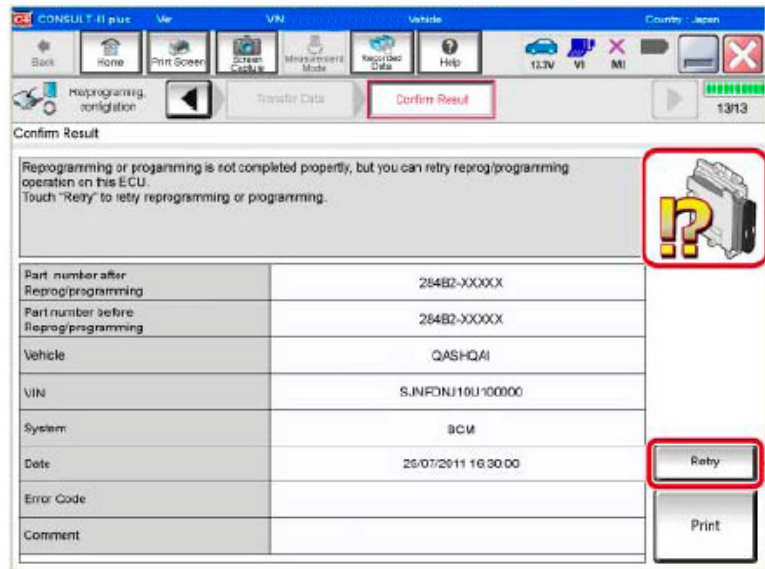


Figure 5

If reprogramming does not complete and the “X” icon displays as shown in Figure 6:

- Check battery voltage (12.0 – 15.5 V).
- CONSULT A/C adapter is plugged in.
- Ignition is ON, engine OFF.
- Transmission is in Park.
- All C-III plus / VI cables are securely connected.
- All C-III plus updates are installed.
- **Select Home, and restart the reprogram procedure from the beginning.**

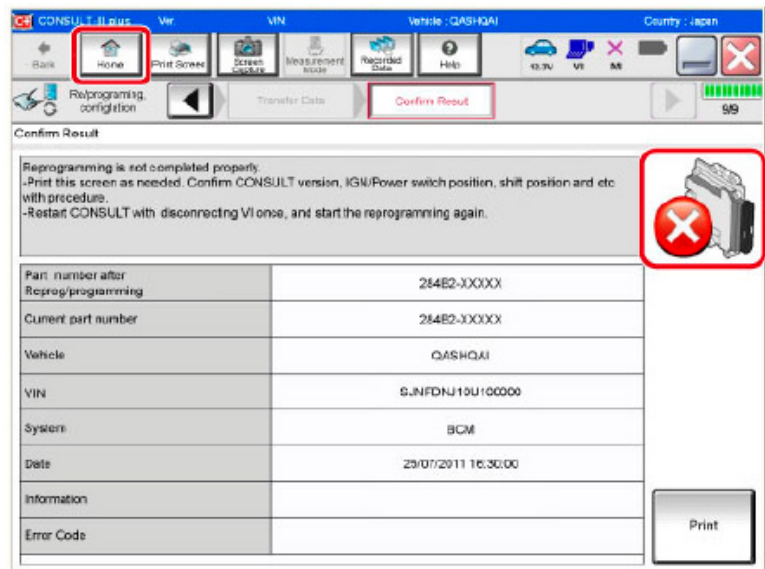


Figure 6

11. Follow the on-screen instructions to perform the following:

- **Throttle Valve Closed Position.**
- **Idle Air Volume Learn (IAVL).**

**NOTE:**

- **Listed below are common conditions required for IAVL to complete.**
- **If IAVL does not complete within a few minutes, a condition may be out of range.**
- **Refer to the appropriate Electronic Service Manual (ESM) for specific conditions required for the vehicle you are working on.**
  - Engine coolant temperature: 70 -100° C (158 -212°F)
  - Battery voltage: More than 12.9V (At idle)
  - Selector lever: P or N
  - Electric load switch: OFF (Air conditioner, headlamp, rear window defogger)
  - Steering wheel: Neutral (Straight-ahead position)
  - Vehicle speed: Stopped
  - Transmission: Warmed up
- **Accelerator Pedal Close Position Learning**
- **Erase DTCs**

Continue to the next page.

12. When the entire reprogramming process is complete, the screen in Figure 7 will display.
13. Verify the before and after part numbers are different.
14. Print a copy of this screen (Figure 7) and attach it to the repair order for warranty documentation.
15. Select **Confirm**.

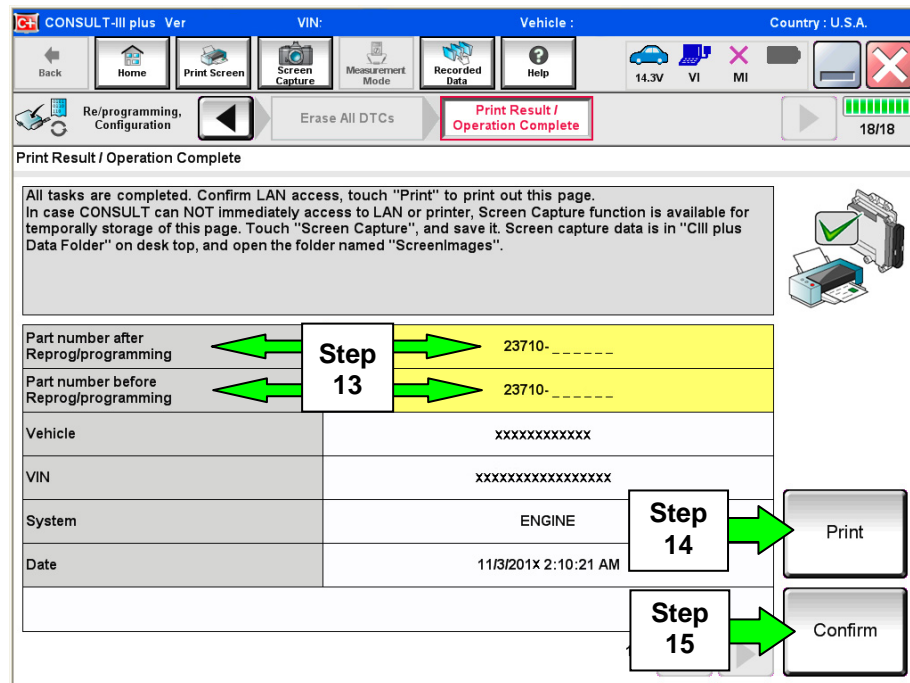


Figure 7

16. Close C-III plus.
17. Turn the ignition OFF.
18. Disconnect the plus VI from the vehicle.
19. Test drive the vehicle and make sure it operates correctly and the MIL is OFF.
  - If the MIL comes ON, go back to ASIST for further diagnostic information.
  - Diagnosis and repairs beyond ECM reprogramming are not covered by this bulletin.

## CLAIMS INFORMATION

Submit a Primary Part (PP) line claim using the following claims coding:

Description	Op Code	PFP	SYM	DIAG	FRT
Reprogram Engine Control Module - ECM	DE97AA	(1)	ZE	32	(2)

- (1) Refer to the electronic parts catalog (FAST) and use the ECM assembly part number as the Primary Part (PFP).
- (2) Reference the current Nissan Warranty Flat Rate Manual and use the indicated flat rate time.