

# TECH TIP

Group:	00-GENERAL
Bulletin No:	TT-14-013
Issue Date:	10-28-2015

## IDLE SHUTDOWN SETUP PROCEDURE

**SUBJECT VEHICLES:** 11MY-16MY Conventional Trucks, 13MY-16MY COE Trucks

**Note:** This technical tip is provided as technical information and is not authorization for a warrantable repair.

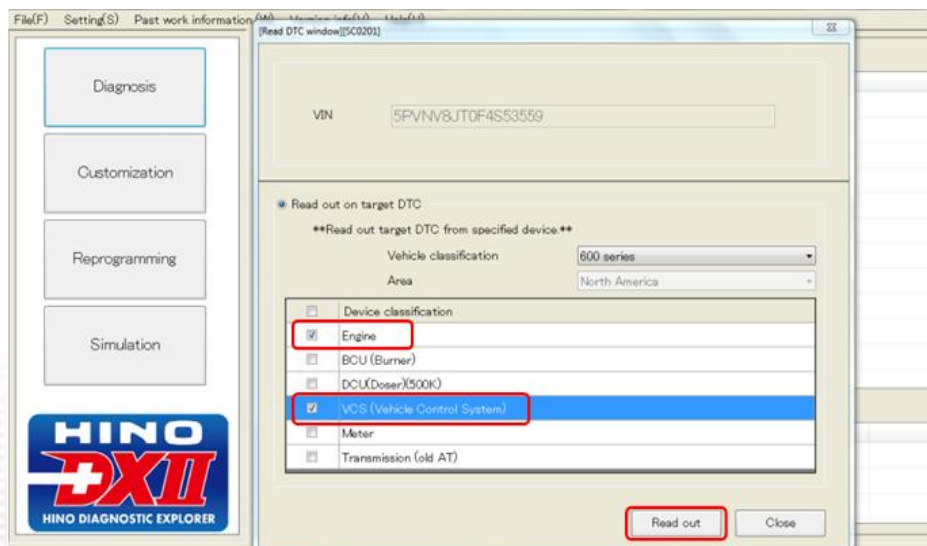
### OVERVIEW:

Some customer's may request to enable to Idle Shutdown to save on fuel costs and Idling time. The procedure below will detail how to enable the Idle Shutdown timer.

## REPAIR PROCEDURE

### CONVENTIONAL TRUCKS

1. Using the Hino DX2, Select "Diagnosis", "600 Series". Select the Engine and VCS modules to be read out.

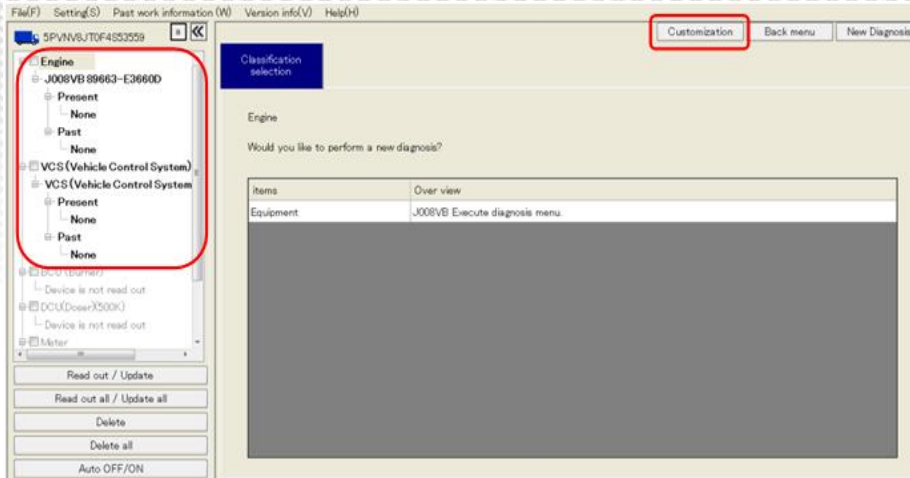


A Toyota Group Company

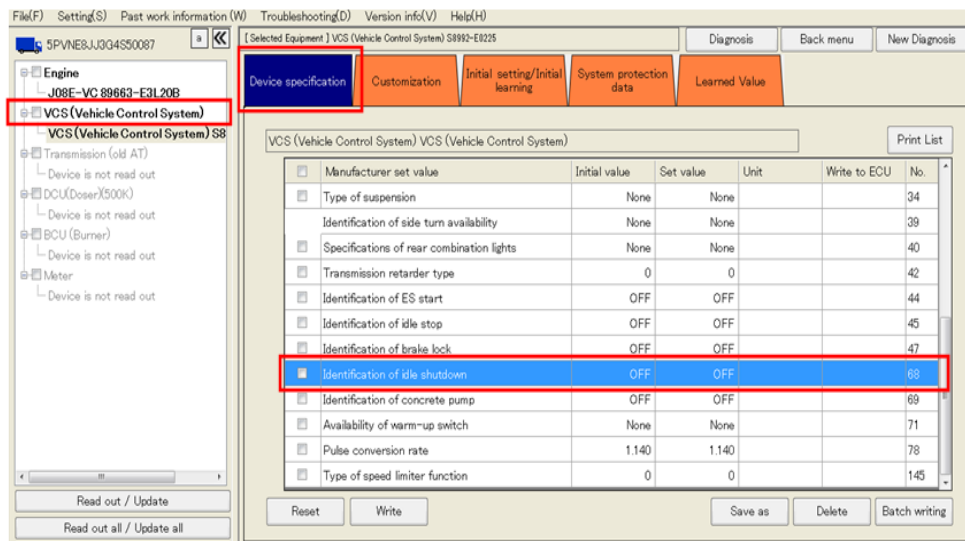
# TECH TIP

Group:	00-GENERAL
Bulletin No:	TT-14-013
Issue Date:	10-28-2015

2. Verify that there are no Diagnostic Codes present. If there are DTC's present they must be addressed before continuing. Select the "Customization" menu to continue.



3. Select the "VCS" module on the left menu pane. Click "Device Specification" and scroll down and select the "Identification of Idle Shutdown No. 68" parameter.

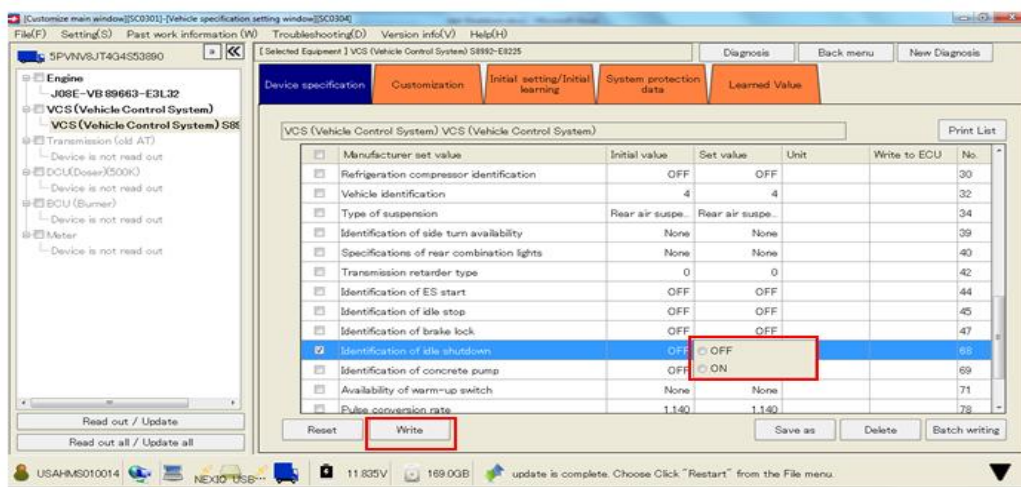


A Toyota Group Company

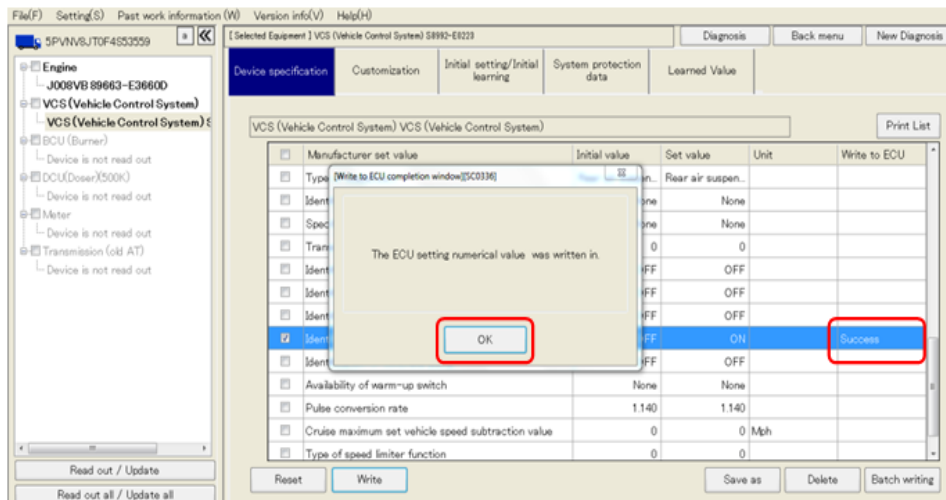
# TECH TIP

Group:	00-GENERAL
Bulletin No:	TT-14-013
Issue Date:	10-28-2015

4. Click in the “Set Value” column and select “On” in the pop up box. Select the “Write” button to change the setting.



5. Select “Ok” in the pop up prompts. Verify that the “Write to ECU” indicates “Success”.

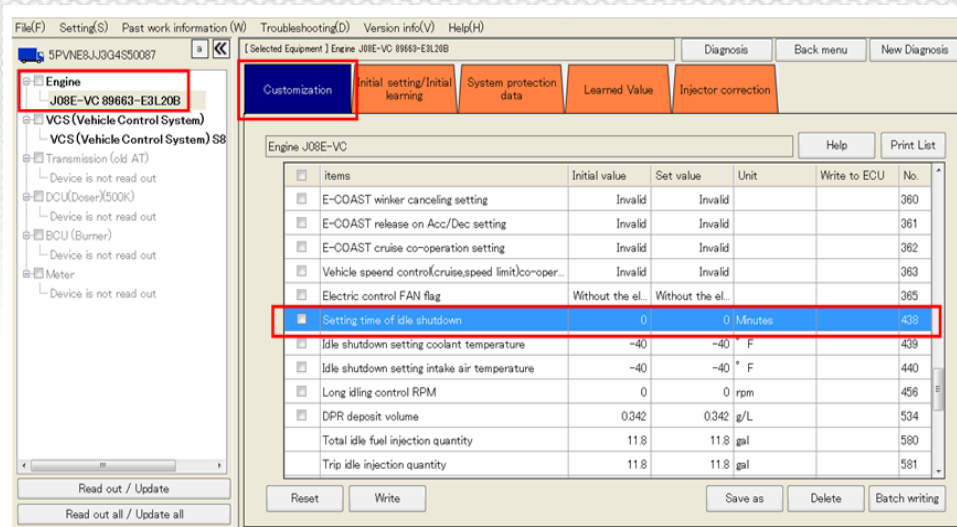


A Toyota Group Company

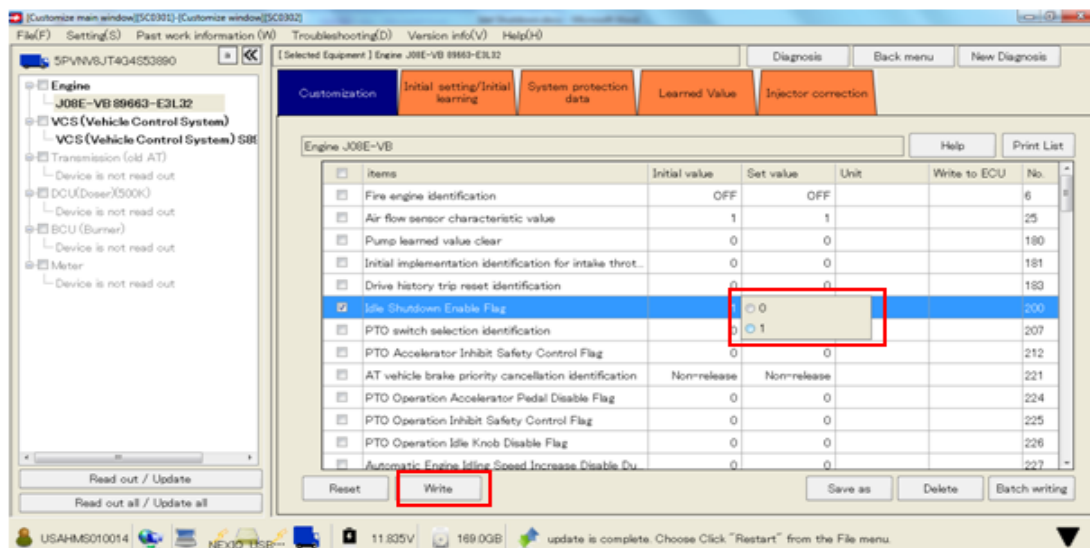
# TECH TIP

Group:	00-GENERAL
Bulletin No:	TT-14-013
Issue Date:	10-28-2015

6. Select “Engine” in the left pane and the “Customization” tab. Scroll down on the Customization list and select “Setting Time of Idle Shutdown No. 438”.



7. Click into the “Set Value” box and enter the desired number of minutes for the engine to idle before shutting down. Select “Write” when complete.

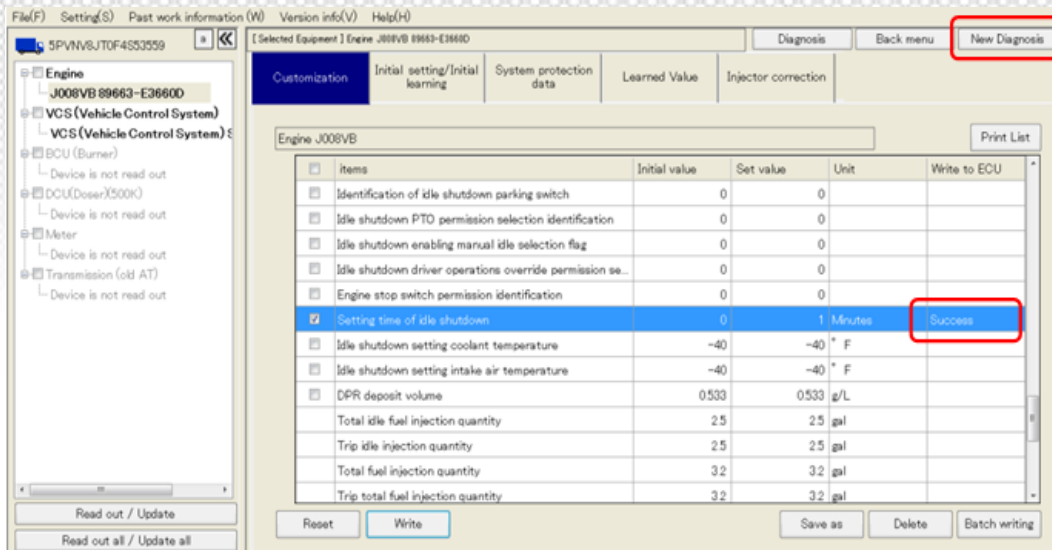


A Toyota Group Company

# TECH TIP

Group:	00-GENERAL
Bulletin No:	TT-14-013
Issue Date:	10-28-2015

8. Verify “Success” is indicated and minutes were changed to the desired number. Select “New Diagnosis” to save the DX information.



## Verify Operation:

Start the truck and verify that the idle timer is functioning correctly at the desired time. For the Idle stop to operate, the coolant temperature must be at least 120° F, the parking brake must be applied and the engine RPM must be at 750 before the timer will start.



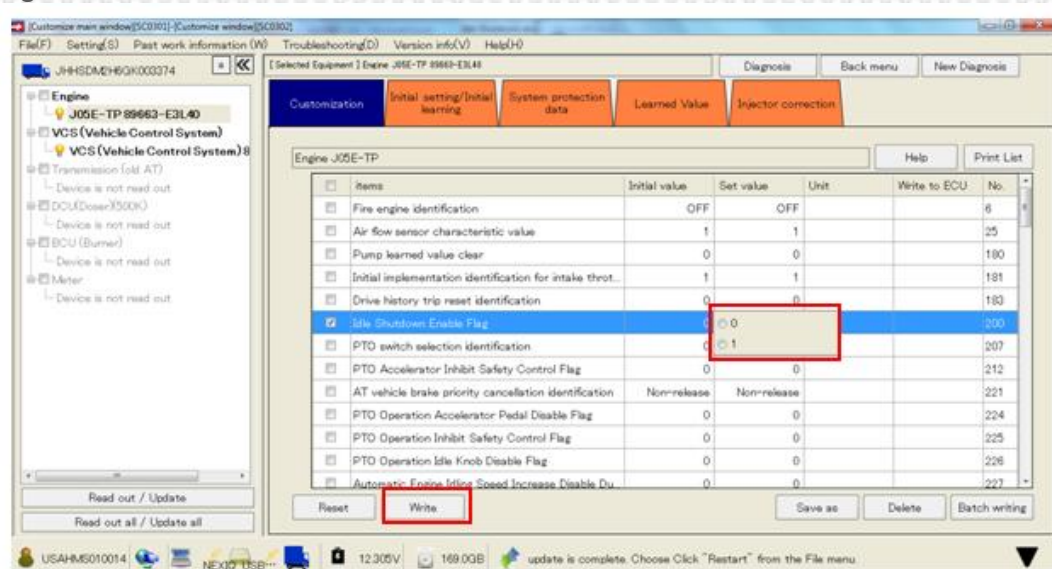
A Toyota Group Company

# TECH TIP

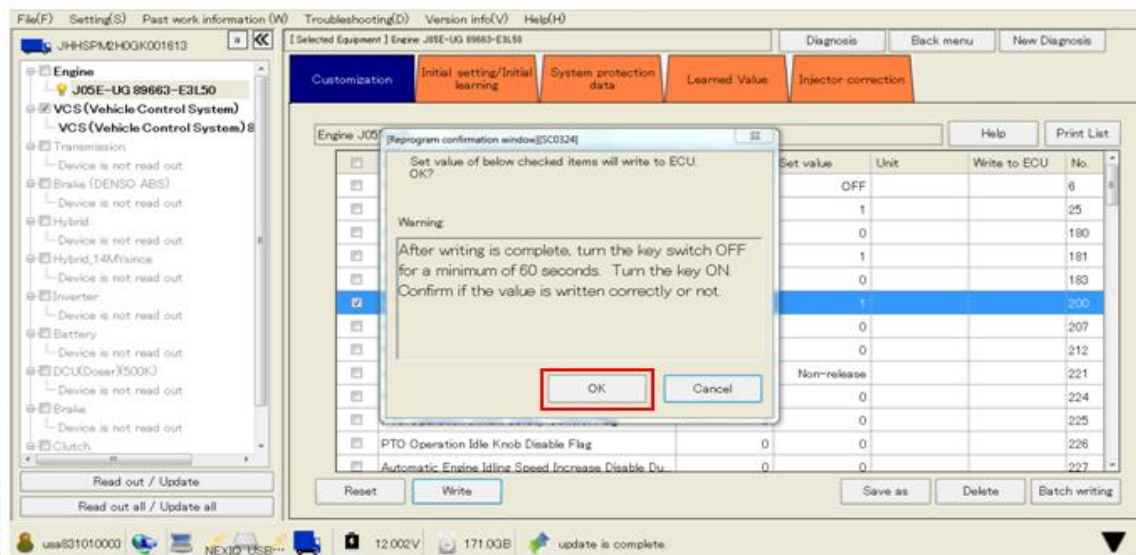
Group:	00-GENERAL
Bulletin No:	TT-14-013
Issue Date:	10-28-2015

## COE TRUCKS

1. Select “Diagnosis”, “300 Series”. Select the Engine and VCS modules to be read out. Verify that there are no Diagnostic Codes present. If there are DTC’s present, they must be addressed before continuing. Select the “Customization” menu to continue. Click in the “Set Value” column and select “On” in the pop up box. Select the “Write” button to change the setting.



2. Select “Ok” in the pop up prompts.

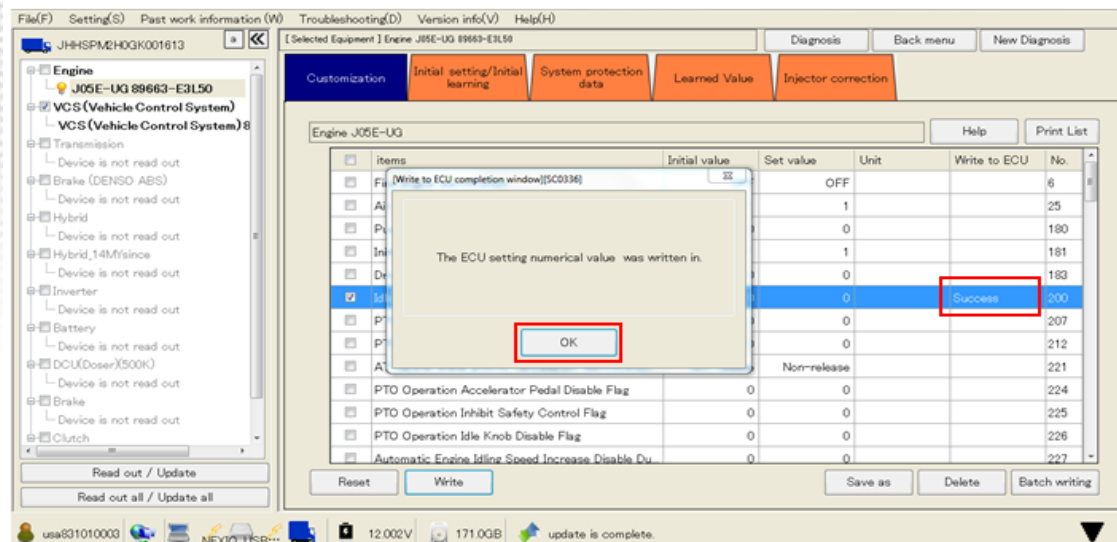


A Toyota Group Company

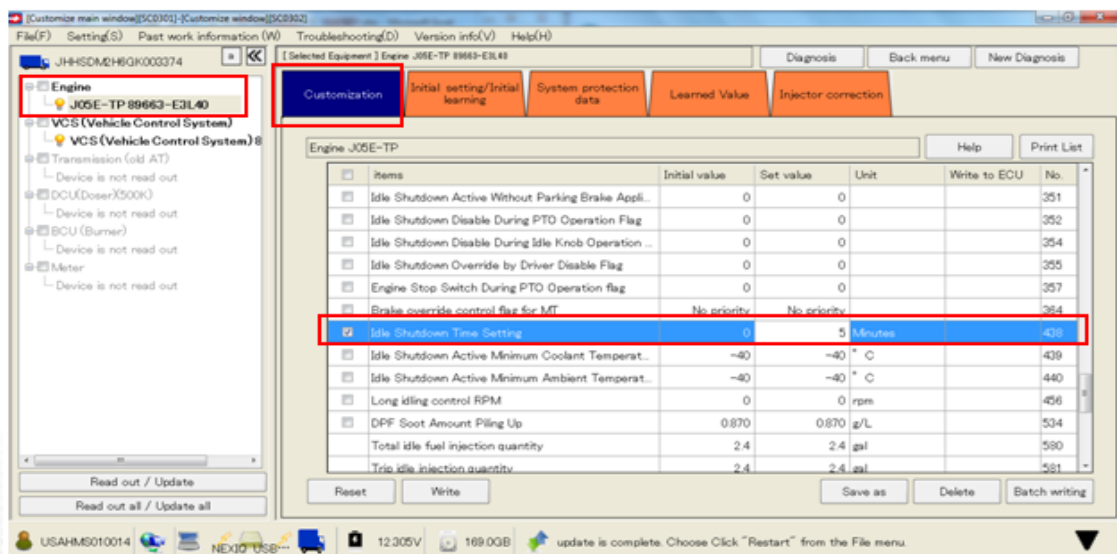
# TECH TIP

Group:	00-GENERAL
Bulletin No:	TT-14-013
Issue Date:	10-28-2015

3. Select “Ok” in the pop up prompts. Verify that the “Write to ECU” indicates “Success”.



4. Select “Engine” in the left pane and the “Customization” tab. Scroll down on the Customization list and select “Setting Time of Idle Shutdown No. 438”.

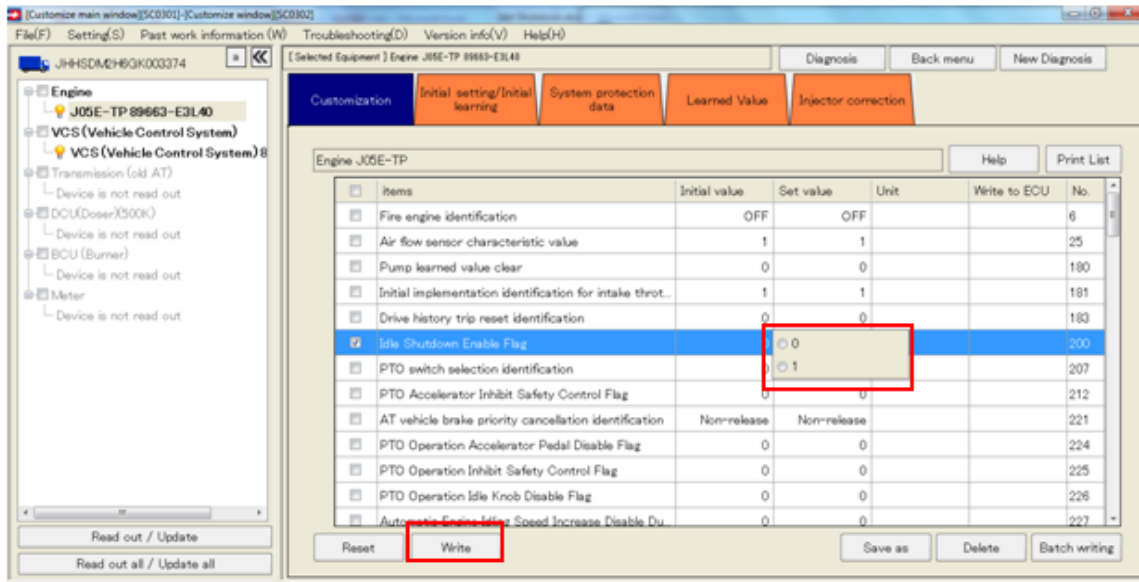


A Toyota Group Company

# TECH TIP

Group:	00-GENERAL
Bulletin No:	TT-14-013
Issue Date:	10-28-2015

5. Click into the “Set Value” box and enter the desired number of minutes for the engine to idle before shutting down. Select “Write” when complete.



6. Verify “Success” is indicated and minutes were changed to the desired number. Select “New Diagnosis” to save the DX information.

## Verify Operation:

Start the truck and verify that the idle timer is functioning correctly at the desired time. For the Idle stop to operate, the coolant temperature must be at least 123° F, the parking brake must be applied and the engine RPM must be at 750 before the timer will start.



A Toyota Group Company