

ACCESSORY INSTRUCTIONS

11MY-15MY CONVENTIONAL AIR HORN INSTALLATION

OVERVIEW

The following accessory instruction is for installing a Hino accessory air horn kit on a conventional truck.

NOTE: This procedure is provided as technical information and is not an authorization for a warranty repair.

SUBJECT VEHICLES

2011MY – 2015MY Hino Conventional Trucks

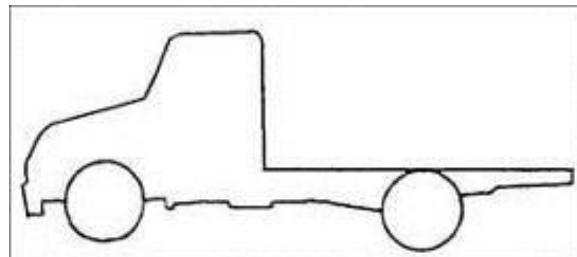
PARTS:

(HN001234042) AIR HORN KIT

PART NUMBER	DESCRIPTION	QUANTITY
S842804340	SWITCH ASSEMBLY GENERAL	1
S865001250	AIR HORN ASSEMBLY	1
47307E0060	CONNECTOR SUB ASSEMBLY	1
47307E0170	CONNECTOR 90 DEGREE ASSEMBLY	2
86591E0090	BRACKET-HORN	1
88630E0040	RELAY	1
SL15100809	BRACKET RETAINING NUTS	4
	¼ INCH AIR LINE	AS NEEDED

VEHICLE PREPARATION:

1. Park the vehicle on level ground.



Group:	0-GENERAL
Bulletin No.:	A-15-013
Issue Date:	05-12-2015

ACCESSORY INSTRUCTIONS

2. Confirm the engine is stopped, the ignition switch in the off (LOCK) position and the key is removed.



3. Apply the parking brake.



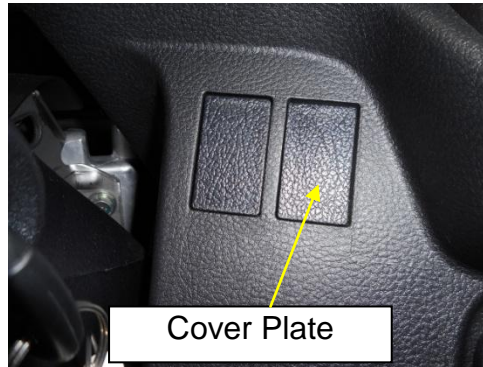
4. Chock the front wheels.



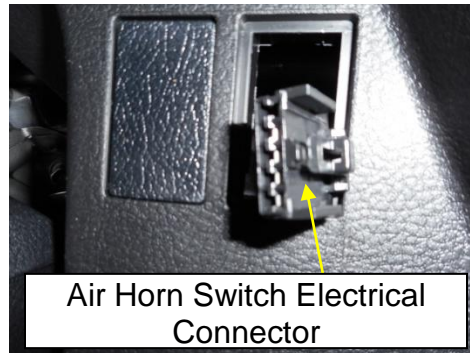
ACCESSORY INSTRUCTIONS

INSTALLATION PROCEDURE

1. Remove the switch cover plate on the dash as shown in the picture.



2. Locate the air horn switch electrical connector and pull it through.



3. Connect the air horn switch to the electrical connector.



Group:	0-GENERAL
Bulletin No.:	A-15-013
Issue Date:	05-12-2015

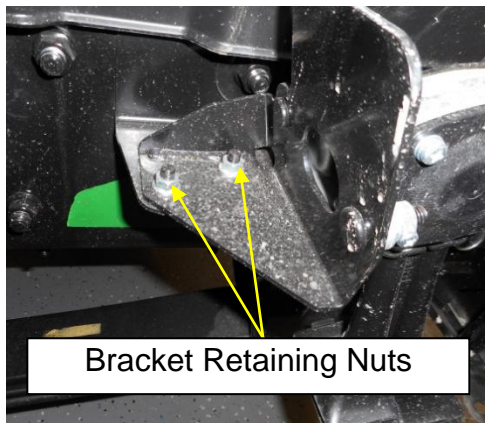
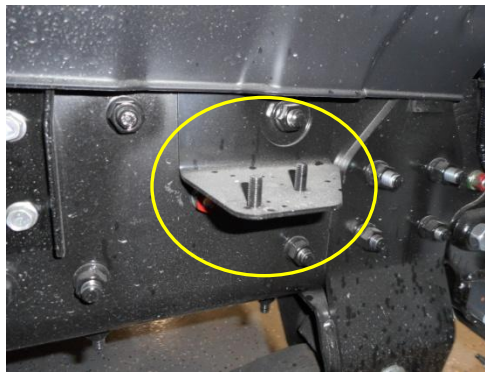
ACCESSORY INSTRUCTIONS

4. Install the air horn switch into the dash.



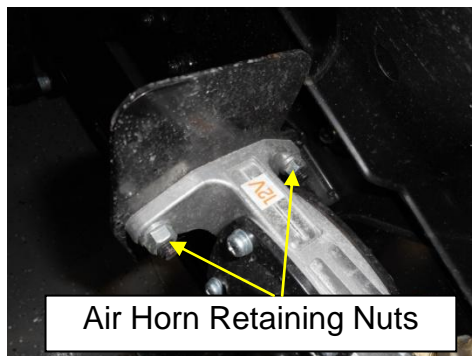
5. Install the air horn bracket and two retaining nuts in the passenger front fender well on the existing bracket.

Specified Torque: 18 lb-Ft (25 Nm)



6. Install the air horn facing down and the two retaining nuts.

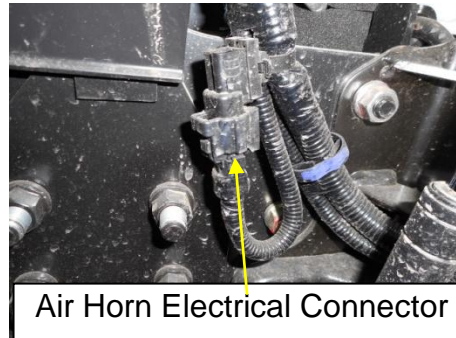
Specified Torque: 18 lb-Ft (25 Nm)



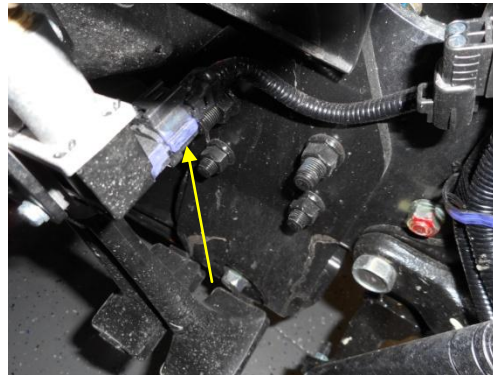
Group:	0-GENERAL
Bulletin No.:	A-15-013
Issue Date:	05-12-2015

ACCESSORY INSTRUCTIONS

7. Locate the air horn electrical connector and remove the connector insert.



8. Connect the air horn electrical connector to the air horn.

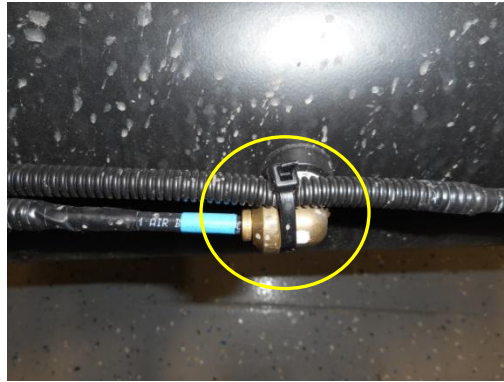


9. Locate a clean air source to install the elbow connector and ¼ inch air line.



ACCESSORY INSTRUCTIONS

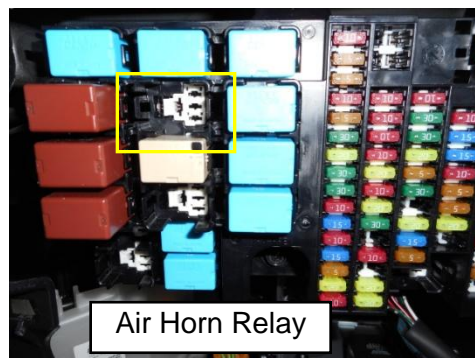
10. Install the elbow connector to the clean air source, connect the air line and run it along the frame to the air horn.



11. Install the elbow connector to the air horn and connect the air line.



12. Remove the fuse panel cover on the passenger side of the dash. Locate the empty slot as shown in the picture and install the air horn relay.



13. Reinstall and test the air horn for proper operation.