

TECHNICAL SERVICE BULLETIN

Group:	61-CAB AND BODY
Bulletin No:	SB-15-045
Issue Date:	11-19-2015
Reference:	HMM-151119-B1

Subject: SNOW PLOW HOOD CRACK REPAIR

RELEVANT MODEL: 11MY-16MY Hino Conventional Trucks (238, 258, 268 or 338) equipped with a snow plow specification stationary grille.

OVERVIEW:

Fiberglass repair methods have been made available to address hood crack concerns. In the event a subject vehicle experiences cracking of the hood near the hinges, this repair procedure should be used to address this condition. While these repair methods may be effective at repairing a hood that was damaged from impact, impact damage repair is not warrantable. Hoods should be inspected for impact damage prior to performing this procedure.

Note: This technical service bulletin is provided as technical information and is not authorization for a warrantable repair.

BEFORE YOU BEGIN:

- Read and understand all instructions and procedures before you begin the work.
- Read and follow all **WARNINGS** and **NOTICES** set forth in this publication. These alerts help to avoid damage to components, serious personal injury, or both.
- Park the vehicle on a flat, level and solid surface.
- Place the gear shift lever in "Neutral" or "Park".
- Apply the parking brake firmly and confirm parking brake activation.
- Turn off the engine and remove the key from the ignition switch.
- Always wear safety glasses or goggles to protect your eyes.
- A dust mask must be worn when sanding or grinding fiberglass material.
- Place wheel chocks in front of and behind all the wheels to prevent the vehicle from moving.

MATERIALS:

DESCRIPTION	QUANTITY
EPOXY BASED FIBERGLASS RESIN	As Needed
7.5 OUNCE FIBERGLASS CLOTH	38" X 18"



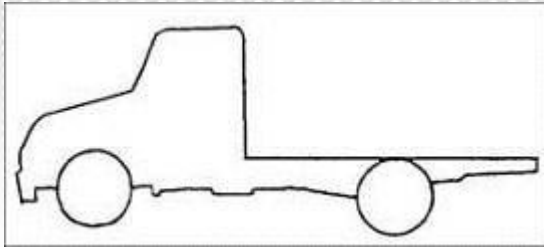
A Toyota Group Company

TECHNICAL SERVICE BULLETIN

Group:	61-CAB AND BODY
Bulletin No:	SB-15-045
Issue Date:	11-19-2015
Reference:	HMM-151119-B1

VEHICLE PREPARATION:

1. Park the vehicle on a flat, level and solid surface.



2. Confirm the engine is stopped, the ignition switch is in the off (LOCK) position, and the key is removed.



3. Apply the parking brake.



A Toyota Group Company

TECHNICAL SERVICE BULLETIN

Group:	61-CAB AND BODY
Bulletin No:	SB-15-045
Issue Date:	11-19-2015
Reference:	HMM-151119-B1

4. Chock all of the wheels.



REPAIR PROCEDURE:

1. The following photographs are examples of cracking that you may see around the hinge plate of a snow plow hood that can be repaired.



2. Following the cab section of the Chassis Workshop Manual, remove the grille from the hood. Retain the grille for reassembly.

NOTICE: Use only hand tools when removing the hood grille to prevent damage.



A Toyota Group Company

TECHNICAL SERVICE BULLETIN

Group:	61-CAB AND BODY
Bulletin No:	SB-15-045
Issue Date:	11-19-2015
Reference:	HMM-151119-B1

3. Following the cab section of the Chassis Workshop Manual, remove the hood from the vehicle and place in the work area. Position the hood upside down to access the hinge areas. Ensure the hood surface is protected from damage.

WARNING: NEVER work under the hood unless the hood is properly supported. Serious personal injury can occur.



4. Remove the hinges, hinge plates, and reinforcement bar from the hood by removing the four retaining bolts on each side. Retain these parts for reassembly.



A Toyota Group Company

TECHNICAL SERVICE BULLETIN

Group:	61-CAB AND BODY
Bulletin No:	SB-15-045
Issue Date:	11-19-2015
Reference:	HMM-151119-B1

5. Clean both hood hinge mounting surfaces using surface prep solvent and a lint free rag. As stated below, fiberglass will be applied to both hinge surfaces, even if only one side is cracked.

NOTICE: Failure to remove contaminants prior to grinding and sanding the material can affect adhesion.



6. Using an angle grinder or die grinder, chamfer the hood material on both sides of the crack. If the material is splintered and loose, remove as much of this loose material as possible to ensure a solid surface for bonding the new fiberglass. Refer to the examples in the photographs below.

WARNING: ALWAYS wear eye protection, a face mask, gloves and protective clothing when grinding, drilling, and sanding fiberglass, epoxy resin and adhesive materials. Fiberglass materials may cause mouth, nose, throat, skin and eye irritation. Epoxy resin and adhesive materials may cause skin irritation and eye irritation.

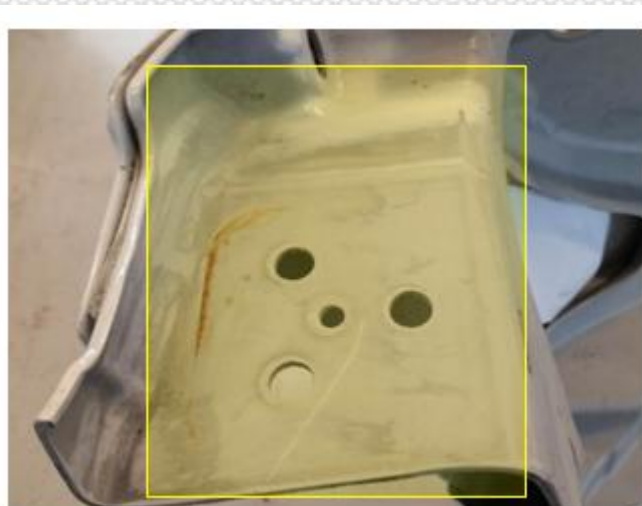


A Toyota Group Company

TECHNICAL SERVICE BULLETIN

Group:	61-CAB AND BODY
Bulletin No:	SB-15-045
Issue Date:	11-19-2015
Reference:	HMM-151119-B1

7. Using 80 grit sandpaper, deglaze the highlighted area on the underside of both hood hinge mounting surfaces. Make certain this extends two inches beyond any cracks. Remove sanding dust with a clean lint free rag.



8. Cut four layers of fiberglass cloth for each hood hinge mounting surface. These should cover the entire hood hinge mounting surface and any cracks that are present.



A Toyota Group Company

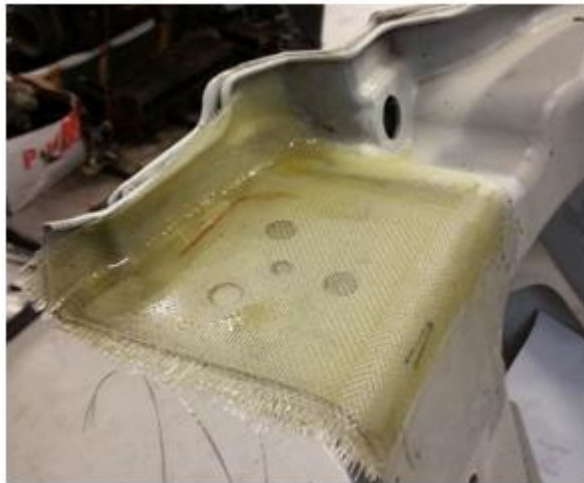
TECHNICAL SERVICE BULLETIN

Group:	61-CAB AND BODY
Bulletin No:	SB-15-045
Issue Date:	11-19-2015
Reference:	HMM-151119-B1

9. Always heed the manufacturer's instructions and warnings in mixing the fiberglass resin. Before positioning the first layer of fiberglass cloth, apply a coat of the mixed resin, using a brush.



10. Ensure no air pockets are present under the first layer of fiberglass cloth before applying additional resin and the next piece of fiberglass cloth. Repeat this process for each layer. Ensure resin is applied over the fourth and final layer. Allow the resin to cure. Repeat for the other hood hinge mounting surface.



A Toyota Group Company

TECHNICAL SERVICE BULLETIN

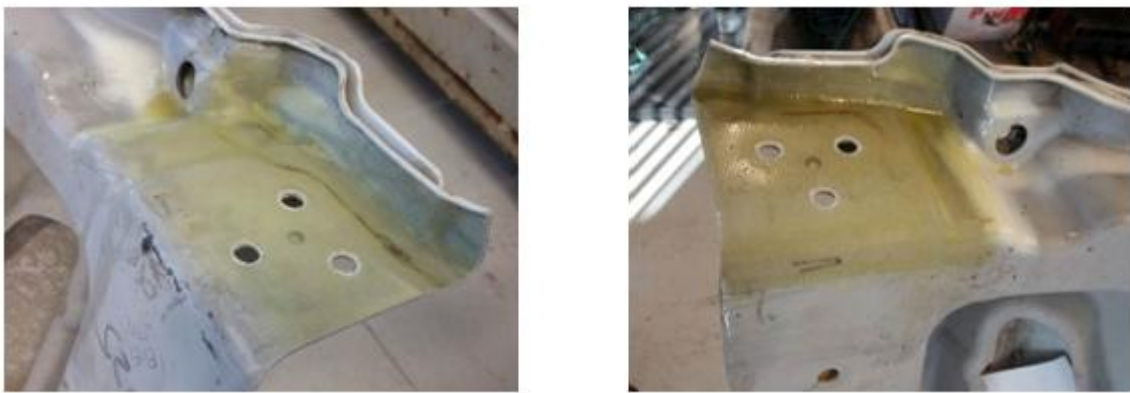
Group:	61-CAB AND BODY
Bulletin No:	SB-15-045
Issue Date:	11-19-2015
Reference:	HMM-151119-B1

11. After the fiberglass has cured, rotate the hood right side up and perform steps 5 through 10 on the top side of the hood hinge mounting surface. Grinding the cracked area referenced in step 6 is not necessary.



12. Once the fiberglass has cured, trim or sand the excess as needed. Drill out the hinge plate mounting holes on the hood using a ½ inch drill bit.

WARNING: ALWAYS wear eye protection, a face mask, gloves and protective clothing when grinding, drilling, and sanding fiberglass, epoxy resin and adhesive materials. Fiberglass materials may cause mouth, nose, throat, skin and eye irritation. Epoxy resin and adhesive materials may cause skin irritation and eye irritation.



A Toyota Group Company

TECHNICAL SERVICE BULLETIN

Group:	61-CAB AND BODY
Bulletin No:	SB-15-045
Issue Date:	11-19-2015
Reference:	HMM-151119-B1

13. Reinstall the hood hinge plates, hood hinges, and reinforcement bar. Torque the fasteners to the specified torque.

Specified Torque: 32 lb-ft(43 Nm)



14. Following the Cab section of the Chassis Workshop Manual, reinstall the hood on the vehicle.

WARNING: NEVER work under the hood unless the hood is properly supported. Serious personal injury can occur.



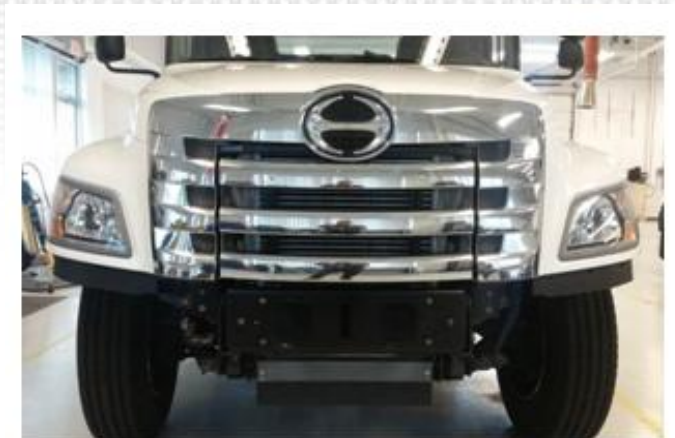
A Toyota Group Company

TECHNICAL SERVICE BULLETIN

Group:	61-CAB AND BODY
Bulletin No:	SB-15-045
Issue Date:	11-19-2015
Reference:	HMM-151119-B1

15. Following the Cab section of the Chassis Workshop Manual, reinstall the grille to the hood.

NOTICE: Only use hand tools when installing the grille and ensure the fasteners are torqued to the specification listed on the grille label. If a new hood grille is being installed, please reference **SB-14-020**.



Note: This technical service bulletin is provided as technical information and is not authorization for a warrantable repair.

FINAL INSPECTION PROCEDURE:

1. To complete this Technical Service Bulletin, review the bulletin and confirm the following:
Any cracks in the hood material have been repaired
All fasteners are tightened to the specified torque.
Hood latches are engaged.

CLAIM APPLICATION:

Labor Charge: 4.2 Hours

Warranty Code: 71299

Trouble Code: 51

Operation Code: 71250AOT

Part Number: 53310-E0115

REFERENCE:

US Composites Fiberglass – www.uscomposites.com



A Toyota Group Company