

Group:	Service Manual Update
Bulletin No.:	SB-15-007
Issue Date:	1/9/2015

SERVICE INFORMATION BULLETIN

**Subject: CORRECTION OF WORKSHOP MANUAL FOR HINO 300 SERIES
(ADDITION OF SPEEDOMETER DRIVEN GEAR AND SPEEDOMETER DRIVEN HOLE COVER)**

The following is to inform you of the above caption. This service data should be attached to the relevant pages of the workshop manuals for maintenance and to use for servicing.

RELEVANT MODEL:

HINO 300 Series with TRANSMISSION (MZZ6F) from June 2011 production

CONTENTS:

Addition of speedometer driven gear and speedometer driven hole cover.

RELEVANT MANUALS:

LANGUAGE	MANUAL No.	CHAPTER	PAGE No.
ENGLISH	S1-LXZE05A T/M	TRANSMISSION MECHANICAL	7-3 to 7-4
ENGLISH	S1-LXZE05B T/M	TRANSMISSION MECHANICAL	7-7, 7-27
ENGLISH	S1-LXZE05F T/M	TRANSMISSION MECHANICAL	7-7 to 7-27
ENGLISH	S1-LXJE07A	TRANSMISSION MECHANICAL	4-48, 4-68
SPANISH	S1-LXZS05A T/M	TRANSMISSION MECHANICAL	From 7-3 to 7-4
SPANISH	S1-LXZS05B T/M	TRANSMISSION MECHANICAL	7-7, 7-27
FRENCH	S1-LXZF05A T/M	TRANSMISSION MECHANICAL	From 7-3 to 7-4
FRENCH	S1-LXZF05B T/M	TRANSMISSION MECHANICAL	7-7, 7-27

SERVICE INFORMATION BULLETIN

OVERHAUL

EN01G04255060402035002

REMOVING THE TRANSMISSION CASE ASSEMBLY

⚠ CAUTION

- The transmission case and clutch housing are made of aluminum. Exercise extreme care not to cause damage to them. Damage to the rib, in particular, results in the deterioration of the strength of the case. It is, therefore, necessary to pay more attention to it. In addition, when handling heavy objects, such as cases and gears, exercise care not to get injured.

ADD

- If the transmission assembly is replaced, remove the speedometer driven gear or the speedometer driven hole cover from the old transmission assembly and install them to the new one.
- Be careful not to forget installation of the speedometer driven gear or the speedometer driven hole cover, because it may result in oil leakage.
Oil leakage will cause damage or seizure of the transmission assembly.

1. REMOVING THE FILLER PLUG

- (1) Remove the filler plug and O-ring from the transmission case.

2. REMOVING THE DRAIN PLUG

- (1) Remove the drain plug and O-ring from the transmission case to drain transmission oil.

NOTICE

When draining transmission oil, check for oil level, metallic fragments, and foreign matter.

ADD

3. REMOVING THE SPEEDOMETER DRIVEN GEAR

- (1) Loosen the bolt and plate to remove the speedometer driven gear.

Identification groove	Number of teeth	Identification paint
Left side 2	14 / 4	White

⚠ CAUTION

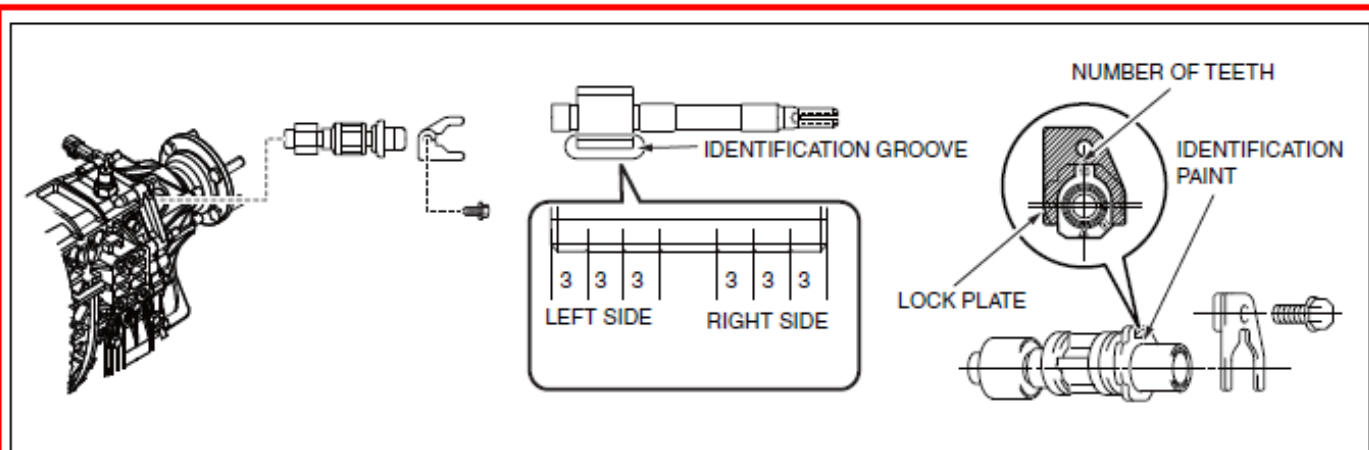
- If the transmission assembly is replaced, remove the speedometer driven gear from the old transmission assembly and install it to the new one.
- Be careful not to forget installation of the speedometer driven gear, because it may result in oil leakage.
Oil leakage will cause damage or seizure of the transmission assembly.

NOTICE

- Installing the speedometer driven gear into the manual transmission improperly will result in inaccurate readings of the speedometer. Check the painted number of teeth of the speedometer driven gear before reinstalling.
- If the identification paint cannot be identified, refer to the identification groove on the speedometer driven gear and the table above to determine the number of teeth before reinstalling.

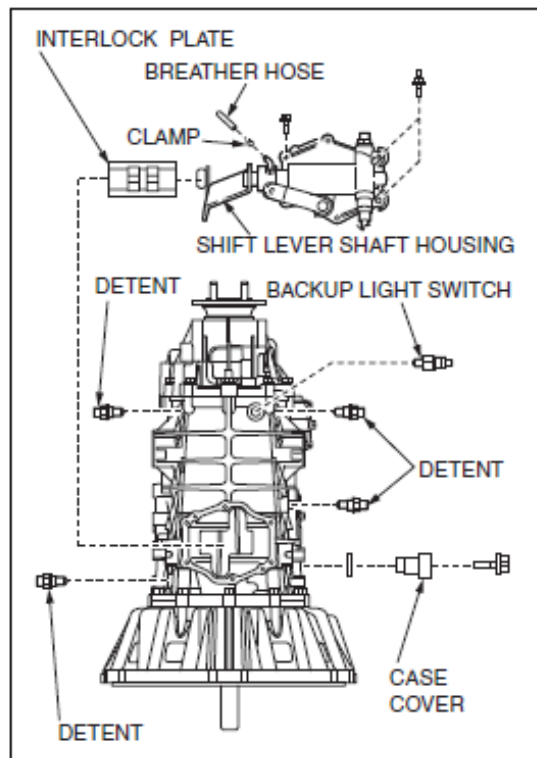
SERVICE INFORMATION BULLETIN

ADD



SHTS042550600005

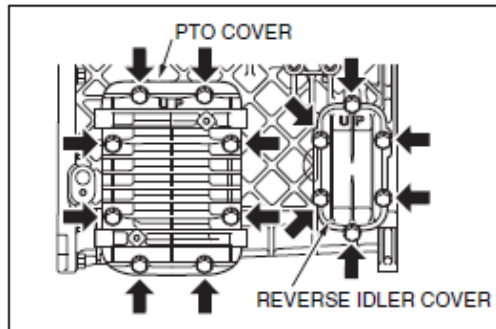
4. **REMOVING THE SPEEDOMETER DRIVEN HOLE COVER**
(When the vehicle is not equipped with a speedometer driven gear.)
 - (1) Remove the speedometer driven hole cover from the transmission assembly.



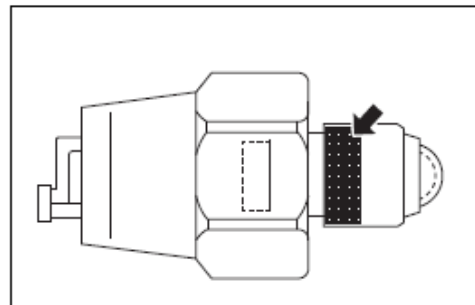
SHTS042550600005

5. **REMOVING THE BACKUP LIGHT SWITCH**
 - (1) Remove the backup light switch from the transmission case.
6. **REMOVING THE DETENTS**
 - (1) Remove the 4 detents from the transmission case.
7. **REMOVING THE CASE COVER**
 - (1) Unfasten the bolt to remove the case cover from the transmission case.
 - (2) Remove the O-ring from the case cover.
8. **REMOVING THE SHIFT LEVER SHAFT HOUSING**
 - (1) Unfasten the clamp to remove the breather hose from the shift lever shaft housing.
 - (2) Unfasten the 6 bolts to remove the shift lever shaft housing and interlock plate from the transmission case.

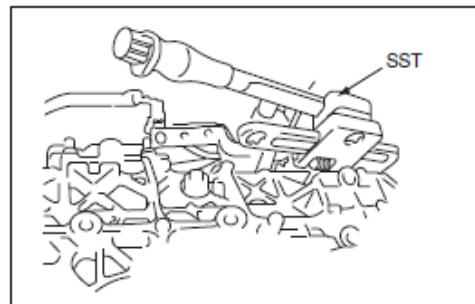
SERVICE INFORMATION BULLETIN



SHTS042550600007



SHTS0425506000062



SHTS0425506000063

9. REMOVING THE PTO COVER (WITHOUT PTO)

- (1) Unfasten the 8 bolts to remove the PTO cover and gasket from the transmission case.

10. REMOVING THE REVERSE IDLER COVER

- (1) Unfasten the 6 bolts to remove the reverse idler cover from the transmission case.

29. MOUNTING THE BACKUP LIGHT SWITCH

- (1) Clean and degrease the backup light switch thread and screw hole.
- (2) Apply LOCTITE No.242 or equivalent to the backup light switch thread.

NOTICE

- Thoroughly remove the old sealant on the backup light switch thread.
- Thoroughly remove the old sealant on the transmission case thread.

- (3) Using the SST, mount the backup light switch to the transmission case.

SST: 09922-10010
Variable open wrench

Tightening Torque:

39 N·m {398 kgf·cm, 29 lbf·ft}

32 N·m {326 kgf·cm, 24 lbf·ft}

[When the SST and torque wrench (180 mm {7.087 in.}) are used.]

CAUTION

Do not use the SST the other way around.

NOTICE

- This torque value is valid when the SST and torque wrench are parallel to each other.
- Set the SST and torque wrench in a straight line.
- The effective length of the SST is 43 mm {1.693 in.} and that of the torque wrench is 180 mm {7.087 in.}.
- If different tools are used, calculate the tightening torque accordingly.

ADD

30. INSTALLING THE SPEEDOMETER DRIVEN HOLE COVER

- (1) Install the speedometer driven hole cover to the transmission assembly.

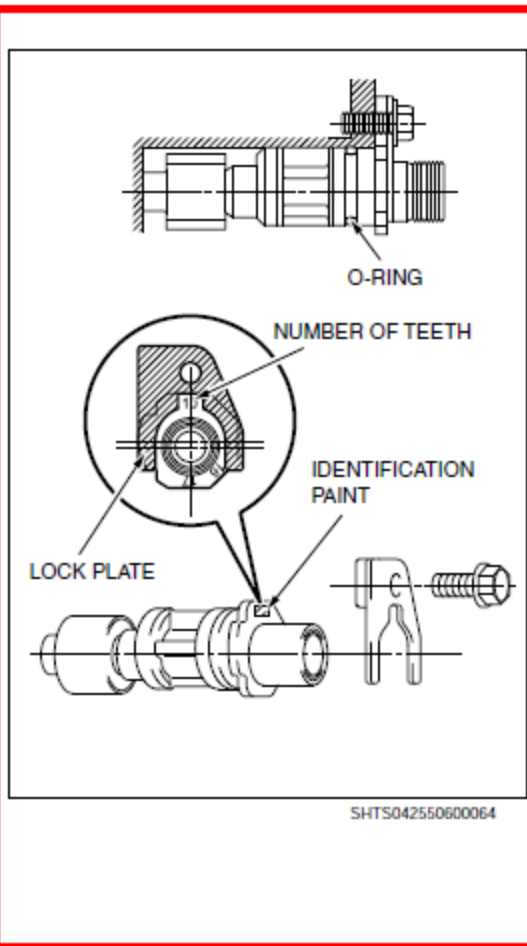
Tightening Torque:

19 N·m {194 kgf·cm, 14 lbf·ft}

NOTICE

Apply engine oil (SAE 5W-30) to the O-ring, and install the cover and O-ring to the transmission case.

SERVICE INFORMATION BULLETIN



31. MOUNTING THE SPEEDOMETER DRIVEN GEAR

- (1) Install the bolt and plate, and mount the speedometer driven gear.

Tightening Torque:
19 N·m {194 kgf·cm, 14 lbf·ft}

Identification groove	Number of teeth	Identification paint
Left side 2	14 / 4	White

⚠ CAUTION

- If the transmission assembly is replaced, remove the speedometer driven gear from the old transmission assembly and install it to the new one.
- Be careful not to forget installation of the speedometer driven gear, because it may result in oil leakage. Oil leakage will cause damage or seizure of the transmission assembly.

NOTICE

- Installing the speedometer driven gear into the manual transmission improperly will result in inaccurate readings of the speedometer. Check the painted number of teeth of the speedometer driven gear before reinstalling.
- If the identification paint cannot be identified, refer to the identification groove on the speedometer driven gear and the table above to determine the number of teeth before reinstalling.

ADD

32. MOUNTING THE DRAIN PLUG

- (1) Remove the iron powder on the drain plug.
- (2) Apply engine oil to the new O-ring, and mount the drain plug to the rear case via the O-ring.

Tightening Torque:
39 N·m {398 kgf·cm, 29 lbf·ft}

33. MOUNTING THE FILLER PLUG

- (1) Apply engine oil to the new O-ring, and mount the filler plug to the transmission case via the O-ring.

Tightening Torque:
39 N·m {398 kgf·cm, 29 lbf·ft}