

SERVICE INFORMATION BULLETIN

TITLE:	Flat Battery Entry Procedure
DOCUMENT NUMBER:	11 M087
AFFECTED VEHICLES:	McLaren 12C, 650S, 625C Coupe and Spider
SITUATION:	Engineering at McLaren Automotive would like to inform the dealer network how to gain entry into a vehicle that has a flat 12 volt battery. When the 12 volt battery goes into Under Voltage Protection (UVP) both door glasses should go into short short drop mode which then allows you open the left door with the mechanical key.
PROCEDURE:	Please follow the procedure outlined in this document below to confirm if short short drop function has functioned.

1. Before attempting to open the left door, the door glass must be inspected to confirm the door glass has gone into short short drop mode. Look at the pictures below to see the difference between door glass that has and has not gone into short short drop mode.

The door glass has gone into short short drop mode (1).



The door glass **has not** gone into short shot drop mode (2).



2. If the door glass has gone into short short drop mode then proceed and open the left door using the mechanical key, but ensure you have assistance to help with the release of the door.

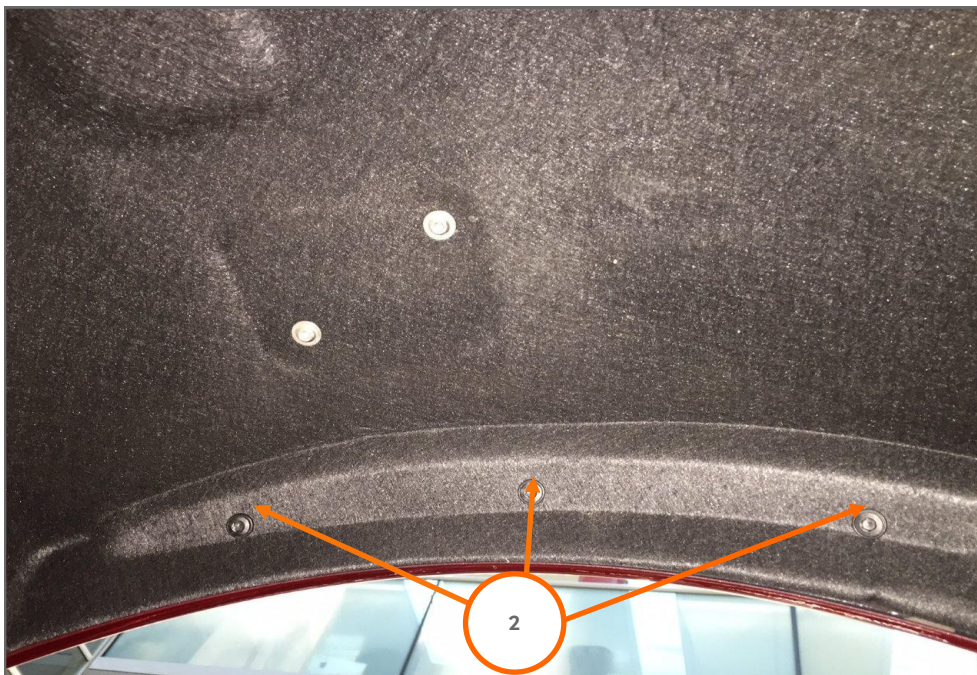
3. If the door glass has not gone into short short drop mode then proceed to the 12 volt battery access procedure.

12 volt battery access procedure

1. Position the left wheel on a lock as below (1).



2. Remove the 3 T30 torx fixings to allow the wheel arch liner to be moved allow access to the luggage compartment manual release cable (2).



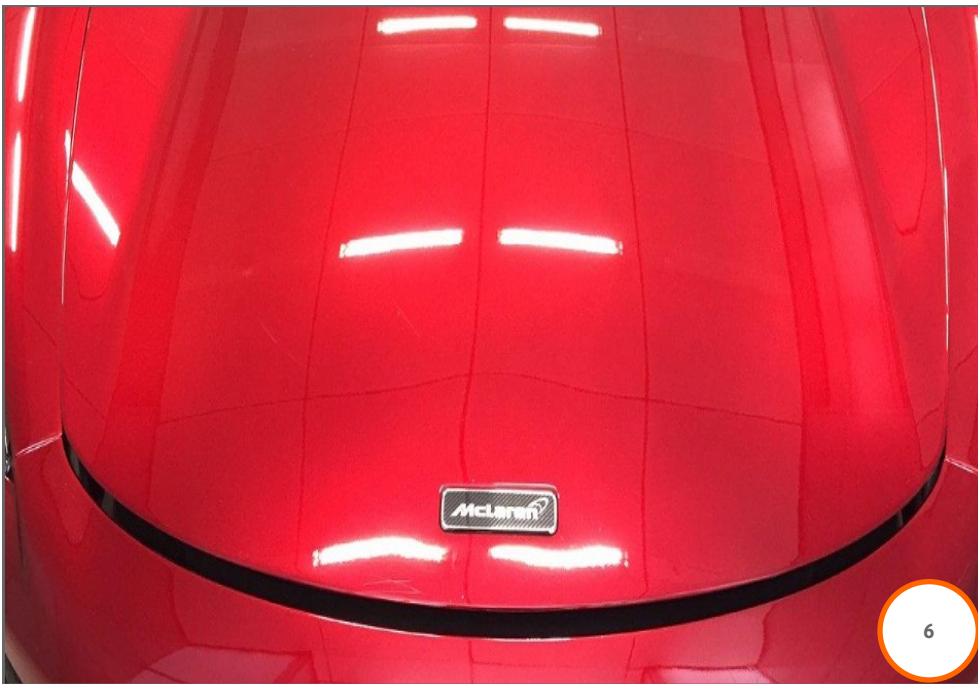
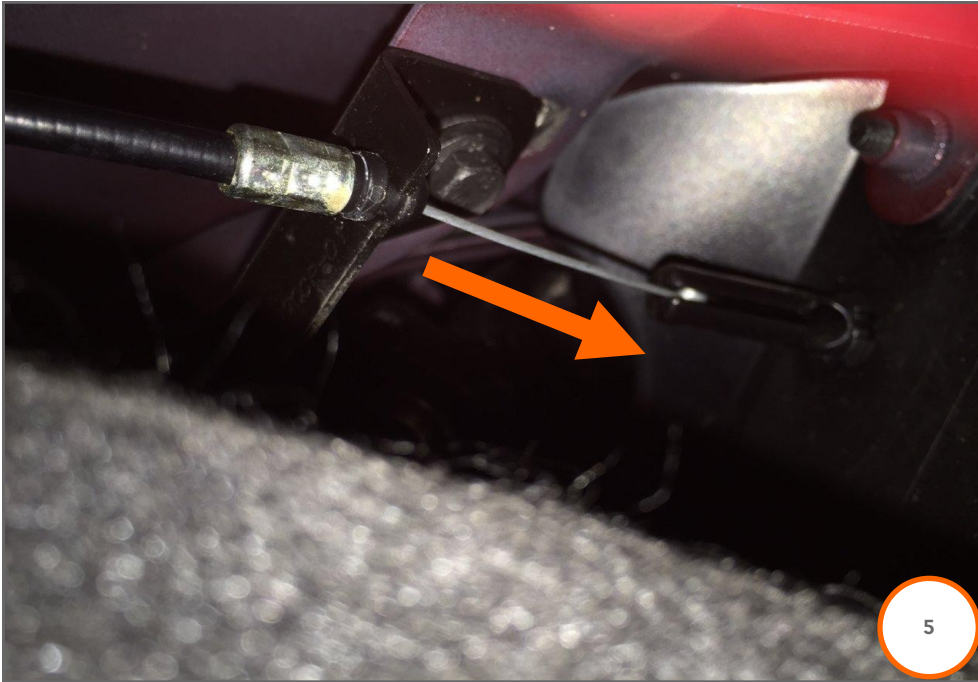
3. Insert a plastic trim tool to allow the wheel arch liner to be moved (3).



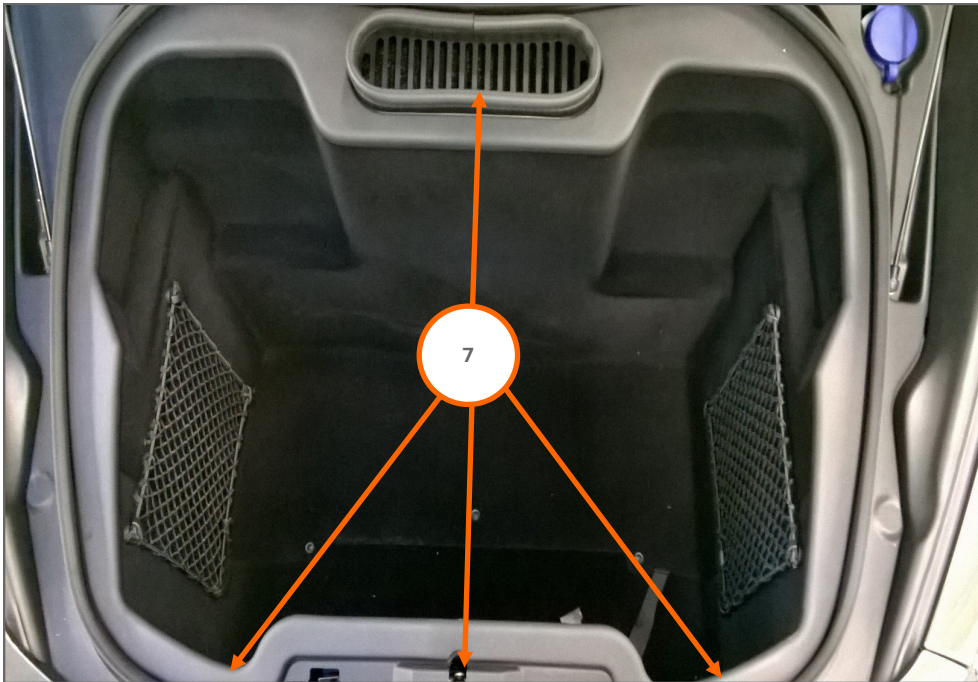
4. Follow the wheel arch liner round so you have the following gap as below (4).



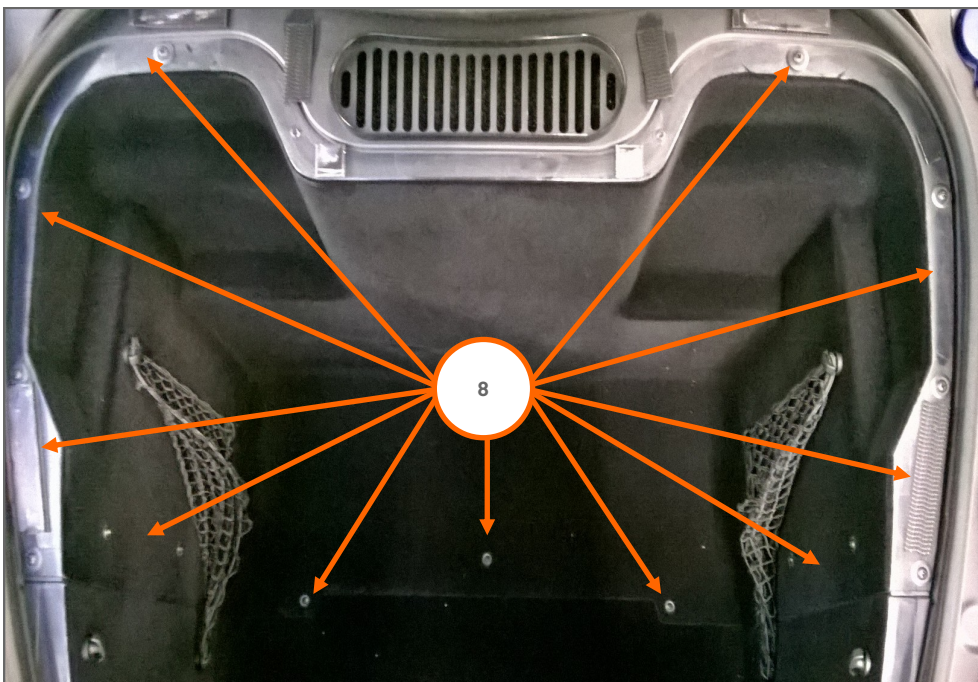
5. Locate the luggage compartment manual release cable . Pull on inner cable (5) to open the luggage compartment (6).



6. Open the luggage compartment to gain access to the luggage bin rear fixings .
7. Remove the luggage bin contents and carpet mat.
8. Remove the five front fixings and seal, this will allow the luggage bin finisher to be removed (7).



9. Remove the fixings (8).



10. Remove the luggage bin rear to gain access to the 12 volt battery.

Care Point: Ensure you support the door opening and carefully check the door glass does not drop when the door opens.

11. Connect an external power source to the 12 volt battery and wait 5 minutes and then open the left door via the touch sensor or the door open button .

WARRANTY INFORMATION

DESCRIPTION	RESOLUTION CODE	TOTAL REPAIR TIME
N/A	N/A	N/A

PARTS INFORMATION

DESCRIPTION	PART NUMBER	QUANTITY	ORDER PROCESS
N/A	N/A	N/A	N/A