

Technical product information

Topic	Mulsanne front anti roll bar - contact with lower wishbones
Market area	Bentley: worldwide (2WBE)
Brand	Bentley
Transaction No.	2037973/2
Level	EH
Status	Approval
Release date	

New customer code

Object of complaint	Complaint type	Position
Running gear -> Self-levelling suspension, pitch and roll compensation	functionality	
Running gear -> Self-levelling suspension, pitch and roll compensation	Noise, vibration	
Running gear -> Shock absorber/suspension control	Noise, vibration	
Running gear -> Shock absorber/suspension control	functionality	
Running gear -> Self-levelling suspension, pitch and roll compensation	dimensional accuracy	

New workshop code

Object of complaint	Complaint type	Position
Running gear -> Running gear, springs, shock absorbers -> Stabiliser bar	Noise, vibration -> noise	front

Vehicle data

All Mulsanne

Sales types

Type	MY	Brand	Designation	Engine code	Gearbox code	Final drive code
3Y2*	2011	E		*	*	*
3Y2*	2012	E		*	*	*
3Y2*	2013	E		*	*	*
3Y2*	2014	E		*	*	*
3Y2*	2015	E		*	*	*
3Y2*	2016	E		*	*	*

Chassis numbers

Manufacturer	Filler	Type	Filler	MY	Factory	From	To	Prod from	Prod to
SCB	*	3Y	*	*	C	000001	018999		
SCB	*	ZH	*	*	C	000001	018999		
SCB	*	ZH	*	*	C	019680	019941		
SCB	*	3Y	*	*	C	019680	019941		
SCB	*	3Y	*	*	C	001000	001059		
SCB	*	ZH	*	*	C	001000	001059		
SCB	*	ZH	*	*	C	001060	001258		
SCB	*	3Y	*	*	C	001060	001258		
SCB	*	3Y	*	*	C	001259	001578		
SCB	*	ZH	*	*	C	001259	001578		

Documents

Document name
master.xml

-

Customer statement / workshop findings

Knocking noise from the front suspension on rough/uneven road surfaces

Technical background

The ends of the original specification front anti roll bar in some cases can contact the front face of the lower right and lower left hand front wishbones.

New specification front anti roll bar and anti-roll bar links have now been developed

- Referring to Figure 1 (Point A) due to the revised design of the anti-roll bar, the ends will not contact the front faces of the front lower wishbones (Point B)

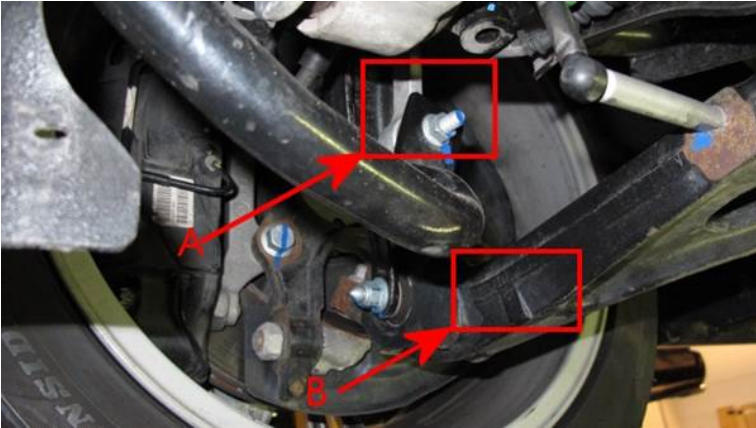


Figure 1

Production change

From VIN SCBBG7ZH3GC001578 the latest specification front anti roll bar and anti-roll bar links are fitted at the time of production

Measure

1. Check the end of the front anti roll bar and the front face of the lower wishbone for any contact witness marks (Figure 2) and repeat on the opposite side

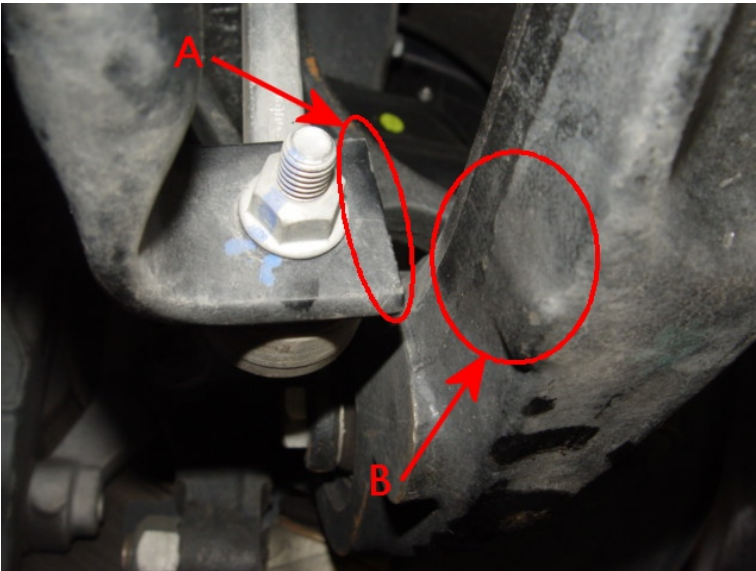


Figure 2

2. Check for witness marks on the lower knuckle of the anti-roll bar link (Figure 3) and repeat on the opposite side

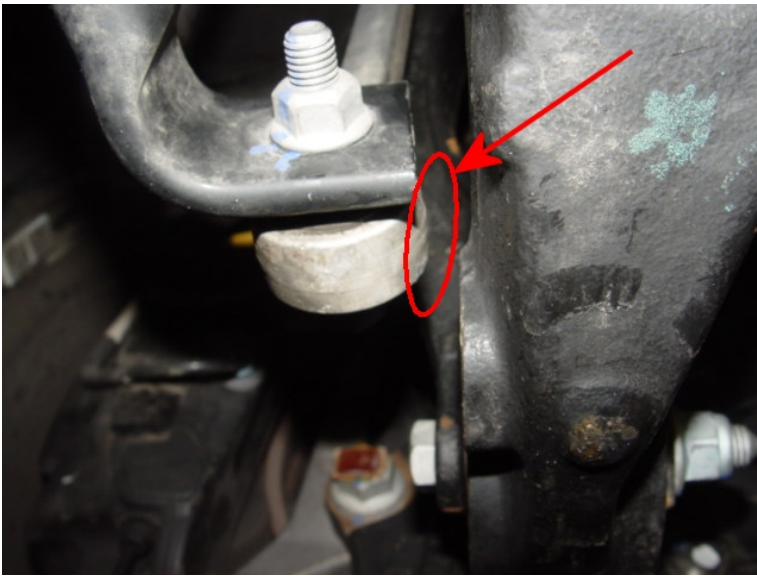


Figure 3

NOTE: Should witness marks be evident on the ends of the front anti roll bar, front lower wishbones or front roll bar link knuckles please go to procedure 3 of this TPI.

Should no witness marks be evident on any of the afore mentioned components this TPI does not apply

3. Replace the front anti roll bar and both front anti roll bar links – Refer to workshop manual Rep.Gr 40 Anti-Roll Bar and Links – To Remove and fit



Do Not mix the latest specification front anti-roll bar or anti roll bar drop links with the original specification parts

Warranty accounting instructions

Time to replace the front anti-roll bar

Warranty Type 910 or 110
 Labour Operation Code 40 77 55 00
 Damage Service Number 40 77
 Damage Code 00 10
 Time 60 time units

Time to replace the drop links

Warranty Type 910 or 110
 Labour Operation Code 40 78 19 00
 Damage Service Number 40 78
 Damage Code 00 10
 Location 001
 Time 10 time units

Parts information

Part Number	Description	Quantity
3Y0 411 305D	Front Anti-roll bar	1
4H0 411 317C	Anti-roll bar link	2
8K0 411 327B	Bush	2
N911 422 01	Collared bolt	4
N104 253 02	Bolt	2
N102 861 10	Nut	2
N106 999 01	Bolt	2