



Technical Service Bulletin

SUBJECT:		No: TSB-15-42A-001	
LOWER LIFTGATE PANEL RUST		DATE: August, 2015	
		MODEL: 2011 – 2012 Outlander Sport/RVR	
CIRCULATE TO:	<input type="checkbox"/> GENERAL MANAGER	<input checked="" type="checkbox"/> PARTS MANAGER	<input checked="" type="checkbox"/> TECHNICIAN
<input checked="" type="checkbox"/> SERVICE ADVISOR	<input checked="" type="checkbox"/> SERVICE MANAGER	<input checked="" type="checkbox"/> WARRANTY PROCESSOR	<input type="checkbox"/> SALES MANAGER

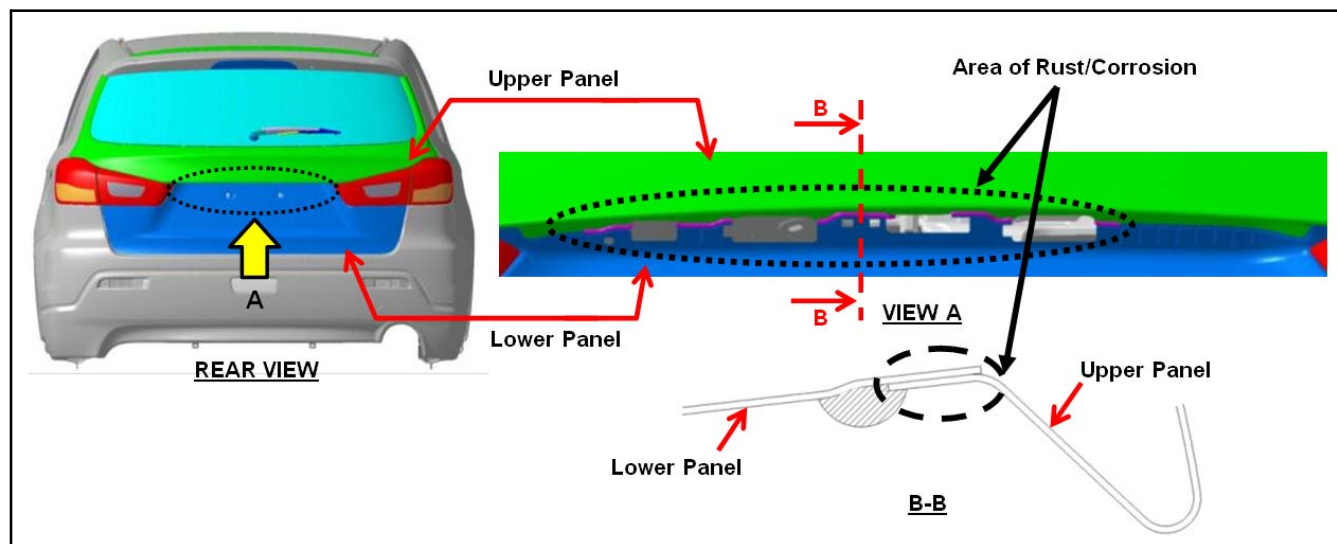
PURPOSE

Customers of some affected vehicles may report rust or corrosion on the rear liftgate in the following areas:

- Section where liftgate upper panel meets the lower panel.
- Edge of the liftgate open switch on the lock release handle.

Rust between the upper and lower panels may be due to uneven sealant application that allows water to enter between the packing and the body sealant. Rust near the liftgate open switch may be due to inadequate clearance between the switch and upper panel, causing the edge of the switch to scratch the coating of the upper panel, leading to water intrusion and rust.

This TSB instructs dealers to repair any rusted areas, add sufficient sealant to prevent rust, repaint repaired areas, then apply protective film on the open switch area.

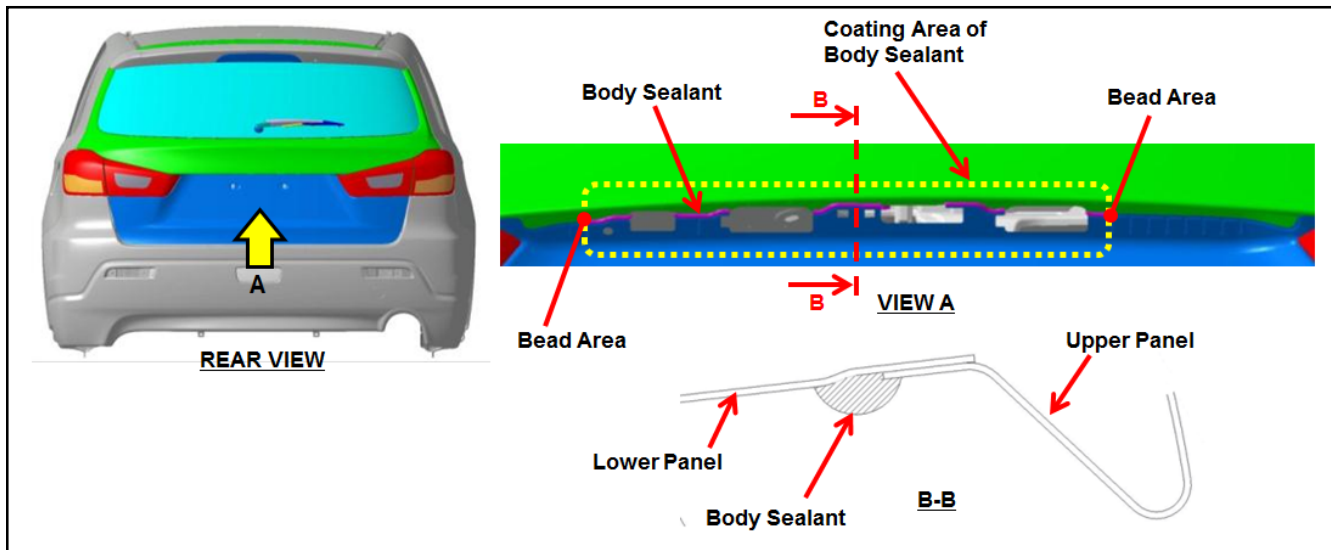


AFFECTED VEHICLES

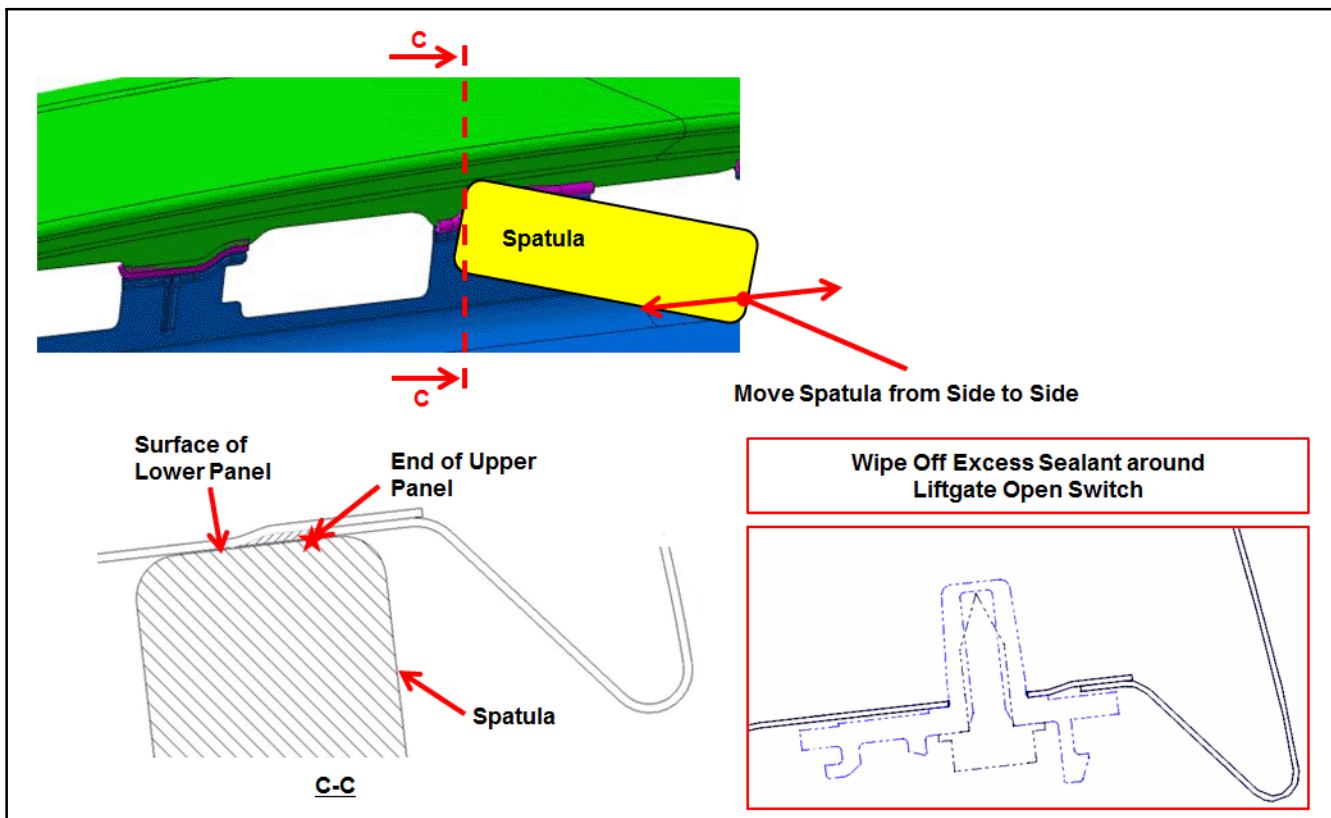
All 2011–2012 Outlander Sport/RVR

REPAIR PROCEDURE

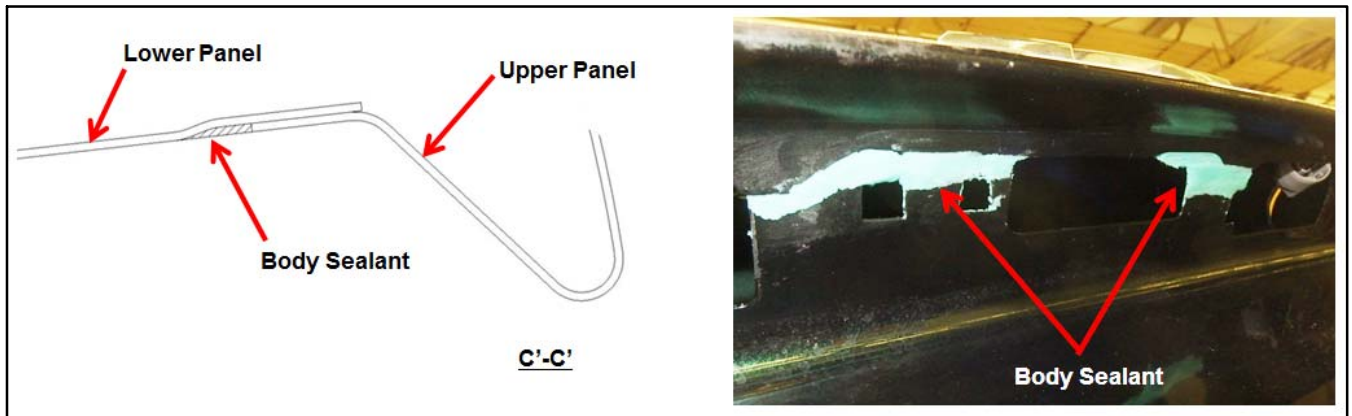
1. Repair all rusted areas as necessary.
2. Apply body sealant to the edge of the upper panel on the liftgate.



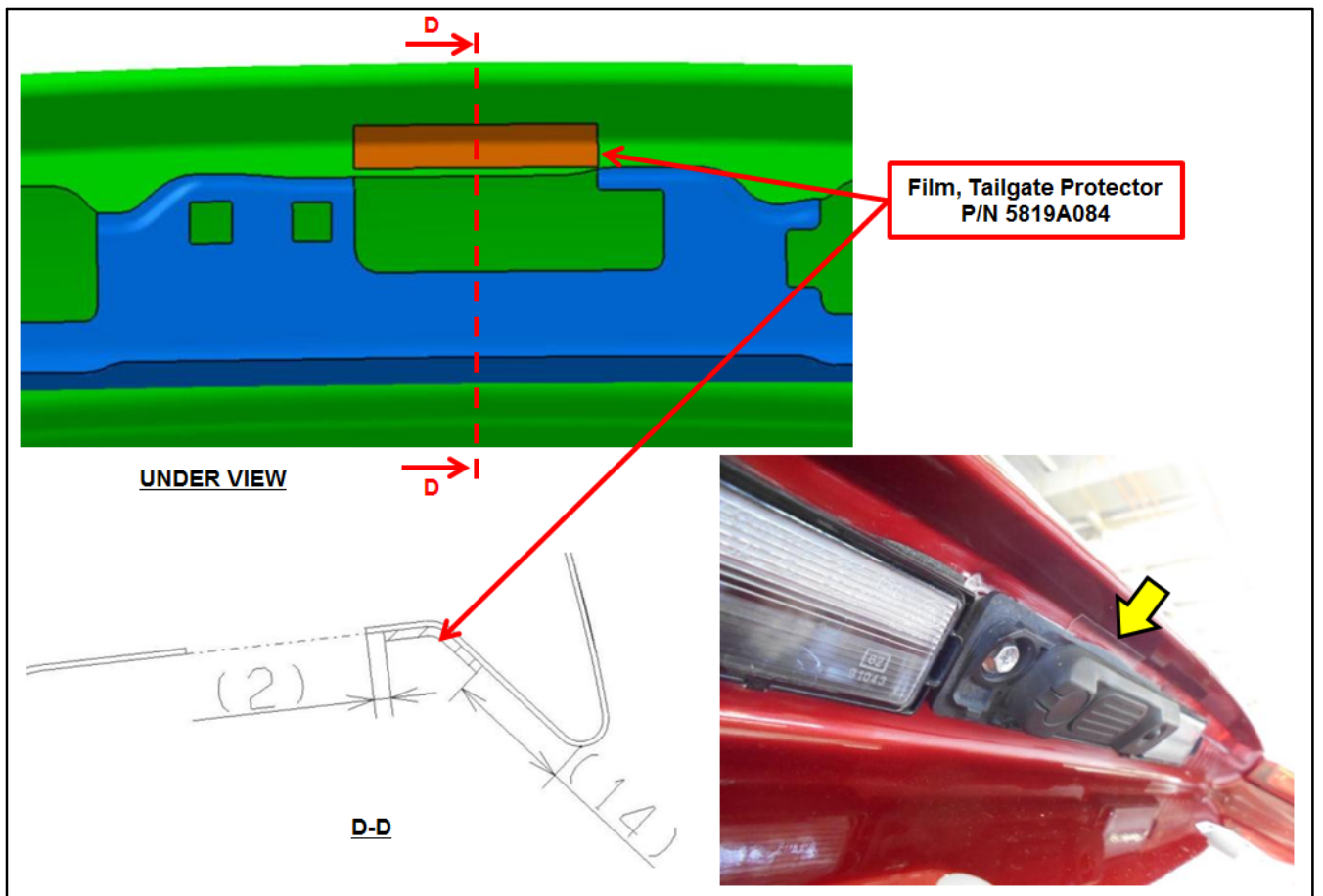
3. Using a spatula, wipe off excess sealant on the edge of the upper panel and surface of the lower panel. Wipe off any sealant on the edge of the hole for the liftgate open switch.



NOTE: Ensure there is sufficient sealant between the upper and lower panels, and the sealant surfaces are smoothed out flush with the body panel surfaces.



4. Paint the repaired area(s) as necessary with the vehicle specific colors.
5. Apply the countermeasure protection film (P/N 5819A084) to the liftgate open switch area on the body panel as shown.



PARTS INFORMATION

Use only the Genuine Mitsubishi Parts listed below.

Description	Part Number	Qty.
Film, Tailgate Protector	5819A084	1

WARRANTY INFORMATION

This bulletin is supplied as technical information only and is not an authorization to repair. If an affected vehicle is reported with the described condition, diagnose the condition, repair as described in this bulletin and submit a normal warranty claim using the following information.

If touch-up painting of the liftgate is required, follow standard warranty procedures for claim submission.

Description: **Lower Liftgate Panel Rust: Repair Rust/Corrosion and Apply Body Sealant and Protective Film**

Operation Code	Nature Code	Cause Code	Operation time
424311 99	30D	580	Actual time

Warranty Coverage: Basic Coverage – Refer to the Superscreen for individual vehicle warranty coverage terms.

Normal warranty procedures PWA limit requirements apply.