



NUMBER: 23-052-15

GROUP: Body

DATE: December 19, 2015

This bulletin is supplied as technical information only and is not an authorization for repair. No part of this publication may be reproduced, stored in a retrieval system, or transmitted, in any form or by any means, electronic, mechanical, photocopying, or otherwise, without written permission of FCA US LLC.

SUBJECT:

Center Console Lid Binding

OVERVIEW:

This bulletin involves adding a rubber bumper to the console lid.

MODELS:

2015 - 2016	(DS)	Ram 1500 Pickup
2015 - 2016	(DJ)	Ram 2500 Pickup

NOTE: This bulletin applies to vehicles within the following markets/countries:
NAFTA, LATAM, EMEA, and APAC.

NOTE: This bulletin applies to DS vehicles built on or after April 05, 2015 (MDH 0405XX) and on or before October 07, 2015 (MDH 1007XX) equipped with a Floor Console (Sales Codes CM5, CUF, CUM, CUP and CVT).

NOTE: This bulletin applies to DJ vehicles built on or after April 17, 2015 (MDH 0417XX) and on or before October 07, 2015 (MDH 1007XX) equipped with a Floor Console (Sales Codes CM5, CUF, CUM, CUP and CVT).

SYMPTOM/CONDITION:

The customer may describe a binding, hesitation or audible clicking condition when the center console lid is being opened or closed.

DIAGNOSIS:

If a customer's VIN is listed in VIP or your RRT VIN list, perform the repair. For all other customers that describe the symptom/condition listed above, perform the Repair Procedure.

PARTS REQUIRED:

Qty.	Part No.	Description
1	68135574AA	Bumper Kit, Rubber

SPECIAL TOOLS/EQUIPMENT REQUIRED:

C-4755	Trim Stick
--------	------------

REPAIR PROCEDURE:

1. Locate the center console inside the vehicle.
2. Slowly open the upper lid of the center console while checking the gap between the bottom of the upper lid and the top of the lower lid for rubbing together as shown in (Fig. 1).



Fig. 1 Check Lid For Rubbing

3. Check the rear of the upper lid hinge for binding, hesitation or an audible clicking as shown in (Fig. 2).

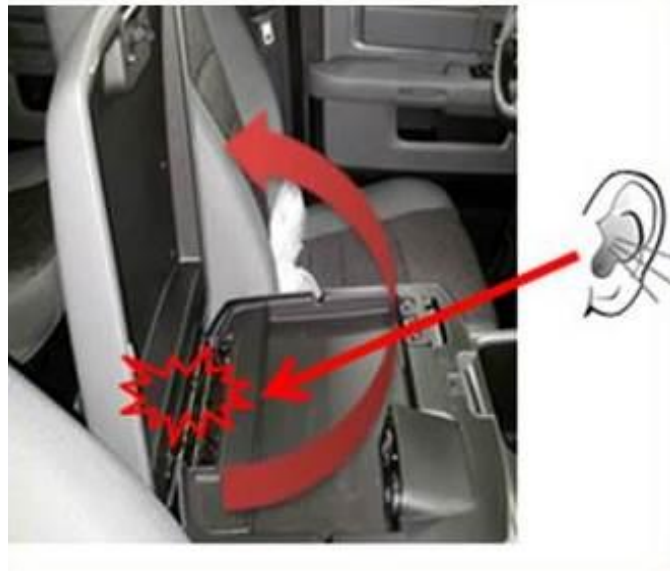


Fig. 2 Checking Lid Noise

-
4. Repeat [Step #2](#) three times by fully opening and closing the upper lid until completely latched.
 5. Does the center console upper lid indicate binding, hesitation or an audible clicking?
 - a. YES>>> Identify the vehicle with the condition by reporting the vehicle as a rejected ship hold and continue with the Repair Procedure in [Step #6](#).
 - b. NO>>> This bulletin does not apply. Use the Inspection LOP 23-14-15-92 to close the RRT.
 6. Move either the driver or passenger seat all the way forward in the vehicle.
 7. If equipped, open a rear door.

8. Using trim stick tool C-4755, remove the rear panel from the back of the console as shown in (Fig. 3).



Fig. 3 Rear Console Panel

-
9. Using the bumper kit, remove the tail as shown in (Fig. 4).



Fig. 4 Bumper

10. At the rear of the center console wall on the lower lid, identify the two notches as shown in (Fig. 5).

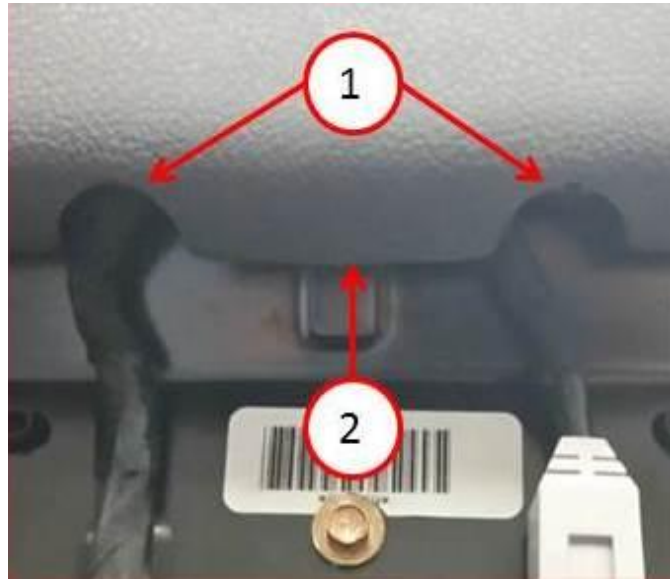


Fig. 5 Bumper Location

1 - Notches

2 - Location Of Bumper Installation

-
11. At the center of the console wall on the lower lid (as noted in the previous step), insert the bumper where the red triangle is shown. It will take some effort to push the bumper in flush with the edge of the lower lid as shown in (Fig. 6) and (Fig. 7).

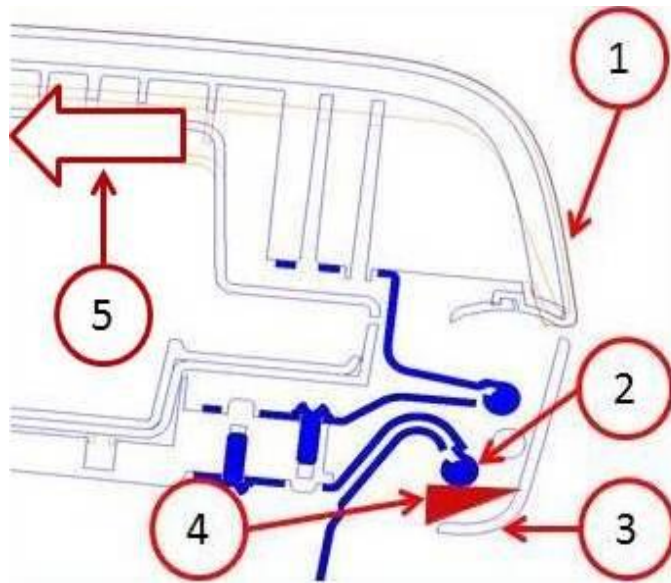


Fig. 6 Bumper Installation

- 1 - Rear Of The Center Console
 - 2 - Hinge
 - 3 - Lower Lid
 - 4 - Bumper
 - 5 - Front Of The Console
-



Fig. 7 Bumper Being Installed

- 1 - Bumper
-

12. To assist the installation of the bumper, press the back wall of the lower lid to relieve some tension while inserting the bumper as shown in (Fig. 8).

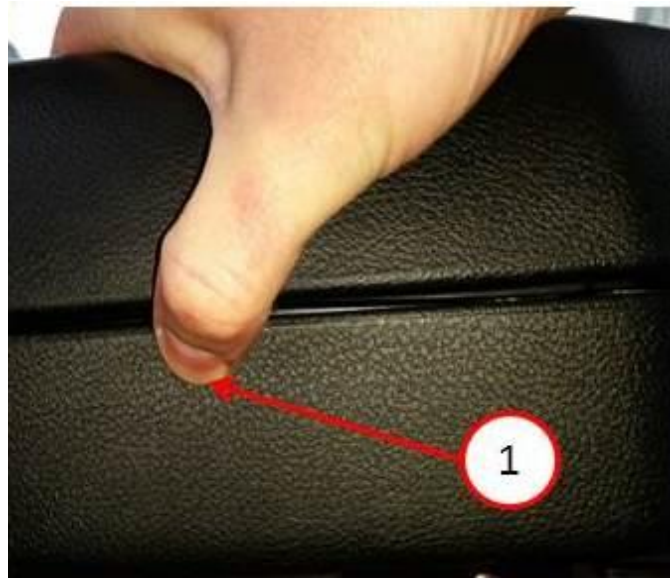


Fig. 8 Bumper Installation Continued

1 - Press The Back Wall

-
13. Visually inspect the area of repair that the bumper is installed as shown in (Fig. 9).

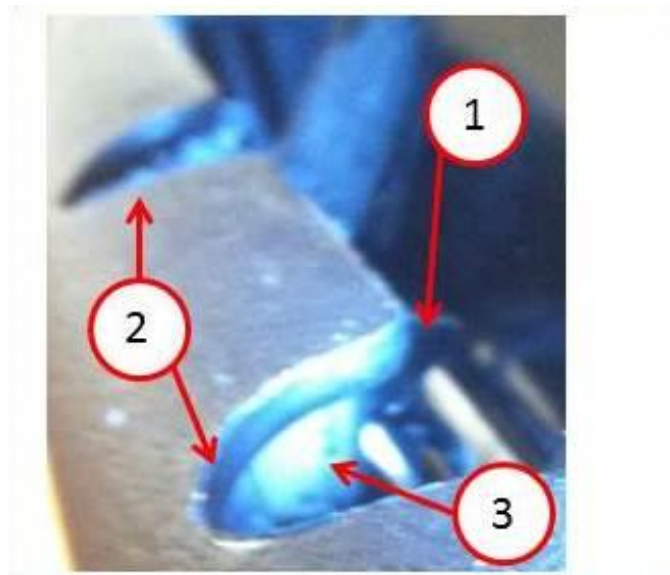


Fig. 9 Bumper Installed

1 - Metal Tab On The Lower Lid Hinge
2 - Notches
3 - Bumper Installed

14. Reinstall the rear panel. Confirm the panel is fully seated and all clips are engaged.
15. Confirm the repair by slowly opening the upper lid of the center console while moving the upper lid side to side/back and forth; and checking the rear of the upper lid hinge for binding, hesitation or an audible clicking.

POLICY:

Reimbursable within the provisions of the warranty.

TIME ALLOWANCE:

Labor Operation No:	Description	Skill Category	Amount
23-14-15-92	Inspection - Center Console Lid (1 - Semi-Skilled)	12 - Body Repair	0.2 Hrs.
23-14-15-93	Inspect And Replace (1 - Semi-Skilled)	12 - Body Repair	0.2 Hrs.

FAILURE CODE:

ZZ	Service Action
----	----------------