



Please perform the procedure outlined in this Service Information on all affected vehicles before customer delivery. In the event the customer has already taken delivery of the vehicle, please perform the procedure the next time the vehicle is in the shop.

SUBJECT

Service Action: Repair the PVC seam on the left A-pillar

MODEL

F22 (2 Series Coupe)

SITUATION

The left A-pillar/bulkhead joint may be leaking.

AFFECTED VEHICLES

The joint of the bulkhead plate and A-pillar reinforcement is supposed to be sealed with an adhesive strip and a PVC seam. The PVC seam was not applied correctly in places and can cause leaks.

Vehicles which require this Service Action to be completed will show it as "Open" when checked either in the "Service Menu" of DCSnet (Dealer Communication System) or with the Key Reader.


CAUSE

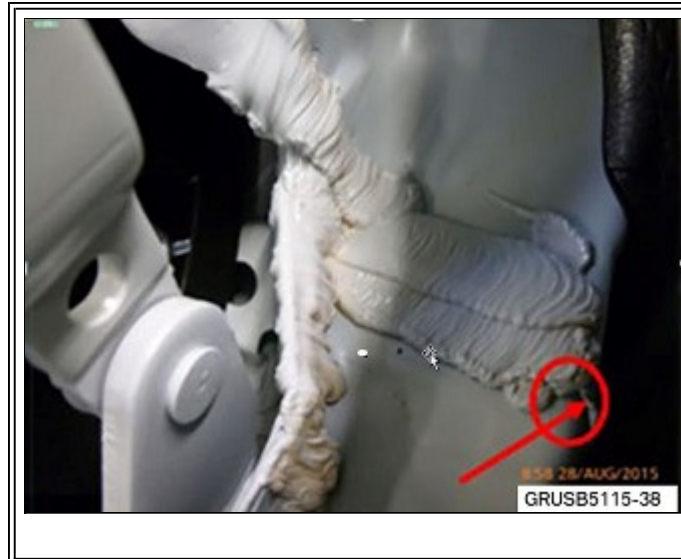
The joint of the bulkhead plate and A-pillar reinforcement is supposed to be sealed with an adhesive strip and a PVC seam. The PVC seam was not applied correctly in places and can cause leaks.

CORRECTION

Properly apply PVC to the joint and check for prior leakage.

PROCEDURE

	<ol style="list-style-type: none">1. Remove the sealing trim from the left-hand side panel
---	--



2. **Clean the affected surface and increase the length of the existing PVC seam in the direction of the side panel (see arrow).**

- Note: Push sealant into the gap and smooth out the seam.



3. **Check for water in driver footwell.**

- Remove the footwell side trim panel on the left-hand A-pillar.
- Refer to Repair Instructions **REP 51 43 070 Remove and refit/replace the footwell side trim panel on the left-hand A-pillar.**
- Lift the carpet slightly.
- If water is discovered, it must be removed and the residual moisture in the carpet must be eliminated by drying it thoroughly

Note: It is not necessary to remove the carpet.

4. Reassemble the vehicle.

PARTS INFORMATION

Part Number	Description	Quantity
83 42 0 428 349	Seam sealer 300ml	As needed

WARRANTY INFORMATION

Reimbursement for this Service Action will be via normal claim entry utilizing the following

information:

Defect Code:	00 41 70 01 00	
Labor Operation:	Labor Allowance:	Description:
00 63 766	7 FRU	Repair PVC seam (Plus work)
Or:		
00 63 767	9 FRU	Repair the PVC seam and dry the carpet (Plus work)

And:

Sublet – Bulk Materials

Sublet Code 4	See sublet reimbursement calculation below	Reimbursement for the repair-related bulk material (PN 83 42 0 428 349 – Seam sealer. Please, do not use part numbers for claim submission)
---------------	--	---

Sublet reimbursement calculation for claiming the used quantities of repair-related bulk material (PN 83 42 0 428 349) is at dealer net plus handling.

Enter this material cost in sublet and itemize the amount in the claim comment section.

[Copyright ©2015 BMW of North America, Inc.]