



SUBJECT

Washer Fluid Reservoir Rattles While Driving on Rough Roads

MODEL

F23 (2 Series Convertible)

Produced from August 13, 2014 to December 7, 2014

SITUATION

The customer complains of rattling noises from the glove compartment area.

CAUSE

The windshield washer reservoir upper plastic locating guide tab has too much lateral play.

CORRECTION

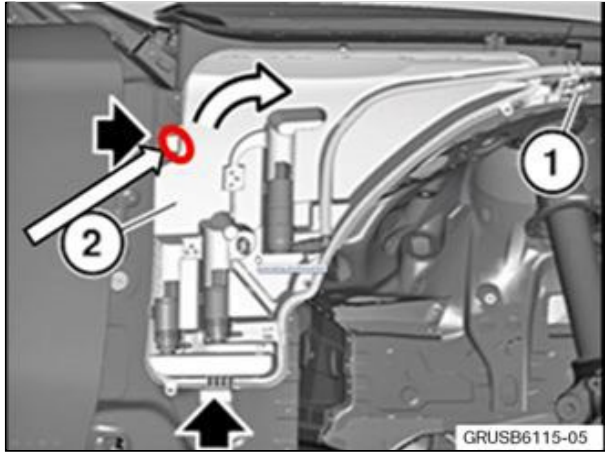
Apply a piece of self-adhesive felt tape to the upper plastic locating guide of the washer fluid reservoir.

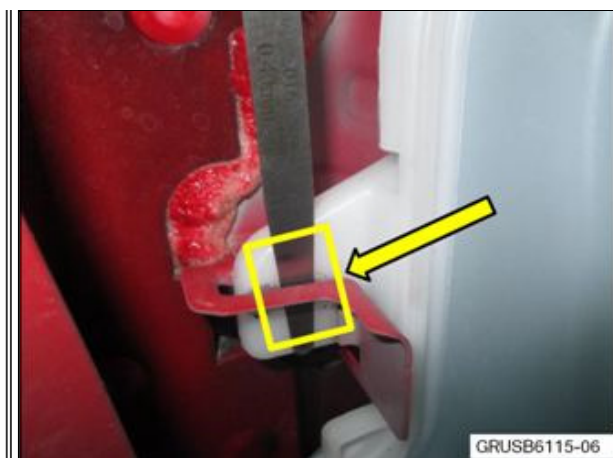
PROCEDURE

Refer to Repair Instruction 61 71 061 and remove the washer fluid reservoir.

Necessary preliminary tasks:

- Remove the front right wheel arch cover.

	<p>Note: The picture shown is with the passenger side fender removed for clarity purposes. Remove the screw (1). The tightening torque is 8 Nm. Pull the washer fluid reservoir (2) out of the guides (arrow) in the direction of the arrow. Unlock and disconnect all plug connections. Unlock the filler hose and pull it off the fitting on the washer fluid reservoir.</p> <p>Note: Catch any escaping washer fluid if necessary.</p>
	<p>The close-up picture shows a gap (0.40 mm) that exists between the plastic reservoir guide and the metal securing bracket. With the reservoir removed, clean the upper guide tab with a clean cloth. Prepare a piece of felt tape (80 x 60 x 1 mm) and apply it to the guide tab in the area shown. The felt tape will eliminate</p>



the rattling noises coming from the metal bracket which can transmit into the glove compartment area. Reinstall the removed parts in the reverse order of their removal.

PARTS INFORMATION

Part Number	Description	Quantity
51 45 2 353 024	Felt strip (80 x 60 x 1 mm)	See below

WARRANTY INFORMATION

Covered under the terms of the BMW New Vehicle/SAV Limited Warranty.

Defect Code:	61 66 01 37 00	
Labor Operation:	Labor Allowance:	Description:
61 71 061	Refer to KSD2	Replace the washer fluid reservoir for the window washing system
And:		
61 99 000	1 FRU	Work time to prepare and apply a felt strip to the washer reservoir

If you are using a Main labor code for another repair, use the Plus code labor operation 61 71 561 instead.

Refer to KSD2 for the corresponding flat rate unit (FRU) allowance.

Even though work time labor operation code 61 99 000 ends in “000,” it is not considered a Main labor operation. Also, since the “work time” FRU allowance to be claimed is specified, a separate punch time is not required.

Sublet - Materials

Sublet Code 4	\$1.00	Reimbursement for the used quantity of reference P/N 51 45 2 253 024. Do not use
---------------	--------	--

	this part number for claim submission.
--	---

[Copyright ©2015 BMW of North America, Inc.]