



SUBJECT

Ticking Noise from Front Axle When Cornering

MODEL

F22 (2 Series Coupe)

F23 (2 Series Convertible)

F30 (3 Series Sedan)

F31 (3 Series Sport Wagon)

F32 (4 Series Coupe)

F33 (4 Series Convertible)

F34 (3 Series Gran Turismo)

F36 (4 Series Gran Coupe)

SITUATION

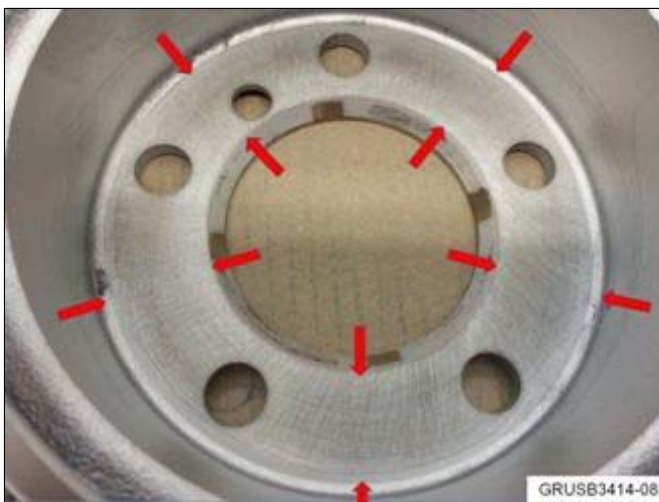
The customer may complain of a ticking noise from the front axle when cornering, maneuvering, parking or pulling away from a parking space. The noise can be heard as a light metallic ticking from the front outer cornering wheel.

CAUSE

Movement between the brake disc and wheel bearing hub.

CORRECTION

Remove and clean the front axle brake discs.



Sand the hub surface on the **brake disc** to the wheel bearing hub using 80-grit sandpaper.

Sand the surface in a radial motion (inside to outside around the surface). Clean the wheel bearing hub surface.

Important!!

Do not sand the hub surface.

Do not apply any type of lubricant to the components surface (wheel bearing or brake disc).

Reinstall the front axle brake discs.

WARRANTY INFORMATION

Covered under the terms of the BMW New Vehicle/SAV Limited Warranty.

Defect Code:	34 11 00 57 00	
Labor Operation:	Labor Allowance:	Description:
34 11 220	Refer to KSD	Removing and installing both front brake discs
And:		
34 99 000	2 FRU	Work time for sanding hub surface of brake discs and cleaning wheel hub surfaces

Labor operation code 34 11 220 is a Main labor operation.

If you are using a Main labor code for another repair, use the Plus code labor operation 34 11 609 instead. With the front brake calipers removed, use 34 11 612, or with the front brake pads removed, use 34 11 613.

Refer to KSD2 for the corresponding flat rate unit (FRU) allowance. Enter the Chassis Number, which consists of the last 7 digits of the Vehicle Identification Number (VIN). Click on the “Search” button, and then enter the applicable flat rate labor operation in the FR code field.

Even though work time labor operation code 34 99 000 ends in “000”, it is not considered a Main labor operation. Also, since the “work time” FRU allowance to be claimed is specified, a separate punch time is not required.

[Copyright ©2015 BMW of North America, Inc.]