



SI B33 01 15  
Rear Axle

July 2015  
Technical Service

---

This Service Information bulletin supersedes SI B33 01 15 **dated June 2015**.

**NEW** designates changes to this revision

#### **SUBJECT**

**Cracking in Rear Differential Mount Bushing**

#### **MODEL**

F10 (5 Series)

F01 (7 Series)

F02 (7 Series LWB)

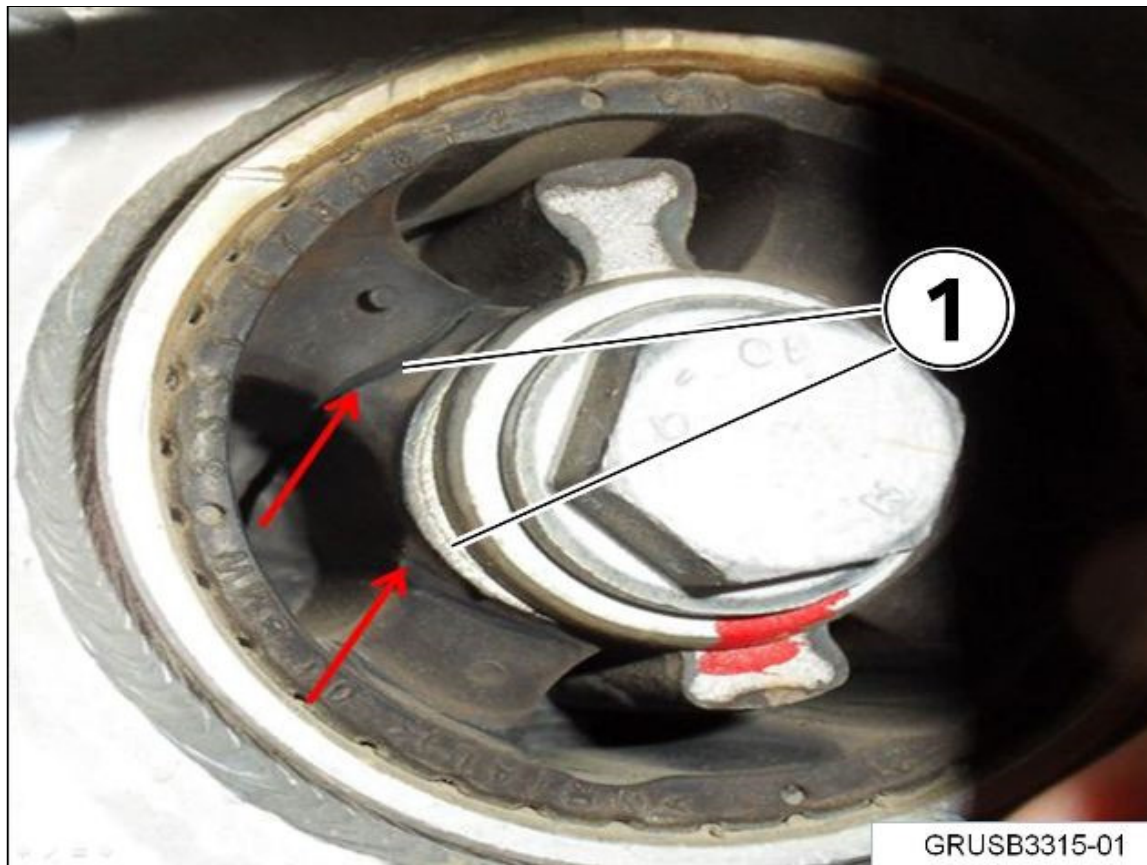
#### **SITUATION**

During inspection, the rear differential mount in the rear axle support shows signs of cracking.

#### **NEW PROCEDURE**

When inspected:

- A. Slight surface cracking of the rubber part of the bushing is normal. This type of cracking (1) is not critical to the suspension acoustics or the operational stability of the vehicle. In this case, the differential bushing should not be replaced. However:
- B. If the bushing is cracked “all the way through,” it will need to be replaced.



When applicable (condition “B”), please refer to Repair instruction RA 33 17 005, “Replacing rubber mounts for rear differential mounting at rear.”

**NEW PARTS INFORMATION**

Part Number	Description	Quantity
33 31 6792 872	Bushing	1

The Warranty Parts Return Center (WPRC) will request that claim-related bushing replacements be returned.

**NEW WARRANTY INFORMATION**

Condition “B” is covered under the terms of the BMW New Vehicle Limited Warranty for Passenger Cars and Light Trucks.

<b>Defect Code:</b>	<b>33 17 00 01 00</b>	
<b>Labor Operation:</b>	<b>Labor Allowance:</b>	<b>Description:</b>
33 17 005	Refer to KSD2	Replacing rubber mounts of rear final drive suspension

If you are using a Main labor code for another repair, use the Plus code labor operation 33 17 505 instead.

Refer to KSD2 for the corresponding flat rate unit (FRU) allowance.

**Sublet – Bulk Materials**

Sublet Code 4	See sublet reimbursement calculation below	Reimbursement for the repair-related bulk materials (please do not use part numbers for claim submission)
---------------	--	---

Sublet reimbursement calculation for claiming the used quantities of repair-related bulk materials (BMW part numbers) is at dealer net plus handling.

Enter this material cost in sublet and itemize the amount in the claim comment section.

[ Copyright ©2015 BMW of North America, Inc. ]