

**SUBJECT****Valve Stem Replacement with Wheel Electronics****MODEL**

E90 (3 Series Sedan)

E91 (3 Series Sports Wagon)

E92 (3 Series Coupe)

E93 (3 Series Convertible)

Produced from 09/2009

E70 (X5)

E71 (X6)

E72 (X6 ActiveHybrid 6)

E82 (1 Series Coupe)

E83 (X3)

E85 (Z4 Roadster)

E86 (Z4 Coupe)

E88 (1 Series Convertible)

Produced from 09/2010

E84 (X1)

E89 (Z4 Roadster)

F01 (7 Series Sedan)

F02 (7 Series Sedan)

F02H (ActiveHybrid 7)

F04 (ActiveHybrid 7)

F06 (6 Series Gran Coupe)

F07 (5 Series Gran Turismo)

F10 (5 Series Sedan)

F10H (ActiveHybrid 5)

F12 (6 Series Convertible)

F13 (6 Series Coupe)

F15 (X5)

F16 (X6)

F22 (2 Series Coupe)

F23 (2 Series Convertible)

F25 (X3)

F26 (X4)

F30 (3 Series Sedan)

F30H (ActiveHybrid 3)

F31 (3 Series Sports Wagon)

F32 (4 Series Coupe)

F34 (3 Series Gran Turismo)

F36 (3 Series Gran Coupe)

F80 (M3 Sedan)

F82 (M4 Coupe)

F83 (M4 Convertible)

I01 (i3, i3 REx)

I12 (i8)

Produced from SOP

#### **SITUATION**

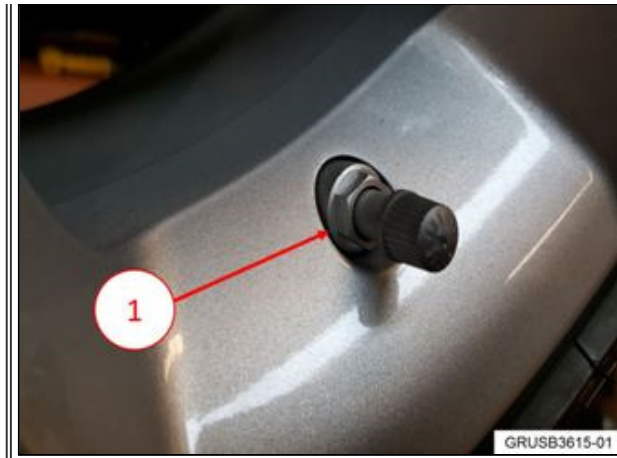
Tire pressure loss after replacement of the RDC/RDCi wheel electronics

#### **CAUSE**

Valve stems are not being replaced in conjunction with RDC/RDCi wheel electronics replacement.

#### **INFORMATION**

	<p>The valve stems are single-use only, and must be replaced every time the wheel electronics are replaced. If you loosen the nut (1), you must replace the valve stem. Failure to replace the valve stem will lead to a pressure leak. The proper repair procedure can be found in REP 3611533.</p>
--	--



**WARRANTY INFORMATION**

Not applicable.

[ Copyright ©2015 BMW of North America, Inc. ]