



NUMBER: 23-009-15

GROUP: Body

DATE: March 04, 2015

This bulletin is supplied as technical information only and is not an authorization for repair. No part of this publication may be reproduced, stored in a retrieval system, or transmitted, in any form or by any means, electronic, mechanical, photocopying, or otherwise, without written permission of FCA US LLC.

SUBJECT:

Front Window Popping/Clicking Noise While Powered Up Or Down

OVERVIEW:

This bulletin involves lubricating the window to regulator attachment point.

MODELS:

2014 - 2015 (PF) Dodge Dart

NOTE: This bulletin applies to vehicles built on or after January 01, 2014 (MDH 0101XX) and on or before November 12, 2014 (MDH 1112XX).

SYMPTOM/CONDITION:

The customer may describe a popping/clicking noise while powering the right and/or left front door window up or down.

DIAGNOSIS:

If the customer describes the symptom, perform the Repair Procedure.

PARTS REQUIRED:

Qty.	Part No.	Description
1	05019061AA	Nye® 880 Synthetic Lubricant 1 oz. tube or Material Standard 7751 equivalent.

NOTE: Each tube of Nye® synthetic lubricant will service approximately 8 windows.

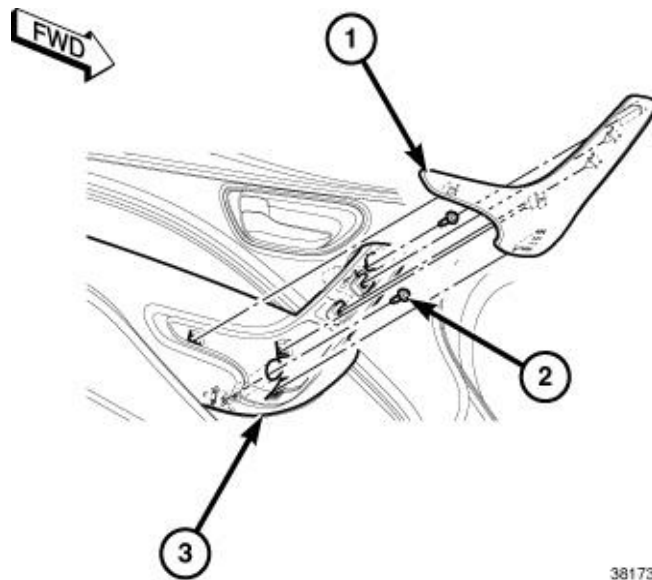
SPECIAL TOOLS/EQUIPMENT REQUIRED:

C-4755	Trim Stick Originally Shipped In Kit Number(s) 9299, 9299CC, 9299CC, 9300A-CAN.
--------	---------------------------------------------------------------------------------

NOTE: The Trim Stick is a non-reimbursable shop tool.

REPAIR PROCEDURE:

1. Using C-4755 or equivalent, gently pry the interior pull handle trim bezel (1) away to disengage the retaining clips (Fig. 1).
2. Remove the two fasteners (2) securing the trim panel to the carrier plate (Fig. 1).



3817398

Fig. 1 Door Handle Trim Bezel

- 1 - Trim Bezel
 - 2 - Fasteners
 - 3 - Interior Pull Handle
-

3. Using Using C-4755 or equivalent, remove and disconnect the window switch (2) from the door (Fig. 2).
4. Using Using C-4755 or equivalent, remove the liner (1) from the door pull handle cavity (Fig. 2).
5. Remove the fastener (3) securing the door trim panel to the carrier plate (Fig. 2).

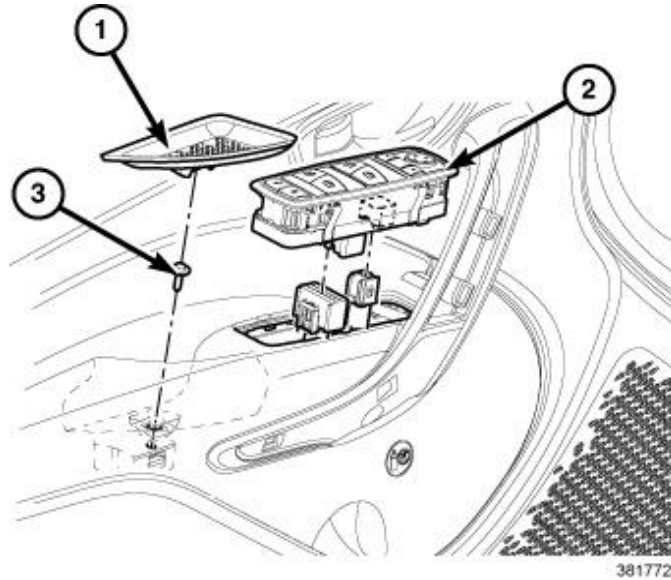
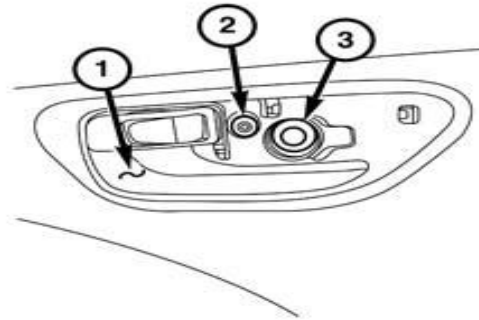


Fig. 2 Window Switch And Liner

- 1 - Liner
 - 2 - Window Switch
 - 3 - Fastener
-

6. Pull out on the interior door latch release lever (1) for clearance while using C-4755 or equivalent to remove the bezel located in the cavity (Fig. 3).
7. Remove the fasteners (2) and (3) securing the door trim panel to the carrier plate (Fig. 3).



231169193

Fig. 3 Door Latch Release Lever

- 1 - Door Latch Release Lever
- 2 - Fastener
- 3 - Fastener

-
8. Using C-4755 or equivalent, pry the door trim panel (1) away, starting along the lower edge and working around the perimeter to disengage the retaining clips (Fig. 4).
 9. Lift the door trim panel (1) up and out while also guiding the trim panel forward to clear the door latch release lever. Position the door trim panel slightly away, do not remove (Fig. 4).
 10. Disconnect electrical connectors from the door trim panel and remove the door trim panel (1) from the door (Fig. 4).
 11. Once the door trim panel is removed, reconnect the window switch in order to move the door glass up/down for positioning (Fig. 4).

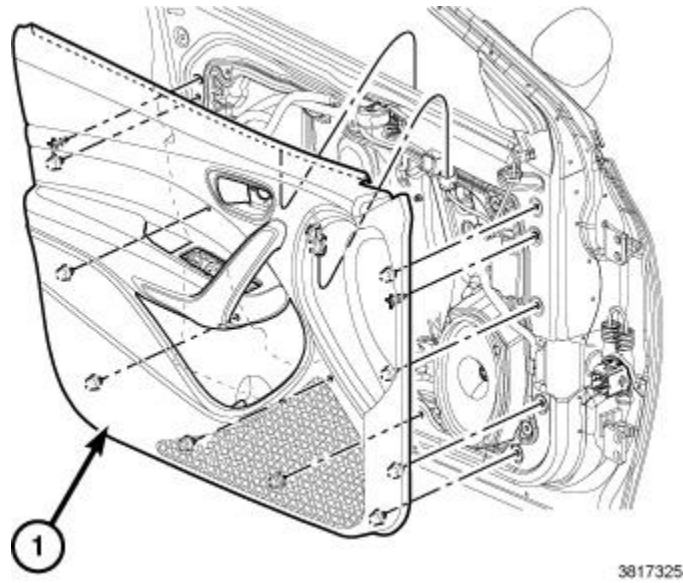


Fig. 4 Door Trim Panel Removal

1 - Door Trim Panel

12. Using C-4755 or equivalent, pry upward to remove the inner door belt weatherstrip (2) to allow the door glass (1) clearance (Fig. 5).

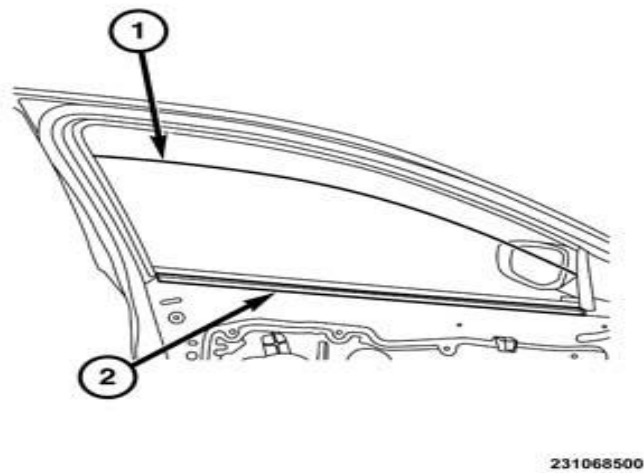


Fig. 5 Belt Weatherstrip Removal

1 - Door Glass
2 - Inner Door Belt Weatherstrip

13. Open the access plugs to expose the door glass fasteners (1) (Fig. 6).
14. Raise or lower the door glass until the door glass fasteners (1) line up in the access holes (Fig. 6).
15. Remove the door glass fasteners (1) (Fig. 6).

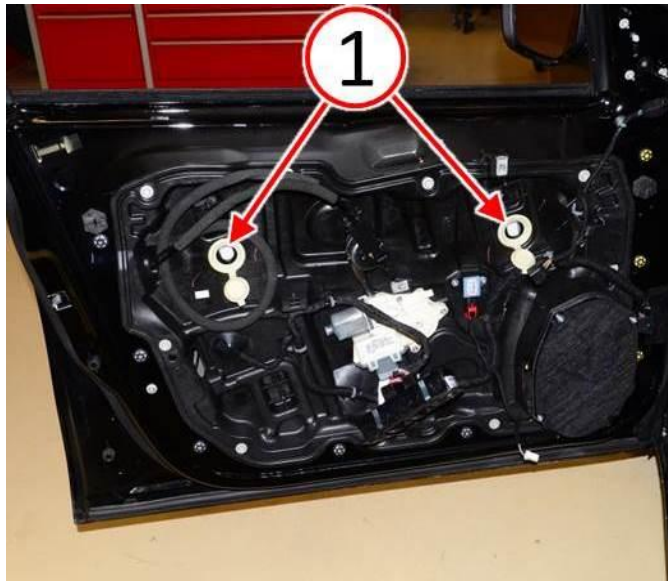
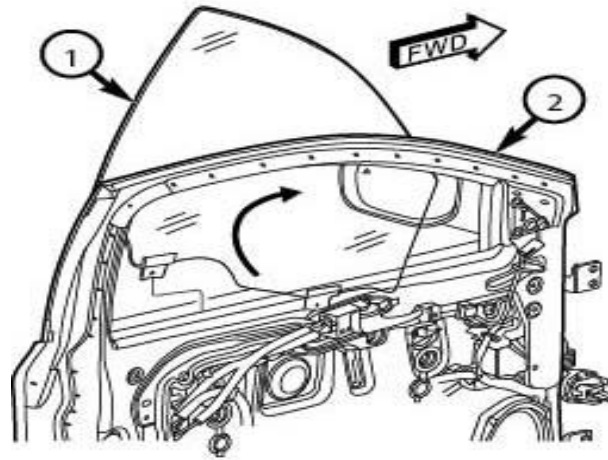


Fig. 6 Door Glass Fasteners Removal

1 - Door Glass Fasteners

16. Lift up on the rear portion of the door glass (1) to tilt the glass (Fig. 7).
17. Remove the door glass (1) from the door (2) (Fig. 7).



230970367

Fig. 7 Door Glass Removal

- 1 - Door Glass
 - 2 - Door
-

18. If dirty, clean the door glass mounts (1) before applying the Nye lubricant (Fig. 8).
19. Apply Nye lubricant (2) to the bottom horizontal surfaces of the door glass mounts (1) (Fig. 8).

NOTE: Nye lubricant must evenly coat the horizontal surfaces of the window glass mount where the glass mount makes contact with the window regulator lift plate.

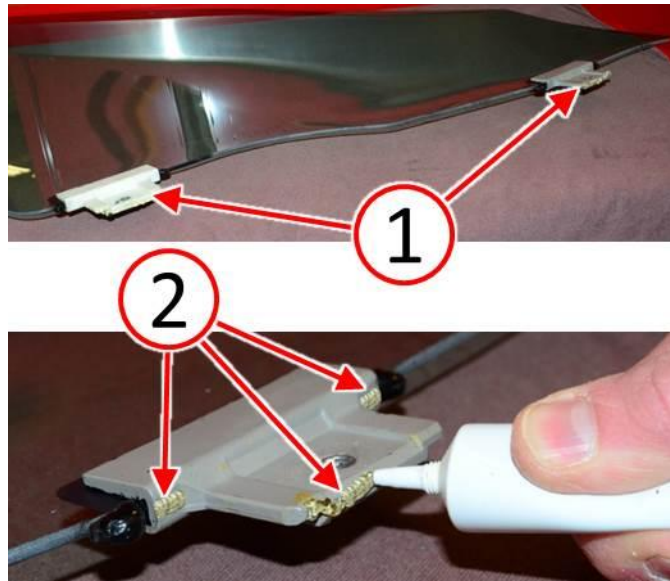


Fig. 8 Lubricate Door Glass Mount

1 - Door Glass Mounts

2 - Nye Lubricant

20. If dirty, clean the window regulator lift plate (2) before applying the Nye lubricant (Fig. 9).
21. Apply Nye lubricant to a cotton swab (1) or equivalent applicator (Fig. 9).

NOTE: Nye lubricant must evenly coat the horizontal surfaces of the window regulator lift plate where the lift plate makes contact with the window glass mount.

22. Transfer the Nye lubricant from the applicator to the window regulator lift plate (2) (Fig. 9).

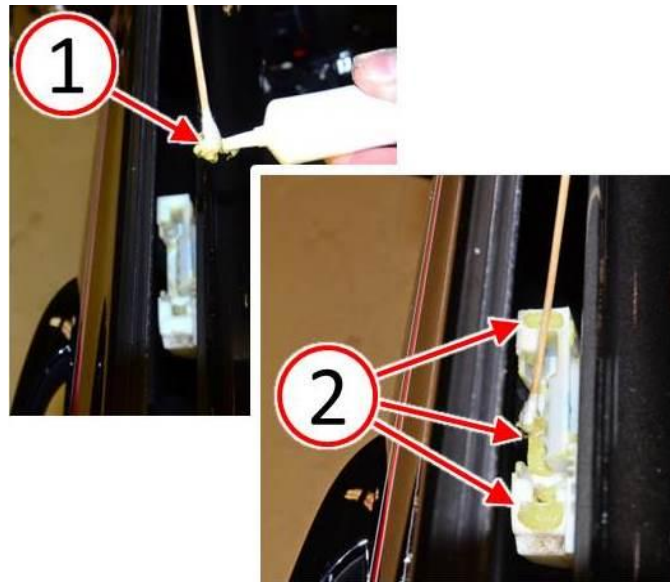
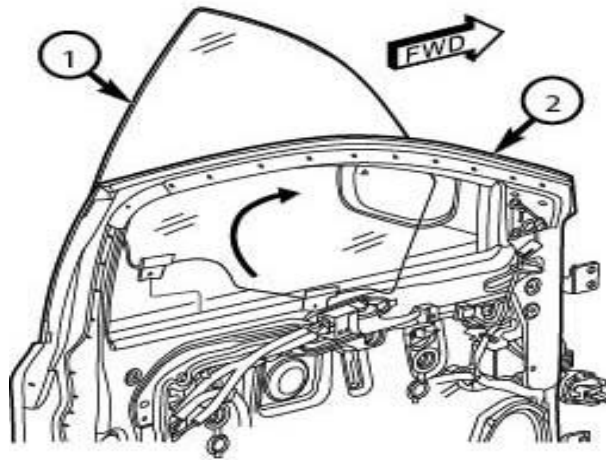


Fig. 9 Lubricate Window Regulator Liftplate

- 1 - Nye Lubricant On Applicator
 - 2 - Window Regulator Lift Plate
-

23. Insert the front of the door glass (1) into the door (2) while being careful not to wipe the Nye lubricant from the door glass mounts ([Fig. 10](#)).
24. Rotate the rear of the door glass (1) into the door (2) until fully seated into the front and rear regulator lift plates ([Fig. 10](#)).



230970367

Fig. 10 Door Glass Installation

- 1 - Door Glass
- 2 - Door

-
25. Align the door glass mounts to the window regulator within the access holes ([Fig. 11](#)).
 26. Apply a medium grade threadlocker adhesive to the door glass fastener threads per manufacturer recommendations.
 27. Install the door glass fasteners (1) and tighten to 5 N·m (44 in. lbs.) ([Fig. 11](#)).
 28. Close the access plugs ([Fig. 11](#)).

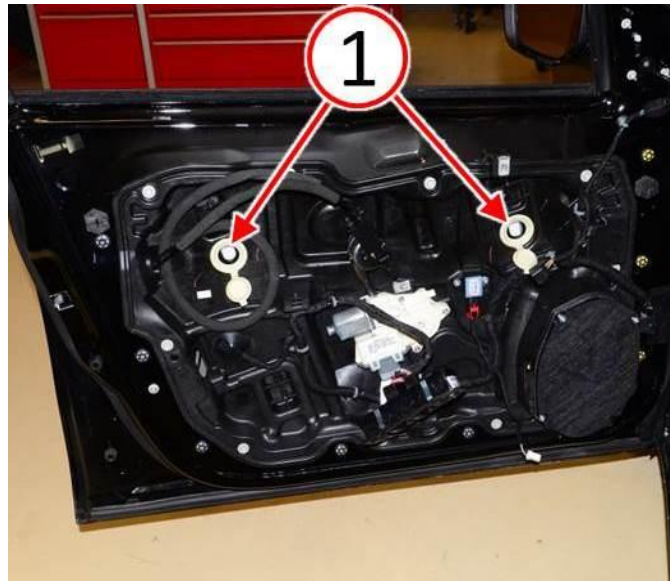
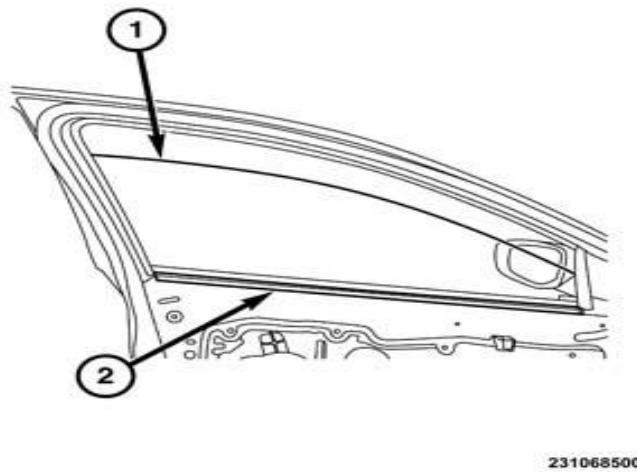


Fig. 11 Door Glass Fasteners Installation

1 - Door Glass Fasteners

29. Install the inner door belt weatherstrip (2) (Fig. 12).



231068500

Fig. 12 Belt Weatherstrip Installation

1 - Door Glass
2 - Inner Door Belt Weatherstrip

30. Disconnect the window switch to prepare for door panel installation.
31. Position the door trim panel (1) near the door (Fig. 13).
32. Connect any electrical connectors as necessary except for the window switch. Feed the window switch electrical harness through the cavity in the door trim panel (1) (Fig. 13).
33. Guide the door latch release lever into the trim panel lever opening while raising the trim panel (1) such that the backside of the upper trim edge can be engaged with inner belt molding (Fig. 13).
34. Align the door trim panel (1) retaining clips to the door (Fig. 13).
35. Once aligned, engage the upper trim edge with the inner belt molding.
36. Hand tap the door trim panel to engage the retaining clips.

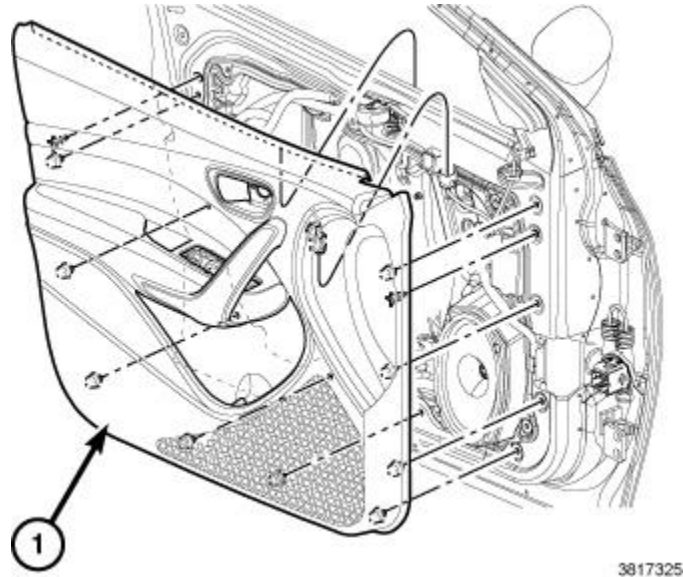
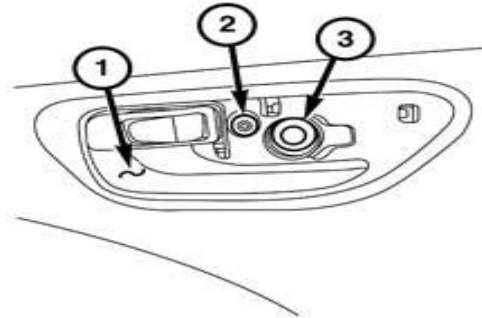


Fig. 13 Door Trim Panel Installation

1 - Door Trim Panel

37. Install the fasteners (2) and (3) into the interior door latch release lever (1) pocket, securing the door trim panel to the carrier plate. Tighten the fasteners securely (Fig. 14).
38. Pull out on the interior door latch release lever (1) for clearance while installing the interior door handle bezel (Fig. 14).



231169193

Fig. 14 Door Handle Bezel.

- 1 - Door Latch Release Lever
- 2 - Fastener
- 3 - Fastener

-
39. Connect and install the window switch (2) to the door (Fig. 15).
 40. Install the fastener (3) securing the door trim panel to the carrier plate. Tighten the fastener securely (Fig. 15).
 41. Install the liner (1) into the door pull handle cavity (Fig. 15).

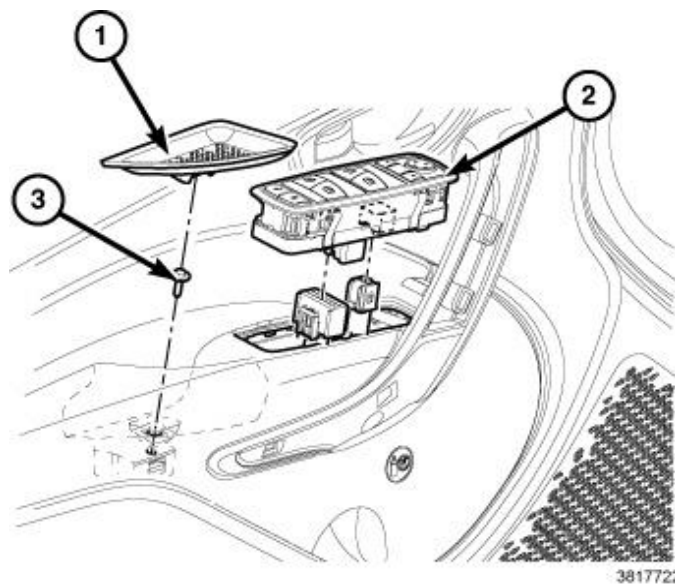


Fig. 15 Window Switch And Liner

- 1 - Liner
- 2 - Window Switch
- 3 - Fastener

-
42. Install the two fasteners (2) securing the trim panel to the carrier plate. Tighten the fasteners securely ([Fig. 16](#)).
 43. Align and position the interior pull handle trim bezel (1), hand tap to engage the retaining clips ([Fig. 16](#)).

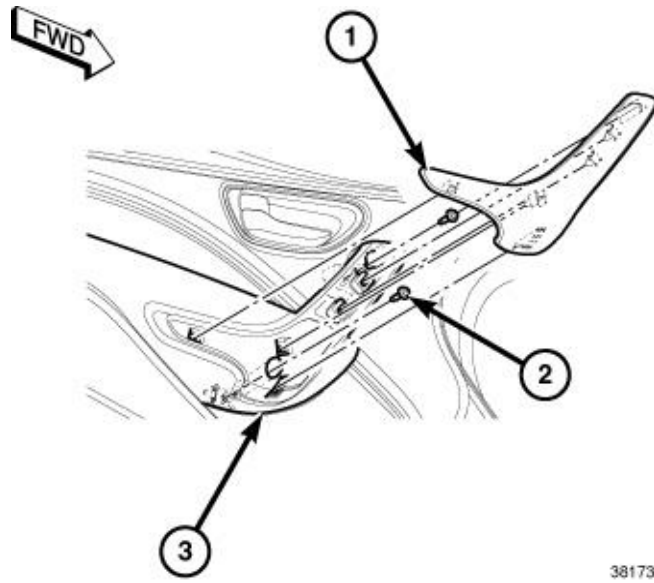


Fig. 16 Door Handle Trim Bezel

- 1 - Trim Bezel
- 2 - Fasteners
- 3 - Interior Pull Handle

-
- 44. Check all door functions to insure proper operation and to confirm that the popping/clicking noise has been eliminated.
 - 45. Clean the door window glass and door trim panel before returning vehicle to the customer.

POLICY:

Reimbursable within the provisions of the warranty.

TIME ALLOWANCE:

Labor Operation No:	Description	Skill Category	Amount
23-30-10-9D	Lubricate Noisy Front Window - One Side Only (1 - Semi-Skilled)	6 - Electrical and Body Systems	0.5 Hrs.
23-30-10-9E	Lubricate Noisy Front Window - Left And Right Sides (1 - Semi-Skilled)	6 - Electrical and Body Systems	0.9 Hrs.

FAILURE CODE:

ZZ	Service Action
----	----------------

PART REIMBURSEMENT DETAIL:

Part No:	Description
NPN	1/8 Of Nye® 880 Synthetic Lubricant

NOTE: This part number is for reimbursement only and will need to be claimed for 1/8 of Dealer Net of Part No. 05019061AA for each window serviced or it will be rejected.