



Countries: BAHAMAS, BOLIVIA, BELIZE, CANADA, CHILE, TAIWAN, COLOMBIA, COSTA RICA, DOMINICAN REPUBLIC, ECUADOR, EL SALVADOR, TRINIDAD AND TOBAGO, UNITED STATES, URUGUAY, VENEZUELA, ARUBA, NICARAGUA, PERU, PUERTO RICO, Curaçao, GUAM, GUATEMALA, GUYANA, HAITI, HONDURAS, JAMAICA, KOREA, SOUTH KOREA, PANAMA

Document ID: IK1200966

Availability: ISIS, Bus ISIS, FleetISIS

Revision: 5

Major System: ENGINES

Created: 10/2/2013

Current Language: English

Last Modified: 8/24/2015

Other Languages: NONE

Author: Alex Buzgau

Viewed: 3245

[Less Info](#)

Hide Details

Coding Information

Copy Link 	Copy Relative Link 	Bookmark View My Bookmarks	Add to Favorites 	Print 	Provide Feedback 	Helpful 35	Not Helpful 0
----------------------	-------------------------------	----------------------------------------------------------	-----------------------------	------------------	-----------------------------	--------------------------	-----------------------------

Title: 2010 EPA I6 DPF Soot Load Reset Procedure

Applies To: 2010 MaxxForce DT, 9, and 10 Engines

CHANGE LOG

Please refer to the change log text box below for recent changes to this article:

08/24/15 - Added note to ignore ash load in ServiceMaxx
 04/28/15 - Author updated for feedback purposes

PROCEDURE

Following a new DPF installation or a used DPF cleaning, and **ONLY THEN**, reset DPF soot load parameters as follows: Go to ServiceMaxx-->Parameters-->CDPF Reset Request-->Yes-->Program Engine. Wait one minute between programming the engine and actually cycling the key off.

IMPORTANT NOTES:

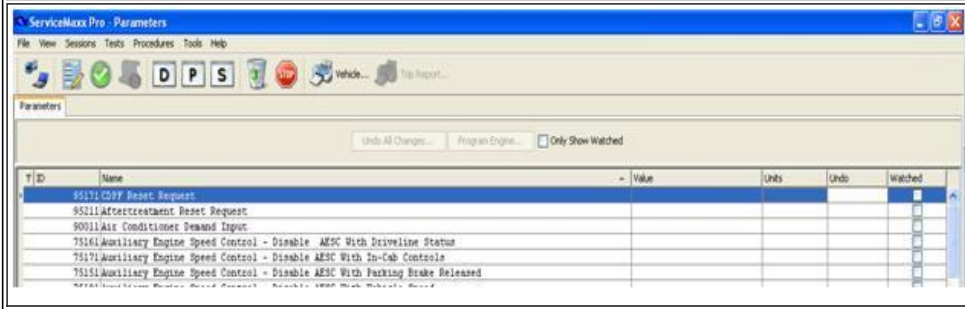
- After cleaning the DPF on pre-2010 engines, there may still be a high ash load percentage value in ServiceMaxx. This signal can be ignored.
- Resetting the CDPF parameter on a loaded filter leads to over heating the DPF on the next regeneration attempt.
- Over heating cracks the DPF.
- DOC outlet temperature set point is lower at higher soot loads to protect the DPF from over heating/cracking.
- DPF replacement needs to be approved by I6 Technical Support.

STEP 1
Select "Parameters".

Name	Value	Units
Engine Oil Pressure Fault 2 Total Miles		miles
Coolant System Fault 2 Total Miles		miles
Engine Oil Pressure Fault 1 Total Miles		miles
Cold Ambient Protection Enable	Disable	
Coolant System Fault 1 Total Miles		miles

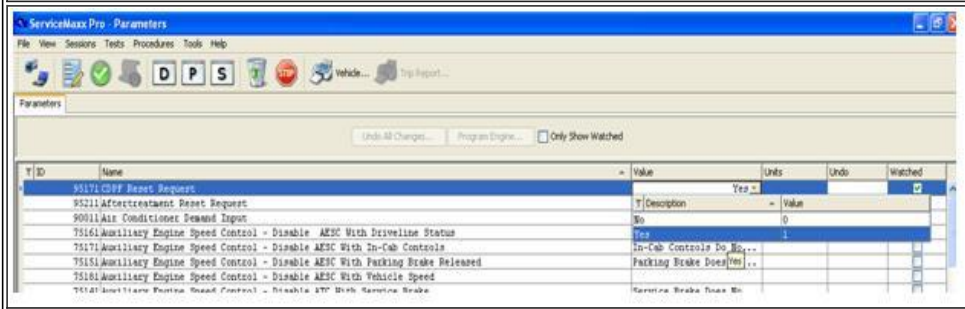
STEP 2

Select "CDPF Reset Request".

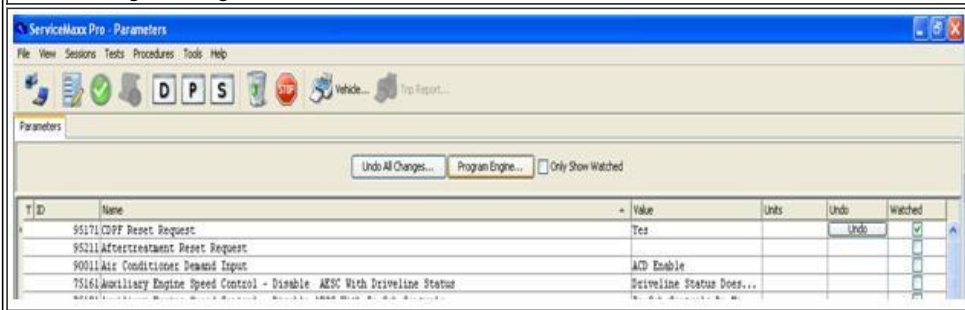


NOTE: **DO NOT** select Aftertreatment Reset Request

STEP 3
Select "Yes".

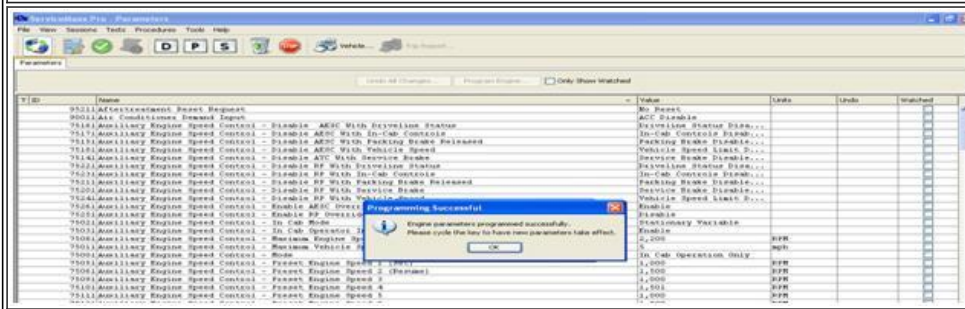


STEP 4
Select "Program Engine".



STEP 5
WAIT ONE MINUTE.

STEP 6
Cycle key off and back on.



 Hide Details

Feedback Information

Viewed: 3244

Helpful: 35

Not Helpful: 0

No Feedback Found

Copyright © 2015 Navistar, Inc.