



Countries:	BAHAMAS, BOLIVIA, BELIZE, CANADA, CHILE, TAIWAN, COLOMBIA, COSTA RICA, DOMINICAN REPUBLIC, ECUADOR, EL SALVADOR, TRINIDAD AND TOBAGO, UNITED STATES, URUGUAY, VENEZUELA, MEXICO, ARUBA, NICARAGUA, PERU, PUERTO RICO, Curaçao, GUAM, GUATEMALA, GUYANA, HAITI, HONDURAS, JAMAICA, KOREA, SOUTH KOREA, PANAMA	Document ID:	IK1200773
Availability:	ISIS, Bus ISIS, FleetSIS	Revision:	4
Major System:	ENGINES	Created:	6/20/2012
Current Language:	English	Last Modified:	8/4/2015
Other Languages:	NONE	Author:	Marcelo Sahagun
Viewed:	3994		

[Less Info](#)

Hide Details

Coding Information

Copy Link 	Copy Relative Link 	Bookmark View My Bookmarks	Add to Favorites 	Print 	Provide Feedback 	Helpful 62	Not Helpful 7
----------------------	-------------------------------	--	-----------------------------	------------------	-----------------------------	--------------------------	-----------------------------

Title: I-6 MaxxForce DT, 9, 10: IPR & HP Oil Pump Inlet Screen Location

Applies To: MaxxForce DT, 9, 10

CHANGE LOG

Please refer to the change log text box below for recent changes to this article:

05/07/2015 - Author updated for feedback purposes
07/22/2015 - Combined IK1200480 with this article.

DESCRIPTION

A screen has been added to capture debris in the oil before reaching the High Pressure Oil Pump (HPOP). The screen is located at the oil inlet to the HPOP (Figure 1).

Engines affected:

- 2004 MY emissions International® DT/HT 466/570 Engines (ESN 2000001 - 2999999)
- 2007 MY emissions MaxxForce® DT/HT 9/10 Engines (ESN 3000000 - 3039999)
- 2007 MY emissions MaxxForce® DT/HT 9/10 Engines (ESN 3040000 - 3299999)
- 2010 MY emissions MaxxForce® DT/HT 9/10 Engines (ESN 3300000 and up)

MaxxForce DT/HT 9/10 (2007-2009)

- For ESN 3040000 - 3299999, it *is* allowable for the HPOP inlet *and* IPR Valve (Figure 1) to have a screen installed at either location, or both locations. This will not affect the engine performance.

MaxxForce DT/HT 9/10 (2010)

- For ESN 3300000 and above, it *is not* allowable to have a screen on the HPOP Inlet and a screen on the IPR Valve. *Do Not* use an IPR screen.

NOTE: IPR Valves for the above mentioned engines are identical. Screens

at IPR Valves can be removed, if needed,
before installation.

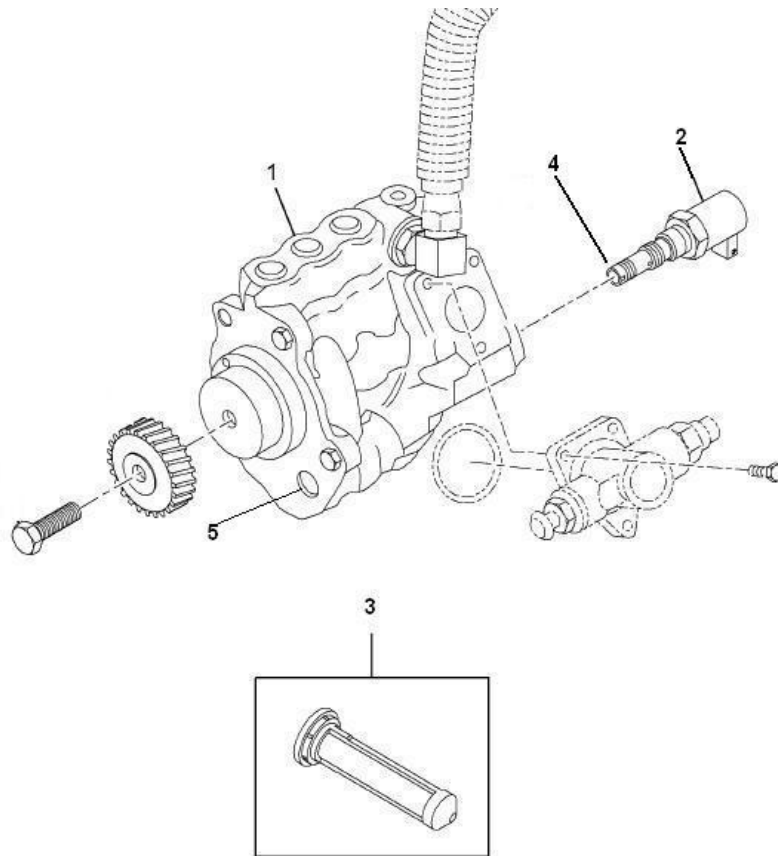


Figure 1: High Pressure Oil Pump

1 HPOP

2 IPR Valve

3 HPOP Inlet Screen

4 IPR Inlet Screen

5 HPOP Oil Inlet

PARTS INFORMATION

The high pressure oil pump (HPOP) has a stepped or non-stepped inlet filter. Refer to TSI 09-12-02 for part identification.

[TSI 09-12-02](#)

WARRANTY INFORMATION

Add-On If Required	Chassis	Engine	Qualifier	SRT	Hours
With Air Compressor	HC Bus	MaxxFace DT/9/10	With 2010 Emission Engines	E12-7454T-1	.5
	CE/BE	MaxxFace DT/9/10	With 2010 Emission Engines	GY12-7454T-1	.5
	CE/BE	N 9/10		GY12-7454TS-1	.5
	4300/4400	MaxxFace DT/9/10	With 2010 Emission Engines	KL12-7454T-1	.5
	4300/4400	N 9/10		KL12-7454TS-1	.5
	7300/7400/7500	MaxxFace DT/9/10	With 2010 Emission Engines	M12-7454T-1	.5
	7300/7400/7500	N 9/10		M12-7454TS-1	.5

Warranty Claim Coding:

Group:	12000 - Engine
Noun:	454 - Pump, Oil / Fuel (High Pressure Injection System)

Standard Repair Time(s):

Description	Chassis	Engine	Qualifier	SRT	Hours
High Pressure Oil Pump and Drive Gear, Replace	FE 300	DT 466/570		A12-3159	2.8
	HC Bus	MaxxFace DT/9/10	With 2010 Emission Engines	E12-7454T	1.4
	CE/BE	DT 466/570		GY12-7454H	2.3
	CE/BE	MaxxFace DT/9/10		GY12-7454K	2.3
	CE/BE	MaxxFace DT/9/10	With 2010 Emission Engines	GY12-7454T	1.4
	CE/BE	N 9/10		GY12-7454TS	1.4
	RE 200/300	MaxxFace DT/9/10		I12-5454K	3.8
	RE	MaxxFace DT/9/10	With 2010 Emission Engines	I12-7454T	2.9
	4300/4400	DT 466/570		KL12-7454H	2.3
	4300/4400	MaxxFace DT/9/10		KL12-7454K	2.3
	4300/4400	MaxxFace DT/9/10	With 2010 Emission Engines	KL12-7454T	1.4
	4300/4400	N 9/10		KL12-7454TS	1.4
	7300/7400/7500	MaxxFace DT/9/10	Beginning With ESN 3000001	M12-7001K	2.6
	7300/7400/7500	DT 466/570		M12-7454H	2.3
	7300/7400/7500	MaxxFace DT/9/10	With 2010 Emission Engines	M12-7454T	1.4
	7300/7400/7500	N 9/10		M12-7454TS	1.4

	RE/Motorhome	MaxxFace DT/9/10	With 2010 Emission Engines	NH12-7454T	2.0
	8500	DT 466/570		P12-7454H	2.3
	8500	MaxxFace DT/9/10		P12-7454K	2.3
	3200	DT 466/570		Z12-7454H	2.3
	3200	MaxxFace DT/9/10		Z12-7454K	2.3

OTHER RESOURCES

[Master Service Information](#)

[Warranty Resource Center](#)

[Warranty iApproval Requirements \(Pre-Approval\)](#)

[SRT Manual](#)

 Hide Details

Feedback Information

Viewed: 3993

Helpful: 62

Not Helpful: 7

No Feedback Found