

Description of Revisions: *This bulletin replaces the version dated March 2009. Part numbers for battery trays and drawer slides have been updated.*

General Information

Battery drawer slides on the Saf-T-Liner C2 School Bus may fail from corrosion and overload. Use the procedures below to replace the battery drawer slides with heavy-duty parts from kit A66-00629-000.

The rollers on the new drawer slides will not work with the old battery trays. In addition to replacing the drawer slides, the battery tray must also be replaced.

Parts

Replacement parts are available from the Parts Distribution Centers (PDCs). See [Table 1](#) for a list of parts for the drawer slide replacement. Use the information in [Table 2](#) to determine which battery tray is needed for the vehicle.

| Battery Drawer Slide Replacement Parts | | |
|--|---------------|----------|
| Description | Part Number | Quantity |
| M6 Hexnut | 913002 006002 | 18 |
| Flatwasher, 1/4-inch | 23-10900-025 | 18 |
| M6 Machine Screw | W505786 S421 | 18 |
| Plastic Cap | 23-12113-006 | 8 |
| Kit, Battery Drawer Slides | A66-00629-000 | 1 |

Table 1, Battery Drawer Slide Replacement Parts

| Battery Tray Replacement Parts | | |
|---------------------------------------|--------------------------|----------|
| Original Tray | Part Number: New Tray | Quantity |
| A06-77227-002 with Group 31 Batteries | A06-88159-000 | 1 |
| A06-77227-003 with Group 31 Batteries | A06-88159-001 | 1 |
| A06-77227-002 with 8D Batteries | A06-88693-000 | 1 |
| A06-71824-000 with Group 31 Batteries | A06-88159-000 | 1 |
| Striker Plates are Required | 06-78559-000 | 2 |
| A06-54657-003 with Group 31 Batteries | A06-88159-000 | 1 |
| Striker Plates are Required | 06-78559-000 | 2 |

Table 2, Battery Tray Replacement Parts

Battery Box Bracket Modification



WARNING

Before doing any of the following procedures, read the instructions in [Section 54.10, Subject 100](#) of the *Saf-T-Liner C2 School Bus Workshop Manual*. Failure to follow the safety precautions could result in personal injury.

1. Park the vehicle on a level surface, shut down the engine, and set the parking brake. Chock the tires.
2. Before working on the battery box bracket, make sure all electrical loads (lights, ignition, accessories) are turned off.
3. Open the battery access door, release the pin latches, slide out the drawer, and remove the batteries. See [Section 54.10, Subject 130](#) of the *Saf-T-Liner C2 School Bus Workshop Manual* for detailed battery removal procedures. **Figure 1** shows a complete battery box assembly.

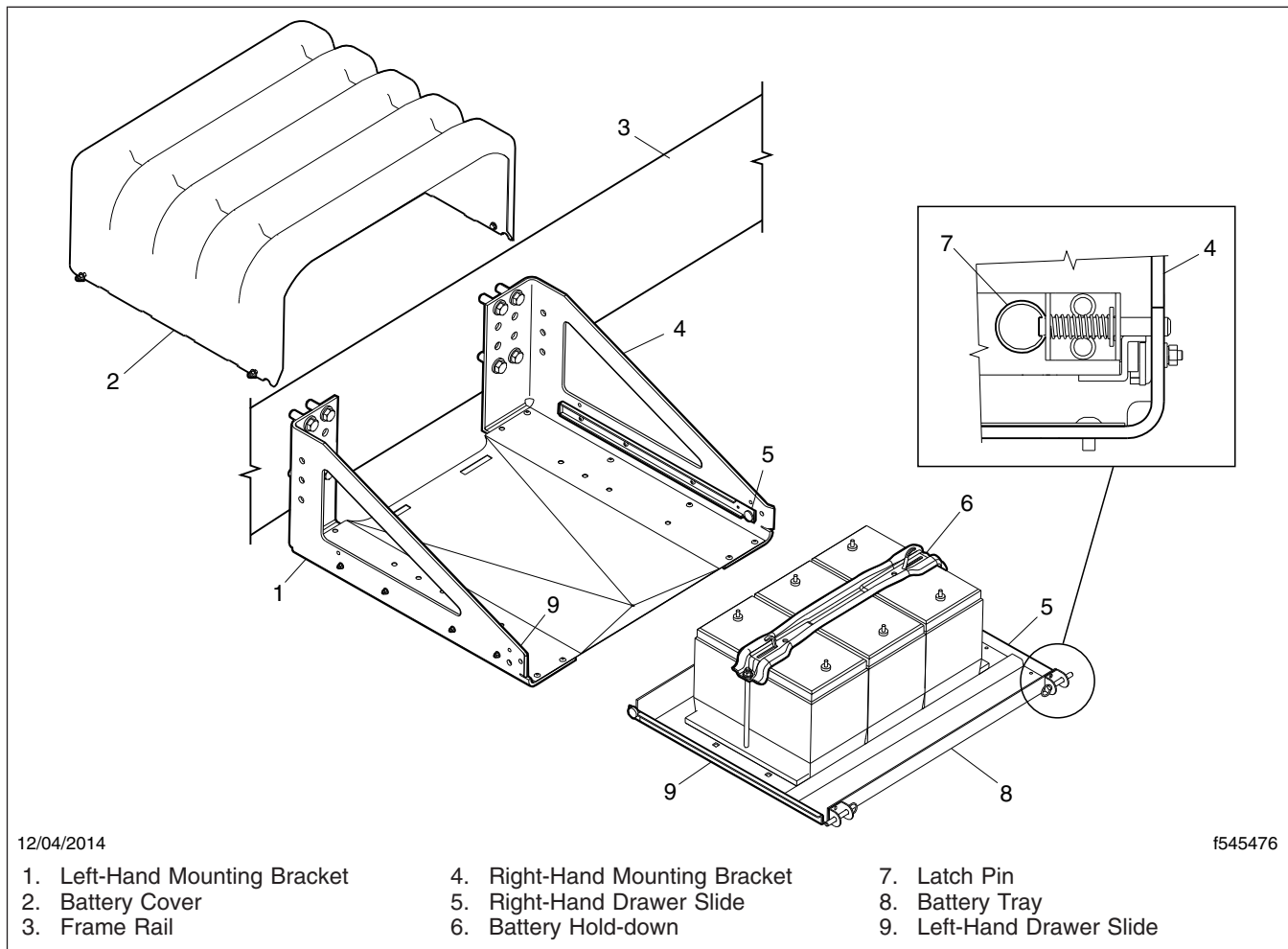


Fig. 1, Battery Box Assembly

4. Free the battery cables from the side of the battery box.
5. Slide the drawer out until it stops, then lift up on the front edge and pull the drawer completely out.
6. Remove the eight sets of capscrew, nuts, and washers that attach the battery box to the frame rail.
7. Remove the battery box.
8. Remove the existing battery drawer slides.

9. Modify the current bracket to mount the new heavy-duty slides. Use the dimensions shown in [Fig. 2](#).

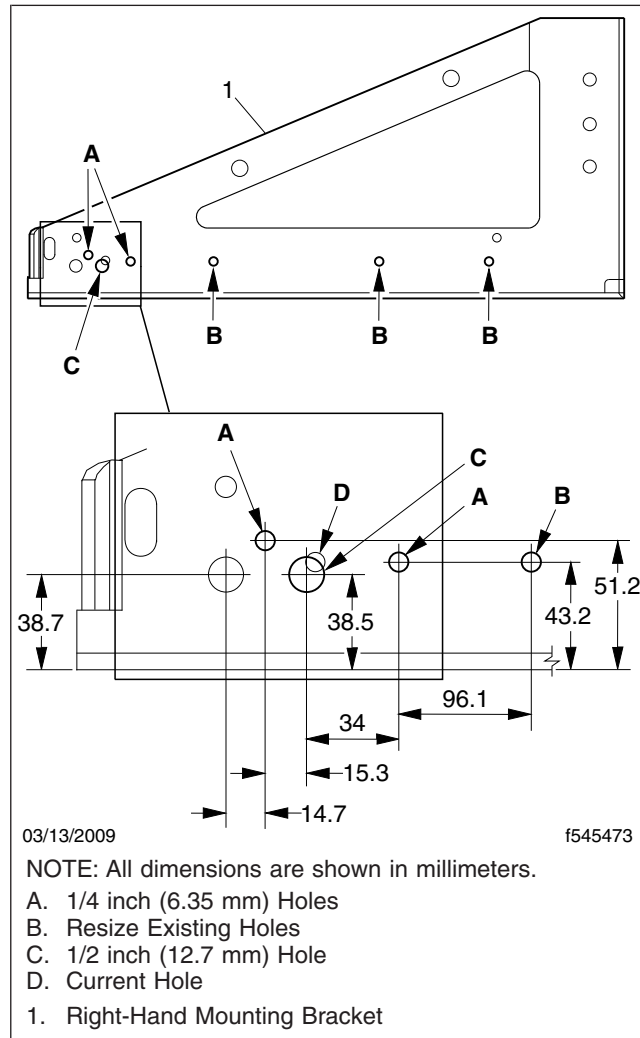


Fig. 2, Dimensions for Current and New Bracket Holes

- 9.1 Drill two new 1/4 inch (6.35 mm) holes in the bracket as shown in [Fig. 2](#), Ref. A.
 - 9.2 Drill a new 1/2 inch (12.7 mm) hole in the bracket as shown in [Fig. 2](#), Ref. C.
 - 9.3 The new heavy-duty slides use M6 fasteners. All of the current holes will need to be resized from number 10 to 1/4 inch (6.35 mm). See [Fig. 2](#), Ref. B.
10. Using M6 fasteners, mount the new battery drawer slides to the brackets. See [Fig. 3](#). Tighten the fasteners 60 lbf·in (678 N·cm). If required, install the striker plates.
11. Install the battery drawer.
- 11.1 If needed, resize the existing holes to 1/4 inch (6.35 mm). See [Fig. 4](#).
 - 11.2 Install the new drawer slides. Tighten the drawer slide bolts 60 lbf·in (678 N·cm).

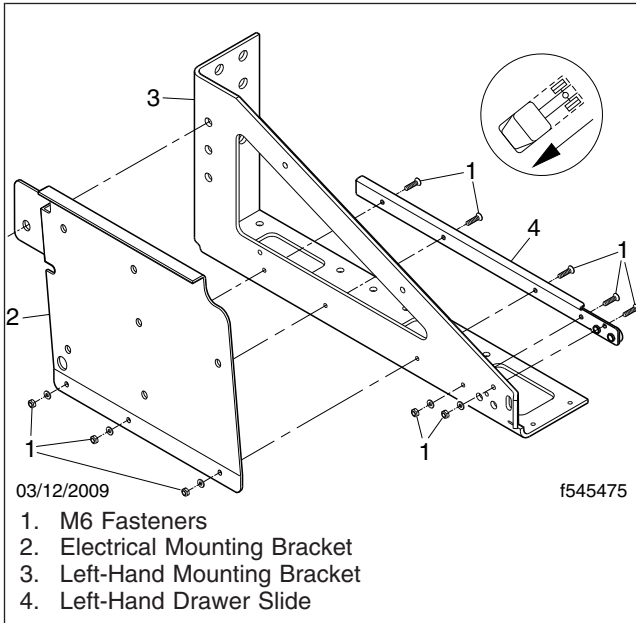


Fig. 3, Mounting Battery Drawer Slides

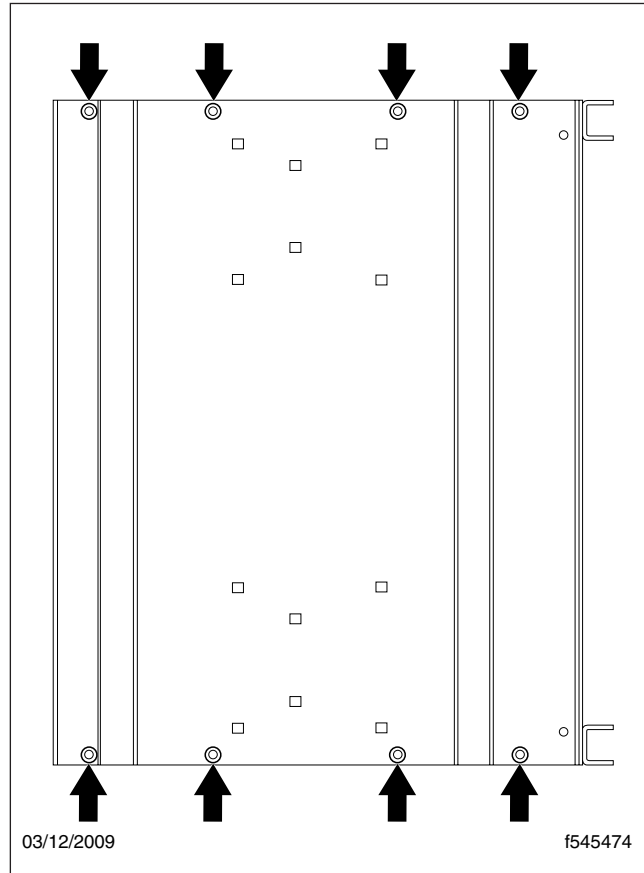


Fig. 4, Resizing Existing Battery Tray Holes

11.3 Place the plastic caps over the exposed threads of the bolts. See [Fig. 5](#).

12. For vehicles equipped with EPA07 engines, resize the three lower holes of the electrical mounting bracket to 1/4 inch (6.35 mm). This bracket shares fasteners with the battery drawer slides. See [Fig. 6](#).
 13. Install the electrical mounting bracket using M6 fasteners. Tighten the fasteners 60 lbf·in (678 N·cm).
 14. Line up the holes in the battery box with the holes in the frame rail.
 15. Install the eight sets of capscrews, nuts, and washers that attach the battery box to the frame rail. **Do not tighten.**
 16. Install the battery drawer in the slides.
 17. Test the drawer operation by sliding it in and out several times. Adjust the mount brackets as necessary.
- NOTE: The drawer latch pins should snap into the locked position without extra effort.
18. Tighten the mount bolts 128 lbf·ft (173 N·m).
 19. Place the batteries in the battery box with the terminals in the proper position. Make sure the batteries rest level in the box. See [Section 54.10, Subject 130](#) of the *Saf-T-Liner C2 School Bus Workshop Manual* for procedures to correctly install the batteries.

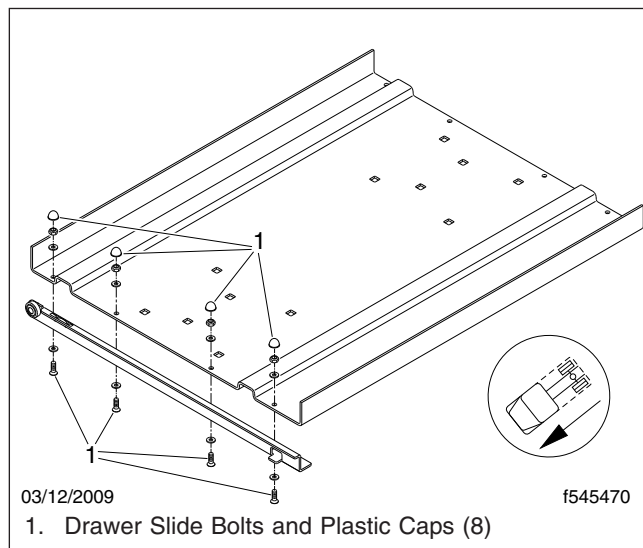


Fig. 5, Drawer Slide Assembly

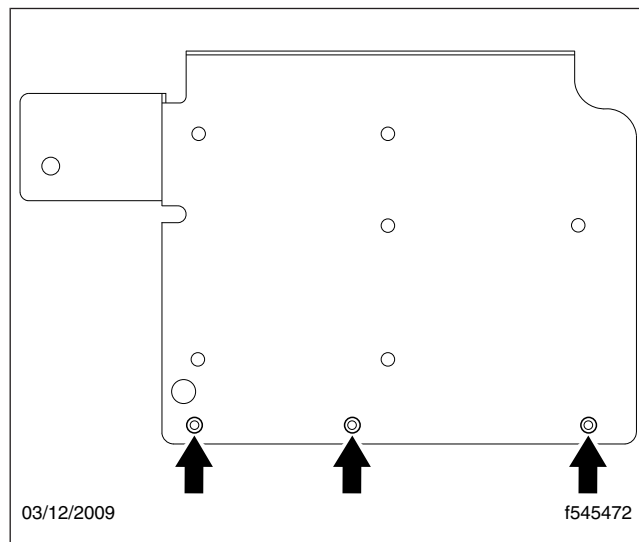


Fig. 6, Modifying the Electrical Mounting Bracket

NOTICE

Do not overtighten the battery hold-downs. Overtightening could damage the batteries.

20. Install the battery hold-downs. Tighten each nut 10 lbf-ft (14 N·m).

21. Return the battery drawer to the closed position and close the access door.

Warranty

Normal warranty applies, provided that a failure has occurred. See [Table 3](#) for damage code and labor allowance information, and refer to this bulletin by number in the story of the claim.

| OWL VMRS Codes and Labor Allowance | | | | | |
|------------------------------------|----------------|------------|-----------|---------------------------------|-------------|
| Primary Failed Part | Component Code | Cause Code | SRT Code | Description | Time: Hours |
| 06-71499-000 | 014-005-056 | 12 | 290-5005A | Drawer Slides, Battery Box, R/R | 2.2 |
| 06-71499-001 | | | | | |
| 06-71499-002 | | | | | |
| 06-71499-003 | | | | | |

Table 3, OWL VMRS Codes and Labor Allowance