

1 3 04-15



## Service Information Bulletin

SUBJECT	DATE
Diagnostic Tests	March 2015

### Additions, Revisions, or Updates

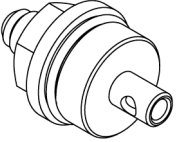
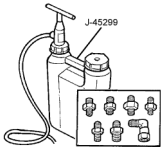
Publication Number / Title	Platform	Section Title	Change
DDC-SVC-MAN-0084	DD Platform	Priming of the Lubrication System To Check For Leaks In The Upper Portion Of The Engine	This is a new section. Add under "Diagnostic Tests."



13400 Outer Drive, West, Detroit, Michigan 48239-4001  
 Telephone: 313-592-5000  
[www.demanddetroit.com](http://www.demanddetroit.com)

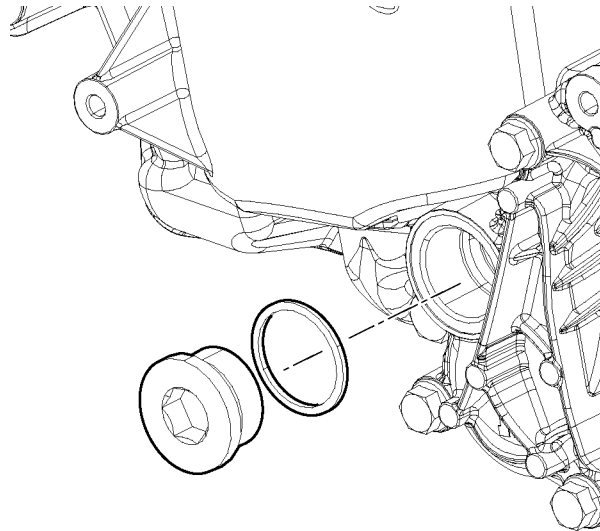
## 2 Priming of the Lubrication System to Check for Leaks in the Upper Portion of the Engine

Table 1.

Detroit Diesel Tools Needed to Perform This Procedure		
J-49181	Oil System Priming Adapter	 d580037
J-45299	Oil System Priming Pump	 d580151

Check as follows:

- Using a 17 mm Allen tool, remove the Allen head plug from the oil priming port on the oil coolant module.

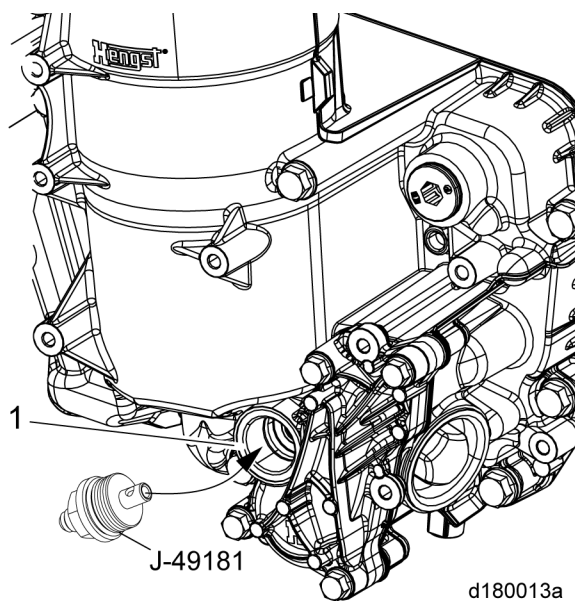


d180025

- If equipped with an oil sample valve, remove the valve and washer.

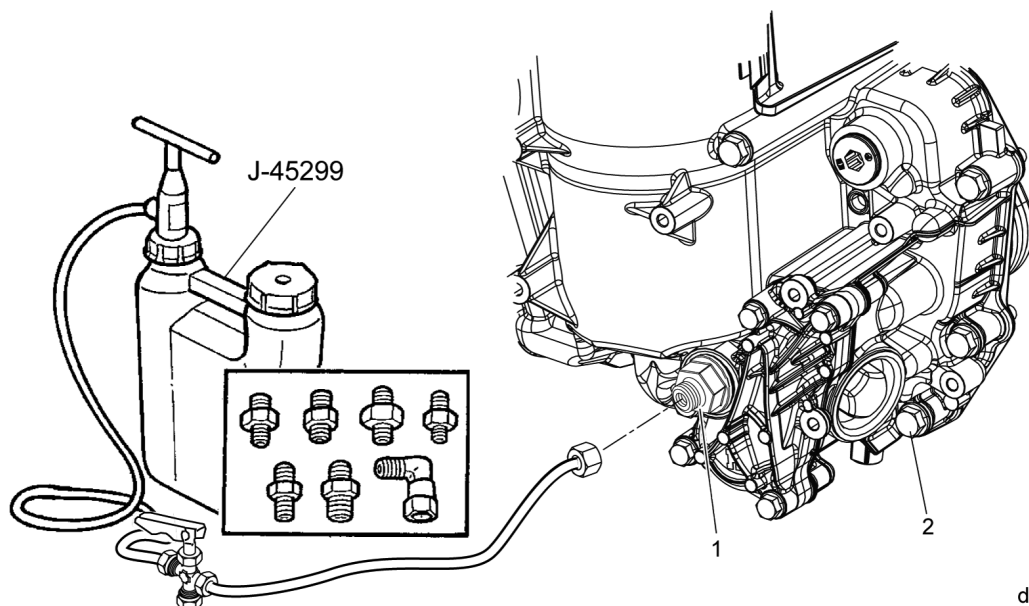
**NOTE:** Tool J-49181 is used to adapt the J-45299 priming pump.

- Install oil system priming adaptor tool (J-49181) into the oil priming port (1) in the oil coolant module.

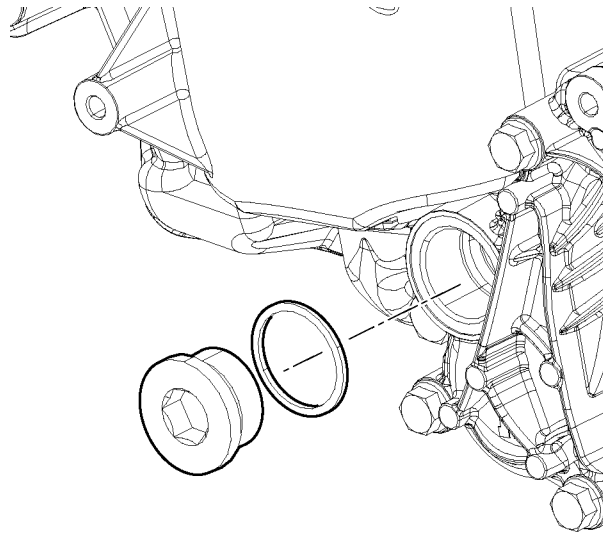


**NOTICE:** If chassis application prevents access, a 90-degree or a 45-degree pipe fitting (1/4" NPT) can be used (if needed) for access.

4. Install the engine pre-lube kit (J-45299) to the fitting adaptor (1).



5. Remove the rocker cover. Refer to section "Removal of the Rocker Cover".
6. Fill the canister with four quarts of oil.
7. Open the valve on the primer and start pumping.
8. Inspect the rockers and engine brake solenoids for excessive oil. If leaks are present, repair the leaks as necessary.
9. Install the rocker cover; Refer to section "Installation of the Rocker Cover".
10. Close the valve on the priming tool and loosen the fitting; do not completely remove it from the adaptor.
11. Remove the priming adaptor from the oil coolant module with the line attached to keep the oil from flowing out of the module.



d180025

12. Install the Allen head plug or oil sample valve to the module and torque to 70 to 80 N·m (51 to 59 lb·ft).