

1 7 08-15



Service Information Bulletin

SUBJECT	DATE
High Pressure Fuel Pump Camshaft Oil Seal - Two-Filter System	July 2015

Additions, Revisions, or Updates

Publication Number / Title	Platform	Section Title	Change
DDC-SVC-MAN-0082	DD Platform EUROIV	Removal of the High Pressure Fuel Pump Camshaft Oil Seal - Two-Filter System	These are new sections.
DDC-SVC-MAN-0182		Installation of the High Pressure Fuel Pump Camshaft Oil Seal - Two-Filter System	
DDC-SVC-MAN-S082			
DDC-SVC-MAN-S182			

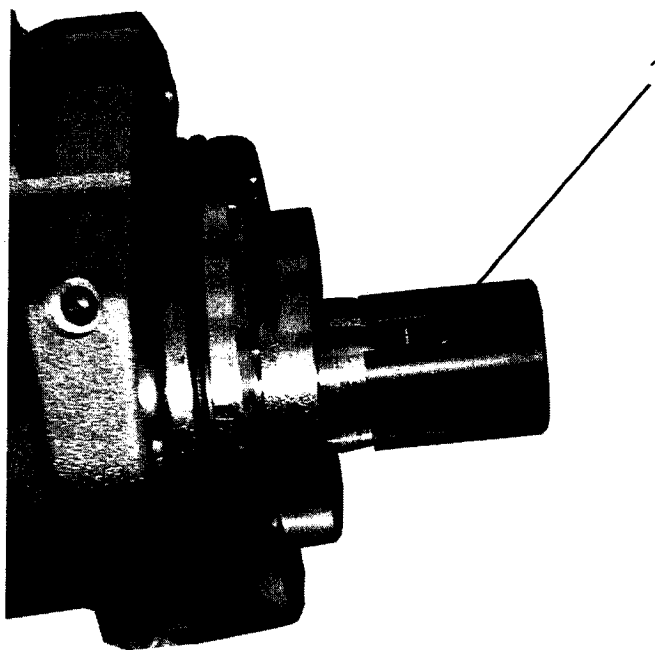


13400 Outer Drive, West, Detroit, Michigan 48239-4001
 Telephone: 313-592-5000
www.demanddetroit.com

2 Removal of the High Pressure Fuel Pump Camshaft Oil Seal - Two-Filter System

Remove as follows:

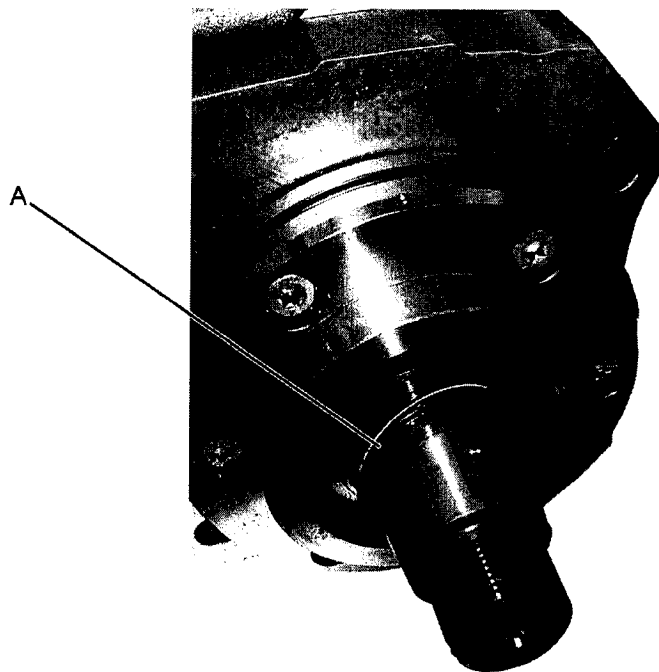
1. Shut off the engine, apply the parking brake, chock the wheels and perform any other applicable safety steps.
2. Remove the high pressure fuel pump from the engine. Refer to section "Removal of the High Pressure Fuel Pump – Two-Filter System".
3. Remove the high pressure fuel pump drive gear from the high pressure fuel pump. Refer to section "Removal of the High Pressure Fuel Pump Drive Gear -Two-Filter System".
4. If equipped with a key, remove the high pressure fuel pump key from the high pressure fuel pump camshaft. If equipped with a pin, Refer to section "Removal of the High Pressure Fuel Pump Locating Pin - Two-Filter System".
5. Install the high pressure fuel pump camshaft oil seal protector tool (1) on to the high pressure fuel pump.



d070104

Table 1.

NOTE: While installing the camshaft oil seal removal tool to the camshaft oil seal, the oil seal lip (A) may rip. If the oil seal lip (A) rips, remove and discard the oil seal lip, then reinstall the camshaft oil seal removal tool.



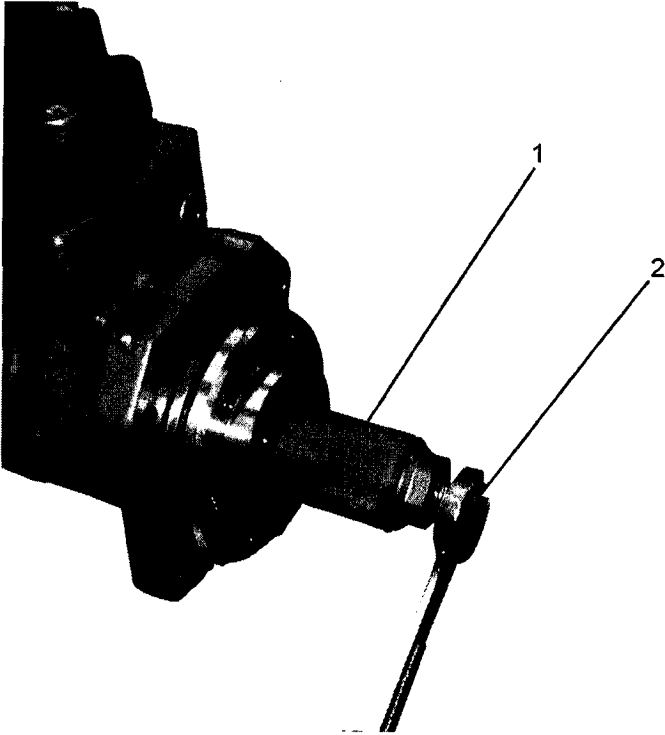
d070108

6. Position the camshaft oil seal removal tool (W470589055903) over the high pressure fuel pump camshaft until it has made contact with the camshaft oil seal. Once the camshaft oil seal removal tool (W470589055903) has made contact with the oil seal, press the removal tool firmly against the camshaft oil seal and rotate the tool clockwise by hand until the removal tool has completely screwed into the camshaft oil seal.



d070105

7. Remove the camshaft oil seal by holding the camshaft oil seal removal tool (1) and turning the camshaft oil seal removal tool bolt (2)



d070106

8. Remove the camshaft oil seal from the camshaft oil seal removal tool (W470589055903).

3 Installation of the High Pressure Fuel Pump Camshaft Oil Seal - Two-Filter System

Remove as follows:

1. Clean the face of the camshaft fuel seal, camshaft and the outside sealing area of the camshaft oil seal inside the high pressure pump.



d470285

2. Install the camshaft sleeve tool (W470589055902) on to the camshaft.



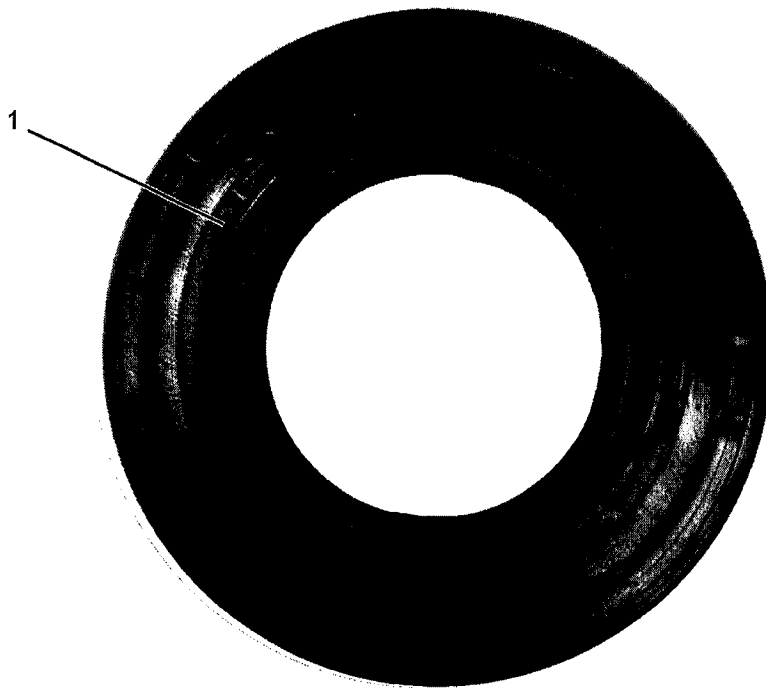
d470286

3. Lightly coat the camshaft sleeve tool (W470589055902) with clean diesel fuel.

Table 2.

NOTICE: Damage will occur if the inside of the new service camshaft oil seal is touched or handled. If the inside of the new service camshaft oil seal has been touched or handled, discard the seal and install a new seal.

NOTE: The illustration below shows the FLAT side (1) of the service camshaft oil seal.



d470306

4. Place the new service camshaft oil seal onto the camshaft sleeve tool (W470589055902) with the FLAT side of the seal facing outwards.



d470283

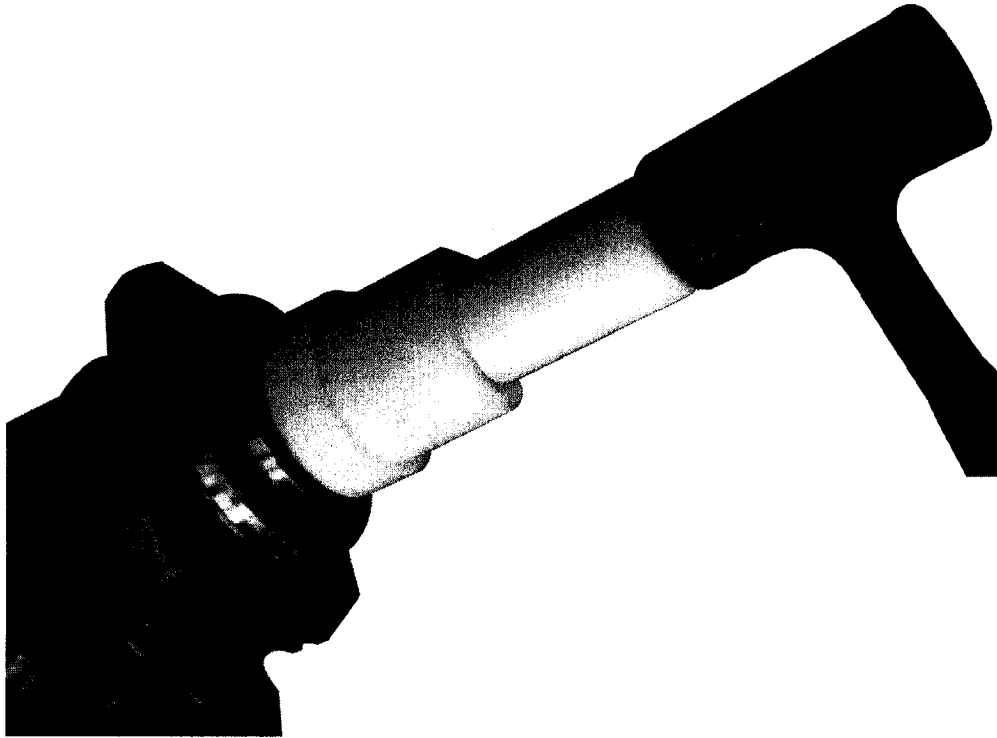
5. Using the camshaft oil seal installer tool (W470589055901), by hand, slide the camshaft oil seal inwards until the camshaft oil seal presses against the high pressure fuel pump.



d470287

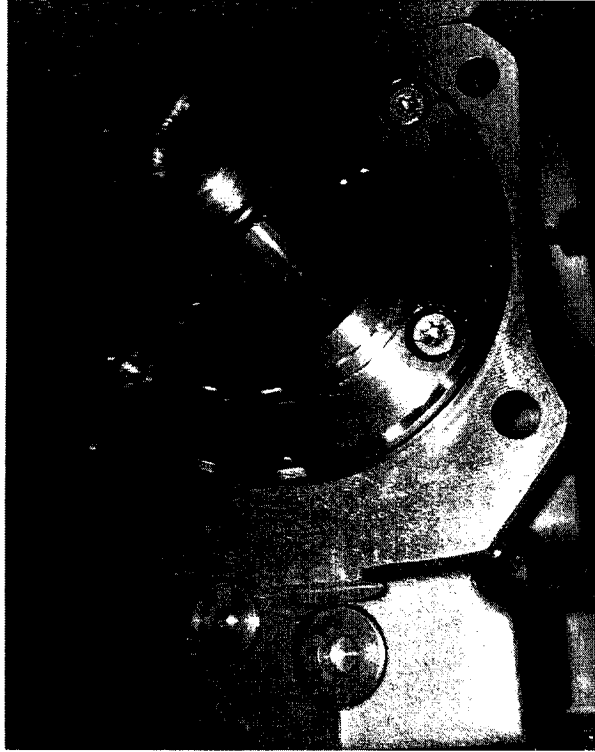
NOTE: When installing the camshaft seal onto the high pressure fuel pump, the camshaft oil seal installer tool **MUST** make contact with the high pressure fuel pump to seat the camshaft oil seal properly.

6. Remove the camshaft sleeve tool (W470589055902) from the camshaft.
7. Using a dead blow hammer, lightly tap the camshaft seal installer tool (W470589055901) until the tool makes contact with the high pressure fuel pump.



d470288

8. Inspect the camshaft oil seal, camshaft and high pressure fuel pump for damage.



d470284

NOTE: Setting the locating pin depth is critical; follow the pin installation instructions closely.

9. If equipped with the key, install the high pressure fuel pump key onto the camshaft. If equipped with a pin, Refer to section "Installation of the High Pressure Fuel Pump Locating Pin -Two-Filter System".
10. Install the high pressure fuel pump drive gear from the high pressure fuel pump. Refer to section "Installation of the High Pressure Fuel Pump Drive Gear - Two-Filter System".



WARNING: PERSONAL INJURY

All parts provided within this kit must be installed in the proper locations, and **MUST** be fastened to the specified torque. Failure to properly torque hardware/components will result in failure of a high pressure fuel feed line, resulting in possible fire and/or personal injury.



WARNING: PERSONAL INJURY

All parts provided within this kit are single-use items and cannot be re-used. Re-use of hardware/component items may result in the failure of a high pressure fuel line, resulting in possible fire and/or personal injury.



WARNING: PERSONAL INJURY

All hardware/components must be installed in the proper locations, and **MUST** be fastened to the specified torque. Failure to properly torque hardware/components will result in failure of a high pressure fuel feed line, resulting in possible fire and/or personal injury.

11. Install the high pressure fuel pump onto the engine. Refer to section "Installation of the High Pressure Fuel Pump – Two Filter System".