



Service Bulletin

PRELIMINARY INFORMATION

Subject: Rear Air Leveling Compressor Inoperative With No DTC's

Models: 2015 Chevrolet Suburban, Tahoe
2015 GMC Yukon, Yukon XL
2 Wheel Drive Models Only
Equipped with ALL of the following RPOs: Z85, L83, AVF, BTM and K34
Built before 3/16/2015

The following diagnosis might be helpful if the vehicle exhibits the symptom(s) described in this PI.

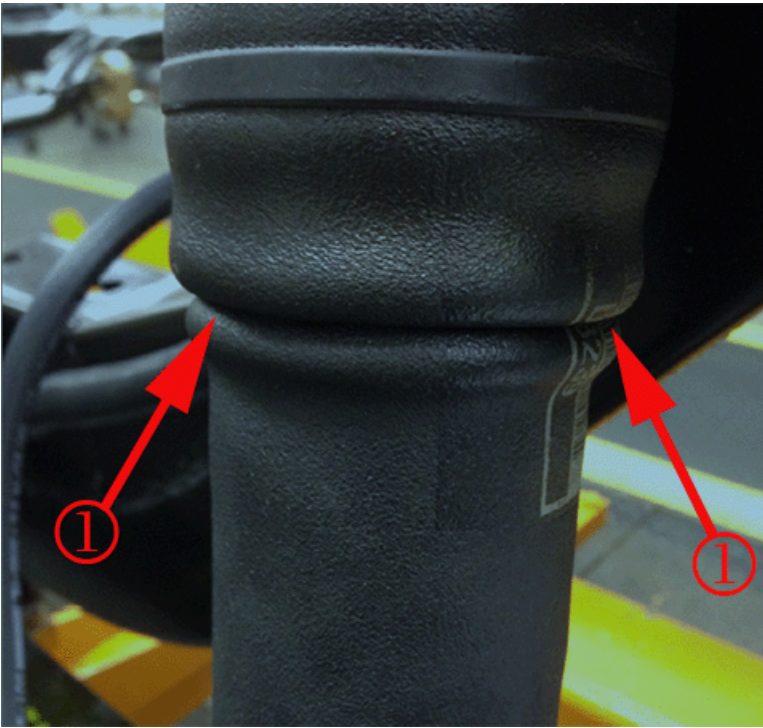
Condition/Concern

Some owners may comment when they load the rear of their vehicle or attach a trailer, the rear air leveling compressor will not turn on to raise and level the truck. When performing normal diagnostics, there will be no DTCs or messages on the DIC and the air compressor will turn on and raise the rear of the vehicle if commanded with the scan tool.

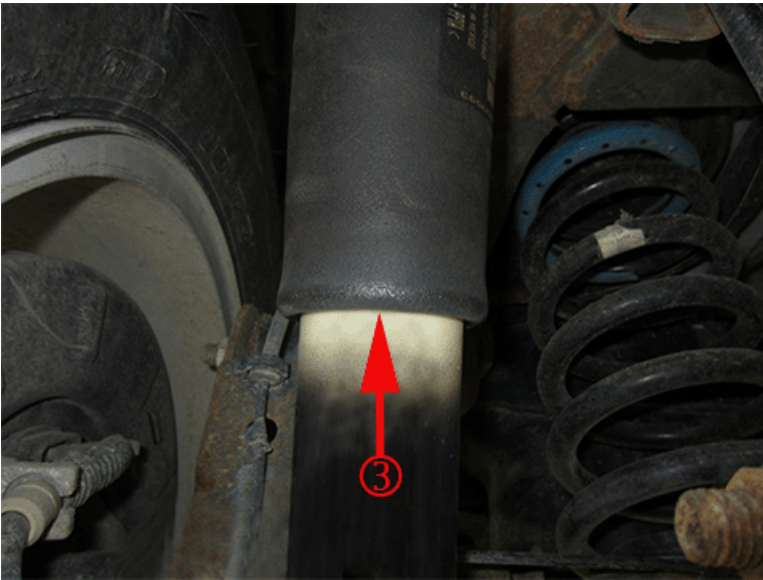
Recommendation/Instructions

Engineering has released updated ECM calibrations to address this issue. To repair this concern, please perform the following inspections and programming procedure:

1. With the vehicle on flat level ground or on a drive-on alignment hoist, inspect both rear shock air bags for being kinked or trapped, as shown below in Photo 1. Photo 2 is of a good rear shock air bag that is not kinked or trapped. If a rear shock air bag is kinked or trapped the shock will need to be replaced



2. Using the scan tool, command the rear air leveling compressor on, to inflate the shock air bags. Command the compressor on long enough to raise the rear of the vehicle approximately 1 or 2 inches.
3. Lift the vehicle and support it by the frame so the rear axle is suspended. This will extend the rear shocks causing the air bags to extend. Inspect the lower portion of the air bag, as shown below (3), for any cracks, tears, peeling, material loss, etc. Some polishing of the lower roll of the air bag is normal. If any damage is found to a rear shock air bag, replace that shock.



4. Reprogram the ECM with the latest calibrations available in TIS2WEB as of 3/16/15
5. Only perform this step if the "suspension position calibration" procedure had previously been done during diagnosis. With the vehicle parked on a flat, level surface, use the scan tool to turn on the exhaust valve to let out any excessive pressure from the air bags. This may take several minutes. Now perform the Suspension Position Calibration (With Z85) found in SI.
6. Verify the rear air leveling suspension operates correctly by placing enough weight in the rear of the truck to lower the rear by at least 1 inch (25.4mm). With the engine running, after a short time (less than 1 minute), the air compressor will turn on and begin to raise the rear of the truck.

Warranty Information

For vehicles repaired under warranty use:

Labor Operation	Description	Labor Time
2880998*	Reprogram The ECM, Inspect Rear Shock Air Bags, And Test System.	0.8 hr
* This is an unique labor operation for bulletin use only. This will not be published in the Labor Time Guide.		

Please follow this diagnostic or repair process thoroughly and complete each step. If the condition exhibited is resolved without completing every step, the remaining steps do not need to be performed.

GM bulletins are intended for use by professional technicians, NOT a "do-it-yourselfer". They are written to inform these technicians of conditions that may occur on some vehicles, or to provide information that could assist in the proper service of a vehicle. Properly trained technicians have the equipment, tools, safety instructions, and know-how to do a job properly and safely. If a condition is described, DO NOT assume that the bulletin applies to your vehicle, or that your vehicle will have that condition. See your GM dealer for information on whether your vehicle may benefit from the information.



WE SUPPORT VOLUNTARY TECHNICIAN CERTIFICATION