



Service Bulletin

PRELIMINARY INFORMATION

Subject: Front Row Seat Back Appears To Lean Outward (Seat Cover Improperly Installed)

Models: 2015 Cadillac Escalade Models
2014 Chevrolet Silverado 1500
2015 Chevrolet Silverado, Suburban, Tahoe
2014 GMC Sierra 1500
2015 Sierra, Yukon Models

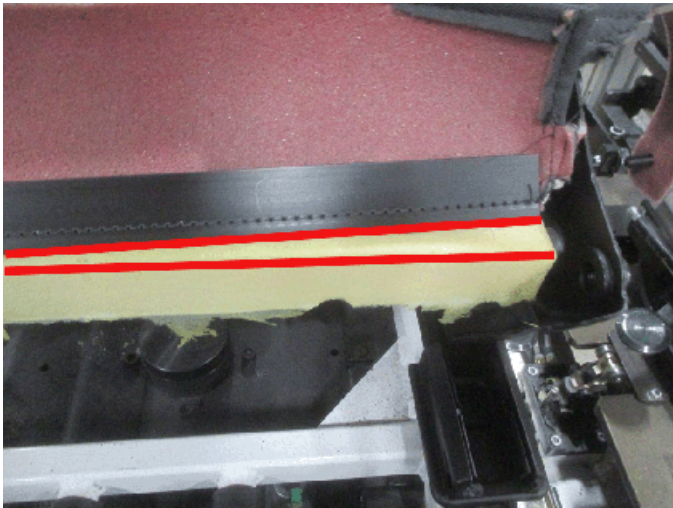
The following diagnosis might be helpful if the vehicle exhibits the symptom(s) described in this PI.

Condition/Concern

Some owners may perceive that the front driver's or passenger's seat back may lean or be turned outward, as shown below.



This concern could be caused by the seat bottom trim cover not installed correctly onto the cushion/foam, as shown below. If the seat cover is not completely and squarely installed onto the cushion/foam, it will give the appearance that the seat back is leaning or turned outward.



Recommendation/Instructions

Remove the seat bottom trim cover and reinstall it completely and squarely to the cushion/foam, as shown below



Warranty Information

Labor Operation	Description	Labor Time
7023350	Front Seat Cushion Cover and Pad Replacement	Use Published Labor Operation Time

Please follow this diagnostic or repair process thoroughly and complete each step. If the condition exhibited is resolved without completing every step, the remaining steps do not need to be performed.

GM bulletins are intended for use by professional technicians, NOT a "do-it-yourselfer". They are written to inform these technicians of conditions that may occur on some vehicles, or to provide information that could assist in the proper service of a vehicle. Properly trained technicians have the equipment, tools, safety instructions, and know-how to do a job properly and safely. If a condition is described, DO NOT assume that the bulletin applies to your vehicle, or that your vehicle will have that condition. See your GM dealer for information on whether your vehicle may benefit from the information.



WE SUPPORT VOLUNTARY TECHNICIAN CERTIFICATION