



# Service Bulletin

## PRELIMINARY INFORMATION

**Subject:** Changing to Camper Outside Rearview Mirrors

**Models:** 2014-2015 Chevrolet Silverado 1500  
2015 Chevrolet Silverado 2500  
2014-2015 GMC Sierra 1500  
2015 GMC Sierra 2500

**Attention:** Any changes or modifications to the vehicle should be first reviewed with the customer, and then noted on the repair order with customer approval. This is for customer satisfaction; this is not a warranty procedure. GM does not support or warranty modifications to vehicles. Adding camper mirrors to trucks built without them will increase the amount of vibration or shake experienced in the mirror. This PI also applies to any of the above models that may be Export vehicles.

*This PI has been revised to update the Models, Condition/Concerns, Recommendation/Instructions, Parts Information and Warranty Information. Please discard PI1255A.*

### Condition/Concern

Some customers may request to have camper style mirrors installed on their vehicle. The new electrical architecture for the Silverado and Sierra has made swapping mirrors a more involved procedure than with previous models.

The recommendation has been divided into two main groups (Group 1 and Group 2) depending on the model of the truck. Please make sure the correct group below is used, because not all camper mirrors can be installed on all trucks. After selecting the correct group, find and use the chart for the mirrors your truck was built with. This will determine which camper mirrors can be installed.

The chart will also tell you what needs to be done to install the camper mirrors on the vehicle. Listed below are the main steps that may need to be done.

Camper Mirror Styles:

#### DF2

Base Manual Camper Mirror with no lighting or power adjustments

#### DPN

Power adjustable, Manual Folding and Extendable Camper Mirror (Note: the DPNs listed in group 1 and 2 are different style mirrors and are NOT interchangeable)

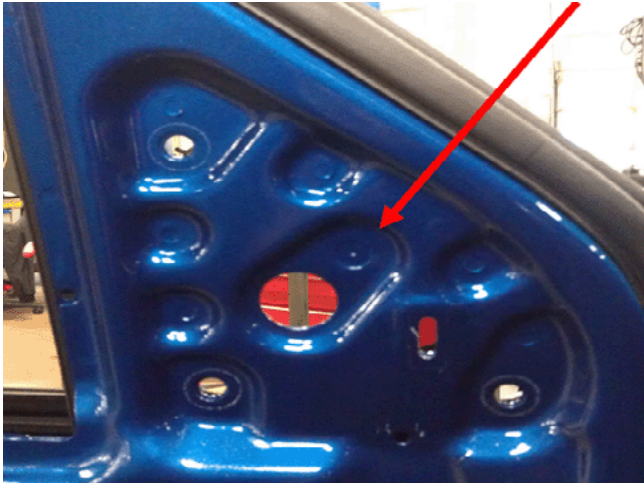
#### DQS

Power adjustable, Power Folding, Manual extendable and Memory Camper Mirror (Note: These mirrors are ONLY recommended to upgrade for Flint built trucks listed in Group 2)

### Steps Required to Install Camper Mirrors

- Replacing the door harnesses as required.
- Replacing the mirror switch as required.
- Drilling a 4th mirror mounting hole in the door (Non camper mirrors use 3 mounting holes. Camper mirrors require 4 mounting holes). When drilling the hole in the door, the inner layer of the door sheet metal already has the hole and can be used as a guide to drill through the remaining layers of sheet

metal, as shown below in Picture 1.



1. Mirror mounting hole drill point

## Recommendation/Instructions

### Group 1

Models:

- 2014 Chevrolet Silverado 1500
- 2015 Chevrolet Silverado 2500 (except RPO AVF)
- 2014 GMC Sierra 1500
- 2015 GMC Sierra 2500 (except RPO AVF)

Determine what RPO mirrors the truck was built with and refer to the appropriate mirror chart below to determine what camper mirrors can be installed and what needs to be done for the installation, including parts.

### **Group 1: If Equipped with DE2 Mirrors**

| Upgradable to DF2 Camper Mirrors           |     |     |
|--|-----|-----|
|  | DE2 | DF2 |
| Mirror Features                            |     |     |
| Power Folding                              | N/A | N/A |
| Power-Adjustable (excludes spotter mirror) | N/A | N/A |
| Puddle Lights                              | N/A | N/A |
| Integrated Turn Signal Indicators          | N/A | N/A |
| Electro-Chromatic                          | N/A | N/A |
| Memory Function                            | N/A | N/A |
| Heated                                     | N/A | N/A |
| Auxiliary Cargo Lamps                      | N/A | N/A |
| Amber Auxiliary Clearance Lamp             | N/A | N/A |

| Install Guide                    |                             |                            |                       |                      |
|----------------------------------|-----------------------------|----------------------------|-----------------------|----------------------|
| Series                           | Mirror RPO From The Factory | Drilling 4th Mounting Hole | Replace Mirror Switch | Replace Door Harness |
| 1500/2500 All except Flint Built | DE2                         | YES                        | N/A                   | N/A                  |
| 1500/2500 Flint Built            | DE2                         | NO                         | N/A                   | N/A                  |

| Group 1 Part Information For DE2 to DF2 Mirror Swap |     |       |   |       |
|---|-----|-------|---|-------|
| Part Number   | RPO | Usage | Description                                 | Color |
| 22820395  | DF2 | ALL   | LEFT - O/S BASE MIRROR, WIDE LOAD, FOLDING  | Black |
| 22820396  | DF2 | ALL   | RIGHT - O/S BASE MIRROR, WIDE LOAD, FOLDING | Black |

**Group 1: If Equipped with DL3 or DL8 Mirrors**

| Upgradable to DPN Camper Mirrors           |     |     |     |
|--|-----|-----|-----|
| Features                                   | DL3 | DL8 | DPN |
| Power Folding                              | X   |     |     |
| Power-Adjustable (excludes spotter mirror) | X   | X   | X   |
| Puddle Lights                              | X   |     |     |
| Integrated Turn Signal Indicators          | X   |     | X   |
| Electro-Chromatic                          | X   |     |     |
| Memory Function                            | X   |     |     |
| Heated                                     | X   | X   | X   |

| Install Guide                            |                             |                            |                       |                      |
|--|-----------------------------|----------------------------|-----------------------|----------------------|
| Series                                   | Mirror RPO From The Factory | Drilling 4th Mounting Hole | Replace Mirror Switch | Replace Door Harness |
| 1500/2500 With A45 except Flint Built    | DL3                         | Yes                        | No*                   | As Required**        |
| 1500/2500 Without A45 except Flint Built | DL3                         | Yes                        | Yes                   | As Required**        |
| 1500/2500 With A45 Flint Built           | DL3                         | No                         | No*                   | As Required**        |
| 1500/2500 Without A45 Flint Built        | DL3                         | No                         | Yes                   | As Required**        |

|  |     |     |    |               |
|--|-----|-----|----|---------------|
| 1500/2500 With A45 except Flint Built    | DL8 | Yes | No | As Required** |
| 1500/2500 Without A45 except Flint Built | DL8 | Yes | No | As Required** |
| 1500/2500 With A45 Flint Built           | DL8 | No  | No | As Required** |
| 1500/2500 Without A45 Flint Built        | DL8 | No  | No | As Required** |

\*The drivers switch should not be replaced and the power fold button will become non-functional.

\*\*Due to content differences, some vehicles may require the drivers and passengers door harnesses to be replaced. To determine if the door harness needs to be replaced, inspect connector X510 (Pins 5 and 13) and connector X610 (pins 5 and 13). If ANY of the cavities are empty, the door harnesses MUST be replaced.

| Group 1 Part Information for DL3 or DL8 to DPN Mirror Swap |             |       |   |       |
|--|-------------|-------|---|-------|
| Part Number  | RPO         | Usage | Description   | Color |
| 22754405   | without A45 | N/A   | SWITCH, O/S RR VIEW MIR R/CON   | N/A   |
| 22820397   | DPN         | All   | LEFT - O/S MIRROR, WIDE LOAD, MANUAL FOLDING AND EXTENDING, VERTICAL GLASS, HEATED, TURN SIG IND  | Black |
| 22820398   | DPN         | All   | RIGHT - O/S MIRROR, WIDE LOAD, MANUAL FOLDING AND EXTENDING, VERTICAL GLASS, HEATED, TURN SIG IND | Black |

### Installation Instructions

1. Remove the front side door trim. Refer to Front Side Door Trim Replacement in SI.
2. Remove the front side door window garnish molding. Refer to Front Side Door Window Garnish Molding Replacement in SI.
3. Remove the outside rearview mirror nuts, disconnect electrical and remove the mirror.
4. If necessary, drill out the fourth hole (see Picture 1 above) and then apply GM Vehicle Care Super Lube with PTFE to the hole.
5. Install the new mirror, mirror nuts and connect the electrical.
6. Install new door harness (if necessary).
7. Install the new switch to the bezel.
8. Install the front side door window garnish molding. Refer to Front Side Door Window Garnish Molding Replacement in SI.
9. Install the front side door trim. Refer to Front Side Door Trim Replacement in SI.

### Group 2

Models:

- 2015 Chevrolet Silverado 1500
- 2015 Chevrolet Silverado 2500 (With RPO AVF)
- 2015 GMC Sierra 1500
- 2015 GMC Sierra 2500 (With RPO AVF)

Determine what RPO mirrors the truck was built with and select that mirror chart below to determine what camper mirrors can be installed and what needs to be done for the installation.

### **Group 2: If Equipped with DE2 Mirrors**

**Upgradable to DF2 Camper Mirrors**

|  | DE2 | DF2 |
|--|-----|-----|
| <b>Mirror Features</b>                     |     |     |
| Power Folding                              | N/A | N/A |
| Power-Adjustable (excludes spotter mirror) | N/A | N/A |
| Puddle Lights                              | N/A | N/A |
| Integrated Turn Signal Indicators          | N/A | N/A |
| Electro-Chromatic                          | N/A | N/A |
| Memory Function                            | N/A | N/A |
| Heated                                     | N/A | N/A |
| Auxiliary Cargo Lamps                      | N/A | N/A |
| Amber Auxiliary Clearance Lamp             | N/A | N/A |

| Install Guide                    |                             |                            |                       |                      |
|----------------------------------|-----------------------------|----------------------------|-----------------------|----------------------|
| Series                           | Mirror RPO From The Factory | Drilling 4th Mounting Hole | Replace Mirror Switch | Replace Door Harness |
| 1500/2500 All except Flint Built | DE2                         | YES                        | N/A                   | N/A                  |
| 1500/2500 Flint Built            | DE2                         | NO                         | N/A                   | N/A                  |

| Group 2 Part Information for DE2 to DF2 Mirror Swap |     |                   |   |       |
|---|-----|-------------------|---|-------|
| Part Number   | RPO | Usage             | Description                                 | Color |
| 22820395  | DF2 | All               | LEFT — O/S BASE MIRROR, WIDE LOAD, FOLDING  | Black |
| 22820396  | DF2 | All except Diesel | RIGHT — O/S BASE MIRROR, WIDE LOAD, FOLDING | Black |
| 23457213  | DF2 | With Diesel       | RIGHT — O/S BASE MIRROR, WIDE LOAD, FOLDING | Black |

**Group 2: If Equipped with DL8 or DL3 Mirrors**

| Upgradable to DPN Camper Mirrors  |     |     |     |
|---|-----|-----|-----|
| <b>Note: Flint built trucks equipped with factory DL3 mirrors are upgradable to the DQS camper mirrors, see next chart.</b> |     |     |     |
| Features  | DL3 | DL8 | DPN |
| Power Folding   | X   |     |     |

|  |   |   |   |
|--|---|---|---|
| Power-Adjustable (excludes spotter mirror) | X | X | X |
| Puddle Lights                              | X |   |   |
| Integrated Turn Signal Indicators          | X |   | X |
| Electro-Chromatic                          | X |   |   |
| Memory Function                            | X |   |   |
| Heated                                     | X | X | X |
| Auxiliary Cargo Lamps                      |   |   | X |
| Amber Auxiliary Clearance Lamp             |   |   | X |

| Install Guide   |                             |                            |                       |                      |
|---|-----------------------------|----------------------------|-----------------------|----------------------|
| Series  | Mirror RPO From The Factory | Drilling 4th Mounting Hole | Replace Mirror Switch | Replace Door Harness |
| 1500/2500 With A45 except Flint Built   | DL8                         | Yes                        | No                    | As Required**        |
| 1500/2500 Without A45 except Flint Built  | DL8                         | Yes                        | No                    | As Required**        |
| 1500/2500 With A45 except Flint Built   | DL8                         | No                         | No                    | As Required**        |
| 1500/2500 Without A45 except Flint Built  | DL8                         | No                         | No                    | As Required**        |
|   |                             |                            |                       |                      |
| 1500/2500 With A45 except Flint Built   | DL3                         | Yes                        | No*                   | As Required**        |
| 1500/2500 Without A45 except Flint Built  | DL3                         | Yes                        | Yes                   | As Required**        |
| 1500/2500 With A45 except Flint Built   | DL3                         | No                         | No*                   | As Required**        |
| 1500/2500 Without A45 except Flint Built  | DL3                         | No                         | Yes                   | As Required**        |
| <p>*The drivers switch should not be replaced and the power fold button will become non-functional.</p> <p>**Due to content differences, some vehicles may require the drivers and passengers door harnesses to be replaced. To determine if the door harness needs to be replaced, inspect connector X510 (Pins 5 and 13) and connector X610 (pins 5 and 13). If ANY of the cavities are empty, the door harnesses MUST be replaced.</p> |                             |                            |                       |                      |

| Group 2 Part Information for DL3 or DL8 to DPN Mirror Swap |             |       |                               |       |
|--|-------------|-------|-------------------------------|-------|
| Part Number  | RPO         | Usage | Description                   | Color |
| 22754405   | without A45 | N/A   | SWITCH, O/S RR VIEW MIR R/CON | N/A   |

|          |     |                   |  |        |
|----------|-----|-------------------|--|--------|
| 22960561 | DPN | All               | Left — O/S MIRROR, WIDE LOAD, MANUAL FOLDING AND EXTENDING, VERTICAL GLASS HEATED, TURN SIG IND, CARGO AND CLEARANCE LAMPS   | Black  |
| 22960562 | DPN | All except diesel | RIGHT — O/S MIRROR, WIDE LOAD, MANUAL FOLDING AND EXTENDING, VERTICAL GLASS, HEATED, TURN SIG IND, CARGO AND CLEARANCE LAMPS | Black  |
| 22970653 | DPN | With diesel       | RIGHT — O/S MIRROR, WIDE LOAD, MANUAL FOLDING AND EXTENDING, VERTICAL GLASS, HEATED, TURN SIG IND, CARGO AND CLEARANCE LAMPS | Black  |
| 22960563 | DPN | All               | LEFT — O/S MIRROR, WIDE LOAD, MANUAL FOLDING AND EXTENDING, VERTICAL GLASS, HEATED, TURN SIG IND, CARGO AND CLEARANCE LAMPS  | Chrome |
| 22960564 | DPN | All except diesel | RIGHT — O/S MIRROR, WIDE LOAD, MANUAL FOLDING AND EXTENDING, VERTICAL GLASS, HEATED, TURN SIG IND, CARGO AND CLEARANCE LAMPS | Chrome |
| 22970651 | DPN | With Diesel       | RIGHT — O/S MIRROR, WIDE LOAD, MANUAL FOLDING AND EXTENDING, VERTICAL GLASS, HEATED, TURN SIG IND, CARGO AND CLEARANCE LAMPS | Chrome |

### **Group 2: If Equipped with DL3 Mirrors**

| Upgradable to DQS Camper Mirrors   |     |     |
|--|-----|-----|
| <b>Note:</b> DQS Camper Mirrors are NOT RECOMMENDED for upgrading NON-FLINT BUILT TRUCKS with DL3. It is possible to upgrade a non-Flint built truck equipped with factory DL3 to the DQS camper mirrors, but in many cases, an unacceptable amount of mirror vibration may occur, and the owner should be made aware of this before this upgrade is done. |     |     |
|  | DL3 | DQS |
| Features   |     |     |
| Power Folding  | X   | X   |
| Power-Adjustable (excludes spotter mirror)   | X   | X   |
| Puddle Lights  | X   |     |
| Integrated Turn Signal Indicators  | X   | X   |
| Electro-Chromatic  | X   |     |
| Memory Function  | X   | X   |
| Heated   | X   | X   |

|                                |  |   |
|--------------------------------|--|---|
| Auxiliary Cargo Lamps          |  | X |
| Amber Auxiliary Clearance Lamp |  | X |

| Install Guide  |                             |                            |                       |                      |
|--|-----------------------------|----------------------------|-----------------------|----------------------|
| Series   | Mirror RPO From The Factory | Drilling 4th Mounting Hole | Replace Mirror Switch | Replace Door Harness |
| 1500/2500 With A45 except Flint Built  | DL3                         | No                         | No*                   | Yes                  |
| 1500/2500 Without A45 except Flint Built   | DL3                         | No                         | Yes                   | Yes                  |
| 1500/2500 With A45 except Flint Built  | DL3                         | Yes                        | No*                   | Yes                  |
| 1500/2500 Without A45 except Flint Built   | DL3                         | Yes                        | Yes                   | Yes                  |
| *The drivers switch should not be replaced and the power fold button will become non-functional. |                             |                            |                       |                      |

| Group 2 Part Information for Flint Built for DL3 to DQS Mirror Swap |             |                   |  |        |
|---|-------------|-------------------|--|--------|
| Part Number   | RPO         | Usage             | Description  | Color  |
| 22754405  | without A45 | N/A               | SWITCH, O/S RR VIEW MIR R/CON  | N/A    |
| 22960565  | DQS         | ALL               | LEFT — O/S MIRROR, WIDE LOAD, MANUAL FOLDING AND EXTENDING, VERTICAL GLASS, HEATED, TURN SIG IND, CARGO AND CLEARANCE LAMPS  | Chrome |
| 22960566  | DQS         | All except Diesel | RIGHT — O/S MIRROR, WIDE LOAD, MANUAL FOLDING AND EXTENDING, VERTICAL GLASS, HEATED, TURN SIG IND, CARGO AND CLEARANCE LAMPS | Chrome |
| 22970649  | DQS         | With Diesel       | RIGHT — O/S MIRROR, WIDE LOAD, MANUAL FOLDING AND EXTENDING, VERTICAL GLASS, HEATED, TURN SIG IND, CARGO AND CLEARANCE LAMPS | Chrome |

### Installation Instructions

1. Remove the front side door trim. Refer to Front Side Door Trim Replacement in SI.
2. Remove the front side door window garnish molding. Refer to Front Side Door Window Garnish Molding Replacement in SI.
3. Remove the outside rearview mirror nuts, disconnect electrical and remove the mirror.
4. If necessary, drill out the fourth hole (see Picture 1 above) and then apply GM Vehicle Care Super Lube with PTFE to the hole.
5. Install the new mirror, mirror nuts and connect the electrical.
6. Install new door harness (if necessary).
7. Install the new switch to the bezel.
8. Install the front side door window garnish molding. Refer to Front Side Door Window Garnish Molding Replacement in SI
9. Install the front side door trim. Refer to Front Side Door Trim Replacement in SI.

### Parts Information



Refer to the charts for part numbers.

**Note:** Please do not contact Partech for a wiring harness, mirror or switch lookup as truck was not originally built with this configuration. Turn off the Parts Catalog VIN Filter and use all RPOs for your VIN, except for the mirror RPO. Substitute the factory mirror RPO with the mirror RPO being installed. Example: if the truck had DL8 mirrors and DPN mirrors are being installed, use DPN.

The part numbers provided are accurate at the date of initial publishing. Please refer to the Electronic Part Catalog for potential supersessions.

## Warranty Information

As the associated vehicle was modified outside of production specifications, labor and parts associated with these procedures should NOT be charged under warranty. Rather, this should be customer pay. No labor operation is provided.

GM does not support or warranty modifications to vehicles. Adding camper mirrors to trucks built without them will increase the amount of vibration or shake experienced in the mirror.

---

GM bulletins are intended for use by professional technicians, NOT a "do-it-yourselfer". They are written to inform these technicians of conditions that may occur on some vehicles, or to provide information that could assist in the proper service of a vehicle. Properly trained technicians have the equipment, tools, safety instructions, and know-how to do a job properly and safely. If a condition is described, DO NOT assume that the bulletin applies to your vehicle, or that your vehicle will have that condition. See your GM dealer for information on whether your vehicle may benefit from the information.



WE SUPPORT VOLUNTARY TECHNICIAN CERTIFICATION