



Service Bulletin

INFORMATION

Subject: Information on Tire Cold Weather Cracking

Models: 2012-2015 Buick Regal GS
2014-2015 Cadillac CTS Vsport
2012-2015 Chevrolet Camaro ZL1, Z/28
2013-2015 Chevrolet Camaro SS with RPO 1LE
2014-2015 Chevrolet Corvette, Corvette Z06, SS

Attention: Advise customers of these vehicles that they are equipped with a high performance summer-only tire that will have reduced traction performance at temperatures below approximately 40°F (5°C). GM recommends installing winter tires if driving below these temperatures. Avoid driving, moving, or test-driving vehicles equipped with high performance summer-only tires below 20°F (-7°C), as operating at these temperatures can cause damage to the tires.

This bulletin has been revised to add the 2015 model year. Please discard Corporate Bulletin Number 13-03-10-001A.

Cold Weather Operation

The vehicles referenced above are all equipped with 3 season performance tires commonly referred to as “Summer Tires.”

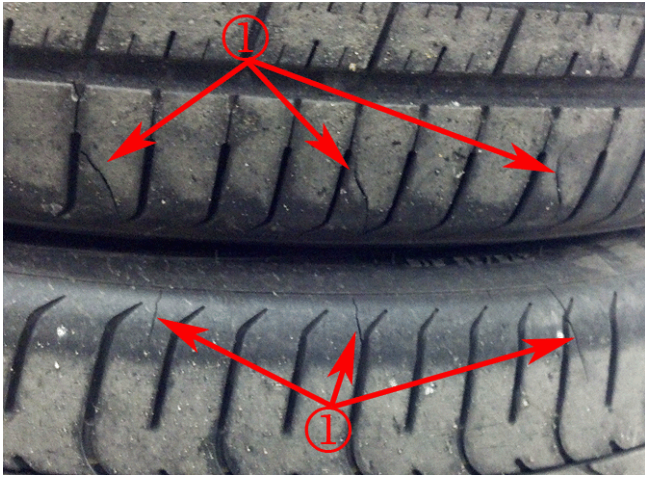
The rubber used in these tires loses flexibility and may develop surface cracks (1) in the tire tread/shoulder area at colder temperatures. Refer to the photos below for examples.

Surface cracks are cosmetic and will not result in a loss of air, however special tread and compounds used on these performance tires will cause a decrease in performance in cold climates. Driving with high performance summer tires on snow, ice or cold road surfaces may cause loss of control.

Important: While the cracking will not result in air loss, it is damaging to the tire. Tires that have been used in cold climates and exhibit tread cracks should be discarded.

Tire Surface Cracks





2014-2015 Cadillac CTS Vsport

The 2014 and 2015 Cadillac CTS Vsport is equipped with 245/40R18 and 275/35R18 Pirelli P-Zero Nero (RPO RKK) ultra-high performance summer tires.

Please advise customers that this vehicle is equipped with an ultra-high performance summer tire that will have reduced traction performance at temperatures below approximately 5°C (40°F). GM recommends installing winter tires if driving below these temperatures.

Avoid driving, moving, or test-driving CTSs equipped with Pirelli P-Zero Nero (RPO RKK) tires below -7°C (20°F) as operating at these temperatures can cause damage to the tires.

Refer to the latest version of Corporate Bulletin Number 04-03-10-013: Driving Characteristics of Rear Wheel Drive Vehicles and Available Winter Tires for further information on available replacement winter tires for cold climate operation. Additionally, dealers in the United States may call the GM Tire Program at 877-728-4737 for help with late season tire availability or substitutions.

2012-2015 Camaro Models RPO (ZL1, 1LE or Z28)

The Camaro ZL1 and RPO 1LE vehicles come with 285/35ZR20 and/or 305/35ZR20 Goodyear F1 Supercar G2 D.O.T. approved ultra high performance, track capable summer tires as standard equipment. The Camaro Z/28 is equipped with 305/30ZR19 Pirelli P Zero Trofeo R of similar capabilities.

All of these Camaro models tires are not intended to be driven on snow, ice or road surfaces below -7°C (20°F).

If the ambient temperature in your location is at or below -7°C (20°F), **DO NOT MOVE THIS VEHICLE**. Driving the vehicle, when the temperature is below -7°C (20°F), may result in surface cracks in the tread area of the tire.

Refer to the latest version of Corporate Bulletin Number 04-03-10-013: Driving Characteristics of Rear Wheel Drive Vehicles and Available Winter Tires for further information on available replacement winter tires for cold climate operation.

2014-2015 Corvette, Corvette Z06

The 2014 and 2015 Corvette is equipped with Michelin Pilot Super Sport ZP Runflat tires or Michelin Pilot Sport Cup 2 ZP tires. These tires are ultra high performance, track capable summer tires.

This tire has reduced capability below 5°C (40°F) and it is recommended that suitable winter tires be fitted below this temperature.

Avoid driving, moving, or test-driving Corvettes equipped with Michelin Pilot Super Sport ZP tires below -7°C (20°F) as operating at these temperatures can cause damage to the tires.

Refer to the latest version of Corporate Bulletin Number 04-03-10-013: Driving Characteristics of Rear Wheel Drive Vehicles and Available Winter Tires for further information on available replacement winter tires for cold climate operation.

2014-2015 Chevrolet SS

The 2014 and 2015 SS is equipped with Bridgestone ultra-high performance summer tires.

This tire has reduced capability below 5°C (40°F) and it is recommended that suitable winter tires be fitted below this temperature.

Refer to the latest version of Corporate Bulletin Number 04-03-10-013: Driving Characteristics of Rear Wheel Drive Vehicles and Available Winter Tires for further information on available replacement winter tires for cold climate operation.

2012-2015 Buick Regal GS

The 2012-2015 Regal GS is equipped with ultra-high performance summer tires.

This tire has reduced capability below 5°C (40°F) and it is recommended that suitable winter tires be fitted below this temperature.

Refer to the latest version of Corporate Bulletin Number 04-03-10-013: Driving Characteristics of Rear Wheel Drive Vehicles and Available Winter Tires for further information on available replacement winter tires for cold climate operation.

Tire Storage

It is recommended that Summer tires are stored indoors at temperatures above -7°C (20°F) when not in use. If the tires have been subjected to -7°C (20°F) or less, let them warm up in a heated space to at least 5°C (40°F) for 24 hours or more before being installed or driving a vehicle on which they are installed. Inflate the tires only after they have been warmed above 5°C (40°F). Do not place tires near heaters or heating devices used to warm the room where the tires are stored. Do not apply heat or blow heated air directly on the tires. Always inspect tires before use after being stored.

Customer Information

Please share this information with the customer, including a copy of this message.

GM bulletins are intended for use by professional technicians, NOT a "do-it-yourselfer". They are written to inform these technicians of conditions that may occur on some vehicles, or to provide information that could assist in the proper service of a vehicle. Properly trained technicians have the equipment, tools, safety instructions, and know-how to do a job properly and safely. If a condition is described, DO NOT assume that the bulletin applies to your vehicle, or that your vehicle will have that condition. See your GM dealer for information on whether your vehicle may benefit from the information.



WE SUPPORT VOLUNTARY TECHNICIAN CERTIFICATION