



Service Bulletin

INFORMATION

Subject: Information on Refilling Coolant After Recent Repair

Attention: All involved vehicles are identified by Vehicle Identification Number on the Investigate Vehicle History screen in GM Global Warranty Management system with a reference to this bulletin. This Bulletin also applies to any of the models that may be Export vehicles.

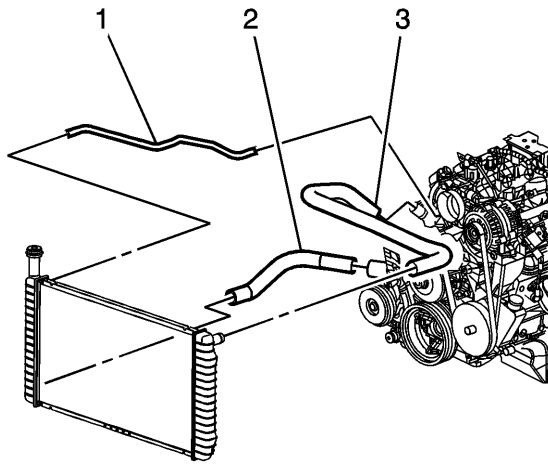
Brand:	Model:	Model Year:		VIN:		Engine:	Transmission:
		from	to	from	to		
Chevrolet	Express	2015	2016			Diesel Engine (RPO LGH)	All
GMC	Savana	2015	2016			Diesel Engine (RPO LGH)	All

Some radiator tank vent ports have flash covering the vent port hole causing the vent port to be sealed and not work as intended.

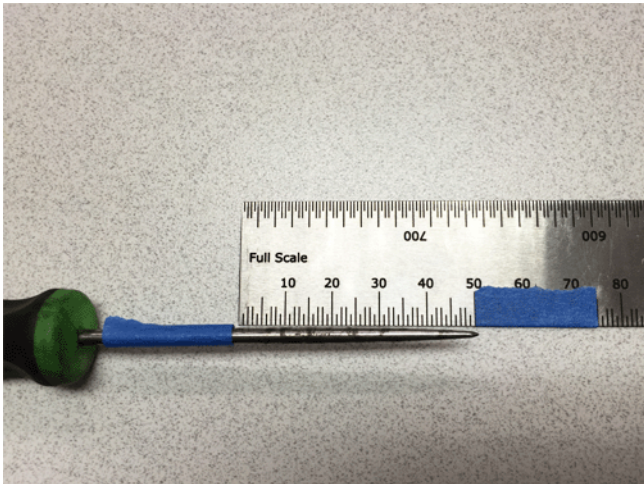
The cooling system's function is to maintain an efficient engine operating temperature during all engine speeds and operating conditions. The cooling system is designed to remove approximately one-third of the heat produced by the burning of the air-fuel mixture.

When Filling Coolant After Recent Repair

During any repair that involves the filling of the coolant, the following procedure should be completed to ensure that the coolant system is operating at its full potential.



1. Remove the radiator vent inlet hose (1) from the radiator.



2. Once the hose is removed, measure and mask off a pick or equivalent to 50 mm as illustrated above.
 3. Insert the pick or equivalent 50 mm into the vent tube of the radiator.
- Important:** The pick should not exceed 63.5 mm or damage to the oil cooler could occur.
4. Remove the pick or equivalent from the vent tube of the radiator.
 5. Reinstall the radiator vent inlet hose and continue to fill the cooling system by referring to the proper procedures in SI.

Version	1
Modified	

GM bulletins are intended for use by professional technicians, NOT a "do-it-yourselfer". They are written to inform these technicians of conditions that may occur on some vehicles, or to provide information that could assist in the proper service of a vehicle. Properly trained technicians have the equipment, tools, safety instructions, and know-how to do a job properly and safely. If a condition is described, DO NOT assume that the bulletin applies to your vehicle, or that your vehicle will have that condition. See your GM dealer for information on whether your vehicle may benefit from the information.



WE SUPPORT VOLUNTARY TECHNICIAN CERTIFICATION