



Service Bulletin

TECHNICAL

Subject: No Start/Stall - Seat Bottom Contacting Rear Electrical Center (REC)

Brand:	Model:	Model Year:		VIN:		Engine:	Transmission:
		from	to	from	to		
Buick	Lucerne	2008	2011			All	All
Cadillac	DTS	2008	2011				

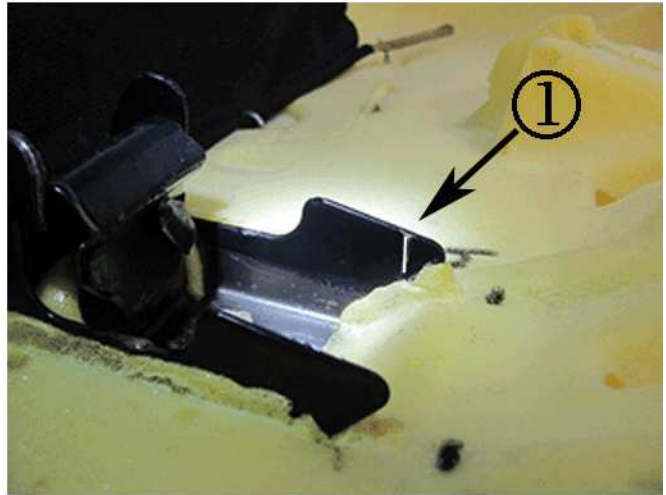
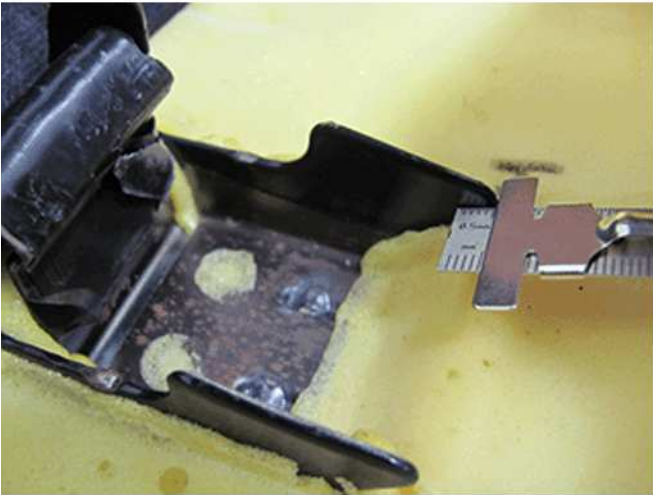
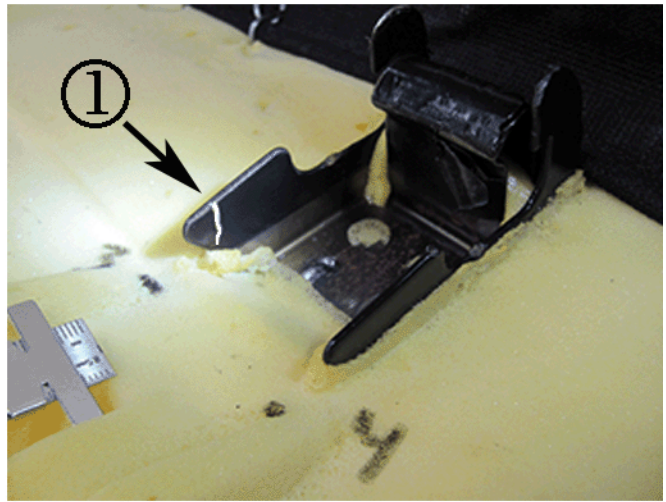
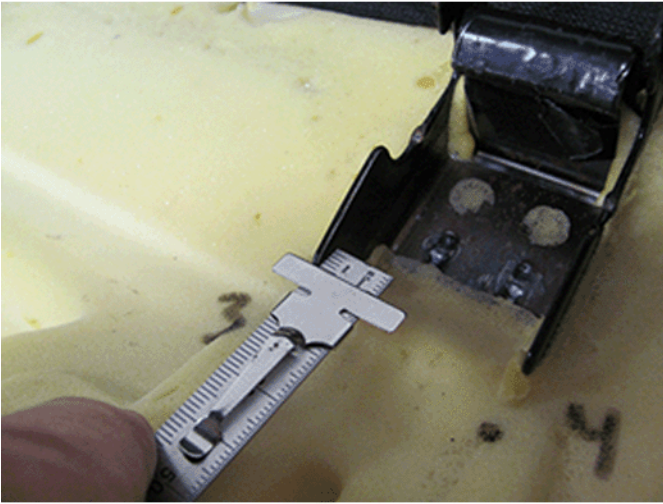
Involved Region or Country	North America and N.A. Export Regions
Condition	Some customers may comment on a no-start or stalling.
Cause	The rear seat bottom may come into contact with the rear electrical center (REC) cover. The contact/interface results in varying amounts of deflection of the fuel pump relay (FPR). The movement of the FPR causes potential wear of the male terminals on the FPR.

Correction

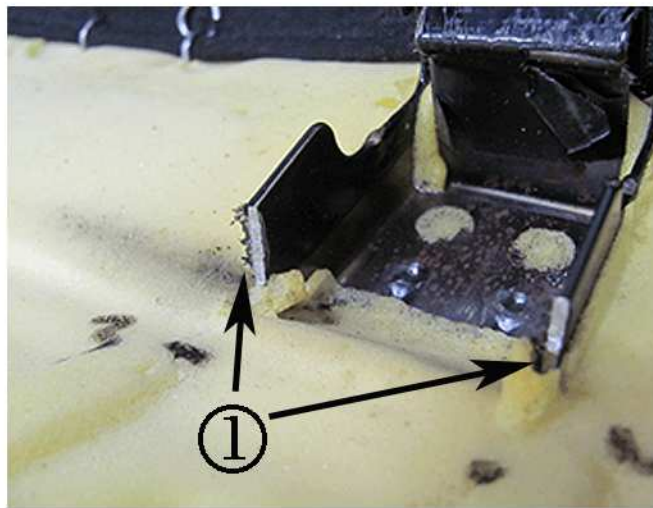
- Install a low profile fuel pump relay (DTS and Lucerne).
- Remove material from the rear seat bottom frame, driver side mounting brackets (Lucerne Only).

Service Procedure

1. Open the rear door and remove the rear seat bottom cushion.
2. Disconnect the battery.
3. Remove the fuel pump relay from the rear body fuse block and discard. Refer to Relay Replacement (within an Electrical Center).
4. Install the new low profile fuel pump relay to the rear body fuse block and install the cover.
5. Connect the battery.



6. For Lucerne only, with the rear seat cushion on a bench, measure 5 mm (0.197 in) from each edge of the right side seat mount bracket and mark with a paint marker as shown (1).



7. For Lucerne only, using a cut off wheel or equivalent, carefully cut each side of the bracket as shown (1). Check for any rough edges and file if necessary.
8. Install the rear seat cushion and close door.

Parts Information

Description	Part Number
Low Profile Fuel Pump Relay	88953222

Warranty Information

Labor Operation	Description	Labor Time
5480178* (Lucerne)	Replace Fuel Pump Relay, and Cut Rear Seat Bracket	0.4 hr
5430510 (DTS)	Relay Replacement	Use Published Labor Operation Time

*This is a unique Labor Operation for Bulletin use only.

Version	2
Modified	July 18, 2016 – Added Cadillac DTS.

GM bulletins are intended for use by professional technicians, NOT a "do-it-yourselfer". They are written to inform these technicians of conditions that may occur on some vehicles, or to provide information that could assist in the proper service of a vehicle. Properly trained technicians have the equipment, tools, safety instructions, and know-how to do a job properly and safely. If a condition is described, DO NOT assume that the bulletin applies to your vehicle, or that your vehicle will have that condition. See your GM dealer for information on whether your vehicle may benefit from the information.



WE SUPPORT VOLUNTARY TECHNICIAN CERTIFICATION