



Service Bulletin

PRELIMINARY INFORMATION

Subject: Pop or Click Noise When Front Seat is Moved Forward or Backward

Models: 2013-2015 Chevrolet Equinox
2013-2015 GMC Terrain
Equipped with RPOs AE8 or AH8

Attention: This PI also applies to any of the above models that may be Middle East Export vehicles.

Condition/Concern

Some customers may comment on a popping or clicking noise from the seat when the seat is travelled forward or backward.

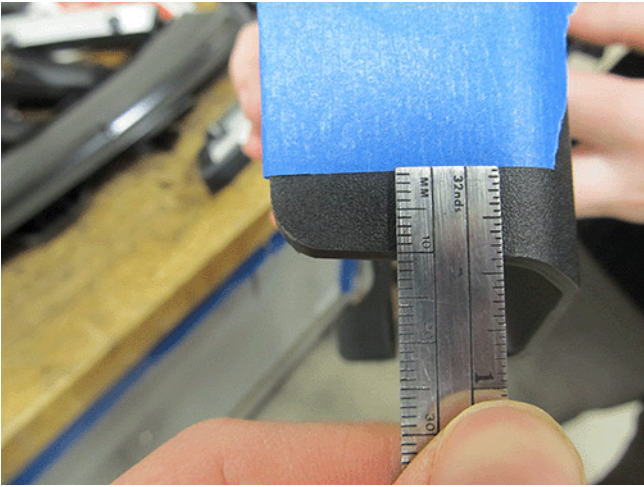


This may be caused by interference between the seat inner and/or outer finish cover and the end of the seat track when the seat is in the full down position or the seat is occupied.

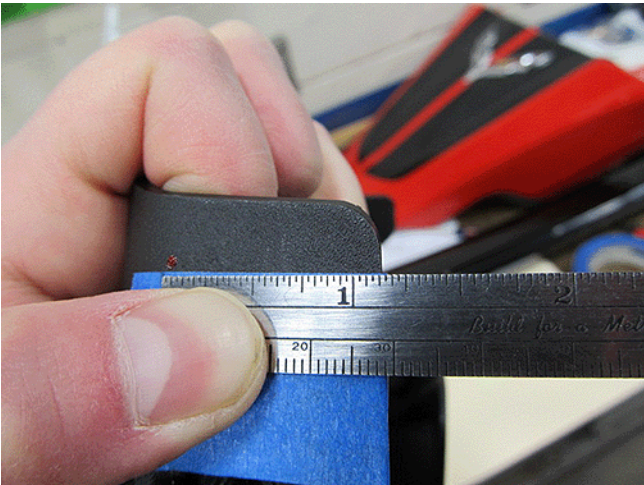
Recommendation/Instructions

If this condition exists, follow the procedure below.

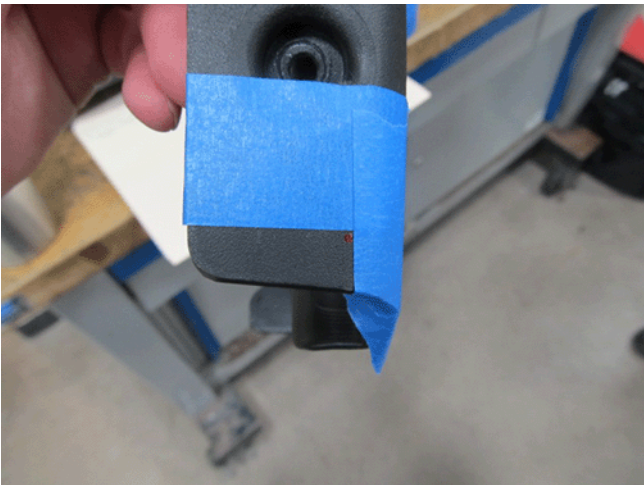
1. Remove the affected seats outer adjuster finish cover. Refer to Driver or Passenger Seat Outer Adjuster Finish Cover Replacement in SI.
2. Remove the affected seats inner adjuster finish cover. Refer to Driver or Passenger Seat Inner Recliner Finish Cover Replacement in SI.



3. With the covers removed, measure 10 mm (0.39 in) from the bottom of the back side of the cover and mark with masking tape or equivalent.

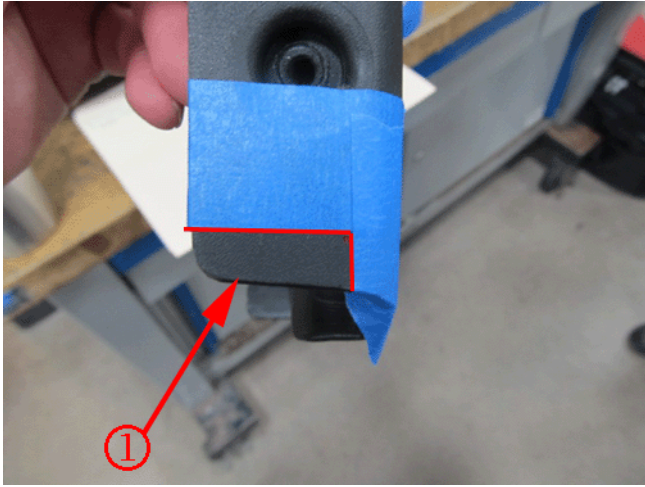


4. Measure 51 mm (2 in) on the outer finish panel and 26 mm (1 and 1/8 in) on the inner finish panel from the back edge of the finish cover following the masking tape and mark with a paint pen.



5. Apply a piece of masking tape from the marked point to the bottom of the finish panel as illustrated above.
6. Drill a hole on the mark using a 1/8 inch drill bit.
7. Using a cut off wheel or equivalent, cut the finish cover following the masking tape line all the way to the drilled hole.

Important: When cutting the cover, only cut the rear facing side of the cover panel and no farther than the hole that was drilled.



1. *Section to be Removed*
8. Finish removing the cut section by cutting from the bottom of the finish cover panel to the drilled hole following the masking tape.
9. After the cover has been cut, clean areas of debris and round off edges.
Important: Verify there are no sharp edges or corners.
10. Reinstall the covers.

Warranty Information

For vehicles repaired under the Bumper-to-Bumper coverage (Canada Base Warranty coverage), use the following labor operation. Reference the Applicable Warranties section of Investigate Vehicle History (IVH) for coverage information.

Labor Operation	Description	Labor Time
7080198*	Trimming of Inner and Outer Finish Covers	0.6 hr
*This is a unique Labor Operation for Bulletin use only. It will not be published in the Labor Time Guide.		

GM bulletins are intended for use by professional technicians, NOT a "do-it-yourselfer". They are written to inform these technicians of conditions that may occur on some vehicles, or to provide information that could assist in the proper service of a vehicle. Properly trained technicians have the equipment, tools, safety instructions, and know-how to do a job properly and safely. If a condition is described, DO NOT assume that the bulletin applies to your vehicle, or that your vehicle will have that condition. See your GM dealer for information on whether your vehicle may benefit from the information.



WE SUPPORT VOLUNTARY TECHNICIAN CERTIFICATION