

Driver Seat Leather Worn (1794 Western Package)

Service Category Vehicle Interior

Section Seat

Market USA

Toyota Supports ASE Certification

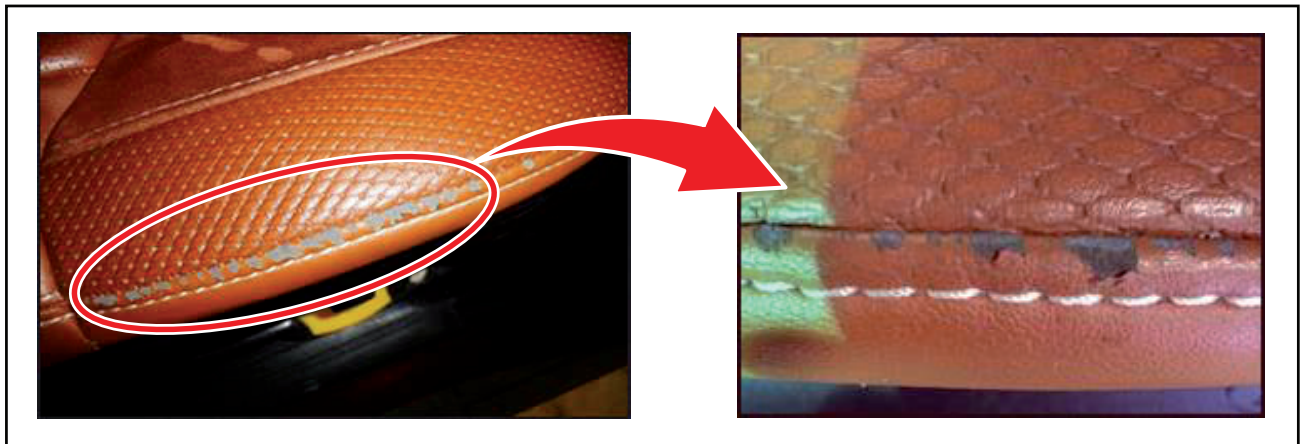
Applicability

YEAR(S)	MODEL(S)	ADDITIONAL INFORMATION
2014 – 2015	Tundra	Body Type(s): Crew Max VDS(s): AW5F1, AY5F1, BW5F1, BY5F1, CW5F1, CY5F1, DM5F1, DW5F1, DY5F1, EM5F1, EY5F1, FY5F1, GY5F1, HW5F1, HY5F1, NY5F1, PW5F1, PY5F1, RM5F1, RY5F1, SY5F1, TY5F1, UM5F1, UW5F1, UY5F1

Introduction

Some 2014 – 2015 model year Tundra CrewMax vehicles equipped with the 1794 Western Package may exhibit premature wear of the leather seat cushion due to entering or exiting the vehicle. Follow the Repair Procedure in this bulletin to address this condition.

Figure 1.



Parts Information

PART NUMBER		PART NAME	QTY
PREVIOUS	NEW		
71072-0C500-E0 71072-0C501-E0	71072-0C502-E1	Cover, Sub-assy, FR Seat Cushion LH	1
90468-18008 90468-16019		Hog Rings	12

Driver Seat Leather Worn (1794 Western Package)

Production Change Information

This bulletin applies to vehicles produced **BEFORE** the Production Change Effective VINs shown below.

MODEL	PLANT	DRIVETRAIN	PRODUCTION CHANGE EFFECTIVE VIN
Tundra CrewMax (1794 Western Package)	TMMTX	2WD	5TFRM5F1#FX083105
			5TFNY5F1#FX174479
			5TFEM5F1#FX083104
			5TFSY5F1#FX174275
			5TFRY5F1#FX174250
			5TFFY5F1#FX174253
			5TFEY5F1#FX174247
			5TFGY5F1#FX174249
			5TFTY5F1#FX008716
		4WD	5TFAW5F1#FX419659
			5TFAY5F1#FX419625
			5TFBW5F1#FX419735
			5TFBY5F1#FX419656
			5TFUW5F1#FX419658
			5TFUY5F1#FX419663
			5TFHW5F1#FX419640
			5TFHY5F1#FX419649
			5TFPW5F1#FX420806
			5TFPY5F1#FX420003
			5TFDW5F1#FX419647
			5TFDY5F1#FX419657
			5TFCW5F1#FX017909
			5TFCY5F1#FX017910
5TFUM5F1#FX059440			
5TFDM5F1#FX059467			

Driver Seat Leather Worn (1794 Western Package)

Warranty Information

OP CODE	DESCRIPTION	TIME	OFF	T1	T2
BD1510	R & R Cover, Sub-assy, FR Seat Cushion, LH	0.8	71072-0C500-E0 71072-0C501-E0	67	19

APPLICABLE WARRANTY

- This repair is covered under the Toyota Basic Warranty. This warranty is in effect for 36 months or 36,000 miles, whichever occurs first, from the vehicle's in-service date.
- Warranty application is limited to occurrence of the specified condition described in this bulletin.

Required Tools & Equipment

SPECIAL SERVICE TOOLS (SST)	PART NUMBER	QTY
Plastic Pry Tool Kit*	00002-06020-01	1
Seat Heater Attachment Kit*	00002-01775	1

* Essential SST.

NOTE

Additional SSTs may be ordered by calling 1-800-933-8335.

REQUIRED TOOLS	QUANTITY
Hog Ring Pliers	1

Driver Seat Leather Worn (1794 Western Package)

Repair Procedure

1. Remove the seat cushion cover.

Refer to the Technical Information System (TIS), applicable model and model year Repair Manual:

- [2014](#) / [2015](#) Tundra:
Vehicle Interior – Seat – “Seat: Front Seat Cushion Heater (for Power Seat): Removal”

NOTICE

While disassembling the seat assembly, do NOT damage and/or soil the seat.

CAUTION

To prevent seat damage and potential injury, ensure all the clipped Hog Rings are removed.

Figure 2.



1 Remove Clipped Hog Rings

2. Install a NEW front seat cushion cover.

Refer to TIS, applicable model and model year Repair Manual:

- [2014](#) / [2015](#) Tundra:
Vehicle Interior – Seat – “Seat: Front Seat Cushion Heater (for Power Seat): Installation”

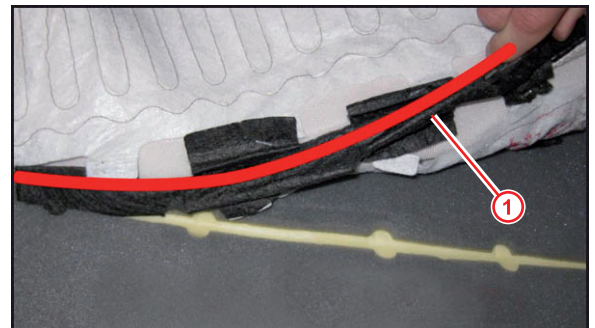
NOTICE

Do NOT bend the hog ring anchor rods while installing the seat cover.

NOTE

Ensure all 10 tabs of the seat heater element are attached to the seat cover.

Figure 3.



1 Do NOT Bend Hog Ring Anchor Rod

Driver Seat Leather Worn (1794 Western Package)

Repair Procedure (Continued)

CAUTION

Use caution when using the tag pin gun. The needle is very sharp.

NOTICE

- When using the tag pin gun, be careful to **NOT** damage the seat cover with the needle.
- Confirm all tag pins are securely installed to ensure the seat heater stays in the correct position.

Figure 4.

**NOTE**

- Always install the seat heater with the copper wires facing the seat cover.
- Never install the seat heater with the copper wires facing the cushion.

3. Confirm that the seat cover is installed correctly (NOT bundled or crooked).
4. Confirm operation of all seat functions.