

No.: 15 TL-4

March 4, 2015

TO: Service Locations

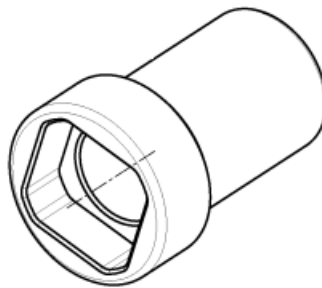
FROM: Service Systems Development

SUBJECT: **W470589050900 – 3/8” Drive GEN2 Two-Stage Valve Socket**

ISSUE

The KM63 GEN2 High Pressure Fuel Pump is designed with a square head style Two-Stage Valve. Access to the valve without a special tool requires removal of the high pressure flange from the fuel pump. This method takes longer, requires additional parts (seal rings) and increases risk of damage or dirt intrusion to the Fuel Injection System FIS.

The DetroitTM special tool group has developed a 3/8” drive socket to remove the Two-Stage valve on the KM63 GEN2 High Pressure Fuel Pump without removing the High Pressure Flange.



REQUIRED ACTION

Ordering Information - Tools will be automatically shipped and invoiced to your facility during the month of March. Locations that are **NOT** EPA07, EPA10 or GHG14 DD-certified in SSI will need to order the tools through the Paragon system. Tools can be ordered through Paragon using a DDE supplier prefix.

- W470589050900 – 3/8” Drive GEN2 Two Stage Valve Socket

CONTACT INFORMATION

Please e-mail detroittoolwarranty@daimler.com if you have any questions.