

1 3 05-15



Service Information Bulletin

SUBJECT	DATE
EPA10 Diesel Oxidation Catalyst Inlet Pressure Sensor	March 2015

Additions, Revisions, or Updates

Publication Number / Title	Platform	Section Title	Change
DDC-SVC-MAN-0083	DD Platform	Removal and Installation of the EPA10 Diesel Oxidation Catalyst Inlet Pressure Sensor	These are new sections.



13400 Outer Drive, West, Detroit, Michigan 48239-4001
 Telephone: 313-592-5000
www.demanddetroit.com

2 Removal of the EPA10 Diesel Oxidation Catalyst Inlet Pressure Sensor

Removal as follows:

1. Shut off engine and apply the parking brake, chock the wheels, and perform any other applicable safety steps.
2. Disconnect the batteries.



CAUTION: ELECTRICAL SHOCK

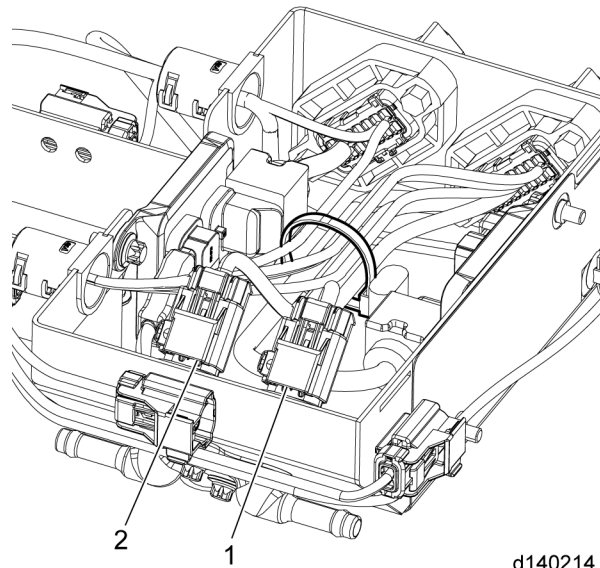
To avoid injury from electrical shock, use care when connecting battery cables. The magnetic switch studs are at battery voltage.



WARNING: PERSONAL INJURY

To avoid injury from hot surfaces, wear protective gloves, or allow engine to cool before removing any component.

3. Remove the sensor box cover by removing the bolt and disengaging the latches.
4. Disconnect the Diesel Oxidation Catalyst (DOC) inlet pressure sensor electrical harness connector (1) from the DOC inlet pressure sensor.

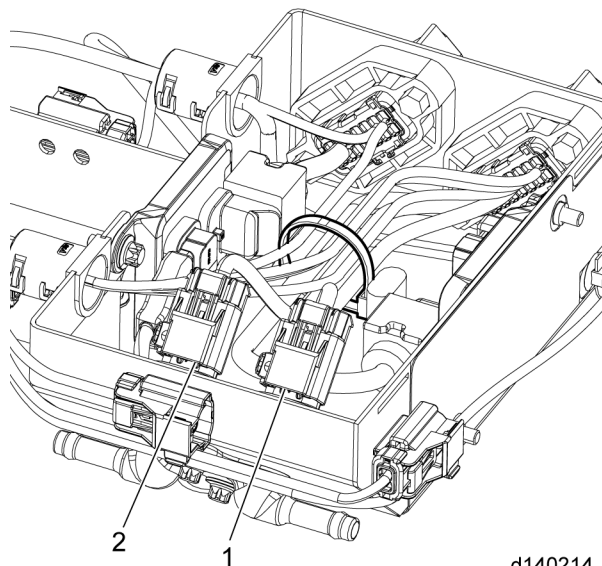


5. Unscrew the DOC inlet pressure sensor from the sensor box manifold and remove from sensor box.

3 Installation of the EPA10 Diesel Oxidation Catalyst Inlet Pressure Sensor

Install as follows:

1. Screw the Diesel Oxidation Catalyst (DOC) Inlet pressure sensor into the sensor box manifold.
 - Torque pressure sensor M12 to 14-16 N·m (10-12 lb·ft).
 - Torque pressure sensor M14 to 15-18 N·m (11-13 lb·ft).
2. Connect the DOC inlet pressure sensor electrical harness connector (1) to the DOC inlet pressure sensor inside the sensor box.



3. Install the sensor box cover.