

Technical Service Bulletin



30 Clutch plate diagnosis guidelines

30 15 19 2019850/5 July 1, 2015. Supersedes Technical Service Bulletin Group 30 number 11-10 dated December 2, 2011 for reasons listed below.

Model(s)	Year	VIN Range	Vehicle-Specific Equipment
All	2009 - 2016	All	Manual transmission

Condition

REVISION HISTORY		
Revision	Date	Purpose
5	-	Revised header data (Added model years 2015 and 2016)
4	12/2/2011	Revised header data (Added model years 2012, 2013, and 2014)
3	7/22/2011	Revised header data (Added model year 2011)

- Clutch is not operating properly.
- Clutch has a burnt smell.
- Clutch pedal does not fully return to starting position.

Technical Background

The following conditions can lead to clutch damage, such as overheating of the clutch plate and removal of the lining:

- Incorrect shifting.
- At a high vehicle speed, the clutch is pressed and an incorrect lower gear is selected. The gearbox drives the clutch plate past its designed RPM range (overspeed condition) and centrifugal force damages the clutch. If the clutch was engaged during this incorrect gear engagement, damage would also occur to the engine.
- The revolutions of clutch plate and engine input shaft differ too much.
- Excessive slipping of the clutch.

Production Solution

Not applicable.

Service

If any of the damage described below is present, it is due to outside influence and is not covered under warranty.

- Lining partly removed due to overheating (Figure 1).



Figure 1. Lining partly removed due to overheating.

- The lining burst off because of an overspeed condition (Figure 2).



Figure 2. Burst lining from an overspeed condition.

- The lining is ground to the rivets, which causes a broken clutch lining (Figure 3).

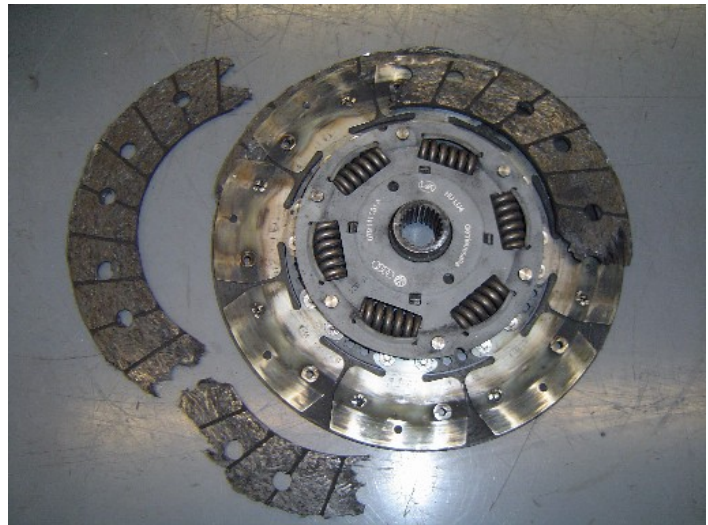


Figure 3. Broken clutch lining.

Warranty

All clutch damage shown in this TSB is due to outside influence and is not covered by any Audi warranty.

Additional Information

All parts and service references provided in this TSB (2019850) are subject to change and/or removal. Always check with your Parts Department and service manuals for the latest information.