

Technical Service Bulletin



72 Front center armrest will not sit flat

72 15 15 2041579/1 August 5, 2015.

Model(s)	Year	VIN Range	Vehicle-Specific Equipment
A8	2010 - 2017	All	Not Applicable

Condition

One side of the front center armrest will not lay flat or even with the other side.

Technical Background

The pin from the locking pawl is out of place.

Production Solution

Not applicable.

Service

1. Use a trim tool to carefully separate the top of the armrest from the lower portion so that the mechanical components are visible (Figure 1).



Figure 1. Use a trim tool to separate the top of the armrest from the lower portion.

2. With the mechanical components visible, inspect the locking pawl. If the pin is too far out of place, push the pin back into the locking pawl as shown (Figure 2 and Figure 3).

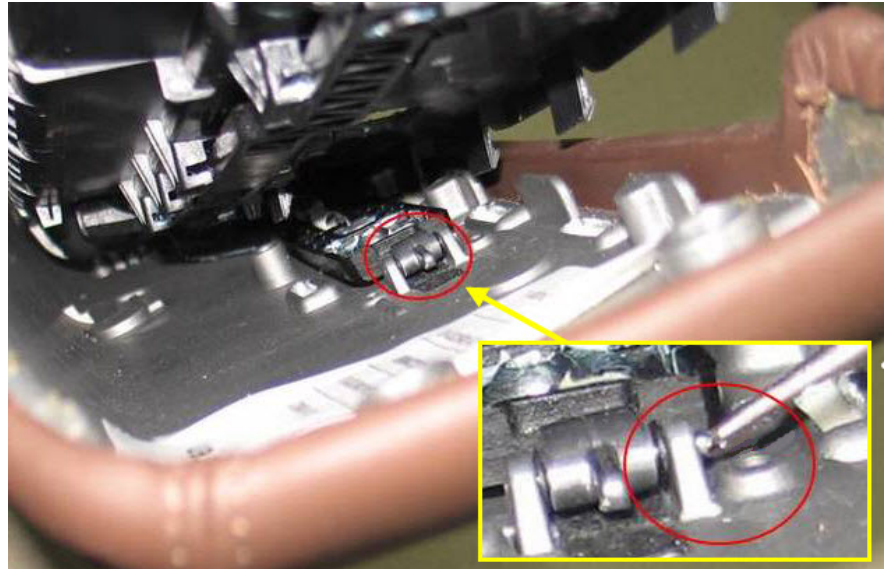


Figure 2. Pushing the pin back into the locking pawl.

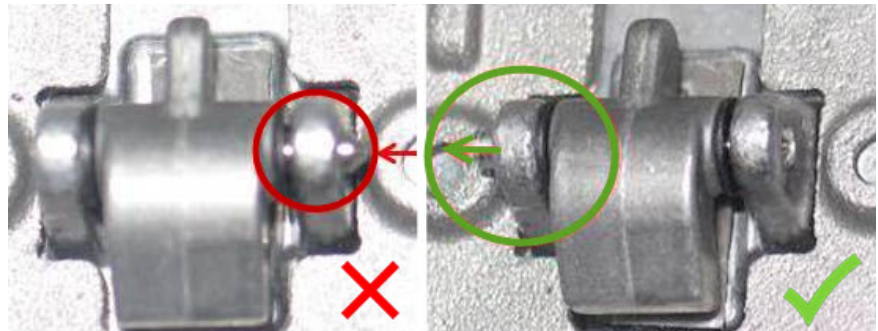


Figure 3. Incorrectly-positioned pin (left) and correctly-positioned pin (right).

3. Operate the center console to ensure that the locking pawl moves correctly, then reassemble the armrest.

Technical Service Bulletin



Warranty

Claim Type:	Use applicable claim type. If vehicle is outside any warranty, this Technical Service Bulletin is informational only.		
Service Number:	7220		
Damage Code:	0017		
Labor Operations:	Separate armrest lid and adjust locking pawl pin	7220 5099	50 TU
Diagnostic Time:	GFF	No allowance	0 TU
	Road test prior to service procedure	No allowance	0 TU
	Road test after service procedure	No allowance	0 TU
	Technical diagnosis at dealer's discretion (Refer to Section 2.2.1.2 and Audi Warranty Online for DADP allowance details)		
Claim Comment:	As per TSB #2041579/1		

All warranty claims submitted for payment must be in accordance with the *Audi Warranty Policies and Procedures Manual*. Claims are subject to review or audit by Audi Warranty.

Additional Information

All parts and service references provided in this TSB (2041579) are subject to change and/or removal. Always check with your Parts Department and service manuals for the latest information.