



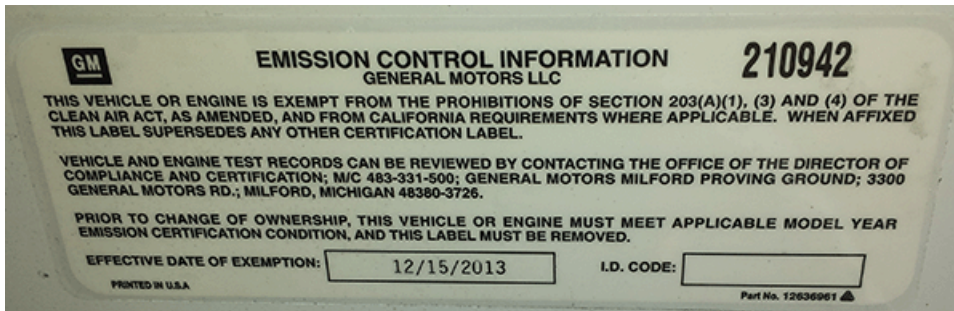
# Service Bulletin

## PRELIMINARY INFORMATION

**Subject:** How to Identify Factory or Aftermarket CNG, LPG, Bi-Fuel Systems

**Models:** 2016 Prior Passenger Cars And Light Duty Trucks

Prior to working on Alternative Gaseous Fuel Systems



The Vehicle Emission Control Information Label (VECI) is located under the hood or in the engine compartment

### Recommendation/Instructions

Each alternative fuel vehicle will have 2 VECI labels. (both factory and aftermarket fuel systems)

- 1-VECI label from General Motors.
- 1-VECI label from the gaseous fuel system supplier.

By using the engine RPO code as well as the VECI labels, you can confirm the vehicle has a factory installed alternative fuel system or who the manufacturer is of the aftermarket fuel system.

STEP 1: Verify vehicle's RPO code states that it is a Gaseous Fuels Engine or uses a specific Gaseous Fuel System RPO code, in Global Warranty Management.

IF YES: Continue with normal GM diagnostics in SI.

IF NO: Vehicle has been modified with an aftermarket gaseous fuel system. Proceed to step 2.

STEP 2: Locate VECI label of aftermarket fuel system in the engine compartment.

A: Contact the manufacturer per the VECI label for all service center locations and possible warranty repairs.

B: Some VECI labels may have a contact number listed. If a number was not provided, you may have to use the internet to locate Service Centers that are approved to Perform Warranty Repairs.

Examples Of VECI Labels

**GM** GENERAL MOTORS LLC

**VEHICLE EMISSION CONTROL INFORMATION**

FF181389

Conforms to regulations: 2015 FFV Fuel: Gasoline/Ethanol  
 U.S. EPA class / stds: LDV / TIER2  
 California class / stds: PC / ULEV qualified  
 Group: FGMXJ03.6166 3.6L  
 Evap: FGMXR0133810  
 DGI/HO2S/TWC, OBD: II

**IMPCO**

**VEHICLE EMISSION CONTROL INFORMATION**

THIS VEHICLE OR ENGINE IS EXEMPT FROM THE PROHIBITIONS OF SECTIONS 203(a)(1), (3) and (4) OF THE CLEAN AIR ACT, AS AMENDED

IMPCO Technologies Inc.  
 3030 S. Susan St.  
 Santa Ana, CA 92704

For further information about this vehicle or engine, contact IMPCO's certification manager at (714) 656-1200.

This label must be affixed in a readily-visible portion of the engine compartment. Do not remove the OEM emission control information label. L3-5399-4-00

**QUANTUM TECHNOLOGIES**

**VEHICLE EMISSION CONTROL INFORMATION**

FF114310

Conforms to regulations: 2015 DFV Fuel: Gasoline/CNG  
 U.S. EPA class / stds: LDV / TIER2  
 California class / stds: N/A  
 Group: FQTMV03.6166 3.6L  
 Evap: FQTMR0133810  
 SFI/HO2S/TWC, OBD: II

**VEHICLE EMISSIONS CONTROL INFORMATION**

ENGINE FAMILY: FCLFE06.0LC8  
 EVAPORATIVE FAMILY: FCLFF0300LPG  
 EMISSION CONTROL SYSTEM: ECM, 2TWC, SFI, 2HO2S(2)  
 ENGINE DISPLACEMENT: 6.0 L  
 MAXIMUM RATED POWER: 346 HP  
 OPERATION FUEL: LIQUID PETROLEUM GAS (LPG)

**CLEANFUEL USA**

THIS VEHICLE CONFORMS TO 2015 MODEL YEAR EXHAUST AND EVAPORATIVE EMISSIONS REGULATIONS FOR HEAVY DUTY VEHICLES AND IS CERTIFIED UNDER HEAVY DUTY OTTO-CYCLE ENGINE TEST PROCEDURES. THIS VEHICLE UNCONDITIONALLY COMPLIES WITH US EPA REGULATIONS AND CALIFORNIA STANDARDS FOR HEAVY DUTY VEHICLES INCLUDING HEAVY DUTY ON HIGHWAY EVAPORATIVE SYSTEMS.

CleanFuel USA Inc. LAX-0036-X-01

Please follow this diagnostic or repair process thoroughly and complete each step. If the condition exhibited is resolved without completing every step, the remaining steps do not need to be performed.

GM bulletins are intended for use by professional technicians, NOT a "do-it-yourselfer". They are written to inform these technicians of conditions that may occur on some vehicles, or to provide information that could assist in the proper service of a vehicle. Properly trained technicians have the equipment, tools, safety instructions, and know-how to do a job properly and safely. If a condition is described, DO NOT assume that the bulletin applies to your vehicle, or that your vehicle will have that condition. See your GM dealer for information on whether your vehicle may benefit from the information.



WE SUPPORT VOLUNTARY TECHNICIAN CERTIFICATION