

FLA COE
FLB COE
FLD Conventional
Business Class
FLC 112 Conventional

Century Class Conventional
Argosy COE
Cargo
Columbia

122SD and Coronado
Business Class M2
> Cascadia
108SD/114SD

**Freightliner
Service Bulletin**

General Information

Cascadia vehicles equipped with a Bendix TPMS and built from January 12, 2015 to September 14, 2015 may have a backlight issue with the TPMS display gauge. Use the instructions below to update the TPMS display firmware.

Inspection

1. Park the vehicle on a level surface, shut down the engine, and set the parking brake. Chock the tires.
2. Turn the ignition to the ON position.
3. When the TPMS display activates, check which version is being used.
 - 3.1 If the display shows version 1.1, no further work is needed; turn the ignition OFF.
 - 3.2 If the display does not show version 1.1, turn the ignition OFF and follow the procedure below.

Procedure

1. Connect the laptop being used to a vehicle adaptor, then connect the laptop connector to the diagnostic connector.
2. Turn the ignition to the ON position.
3. Go to www.smartire.com/support/manuals. In the "Downloads" section under "Cascadia TPMS Display Updater", download the "Update for Cascadia TPMS Display".
4. Once the application is downloaded, save the zip files in a temporary directory.
5. Open the directory and run the SmartWave_Updater.exe program.
6. Select the "Update" button. See [Fig. 1](#).
7. Select the interface being used from the drop down list. See [Fig. 2](#).
8. Select the device you are using from the "Select Device" drop down list. See [Fig. 3](#).
9. Make certain J1939 is selected in the "Select Protocol" drop down list. See [Fig. 4](#). If the J1939 option is not available, try selecting a different device.
10. The "Select Channel" drop down menu may allow more than one channel to be selected. If this is the case, select channel 1 first. If the update fails, you will have to close and open the program again in order to try another channel. See [Fig. 5](#).
11. Choose the "Select" button. The program will update the display firmware. A window will appear with a progress bar as shown in [Fig. 6](#).
12. When the update is complete, the TPMS display will reboot and the version number on the display will read as 1.1.

If you continue to have problems, call Bendix at 1-800-247-2725.

Warranty

This is an informational bulletin only; warranty does not apply.

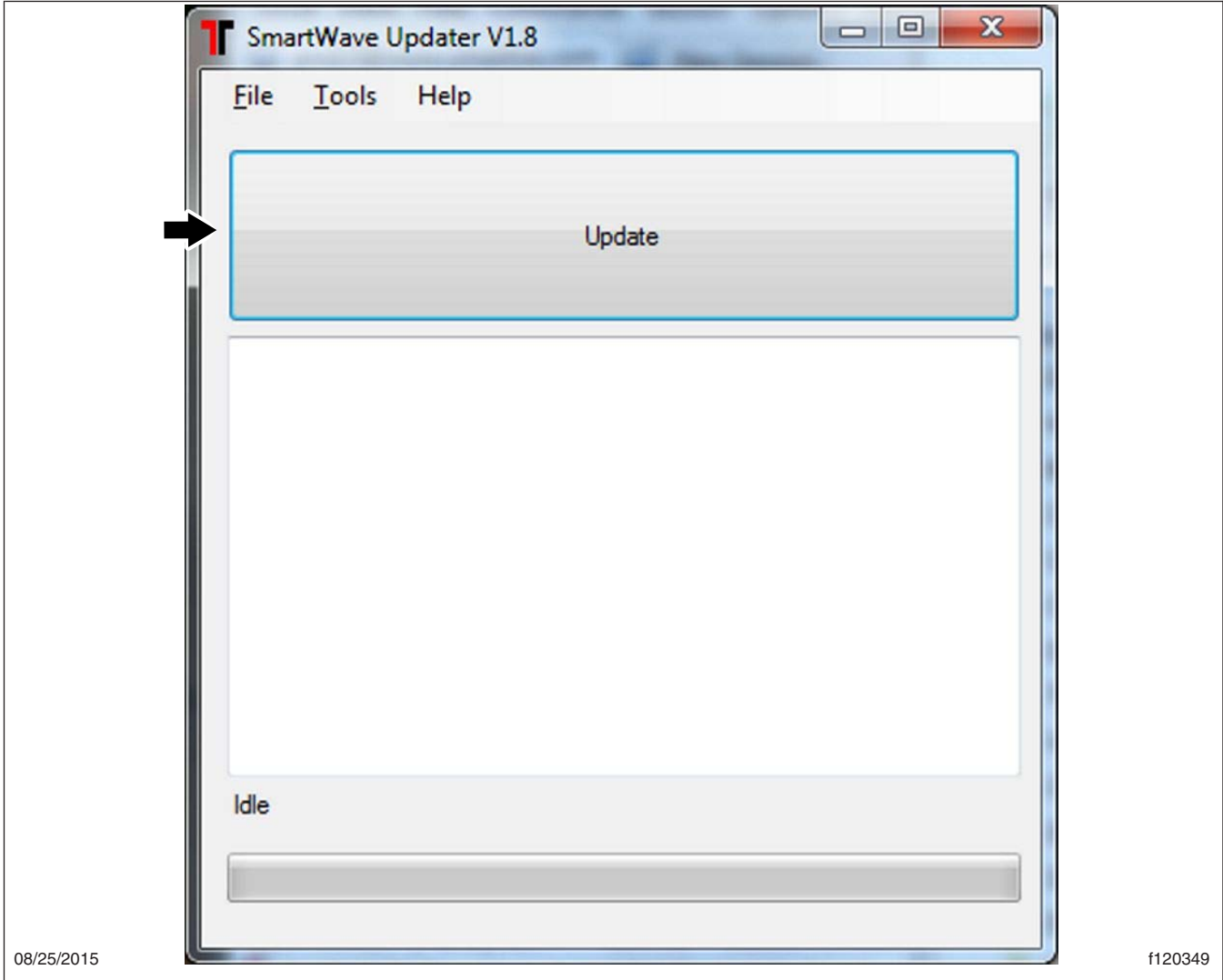


Fig. 1, SmartWave Updater Main Window

FLA COE
FLB COE
FLD Conventional
Business Class
FLC 112 Conventional

Century Class Conventional
Argosy COE
Cargo
Columbia

122SD and Coronado
Business Class M2
> Cascadia
108SD/114SD

**Freightliner
Service Bulletin**

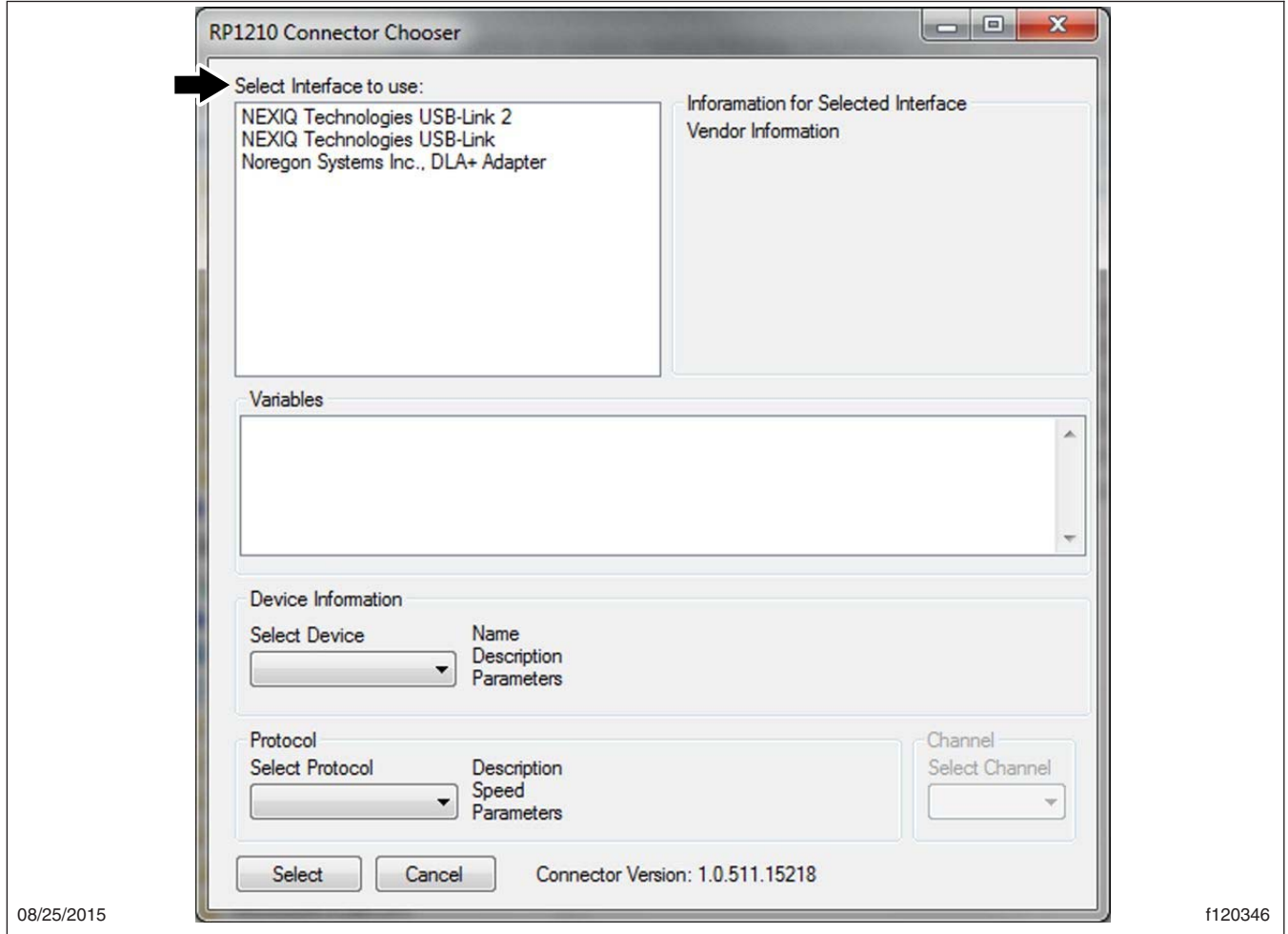


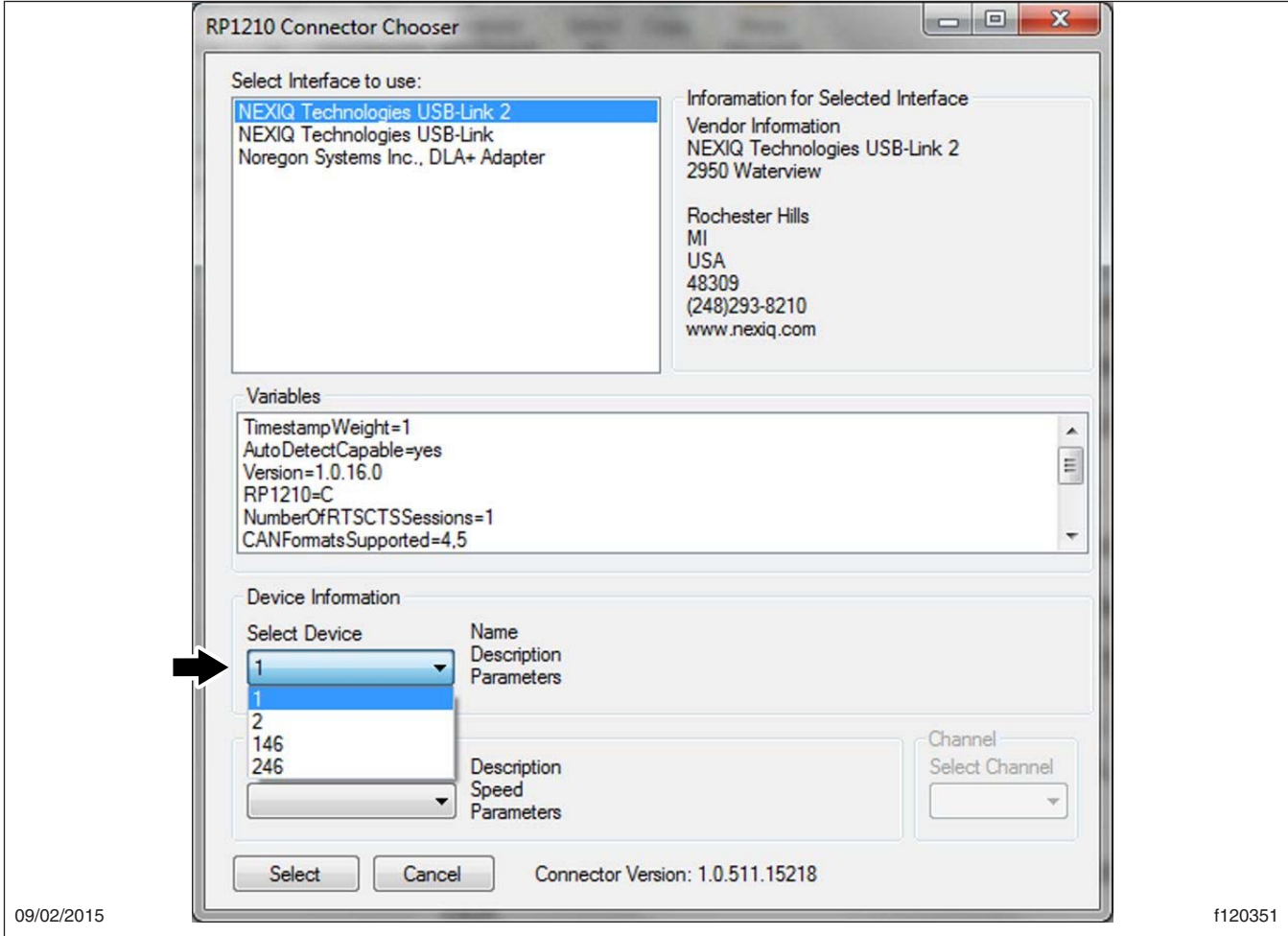
Fig. 2, Selecting the Interface

Freightliner Service Bulletin

FLA COE
FLB COE
FLD Conventional
Business Class
FLC 112 Conventional

Century Class Conventional
Argosy COE
Cargo
Columbia

122SD and Coronado
Business Class M2
> Cascadia
108SD/114SD



09/02/2015

f120351

Fig. 3, Selecting the Device

FLA COE
FLB COE
FLD Conventional
Business Class
FLC 112 Conventional

Century Class Conventional
Argosy COE
Cargo
Columbia

122SD and Coronado
Business Class M2
> Cascadia
108SD/114SD

**Freightliner
Service Bulletin**

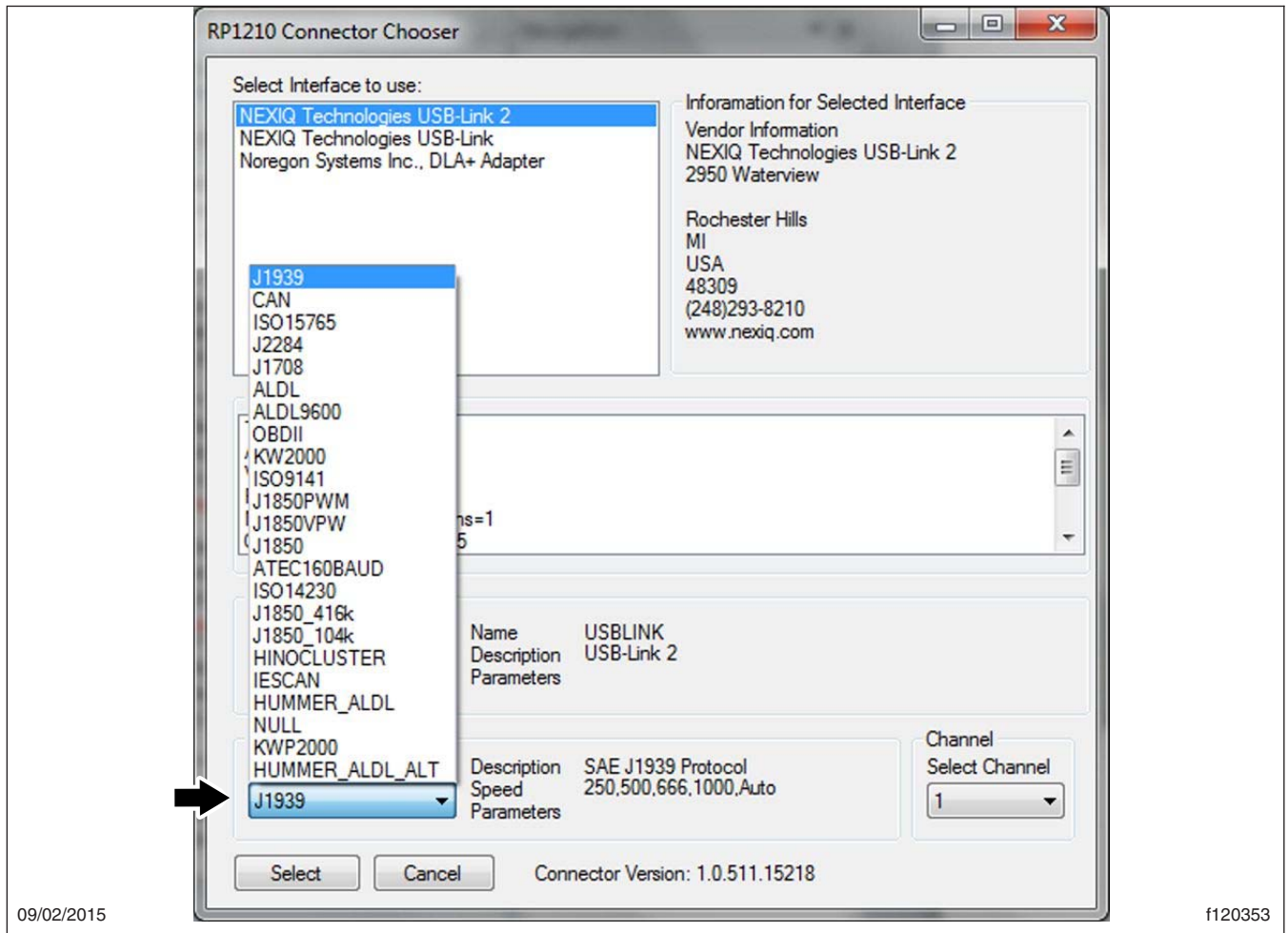


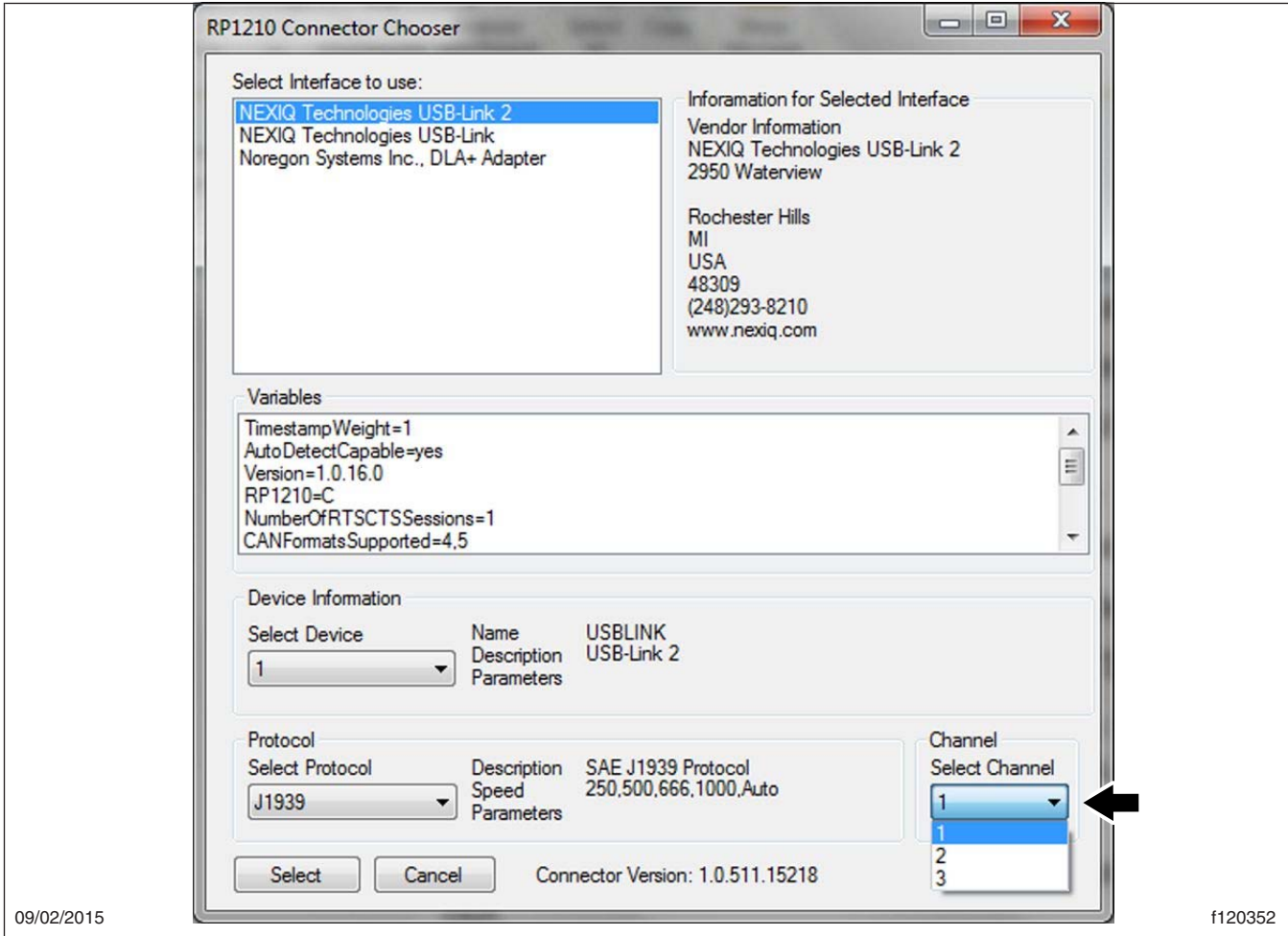
Fig. 4, Selecting the Protocol

Freightliner Service Bulletin

FLA COE
FLB COE
FLD Conventional
Business Class
FLC 112 Conventional

Century Class Conventional
Argosy COE
Cargo
Columbia

122SD and Coronado
Business Class M2
> Cascadia
108SD/114SD



09/02/2015

f120352

Fig. 5, Selecting the Channel

Tire Pressure Monitoring System (TPMS) Display Firmware Update

40-12

FLA COE
FLB COE
FLD Conventional
Business Class
FLC 112 Conventional

Century Class Conventional
Argosy COE
Cargo
Columbia

122SD and Coronado
Business Class M2
> Cascadia
108SD/114SD

**Freightliner
Service Bulletin**

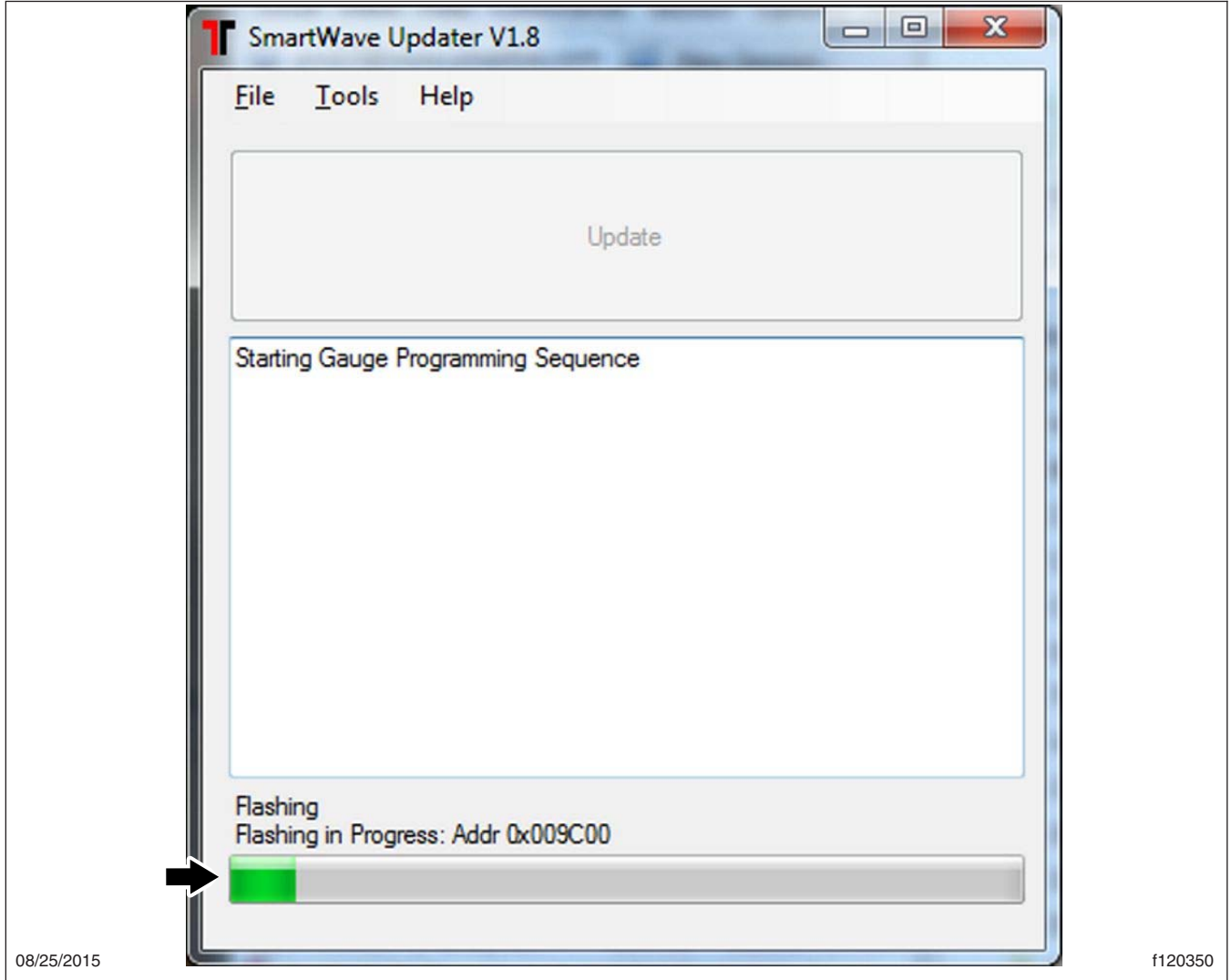


Fig. 6, SmartWave Updater Progress Window