



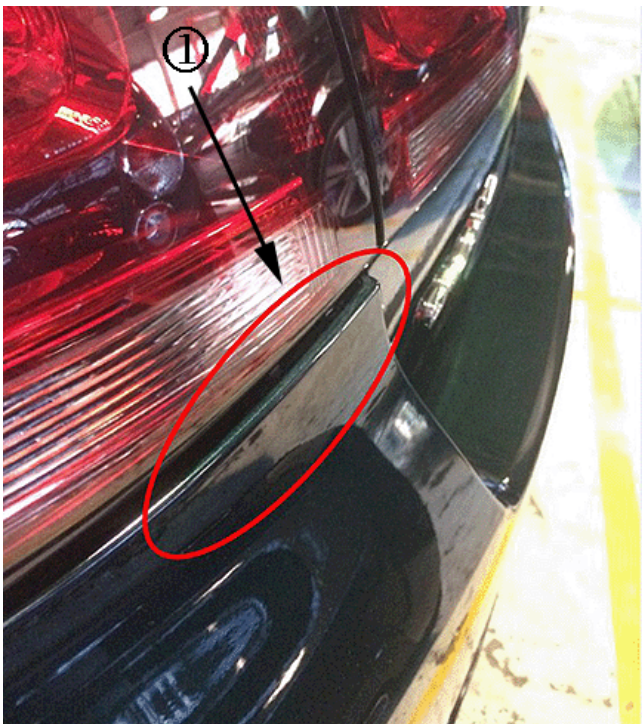
Service Bulletin

TECHNICAL

Subject: Rear Fascia Retainment Concern Below Tail Lamp

Brand:	Model:	Model Year:		VIN:		Engine:	Transmission:
		from	to	from	to		
Chevrolet	SS	2015	2015			All	All

Condition	Some customers may comment that the fascia sticks out below the tail lamp.
Cause	This may be caused by poor retention of the fascia in the tail lamp bracket.
Production Solution (Optional and additional information)	The bracket is being tuned to improve retention.



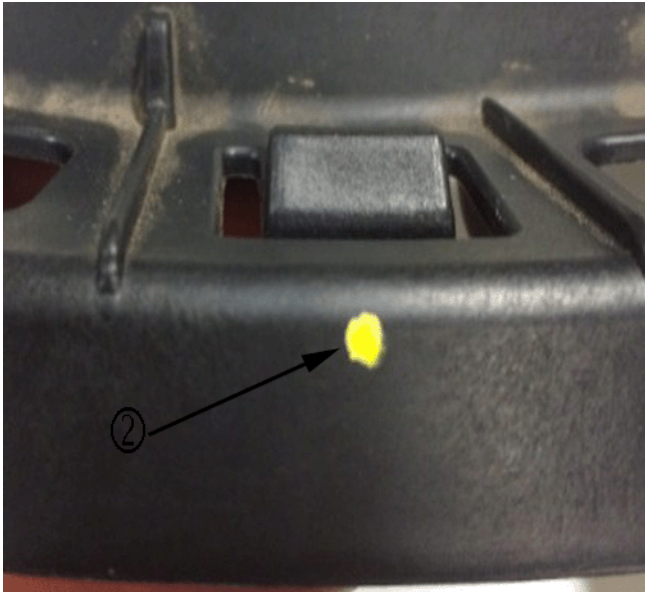
Correction

Use the following service procedure to improve the retention of the rear fascia to the tail lamp bracket:

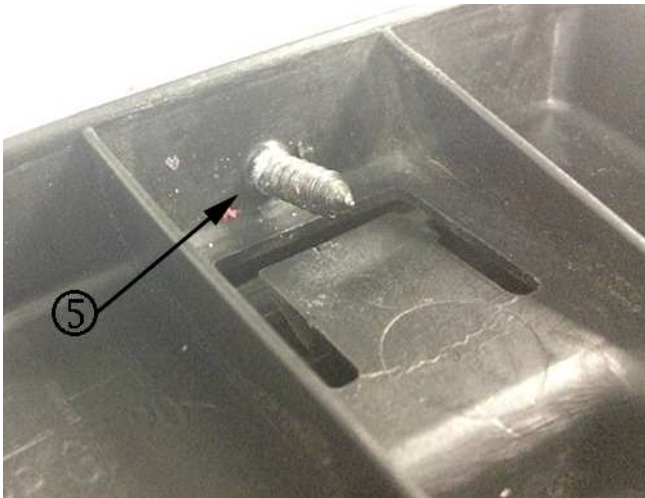
Step 1 — Remove the rear fascia assembly from the vehicle.

Step 2 — Remove the rear fascia guide bracket from the tail lamp assembly.

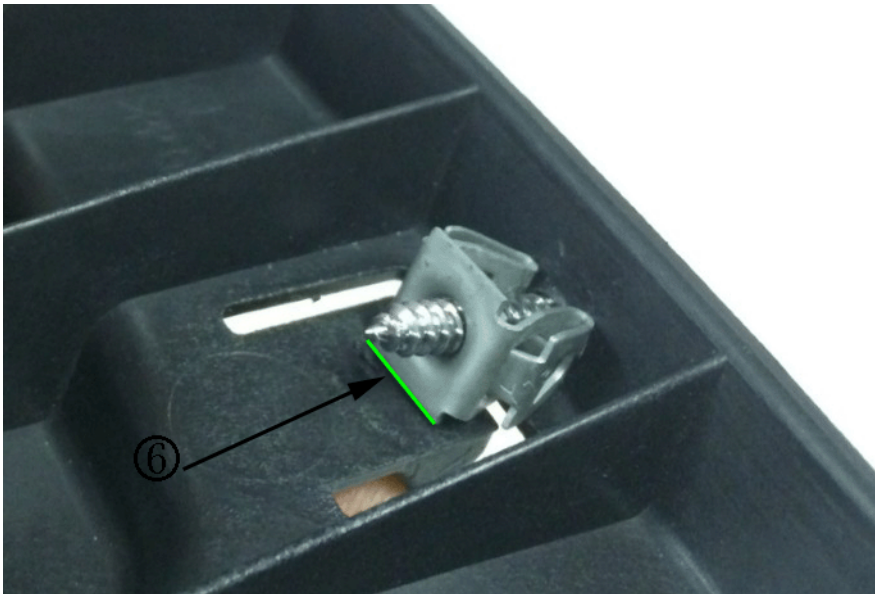
Step 3 — Drill a 2.5 mm hole in the fascia bracket below the tail lamp as high as possible in the rear surface (2) underneath the furthest inboard tang of the fascia bracket. Ensure the pilot hole is drilled with a slight upward angle (3) to improve the support below the tang.



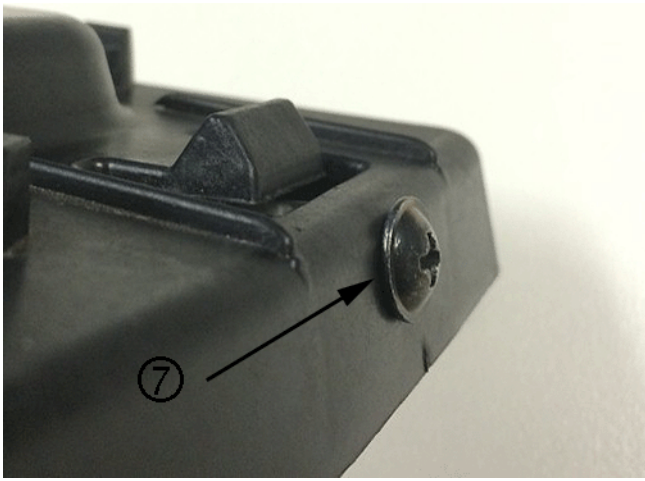
Step 4 — Thread the screw (4) into the bracket (5).



Step 5 — Align the push nut with the screw such that the flat edge of the push nut (6) is applying preload to the lower surface of the fascia bracket tang.

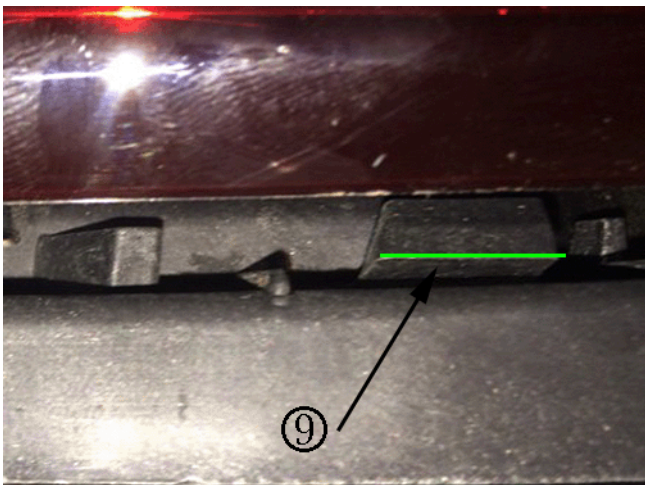
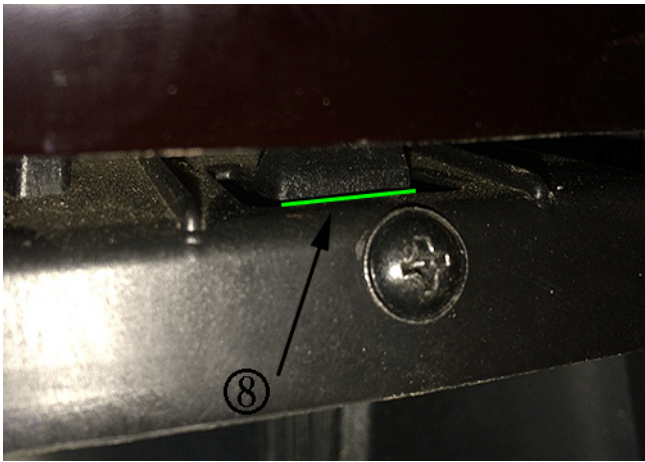


Step 6 — Torque the screw up to the point that it is sitting flush on the rear face of the bracket (7).



Step 7 — Refit the rear fascia guide bracket to the tail lamp.

Step 8 — With the push nut supporting the fascia bracket tang, check that the lower edge of the tang sits flush (8) with the upper surface of the fascia bracket. If the tang sits too high (9), the fascia will be difficult to remove during service.



Step 9 — Repeat steps 4–9 for the opposite side of the vehicle.

Step 10 — Refit the rear fascia bracket to the tail lamp.

Step 11 — Refit the tail lamp to the vehicle.

Step 12 — Before fitting all fasteners, confirm that fascia retention has been improved. The fascia should not pop out below tail lamps when pressure is applied to the horizontal surface of the fascia below the deck-lid (10). If the fascia is still not sufficiently retained, it may be necessary to tune the tangs slightly further up



Step 13 — Once fascia retention is confirmed to be acceptable, refit all fascia fasteners as per SI.

Service Part Name:	Service Part Number:	Parts Quantity:
Screw	92138776	2
Push Nut	11610157	2

For vehicles repaired under warranty, use:

Labor Code:	Description	Hours:
1083058*	Rear Fascia to Tail Lamp Guide Bracket Rework (One Side)	0.7 hr
1083068*	Rear Fascia to Tail Lamp Guide Bracket Rework (Both Sides)	0.9 hr

*This is a unique Labor Operation for Bulletin use only. It will not be published in the Labor Time Guide.

Version	1
Modified	

GM bulletins are intended for use by professional technicians, NOT a "do-it-yourselfer". They are written to inform these technicians of conditions that may occur on some vehicles, or to provide information that could assist in the proper service of a vehicle. Properly trained technicians have the equipment, tools, safety instructions, and know-how to do a job properly and safely. If a condition is described, DO NOT assume that the bulletin applies to your vehicle, or that your vehicle will have that condition. See your GM dealer for information on whether your vehicle may benefit from the information.



WE SUPPORT VOLUNTARY TECHNICIAN CERTIFICATION