



Service Bulletin

PRELIMINARY INFORMATION

Subject: Changing to Camper Outside Rearview Mirrors

Models: 2014 Chevrolet Silverado 1500
2015-2016 Chevrolet Silverado 1500/2500
2014 GMC Sierra 1500
2015-2016 GMC Sierra 1500/2500

Attention: Any changes or modifications to the vehicle should be first reviewed with the customer, and then noted on the repair order with customer approval. This is for customer satisfaction; this is not a warranty procedure. GM does not support or warranty modifications to vehicles. Adding camper mirrors to trucks built without them will increase the amount of vibration or shake experienced in the mirror. This PI also applies to any of the above models that may be Export vehicles.

This PI has been revised to add the 2016 Model year and update the Recommendation/Instructions and Part Information. Please discard PI1255D.

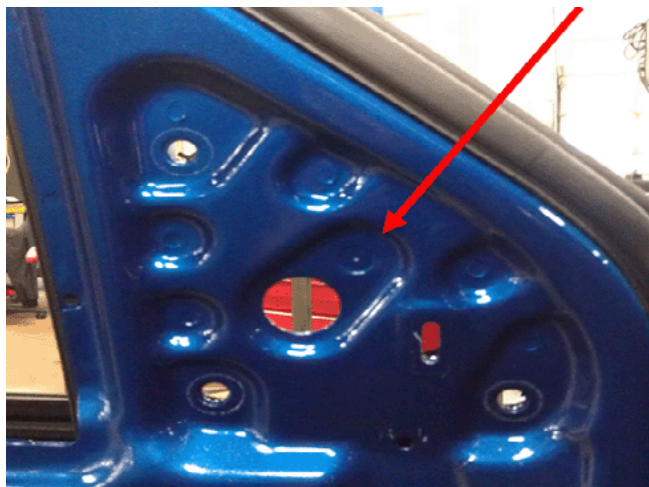
Condition/Concern

Some customers may request to have camper style mirrors installed on their vehicle. The new electrical architecture for the Silverado and Sierra has made swapping mirrors a more involved procedure than with previous models.

The recommendation has been divided into three upgrades, depending on which mirrors the truck was built with (RPO DE2, DL8 or DL3). Please follow the correct RPO group below, because not all camper mirrors can be installed on all trucks. After selecting the correct RPO mirror the truck was built with, this PI will aid in determining which camper mirrors can be installed.

Recommendation/Instructions

1. Trucks built with DE2 mirrors are ONLY upgradable to DF2 camper mirrors.
When installing the DF2 camper mirror, an additional mirror mounting hole may need to be drilled in the door. (Non camper mirrors use 3 mounting holes. Camper mirrors require 4 mounting holes) When drilling the hole in the door, the inner layer of the door sheet metal already has the hole and can be used as a guide to drill through the remaining layers of sheet metal, as shown below in Picture 1.



2. Trucks built with DL8 mirrors or the old style DPN camper mirrors can be upgraded to the new style mirror.
Refer to the GM Accessory Camper Mirror Kit for more information. This kit contains the new style DPN camper mirror.
3. Trucks built with DL3 mirrors are upgradable to DPN camper mirrors, but the power folding and memory functions will be lost (see additional upgrade for DL3 mirrors below).

Note: The new style DPN camper mirror kit will contain the auxiliary cargo lamp for backing up and the amber auxiliary clearance lamp.

Refer to the GM Accessory Camper Mirror Kit for more information. This kit contains the DPN camper mirrors.

Additional Upgrade For DL3 Mirrors: The recommended camper mirror upgrade for trucks equipped with DL3 mirrors is the GM Accessory Kit containing the DPN camper mirrors listed above, but for certain models there may be an additional option. GM offers a full feature camper mirror that includes power folding and memory functions (RPO DQS), but there is NO GM Accessory Camper Mirror Kit for these mirrors. These camper mirrors can be selected as an option when ordering a truck. The following information is for upgrading CERTAIN 2015/2016 models from DL3 mirrors to DQS camper mirrors, see models listed below. This upgrade is ONLY for the models listed below, and is NOT recommended on 2015 models without RPO AVF or 2014 models, due to electrical differences in the fuse protection.

Part Information For DE2 to DF2 Mirror Swap				
Part Number	RPO	Usage	Description	Color
22820395	DF2	ALL	LEFT - O/S BASE MIRROR, WIDE LOAD, FOLDING	Black
22820396	DF2	ALL*	RIGHT - O/S BASE MIRROR, WIDE LOAD, FOLDING	Black

Note: *Note the mirror will have an outside temperature sensor, which is only used on some diesel trucks. If the vehicle does not use a temperature sensor, the wiring can be cut off the mirror and discarded.

- 2015-2016 Chevrolet Silverado 1500
- 2015 Chevrolet Silverado 2500 (with RPO AVF)
- 2016 Chevrolet Silverado 2500
- 2015-2016 GMC Sierra 1500
- 2015 GMC Sierra 2500 (with RPO AVF)
- 2016 GMC Sierra 2500

Trucks built at Flint Assembly, 11th VIN position "F"

Note: DQS Camper Mirrors are **NOT RECOMMENDED** for upgrading **NON-FLINT BUILT TRUCKS**.

With DL3 Mirrors

1. Remove the front side door trim. Refer to Front Side Door Trim Replacement in SI.
2. Remove the outside rearview mirrors.
3. If necessary, drill out the fourth hole (see photo above) and then apply GM Vehicle Care Super Lube with PTFE to the hole. An additional mirror mounting hole may need to be drilled in the door (Non-camper mirrors use 3 mounting holes and camper mirrors require 4 mounting holes). When drilling the hole in the door, the inner layer of the door sheet metal already has the hole and can be used as a guide to drill through the remaining layers

of sheet metal, as shown in photo above.

4. Due to content differences between the DL3 and DQS mirrors, the door harnesses must be replaced. The Parts Department will need to turn the VIN filter OFF and then look up the door harnesses for the truck. The Parts Department must substitute the trucks mirror RPO DL3 with DQS.

Note: Please do not contact Partech for the door wiring harness or mirror lookup, as the truck was not originally built with this configuration. Turn off the Electronic Parts Catalog (EPC) VIN Filter and use all RPOs for your VIN, except for the mirror RPO. Substitute the factory mirror RPO (DL3) with the camper mirror RPO (DQS) being installed. Please refer to the EPC for potential supersessions.

5. Install new door harnesses.
6. Install the new DQS camper mirrors listed below, and make the needed electrical connections.
7. Install the front side door window garnish molding. Refer to Front Side Door Window Garnish Molding Replacement in SI.
8. Install the front side door trim. Refer to Front Side Door Trim Replacement in SI.

Part Information For DQS Mirror Swap				
Part Number	RPO	Usage	Description	Color
22960565	DQS	LEFT	O/S MIRROR, WIDE LOAD, POWER FOLDING, MANUAL EXTENDING, MEM, VERTICAL GLASS, HEATED, TURN SIG IND, CARGO AND CLEARANCE LAMPS	Chrome
22970649	DQS	RIGHT	O/S MIRROR, WIDE LOAD, POWER FOLDING, MANUAL EXTENDING, MEM, VERTICAL GLASS, HEATED, TURN SIG IND, CARGO AND CLEARANCE LAMPS	Chrome

GM bulletins are intended for use by professional technicians, NOT a "do-it-yourselfer". They are written to inform these technicians of conditions that may occur on some vehicles, or to provide information that could assist in the proper service of a vehicle. Properly trained technicians have the equipment, tools, safety instructions, and know-how to do a job properly and safely. If a condition is described, DO NOT assume that the bulletin applies to your vehicle, or that your vehicle will have that condition. See your GM dealer for information on whether your vehicle may benefit from the information.



WE SUPPORT VOLUNTARY TECHNICIAN CERTIFICATION