



Countries: CANADA, UNITED STATES Document ID: IK1500084
 Availability: ISIS Revision: 0
 Major System: FUEL SYSTEMS Created: 9/8/2015
 Current Language: English Last Modified: 9/17/2015
 Other Languages: NONE Author: Charles Schroeder
 Viewed: 163

[Less Info](#)

Hide Details

Coding Information

Copy Link 	Copy Relative Link 	Bookmark View My Bookmarks	Add to Favorites 	Print 	Provide Feedback 	Helpful 3	Not Helpful 0
----------------------	-------------------------------	--	-----------------------------	------------------	-----------------------------	-------------------------	-----------------------------

Title: Applying Snow Valve Advanced Logic

Applies To: WorkStar with Snow Valve and N13 built 06/20/2014 through 04/05/2015

Change Log

Please refer to the change log text box below for recent changes to this article:

09/09/2015 - Initial Article Release

Description

This document will outline the procedure for updating the Body Controller with an Advanced Logic template to allow proper operation of the snow valve.

1. Identify the snow valve feature installed
2. Remove the snow valve feature
3. Apply an Advanced Logic template
4. Program the Body Controller
5. This entire process occurs with the Key Off

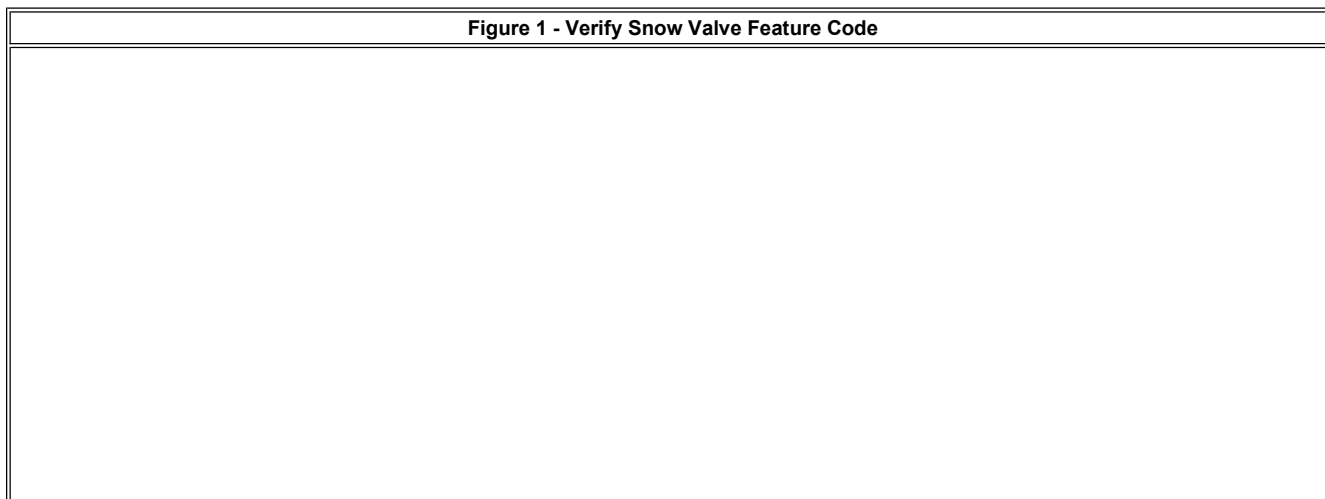
NOTE:

Failure to remove the feature code prior to installing the Advanced Logic template will result in an error on the messages tab. This will prevent programming.

Special Tool(s) / Software

Tool Description	Tool Number	Comments	Instructions
Diamond Logic Builder		EZ-Tech Software	

Repair Step(s)

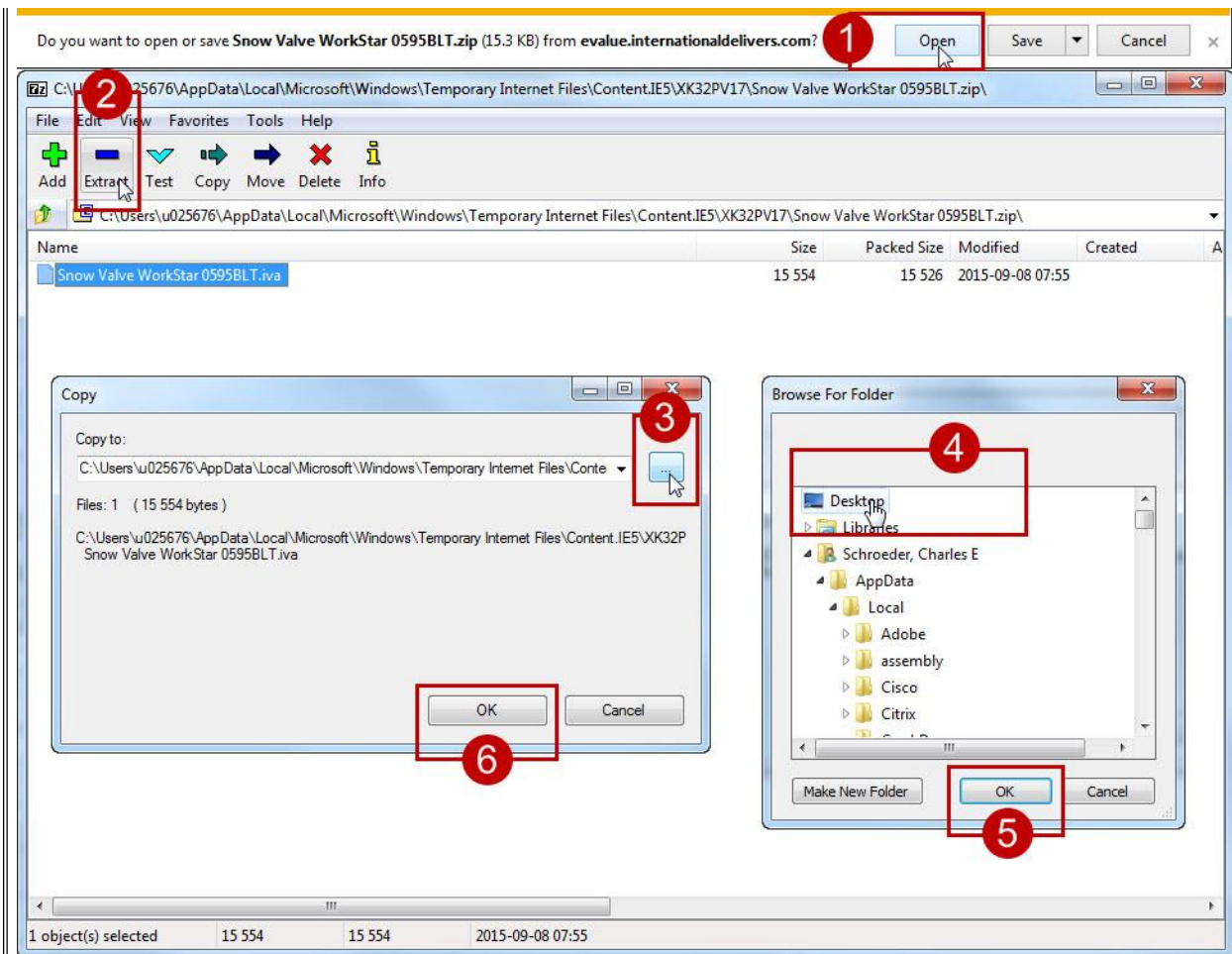


The screenshot shows the 'International Vehicle Information' web application. At the top, there are navigation links: Home, Publications, Service Reference, Write Up, Dealer, Warranty, Support. A search bar contains 'Chassis / VIN Number FN721188'. Below this is a 'Print' button with a dropdown menu 'Select tab(s) to print'. The main navigation bar includes: Summary, Health Report, Managed Repairs, Details, Components (highlighted with a red circle and arrow labeled '2'), Serial Numbers, Service Contracts, Warranty History, iKnow Search, Case History, iApprove, iRequest. The 'Components' section shows 'VIN : 3HTGRSNT1FN721188' and '249 components found.' Below is a table with columns: S.No, Class Description, Parts Catalog Component, Component Line Drawing, and Description. Row 242 is highlighted in yellow and marked with a red circle and arrow labeled '3'. The description for row 242 is 'BC PROG, SNOW VALVE ENGINE INTAKE Engine Air Intake'.

S.No	Class Description	Parts Catalog Component	Component Line Drawing	Description
1	FRAMES	0001CAJ	0001CAJ	FRAME RAIL 120,000 PSI YIELD 456.0" OAL Heat Treated Alloy Steel (120,000 PSI Yield); 10.866" x 3.622" x 0.433" (276.0mm x 92.0mm x 11.1mm); 456.0" (11582mm) Maximum OAL
2	FRAMES	0001LLA	0001LLA	FRT BUMPER-SWEPT BACK (STEEL) Steel, Swept Back
3	FRAMES	0001VZZ	0001VZZ	REINFORCEMENT, FRAME FRONT ; Use when Mounting Equipment at Front of Frame
4	FRAMES	0001WDS	0001WDS	20" INTEGRAL FRONT FRAME EXT Integral; 20" In Front of Grille
5	FRAMES	0001WDU	0001WDU	FRONT CROSSMEMBER W/MTG FLANGE FOR PUMP for Hydraulic Pump, Mounting Flange to Accommodate Pump
6	FRAMES	0001WTX	0001WTX	WHEEL BASE RANGE 199" THRU 264" 199" (505cm) Through and including 264" (670cm)
7	FRAMES	0001570	0001570	TWO FRONT TOW HOOKS Frame Mounted
8	FRAMES	0001572	0001572	TWO REAR TOW HOOKS
9	FRONT AXLES	0002ARY	0002ARY	MERITOR MFS-20-133A 20K FT AXLE WIDE TRK Wide Track, I-Beam Type, 20,000-lb Capacity
238	MISC	0595BJJ	0595BJJ	BC PROG, PARK REGEN SW 2010 CLUSTER Aftertreatment, for 2010 Cluster
239	MISC	0595BJL	0595BJL	BC PROG, TRACT CONTROL IND 2010 CLUSTER Traction Warning Light, for Air Brakes, for 2010 Cluster
240	MISC	0595BJS	0595BJS	BC PROG, PTO IND/ALARM 2010 CLUSTER Indicator and Alarm Connected to Remote Power Module, for 2010 Cluster
241	MISC	0595BKD	0595BKD	BC PROG, BODY CONTROLLER FOR TRUCK 2 for Truck Body Controller #2
242	MISC	0595BLT	0595BLT	BC PROG, SNOW VALVE ENGINE INTAKE Engine Air Intake
243	MISC	0595BMW	0595BMW	BC PROG, UPSHIFT IND LIGHT
244	MISC	0595BRZ	0595BRZ	BC PROG, ENGINE PARAMETERS MaxForce 11 & 13

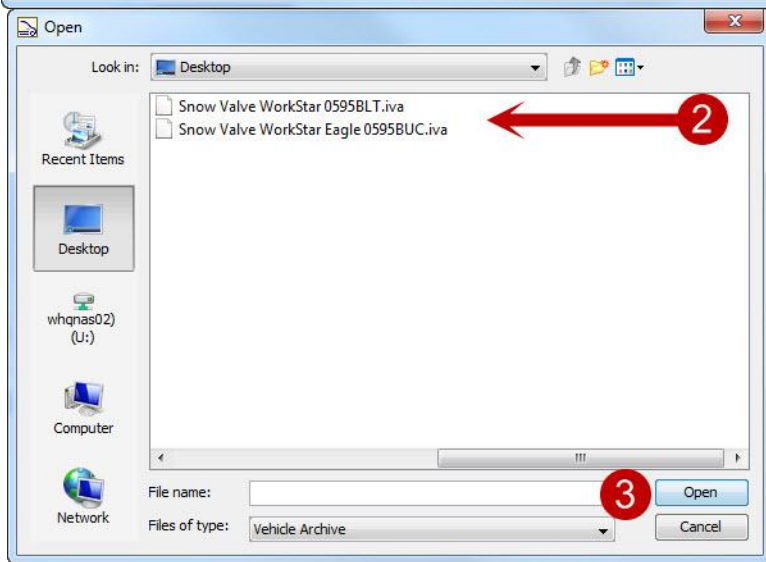
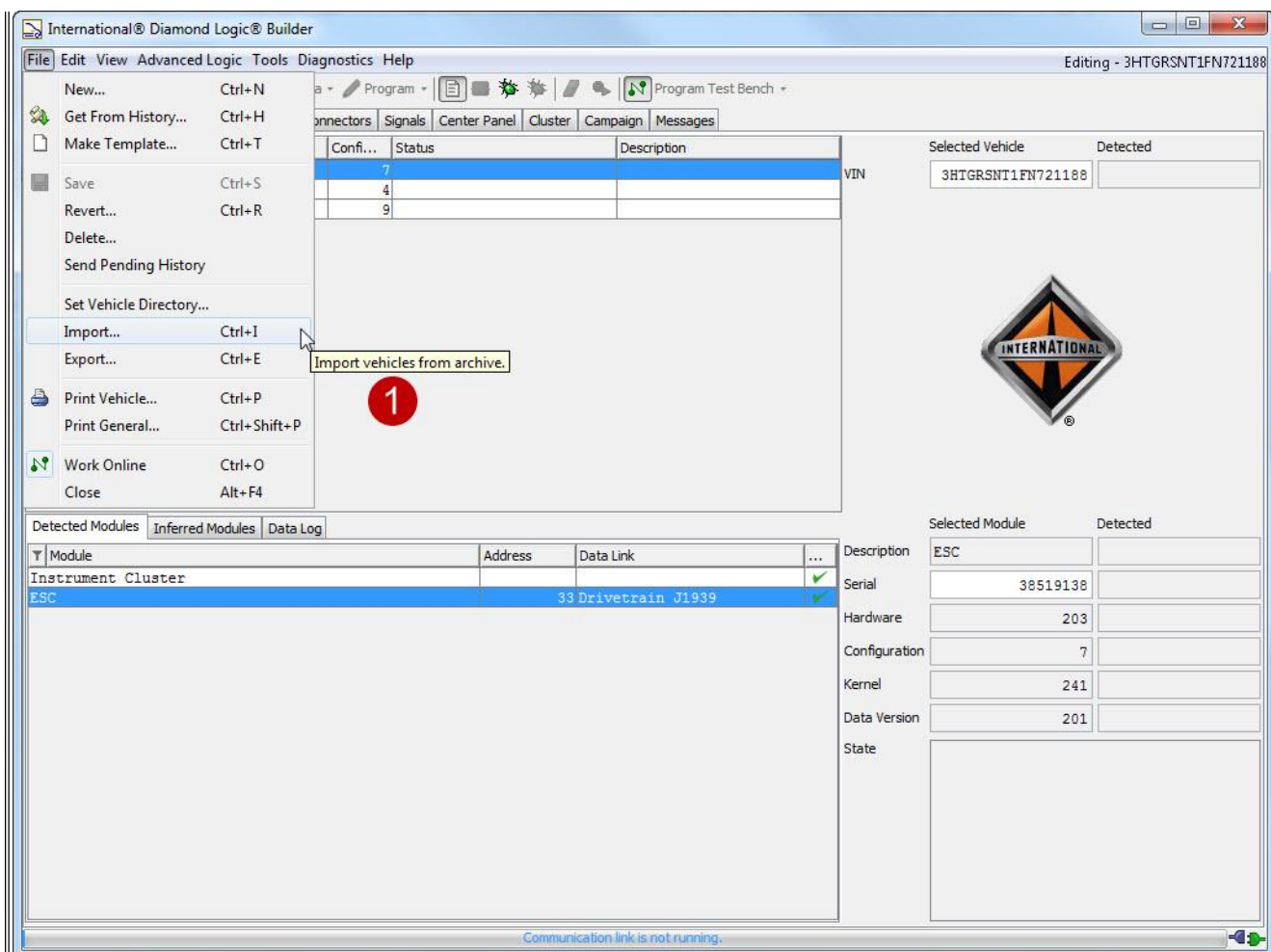
1. Enter the Chassis number in the Service Portal
2. Navigate to the 'Components' tab
3. Identify the Snow Valve feature code the vehicle uses (0595BLT or 0595BUC)

Figure 2 - Saving the Template to the Desktop



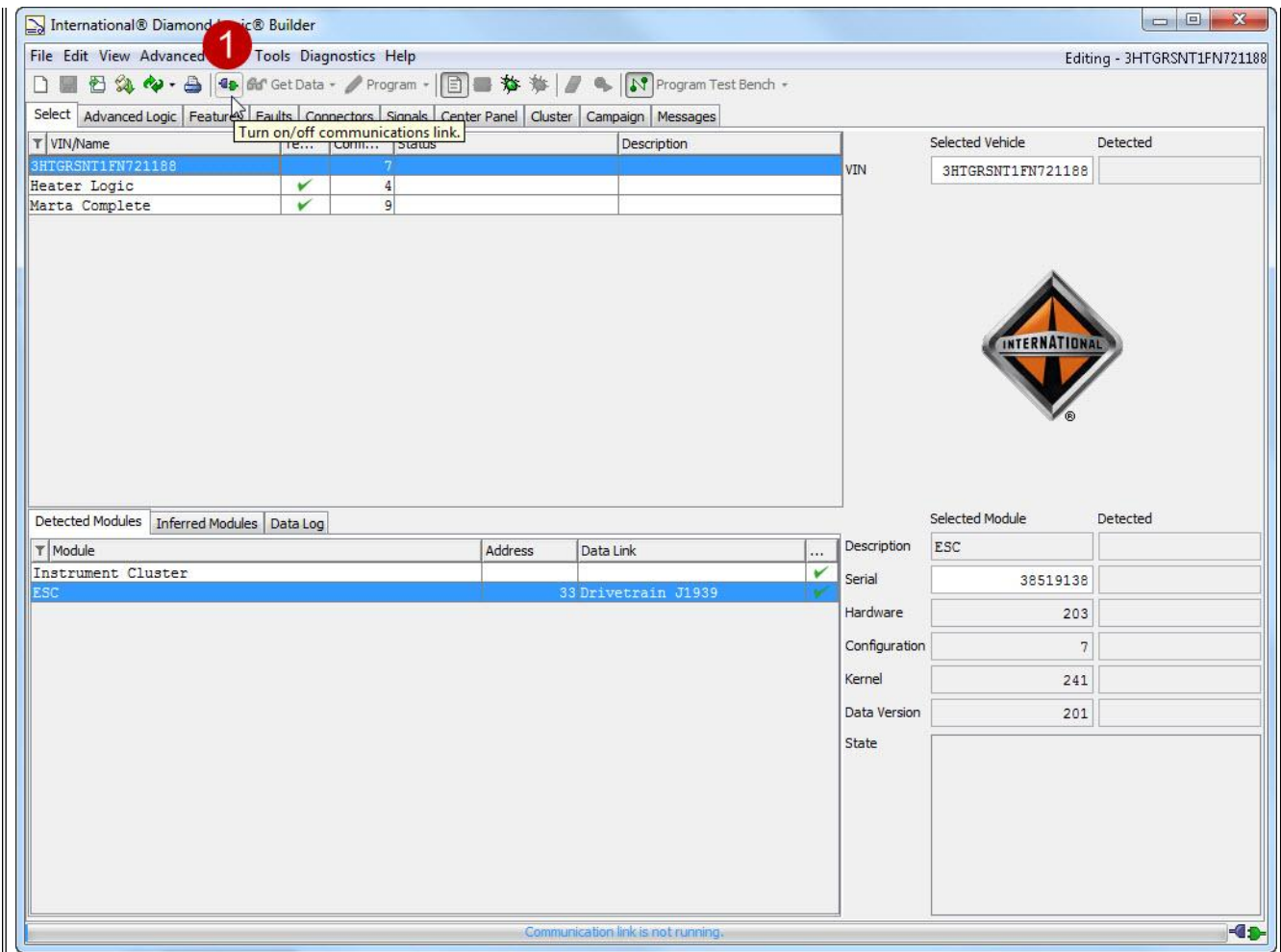
1. Click on the Template required to replace the 0595 code (BLT or BUC), Open the .zip file
2. Extract the file from the zip folder
3. Select the browse button
4. Select Desktop
5. Select OK
6. Select OK
 - [0595BLT - Template](#)
 - [0595BUC - Template](#)

Figure 3 - Import the Template to DLB



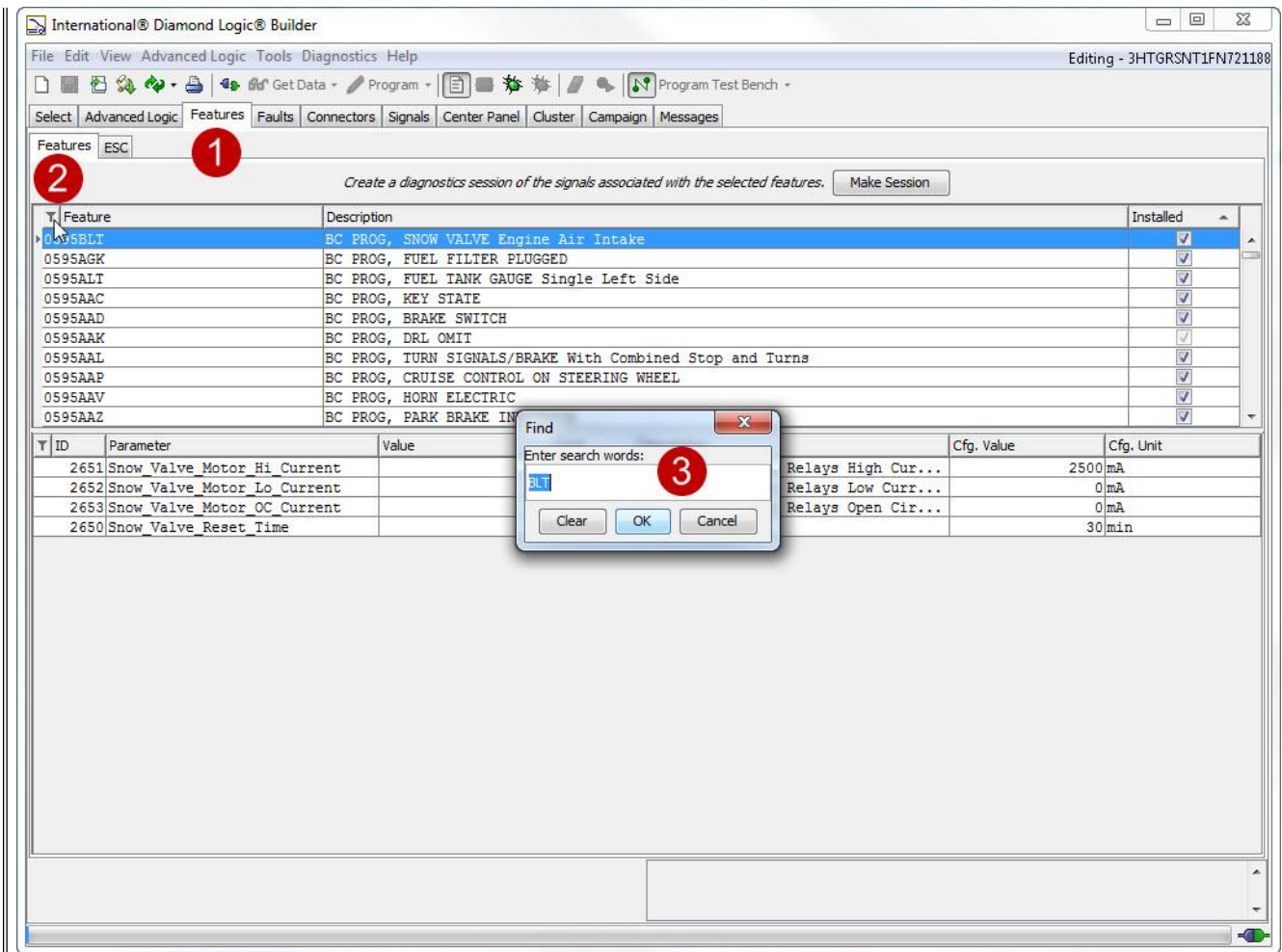
1. Open Diamond Logic Builder - Select File → Import
2. Select the Template for the appropriate feature code
3. Select Open

Figure 4 - Connect to the vehicle with Diamond Logic Builder



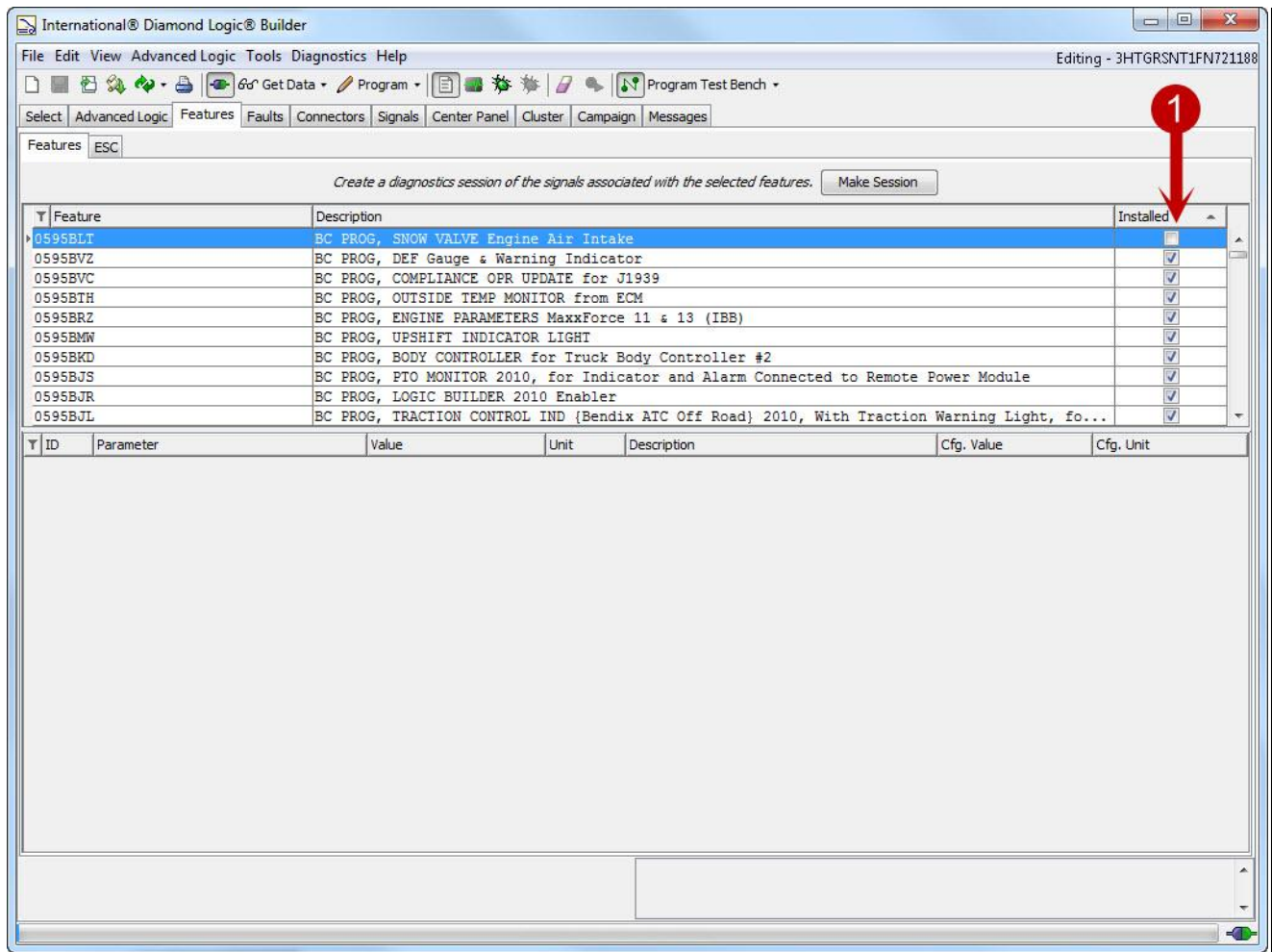
1. Key off → Connect to the vehicle with Diamond Logic Builder

Figure 5 - Locate Snow Valve Feature



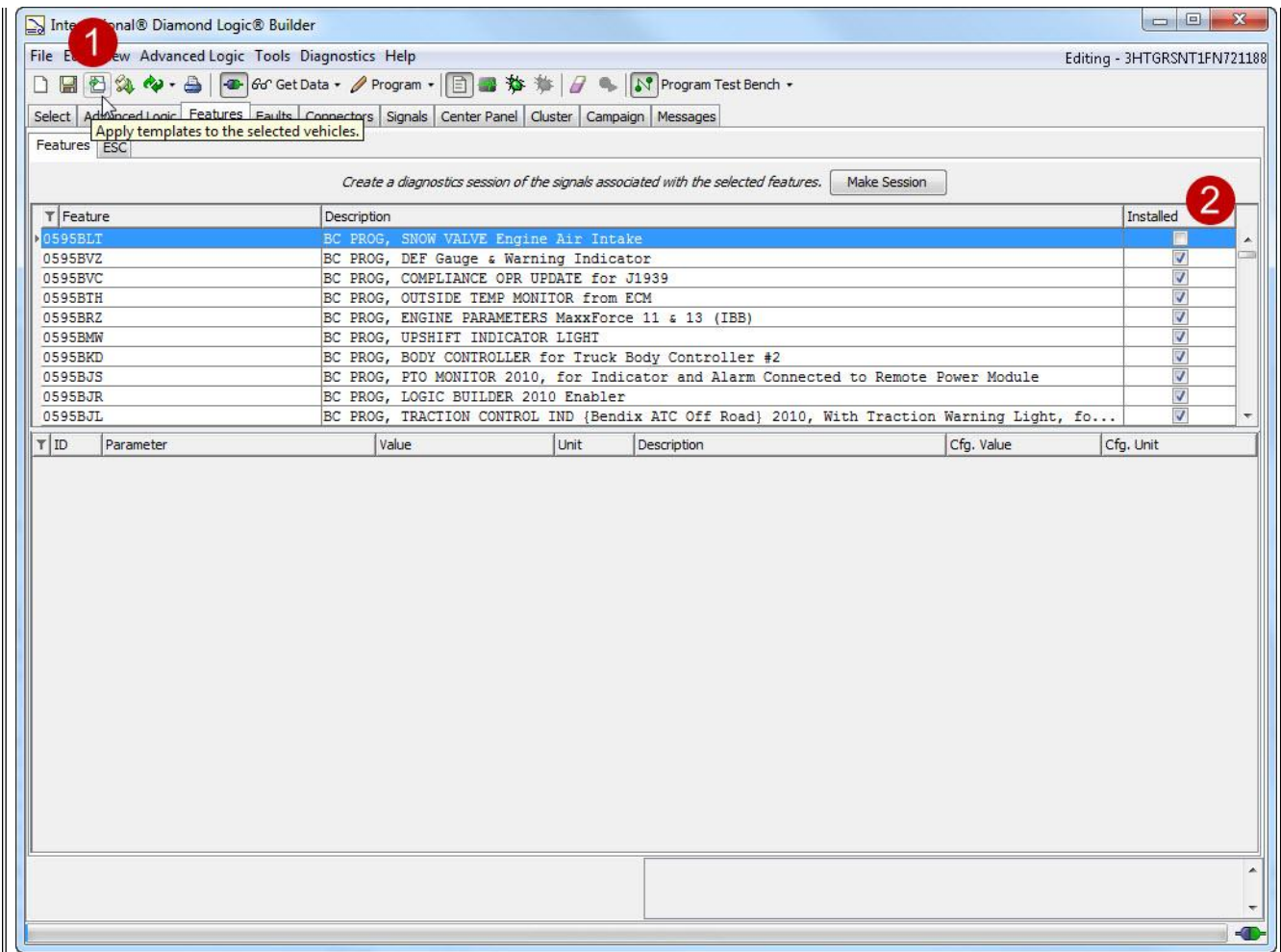
1. Navigate to the 'Features' tab
2. Click on the 'Filter' icon
3. Search for the Snow Valve feature (BLT or BUC), and click OK

Figure 6 - Remove the Snow Valve Feature



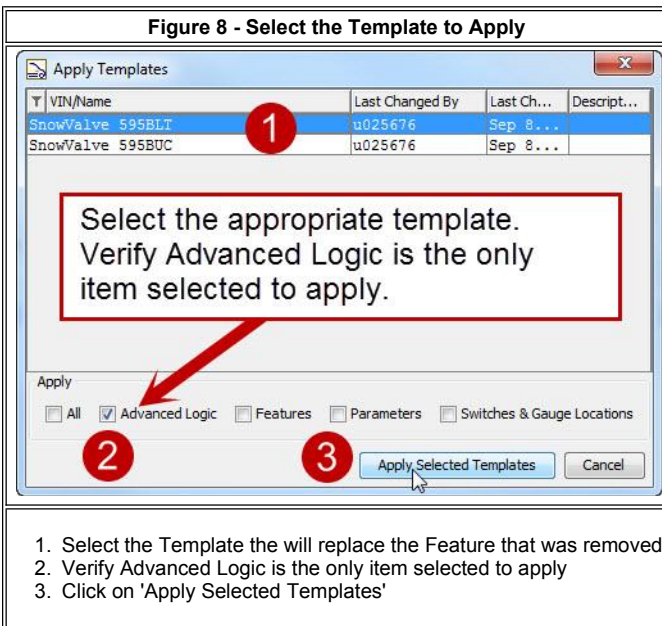
1. Click on the check mark to Uninstall the Snow Valve Feature

Figure 7- Apply the Advanced Logic Template



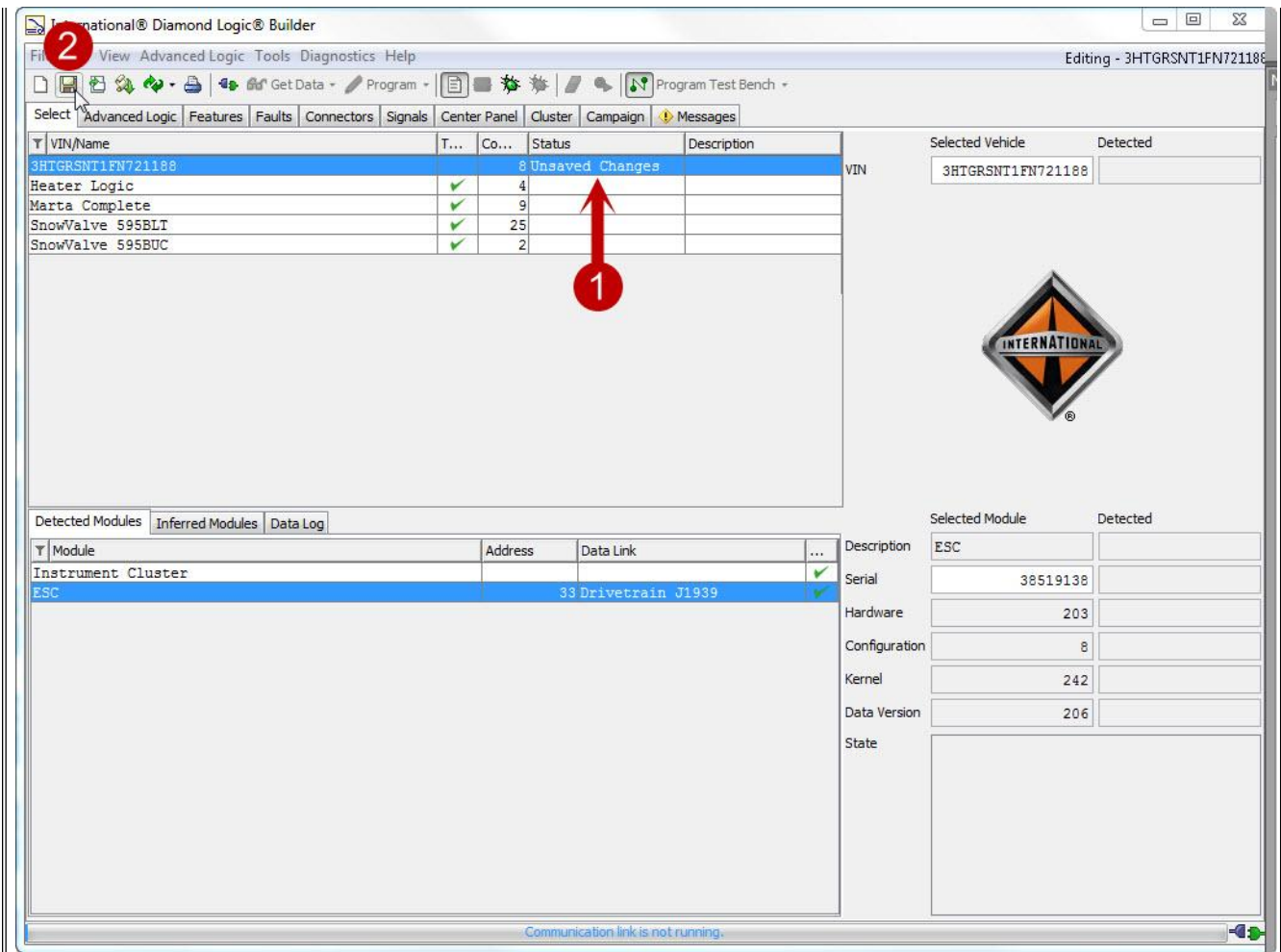
1. Click on the 'Apply Template' icon
2. Note that the Snow Valve feature code is not longer installed

Figure 8 - Select the Template to Apply



1. Select the Template the will replace the Feature that was removed
2. Verify Advanced Logic is the only item selected to apply
3. Click on 'Apply Selected Templates'

Figure 9 - Save the Changes



1. Notice the VIN now shows 'Unsaved Changes'
2. Click on the Save icon to save the Advanced Logic template that was just applied

Figure 10 - Program the Body Controller

International® Diamond Logic® Builder

File Edit View Advanced Logic Tools Diagnostic Help

Editing - 3HTGRSNT1FN721188

Select Advanced Logic Features Faults Connectors Signal...

Write the selected vehicle configuration into all programmable modules.

Y VIN/Name	T...	Co...	Status	Description
3HTGRSNT1FN721188			8 Modified	VIN
Heater Logic			4	
Marta Complete			9	
SnowValve 595BLT			25	
SnowValve 595BUC			2	

Selected Vehicle: 3HTGRSNT1FN721188
Detected: 3HTGRSNT1FN721188

Y Module	Address	Data Link	Description
Instrument Cluster			
ESC		33 Drivetrain J1939	

Selected Module: ESC
Detected: ESC

Serial	38519138	38519138
Hardware	203	203
Configuration	8	7
Kernel	242	241
Data Version	206	201
State		

Click the "Program" button to program the selected configuration

1. Notice after saving the Status changes to Modified
2. Select the 'Program' icon to program the changes to the Body Controller

Hide Details

Feedback Information

Viewed: 162
Helpful: 3
Not Helpful: 0

No Feedback Found