

Technical Service Bulletin



91 Antenna technical problem message (DTC 02617)

91 15 13 2041940/1 September 23, 2015.

Model(s)	Year	VIN Range	Vehicle-Specific Equipment
A4, A5	2016	All	Not Applicable

Condition

- The following message is displayed in the driver information panel when in the SiriusXM band:
 - “ANTENNA - A technical problem has occurred. Please contact your Audi dealer.” (Figure 1).
- Audio from the satellite radio is present.
- DTC 02617** (Satellite antenna) is stored in the radio (address word 56) with fault code 11 (Open circuit).

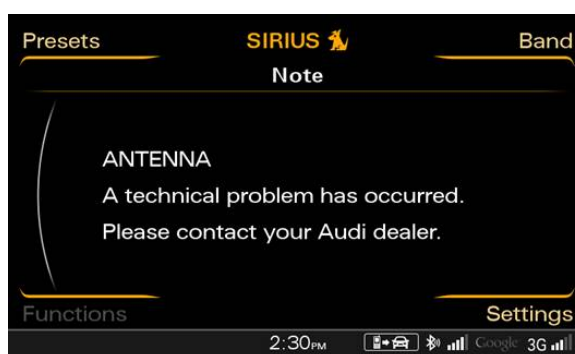


Figure 1. ANTENNA message.

Technical Background

Visually, the MMI and MIB antennas are the same, but each antenna draws a different amount of current. For this reason, if an MIB antenna has been installed on a vehicle with an MMI radio, it causes an open circuit DTC. The open circuit DTC will be set on an MMI radio if the current draw from the antenna falls below 60mA .

- A MIB antenna draws 55mA (+/- 10mA) 4G0-035-503-K
- A MMI antenna draws 110mA (+/- 10mA) 4G0-035-503-J

Production Solution

Not applicable.

Service

1. Check the current consumption of the shark fin antenna through ODIS GFF.
2. In ODIS GFF, access the measured value blocks of the radio (address word 56) (Figure 2).

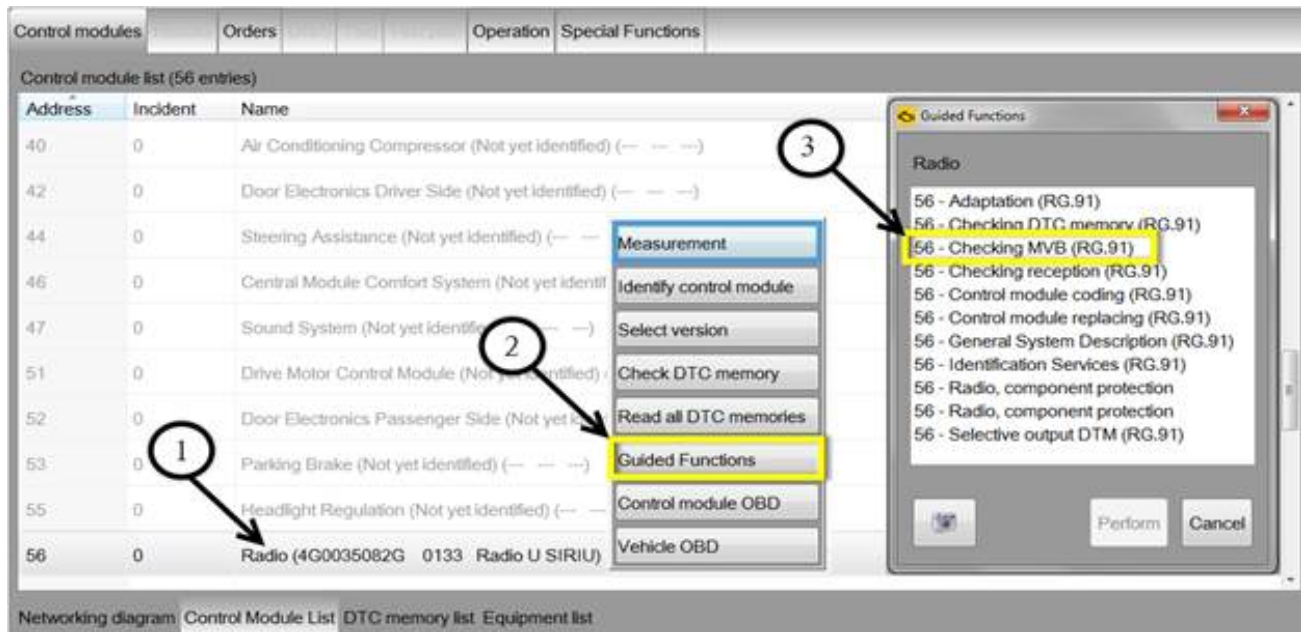


Figure 2. Access radio measured value blocks by right-clicking the radio module (1), then selecting Guided Functions (2), then selecting Checking MVB (RG.91) and clicking Perform. (Shown for MMI 3G+.)

3. Select measuring value **-3- Integrated digital tuner (if available)** (Figure 3).

Which measuring value should be displayed?

- 1 - Radio general
- 2 - Antennas
- 3 - Integrated digital tuner (if available)
- 4 - Inputs
- 5 - Cancel

Figure 3. Select measuring value **-3- Integrated digital tuner (if available)**

4. Check the current consumption of the satellite radio antenna (MVB 20.3 for MMI 3G+; MVB 9.3 for CAN radio) (Figure 4):
 - If the current consumption shown on an MMI system is between 40mA – 100mA, proceed to step 5.
 - If the current consumption of the antenna is above 100mA, this TSB does not apply. Continue to diagnose the concern outside of this TSB.

Read measured values

Address	ID	Measured value	Value	Unit	Target value
56	17.1	Signal quality (SDARS)	4		
56	17.2	Audio signal available	Yes		
56	18.1	Subscription status of audio service	1		1
56	19.1	Subscription status of data service	1		1
56	19.3	Subscription for following data service	00000000 00000001		1
56	20.1	Vendor information	1		
56	20.2	Status of satellite aerial	0		0
56	20.3	Aerial current of satellite aerial	105.000000	mA	
56	21.1	Serial number (ESN) of integrated SDARS tuner (Sirius)	064503404412		

Stop update Description Add to test plan Ok

Figure 4. Check the current consumption of the satellite radio antenna. (Shown for MMI 3G+.)

- Remove the satellite radio antenna and inspect the part number. If an MIB antenna (with a K suffix part number) is installed on an MMI system, replace the antenna with an MMI antenna (with a J suffix part number) (Figure 5).



Figure 5. MIB antenna with K suffix part number 4G0-035-503-K (A), and MMI antenna with J suffix part number 4G0-035-503-J (B).

Technical Service Bulletin



Warranty

Claim Type:	Use applicable claim type. If vehicle is outside any warranty, this Technical Service Bulletin is informational only.		
Service Number:	9138		
Damage Code:	0012		
Labor Operations:	For A4: GPS antenna remove+reinstall	9113 1900	160 TU
	For allroad: GPS antenna remove+reinstall	9113 1910	190 TU
	For A5: GPS antenna remove+reinstall	9113 1900	440 TU
	For all: GPS antenna paint new part	9113 6100	50 TU
Diagnostic Time:	GFF	0150 0000	Time stated on diagnostic protocol (Max 100 TU)
	Road test prior to service procedure	No allowance	0 TU
	Road test after service procedure	0121 0004	10 TU
	Technical diagnosis at dealer's discretion (Refer to Section 2.2.1.2 and Audi Warranty Online for DADP allowance details)		
Claim Comment:	As per TSB #2041940/1		

All warranty claims submitted for payment must be in accordance with the *Audi Warranty Policies and Procedures Manual*. Claims are subject to review or audit by Audi Warranty.

Required Parts and Tools

Part Number	Part Description	Quantity
4G0035503J	MMI antenna	1

Additional Information

All parts and service references provided in this TSB (2041940) are subject to change and/or removal. Always check with your Parts Department and service manuals for the latest information.