

# Technical Service Bulletin



## 57 Customer autolock setting "Lock when driving" not available in MMI menu

57 15 17 2035173/4 December 2, 2015. Supersedes Technical Service Bulletin Group 57 number 13-98 dated December 9, 2013 for reasons listed below.

Model(s)	Year	VIN Range	Vehicle-Specific Equipment
A4	2013 - 2016	All	Not Applicable
A6	2013 - 2018	All	Not Applicable
Q5	2013 - 2017	All	Not Applicable

## Condition

REVISION HISTORY		
Revision	Date	Purpose
4	-	Revised header data (Added model years)
3	12/09/2013	Revised <i>Service</i> (Added SVM procedure for non-hybrid Q5)
2	10/16/2013	Revised <i>Service</i> (Added instructions for changing settings)

Customer may report that the automatic door lock function cannot be deactivated.

## Technical Background

The "Lock when driving" (Autolock) configuration setting has been discontinued starting in some model year 2013 vehicles, and it is no longer available in the *Car >> Vehicle Settings* category in the MMI (Figure 1).

The vehicle can still be unlocked while it is being driven, at any time, with the central locking switch in the door.

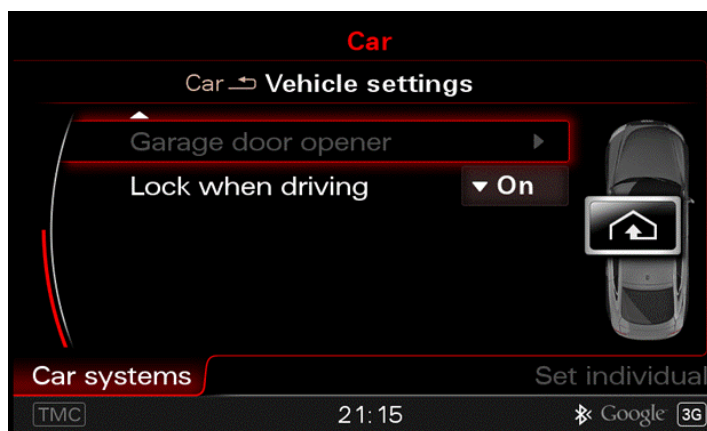


Figure 1. Autolock configuration prior to model year 2013.

## Production Solution

There is no production solution. However, the convenience system central control module, J393 (address word 46), can be coded differently to both enable the system configuration option and to set the default to ON or OFF. Or, for non-hybrid Q5 vehicles, the convenience system central control module can be updated with an SVM code.

**!** **Note:** Any coding changes made will be reset to factory specifications if a software update is performed, an SVM Specified-Actual comparison is performed, or if the convenience system central control module is replaced.

## Service

### For non-hybrid Q5 vehicles only:

1. Perform SVM to enable the Autolock menu option in the MMI. Follow all instructions in the attached TSB, 2011732: *00 Software Version Management (SVM), operating instructions*.
2. Update the J393 control module (address word 46), using the SVM action code: **46A012**.

### For all other vehicles:

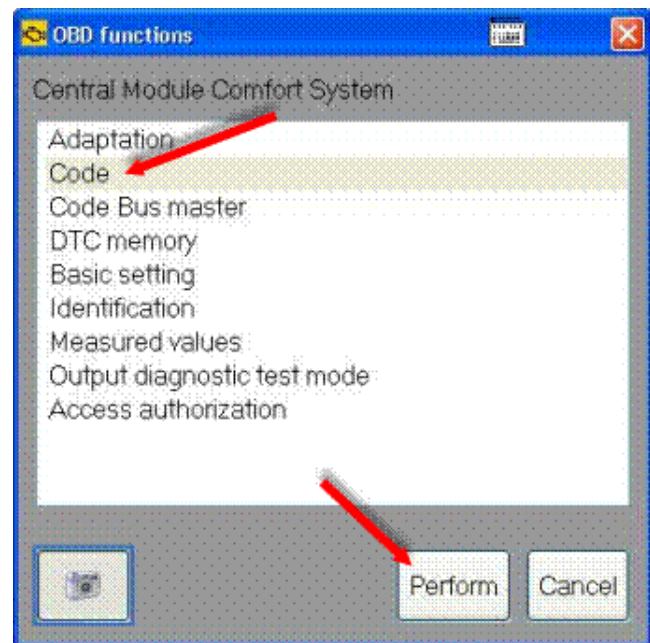
If the customer would like to have the Autolock configuration setting enabled or changed, the coding of the J393 control module needs to be changed. The following Autolock configuration options are available:

- Autolock feature hidden in MMI
- Autolock feature shown in MMI
- Autolock default ON
- Autolock default OFF

Refer to the following table to determine what to change before proceeding with the coding instructions below:

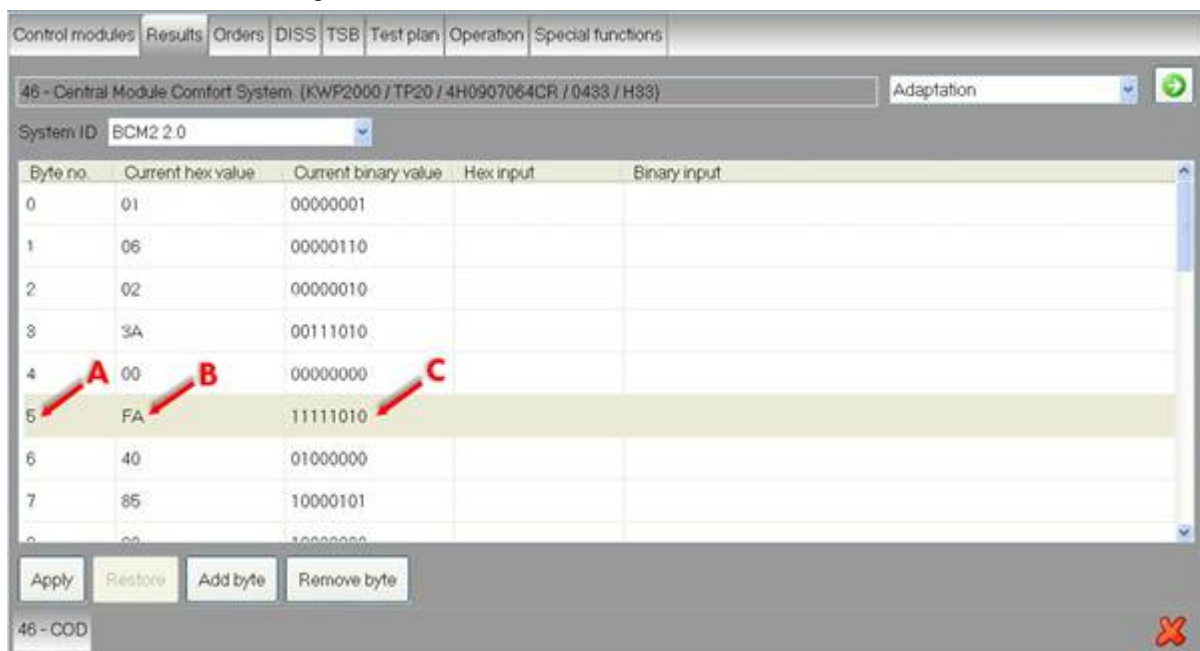
Option Desired	Byte and bit to modify	Modification needed
Autolock feature hidden in MMI	Byte 13, bit 2	= 1
Autolock feature shown in MMI	Byte 13, bit 2	= 0
Autolock default ON	Byte 5, bit 4	= 1
Autolock default OFF	Byte 5, bit 4	= 0

1. In ODIS, in the **Control Module list**, right-click on address 46 and select **Control Module OBD** to open the **OBd functions** pop-up window. Select **Code >> Perform** (Figure 2).



**Figure 2.** The OBD functions pop-up window.

2. The bytes will be shown in rows with their current hex and binary value (Figure 3). As mentioned above, Byte 5 is used to change whether or not the Autolock feature is shown in the MMI, and Byte 13 is used to change the Autolock default setting from ON or OFF.



**Figure 3.** This example shows typical values for a C7 S6. The **Byte no.** is 5 (Arrow A), the **Current hex value** is FA (Arrow B), and the **Current binary value** is 11111010 (Arrow C).

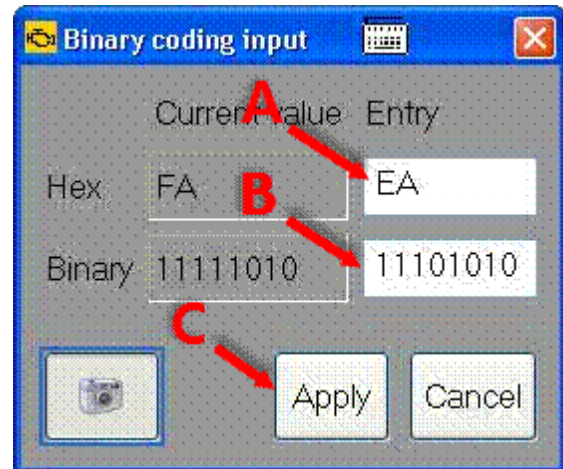


**Tip:** For reference, write down original coding before making changes.

- Click on the row that contains the byte number to be changed to open the **Binary coding input** pop-up window (Figure 4).

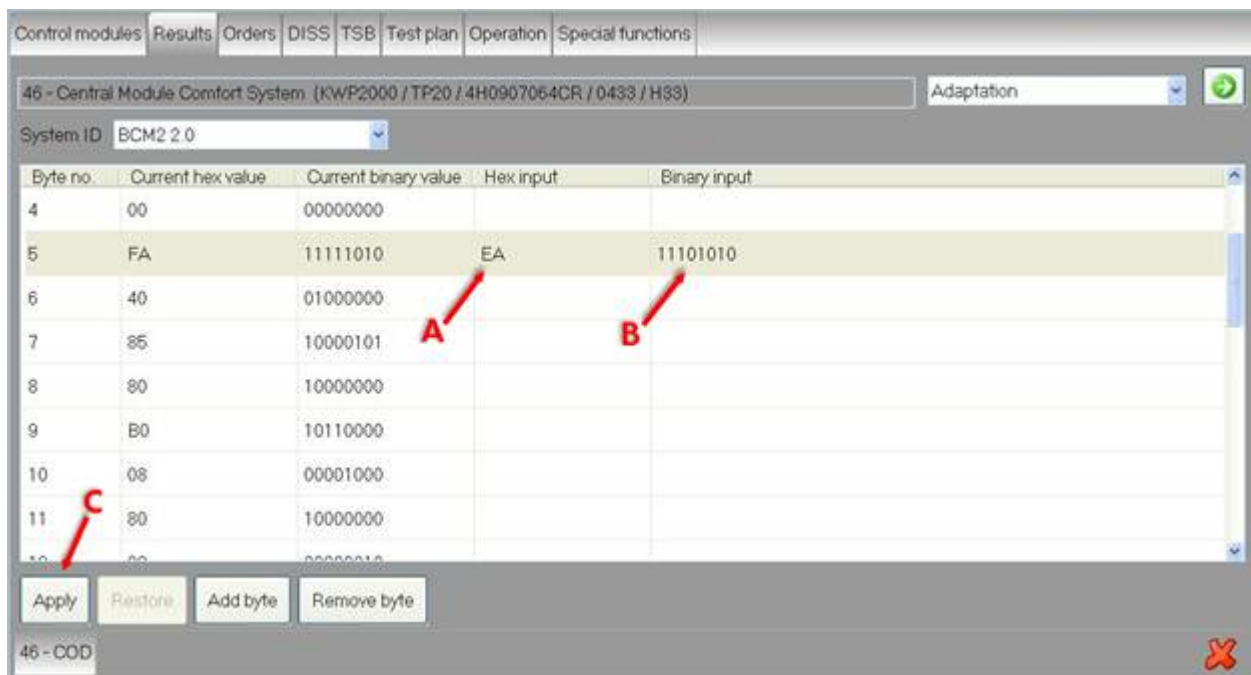
Change the Hex or Binary value as desired, then click **Apply**.

**Note:** Bits are counted from right to left, starting with 0. There are 8 bits in a byte, 0 - 7.



**Figure 4.** The Binary coding input pop-up window. In this example, Bit 4 in the Binary value (Arrow B) is changed from 1 to 0, so FA becomes EA (Arrow A). Click **Apply** (Arrow C) after making changes.

- Confirm that the desired values are now displayed in the **Hex input** and **Binary input** columns, then click **Apply** (Figure 5).



**Figure 5.** The new hex value input, EA (Arrow A), is shown in the **Hex input** column, and the new bit value input, 11101010 (Arrow B), is shown in the **Binary input** column. Click **Apply** (Arrow C) to update.

5. A pop-up window will ask “Do you really want to perform the coding?” Select **YES**.
6. After the code is written, a window appears to confirm that the coding process was completed successfully (Figure 6). Click **OK** to close the window.

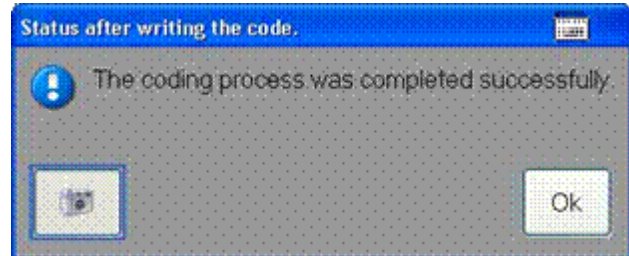


Figure 6. Successful coding confirmation window.

7. A window requesting an ignition reset appears (Figure 7). Perform an ignition reset and Click **OK**.

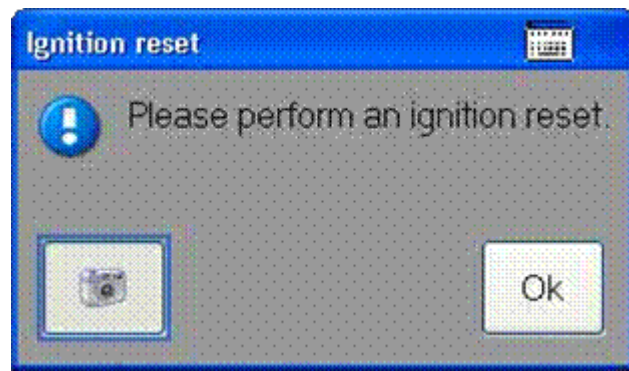
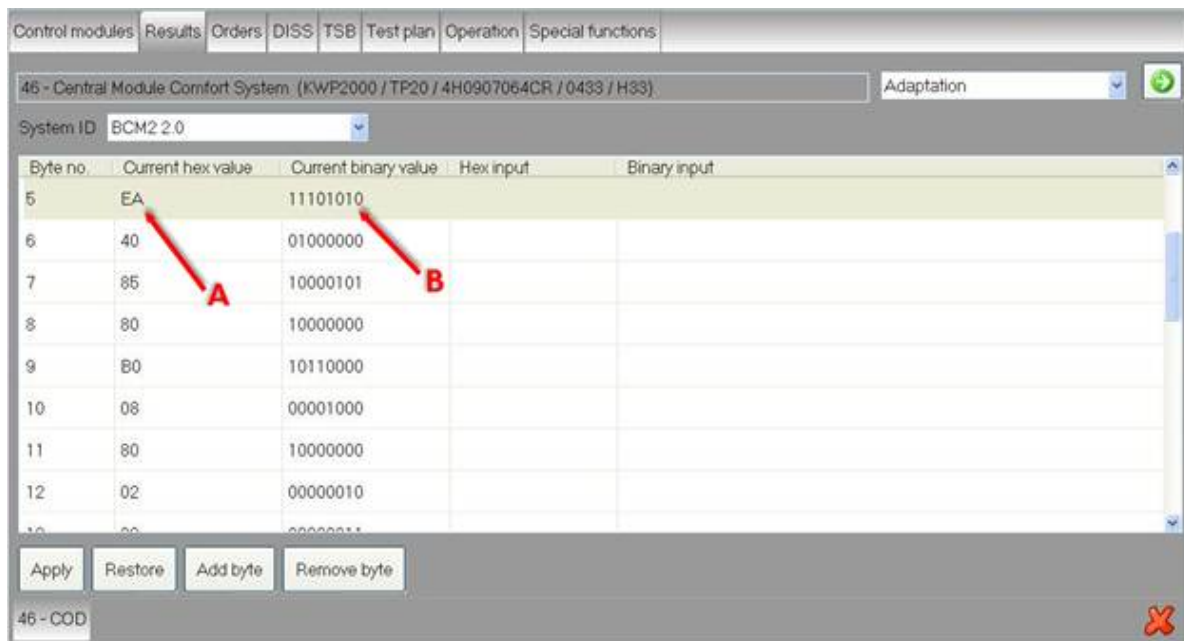


Figure 7. Ignition reset window.

8. The **Current hex value** and the **Current binary value** columns will be updated with the new values (Figure 8).



Byte no.	Current hex value	Current binary value	Hex input	Binary input
5	EA	11101010		
6	40	01000000		
7	85	10000101		
8	80	10000000		
9	80	10110000		
10	08	00001000		
11	80	10000000		
12	02	00000010		
13	00	00000000		

Figure 8. The **Current hex value** has been changed to **EA** (Arrow A), and the **Current binary value** has been change to **11101010** (Arrow B).

9. Check the MMI display in the vehicle to confirm that the customer's desired configuration is now available.
10. Explain the technical background of the locking configuration setting to the customer. The setting is not permanent if a software update or module network check is done in the future, as the setting may revert back to factory specifications. Explain to the customer that if the setting does revert to factory specifications, it will need to be changed again.

## Warranty

This TSB is informational only and not applicable to any Audi warranty.

## Additional Information

All parts and service references provided in this TSB (2035173) are subject to change and/or removal. Always check with your Parts Department and service manuals for the latest information.